

Installation Instructions for IB14EBB5

by APS Auto Parts Specialist Inc.

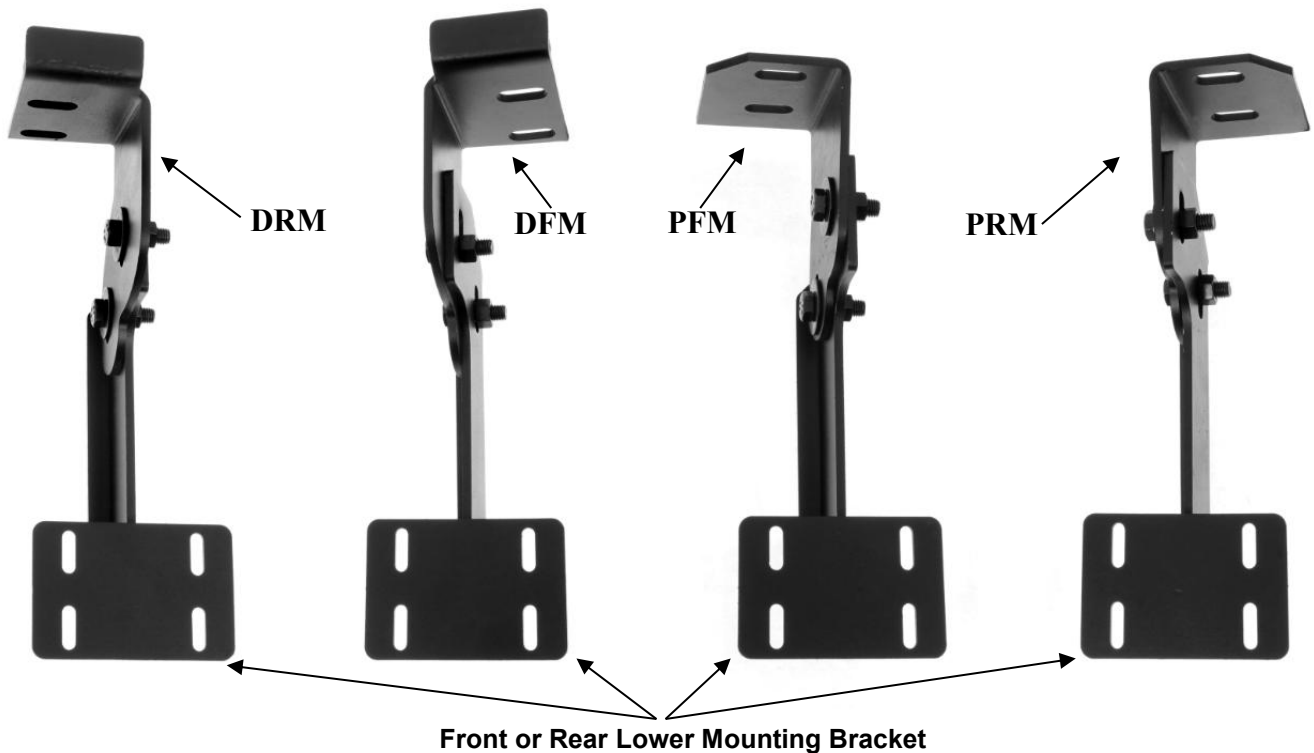
Application: For 1999-2004 Nissan Frontier Crew Cab (5ft. Short Bed Only)
Estimated Time: 1 to 2 hours



Disclaimer: Instructions intended for persons aged 18+ please do not attempt without adult supervision. Instructions are not intended to replace professional installation. Damage from improper installation, misuse or modification to the product voids the manufacturer's warranty.

PARTS LIST:

Item	QTY	Description	Item	QTY	Description
#01	2	Running Board(use for left or right)	#09	16	12mm ID x 32mm OD x 3mm Flat Washers
#02	1	Driver/Left Front Frame Bracket(DFM)	#10	8	M12 Lock Washers
#03	1	Passenger/Right Front Frame Bracket(PFM)	#11	8	M10X1.25 - 30mm Hex Head Bolts
#04	1	Driver/Left Rear Frame Bracket(DRM)	#12	8	M10 Lock Washers
#05	1	Passenger/Right Rear Frame Bracket(PRM)	#13	8	10mm ID x 30mm OD x2.5mm Flat Washers
#06	4	Front or Rear Lower Mounting Bracket	#14	16	M6X1.0 - 20mm T-Bolts
#07	8	M12X1.75 - 35mm Hex Head Bolts	#15	16	6mm x 22mm OD x 2mm Flat Washers
#08	8	M12 Hex Nuts	#16	16	M6 Nylon Lock Nuts



PROCEDURE:

REMOVE CONTENTS FROM BOX. VERIFY ALL PARTS ARE PRESENT. READ FACTORY BODY BOLT REMOVAL INSTRUCTIONS AND INSTALLATION INSTRUCTIONS CAREFULLY BEFORE STARTING INSTALLATION.

1. There are two threaded holes and a slotted hole on the frame towards the front of the vehicle. Use the two threaded holes to partially install the driver front Frame Bracket to frame using the included (2) M10 x 30mm Hex Head Bolts, (2) M10 Lock Washers, and (2) M10 Flat Washers (**Figure 1 & 2**). **NOTE:** If vehicle is equipped with factory sidebars, you may use the factory bolts.
2. Select the Front or Rear Lower Mounting, attach to Frame Bracket with (2) M12 x 35mm Hex Head Bolts, (2) M12 Hex Nuts, and (4) M12 Flat Washers (2) M12 Lock Washers. (**Figure 3**).
3. There are two threaded holes and three non-threaded holes on the frame towards the rear of the vehicle. Use the two threaded holes to partially install the driver rear Frame Bracket to frame using the included (2) M10 x 30mm Hex Head Bolts, (2) M10 Lock Washers, and (2) M10 Flat Washers (**Figure 4 & 5**). **NOTE:** If vehicle is equipped with factory Running Board, you may use the factory bolts.
4. Select the Front or Rear Lower Mounting, attach to Frame Bracket with (2) M12 x 35mm Hex Head Bolts, (2) M12 Hex Nuts, and (4) M12 Flat Washers (2) M12 Lock Washers. (**Figure 6**).

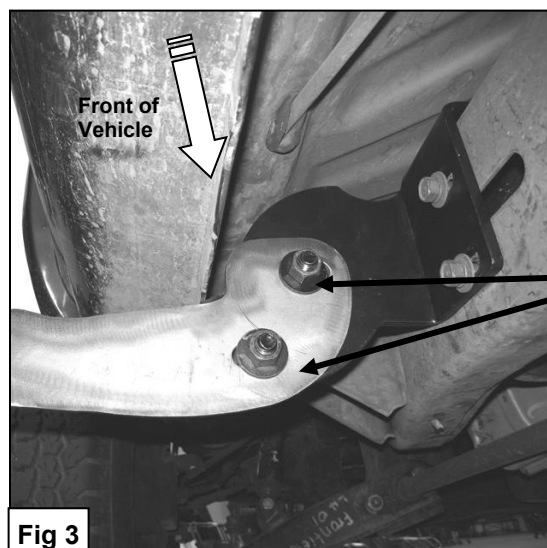
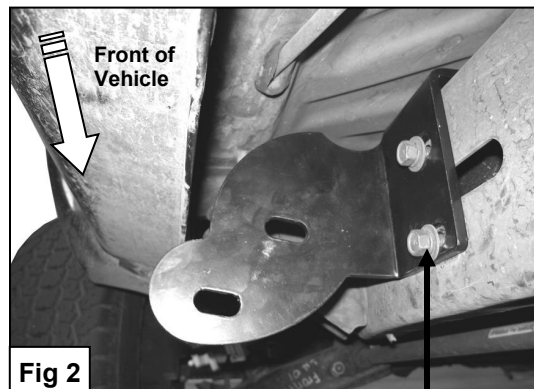
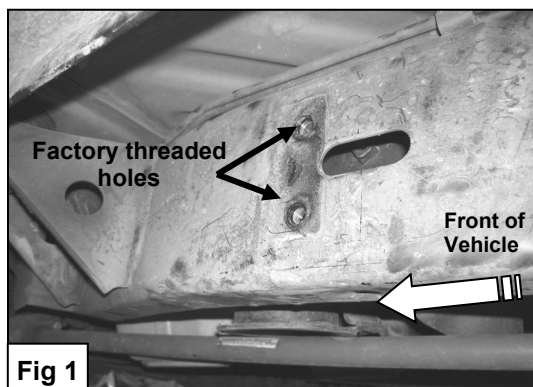
5. Select the Running Board. Slip (8) M6 T-Bolts into each bottom channel (**Figure 7**). Carefully position the Running Board onto the Mounting Brackets. Attach the Running Board to the Mounting Brackets with (4) M6 T-bolts, (4) M6 flat washers and (4) M6 nylon lock nuts, (**Figure 8**). Do not tighten hardware at this time.
6. Level and adjust the Running Board and fully tighten all hardware.
7. Repeat **Steps 1—6** for driver side Running Board installation.
8. Do periodic inspections to the installation to make sure that all hardware is secure and tight.

To protect your investment, wax this product after installing. Regular waxing is recommended to add a protective layer over the finish. Do not use any type of polish or wax that may contain abrasives that could damage the finish.

For Polished Finishes: Aluminum polish may be used to polish small scratches and scuffs on the finish. Mild soap may be used also to clean the Running Board.

For Black Finishes: Mild soap may be used to clean the Running Board.

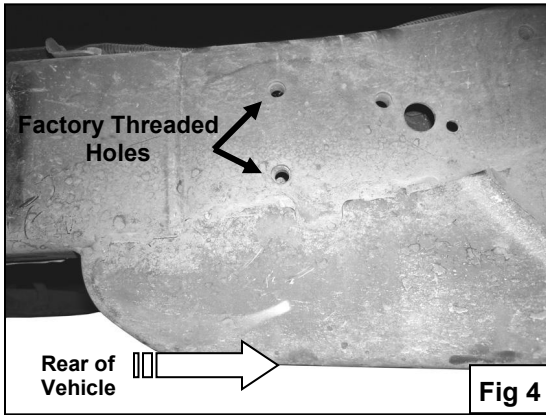
(Driver Front Mounting Brackets Shown)



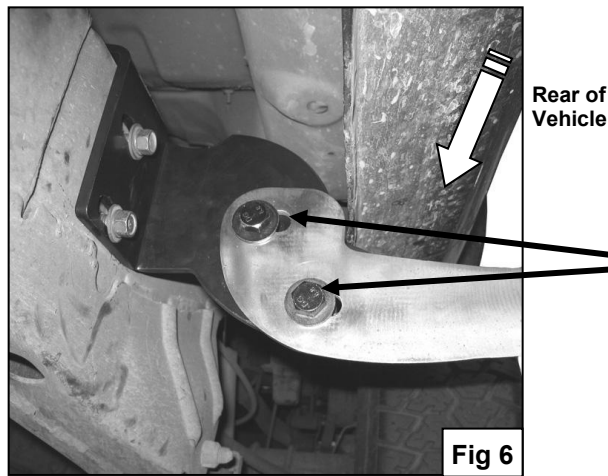
M10 x 30mm Hex Bolts
M10 Lock Washers
M10 Flat Washers
Or
Factory Bolts

M12 x 35mm Hex Bolts
M12 Lock Washers
M12 Flat Washers
M12 Hex Nuts

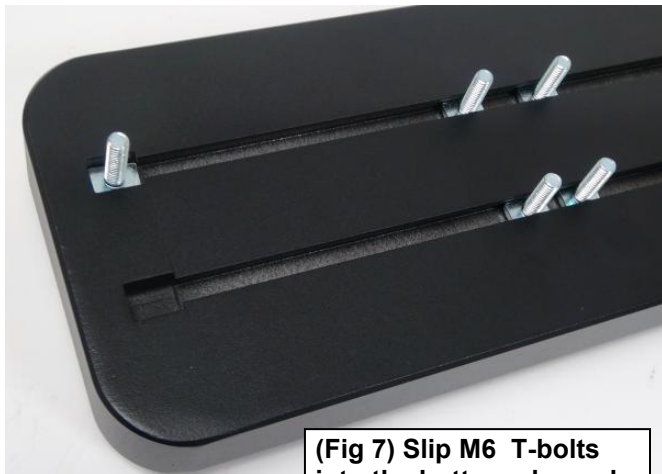
(Driver Rear Mounting Brackets Shown)



M10 x 30mm Hex Bolts
M10 Lock Washers
M10 Flat Washers
Or
Factory Bolts



M12 x 35mm Hex Bolts
M12 Lock Washers
M12 Flat Washers
M12 Hex Nuts



(4)M6 T-bolts
(4)M6 Flat Washers
(4)M6 Nylon Lock nuts

