



IB(5",4)) RUNNING BOARD  
99-04 NISSAN FRONTIER CREW CAB SHORT BED (5 ft.)

**PARTS LIST:**

Item	QTY	Description	Item	QTY	Description
#01	1	Driver/Left Sidebar	#09	8	M12 Nylon Lock Nuts
#02	1	Passenger/Right Sidebar	#10	16	M12 Large Flat Washer
#03	4	Passenger & Driver bar Mounting Bracket (DFM/PFM/DRM/PRM)	#11	8	M10-1.5x30 Hex Bolt
#04	1	Passenger/Right Front Frame Mounting Bracket (PFS)	#12	8	M10 Lock Washer
#05	1	Passenger/Right Rear Frame Mounting Bracket (/PRS)	#13	8	M10 Large Flat Washer
#06	1	Driver/Left Front Frame Mounting Bracket (DFS)	#14	16	M6 Square Hex Bolt
#07	1	Driver/Left Rear Frame Mounting Bracket (DRS)	#15	16	M6 Nylon Lock Nuts
#08	8	M12-1.75x35 Hex Bolt	#16	16	M6 Flat Washers



**INSTALLATION INSTRUCTION:**

**REMOVE CONTENTS FROM BOX. VERIFY ALL PARTS ARE PRESENT. READ INSTRUCTIONS CAREFULLY BEFORE STARTING INSTALLATION. ASSISTANCE IS RECOMMENDED.**

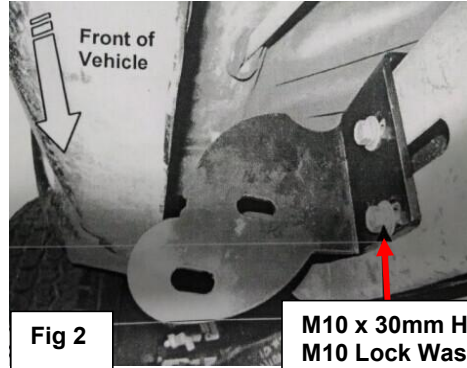
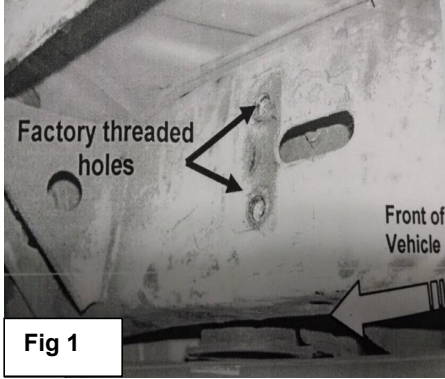
1. There are two threaded holes and a slotted hole on the frame towards the front of the vehicle. Use the two threaded holes to partially install the driver front Frame Bracket to frame using the included (2) M10x 30mm Hex Head Bolts, (2) M10 Lock Washers, and (2) M10 Flat Washer (Figure 1 & 2). **NOTE:** If vehicle is equipped with factory sidebars, you may use the factory bolts.
2. Attach the driver front Sidebar Bracket to the side facing the rear of the vehicle of The already installed Frame Bracket. Use the included (2) 12mm x 35 mm Hex Head Bolts, (2) 12mm Nylock Nuts, and (4) 12mm Flat Washers (Figure 3) . **NOTE:** the cradle on the Sidebar Bracket should be facing the rear of the vehicle. Do not tighten at this time.
3. There are two threaded holes and three non-threaded holes on the frame towards the rear of The vehicle. Use the two threaded holes to partially install the driver rear Frame Brackets to frame using the included (2) 10mm x 30mm Head Bolts, (2) 10mm Lock Washers, and (2) 10mm Flat Washers (Figure 4 & 5). **NOTE:** If vehicle is equipped with factory sidebars, you may Use the factory bolts.
4. Attach the driver rear Sidebar Bracket to the side facing the front of the vehicle of the already installed Frame Bracket. Use the include (2) 12mm x35mm Hex Head Bolts, (2) 12mm Nylock Nuts, and (4) 12mm Flat Washers (Figure 6). **NOTE :** The cradle on the Sidebar Bracket should be facing the rear of the vehicle. Do not tighten at this time.
5. Position Sidebar onto Mounting Brackets . Attach Sidebar to Mounting Brackets using the included (4)M6 Square Hex Bolt, (4) M6 Nylon Lock Nuts, and (4) M6 Flat Washers (Figure 7). Do not tighten at this time.
6. Adjust Sidebar properly; and then tighten all hardware at this time.
7. Repeat step 2-7 for passenger Sidebar.
8. Do periodic inspections to the installation to make sure that all hardware is secure and tight.

**To protect your investment**, wax this product after installing. Regular waxing is recommended to add a protective layer over the finish. Do not use any type of polish or wax that may contain abrasives that could damage the finish.

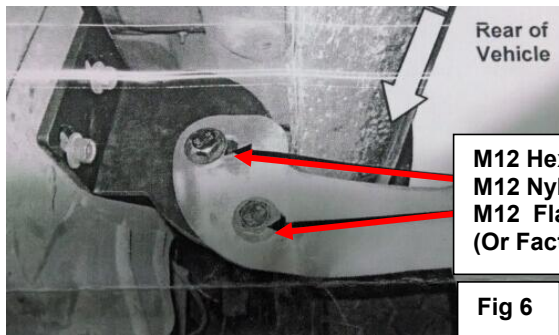
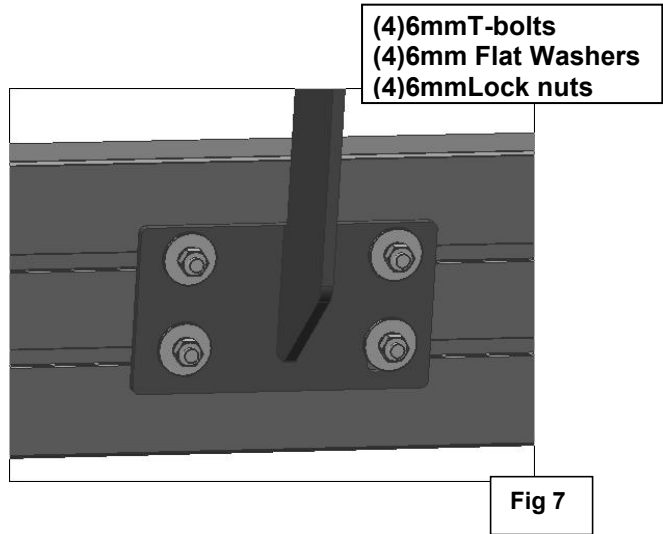
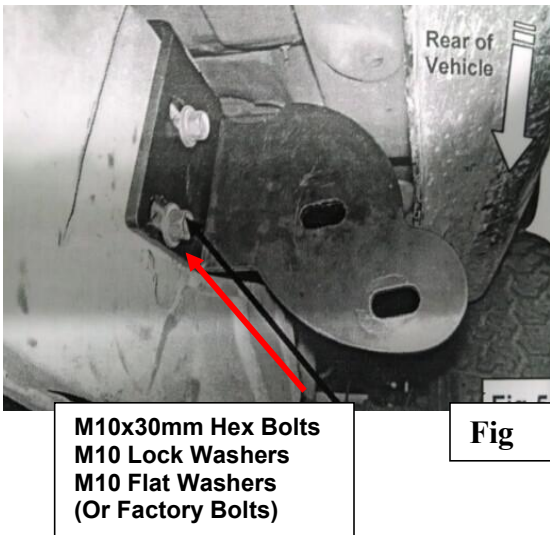
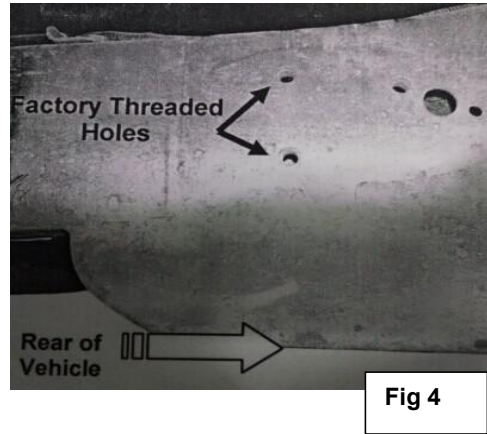
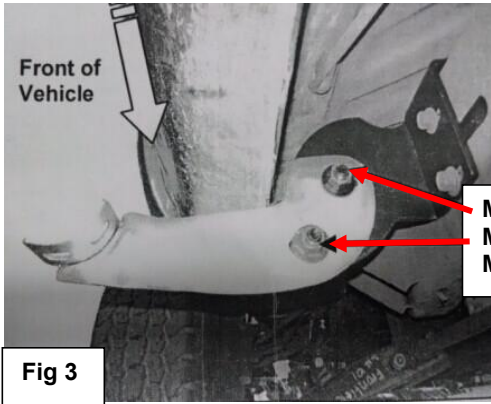
**For Polished Finishes:** Aluminum polish may be used to polish small scratches and scuffs on the finish. Mild soap may be used also to clean the Running Board.

**For black finishes:** Mild soap may be used to clean the Running Board.

### Driver Front Mounting Brackets Shown



M10 x 30mm Hex Bolts  
M10 Lock Washers  
M10 Flat Washers  
(Or Factory Bolts)



**\*Pictures are for reference only, actual brackets & bars may be a little different**