



iRunning Board Installation Instruction

Application: For 2016-2019 Kia Sorento

PARTS LIST:

Item	QTY	Description	Item	QTY	Description
#01	2	Running Board(use for left or right)	#08	4	M10 x 35mm – 54mm Bolt Plates
#02	1	Driver Front Mounting Bracket(DFM)	#09	8	M10X1.5 Hex Nuts
#03	1	Passenger Front Mounting Bracket(PFM)	#10	8	M10 Flat Washer
#04	1	Driver Rear Mounting Bracket(DRM)	#11	8	M10 Lock Washer
#05	1	Passenger Rear Mounting Bracket(PRM)	#12	16	M6X1.0 Nylon Lock Nuts
#06	2	M10 x 35mm – 67mm Bolt Plates	#13	16	M6X1.0 - 20 T-Bolts
#07	2	M10 x 40mm – 67mm Bolt Plates	#14	16	M6 Flat Washer



PROCEDURE:

- 1. REMOVE CONTENTS FROM BOX. VERIFY ALL PARTS ARE PRESENT. READ FACTORY BODY BOLT REMOVAL INSTRUCTIONS AND INSTALLATION INSTRUCTIONS CAREFULLY BEFORE STARTING INSTALLATION.**
2. Starting on the passenger side front of the vehicle, partially remove the front part of the undercover to locate and remove the round rubber plug on the bottom of the inner frame channel. Insert (1) M10 x 40mm – 67mm Bolt Plate into the hole. Insert the threaded bolt through the hole of the undercover. **(Figure 1)**
3. Remove the plastic round plug located on the outside pinch weld. Insert (1) M10 x 35mm – 54mm Bolt Plate into the hole. Position the Passenger Front Mounting Bracket up to vehicle and mount. **(Figure 2)** Reinstall the front part of the undercover and partially remove the rear part of the undercover.
4. Locate and remove the rubber plug near the rear. **(Figure 3)**

iRunning Board Installation Instruction

Application: For 2016-2019 Kia Sorento

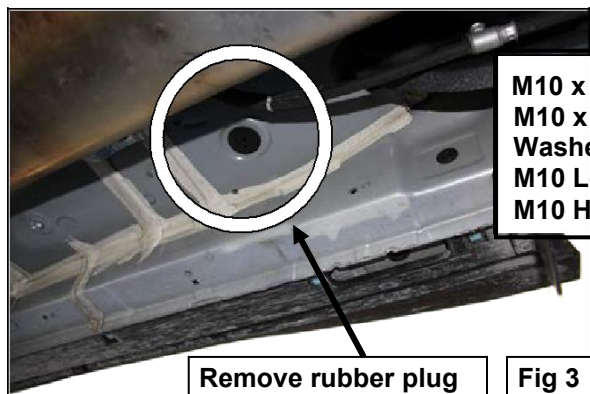
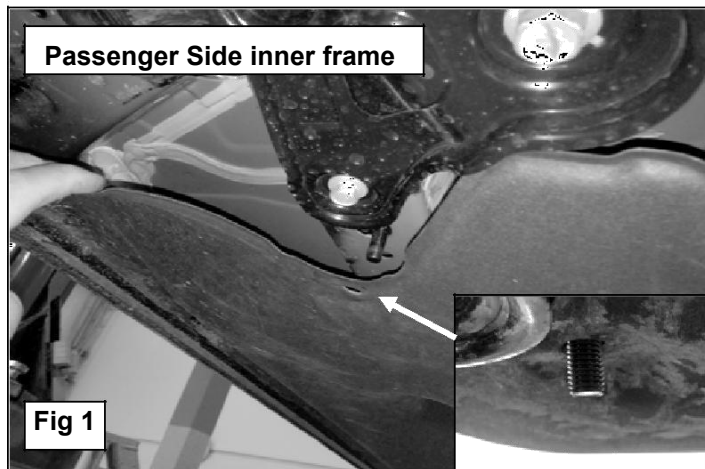
5. Insert (1) M10 x 35mm – 67mm Bolt Plate into the hole in figure 3 and attached passenger side Rear Mounting Bracket to mark hole drilling spot on the inside pinch weld. **(Figure 4)**
6. Remove bracket and drill a pilot hole on the marked drilling spot with a 3/16” drill bit. Enlarge hole with a unibit to 7/8”. **(Figure 5 & 6)** Ensure to coat the 7/8” hole with undercoating to prevent rust
7. Select a Running Board. Slip (8)6mm T-bolts into each bottom channel **(Figure 8)**. Carefully position the Running Board onto the (2) Mounting Brackets. **IMPORTANT:** Do not slide, (front to back), the Running Board on the Brackets or damage to the finish may result. Attach the Running Board to each Mounting Brackets with (4) M6 T-bolts, (4)M6 flat washers and (4)M6 lock nuts **(Figures 9)**. Do not tighten at this time.
8. Level and adjust Running Board properly and tighten all hardware. **NOTE: Torque all M6 nylon lock nuts to 7 lb-ft.**
9. Repeat **Steps 2—8** for driver Running Board installation.
10. Do periodic inspections to the installation to make sure that all hardware is secure and tight

To protect your investment, wax this product after installing. Regular waxing is recommended to add a protective layer over the finish. Do not use any type of polish or wax that may contain abrasives that could damage the finish.

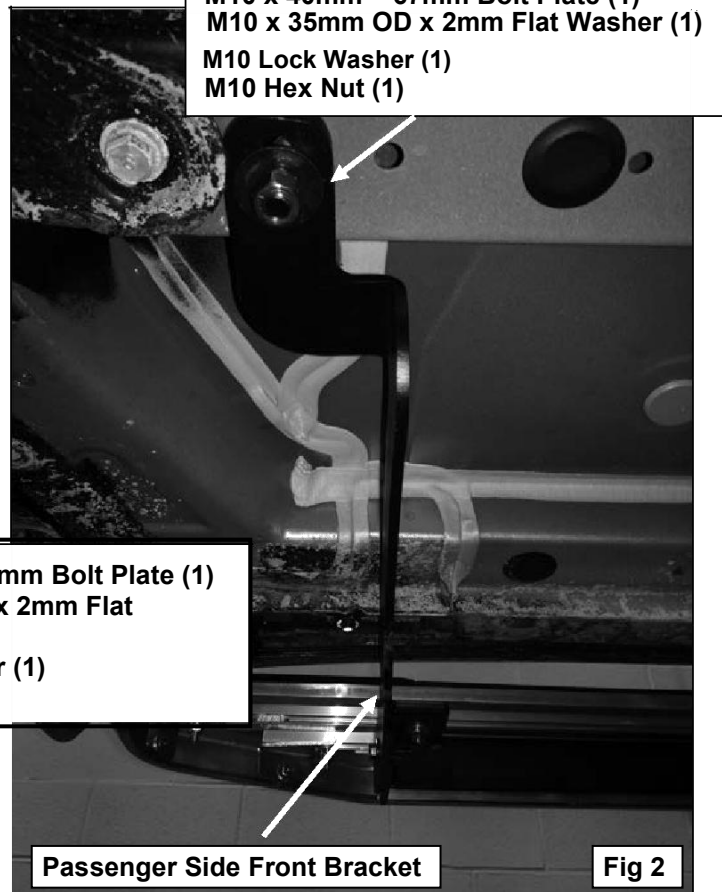
For Polished Finishes: Aluminum polish may be used to polish small scratches and scuffs on the finish. Mild soap may be used also to clean the Running Board.

For Black Finishes: Mild soap may be used to clean the Running Board.

Passenger Side Installation Pictured



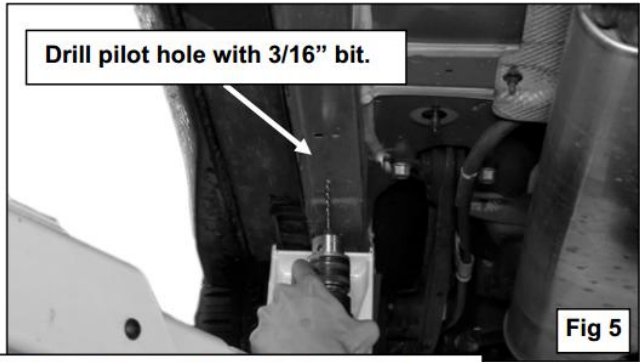
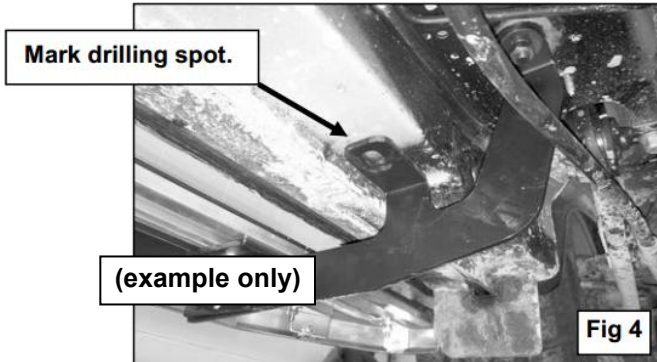
M10 x 35mm – 54mm Bolt Plate (1)
M10 x 30mm OD x 2mm Flat Washers (1)
M10 Lock Washer (1)
M10 Hex Nut (1)



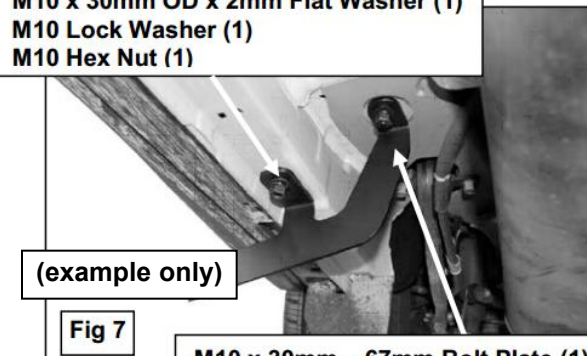
iRunning Board Installation Instruction

Application: For 2016-2019 Kia Sorento

Passenger Side Installation Pictured



- M10 x 30mm – 54mm Bolt Plate (1)
- M10 x 30mm OD x 2mm Flat Washer (1)
- M10 Lock Washer (1)
- M10 Hex Nut (1)



- M10 x 30mm – 67mm Bolt Plate (1)
- M10 x 30mm OD x 2mm Flat Washer (1)
- M10 Lock Washer (1)
- M10 Hex Nut (1)

Slip 6mm T-bolts into the bottom channel

