



## Installation Instruction

**Part#: IB10FAJ6B**

**Application: For 07-14 Jeep Wrangler 2Dr**

Item	Part Name	QTY	Item	Part Name	QTY
1	Driver Side bar	1	11	M10 Flat Washer	4
2	Passenger Side bar	1	12	M8x1.25-35 Hex Head Bolt	4
3	Passenger Front Mounting Bracket(RF)	1	13	8mm Lock Washer	4
4	Driver Front Mounting Bracket (LF)	1	14	8mm Large Flat Washer	4
5	Passenger Rear Mounting Bracket (RR)	1	15	6x1.0-25 Button Head Allen Bolt	8
6	Driver Rear Mounting Bracket (LR)	1	16	M6 Square Hex Bolt	16
7	4mm Allen Tool	1	17	M6 Large Flat Washer	8
8	10mm Nut Plate	4	18	M6X1mm Nylon Lock Nuts	24
9	M10x1.5-35 Hex Head Bolt	4	19	M6 Flat Washer	24
10	10mm Lock Washer	4			



**Bracket LF  
(Shorter)**



**Bracket LR  
(Longer)**



**Bracket RF  
(Shorter)**



**Bracket RR  
(Longer)**



**(4) M10 Nut Plate**

**Note: Pay very close attention to the overall length of the Brackets and direction of mounting tabs**

The instruction here is for your reference only. We strongly recommend the professional installer for best result. We are not responsible for any damage caused by the installation. Thank you for choosing our product!

## Installation Instruction

**Part#: IB10FAJ6B**

**Application: For 07-14 Jeep Wrangler 2Dr**

Step	Installation
1	<b><u>REMOVE CONTENTS FROM BOX.VERIFY ALL PARTS ARE PRESENT.READ INSTRUCTIONS CAREFULLY .USE ILLUSTRATION TO PORPERLY IDENTIFY BARCKETS AND SIDEBRS.</u></b>
2	Start installation toward the front of the driver side of the vehicle. Determine if the vehicle is has an open floor panel or a threaded hole in the floor panel for the top tab on the Bracket, <b>(Figures 1 &amp; 3)</b> . <b>a. <u>Vehicles open mounting location:</u></b> Insert (1) 10mm Nut Plate into the large square opening in the floor panel. Line up the threaded nut with the small hole in line with the tab on the Bracket, <b>(Figures 2A &amp; 2B)</b> . Bolt the Bracket to the Nut Plate with (1) 10mm x 35mm Hex Bolt, (1) 10mm Lock Washer and (1) 10mm Flat Washer. Do not tighten hardware, <b>(Figure 4)</b> . <b>b. <u>Vehicles with factory threaded hole in floor panel:</u></b> Bolt the tab on the Bracket to the threaded hole in the floor panel with (1) 8mm x 35mm Hex Bolt, (1) 8mm Lock Washer and (1) 8mm x 28mm OD Large Flat Washer, <b>(Figures 3 &amp; 4)</b> . Do not tighten hardware.
3	Line up the mounting plate on the Bracket with the (2) factory holes in the pinch weld. Bolt the Mounting Bracket to the <b>back</b> of the pinch weld using the included (2) 6mm x 25mm Button Head Allen Bolts, (2) 6mm x 18mm Small Flat Washers, (against pinch weld), (2) 6mm x 22mm OD Large Flat Washers, (inside against the bracket) and (2) 6mm Nylon Lock Nuts, <b>(Figure 4)</b> . Leave loose at this time.
4	Repeat <b>Steps 2 - 3</b> for driver side rear Mounting Bracket installation, <b>(Figures 3, 5A &amp; 5B)</b> . <b>NOTE:</b> Determine correct rear Bracket installation procedure for your model year: <b>a. 2007 - 8:</b> Use only the center hole on the Bracket and (1) 6mm x 25mm Allen Bolt, (1) 6mm Small Flat Washer (outside) and (1) 6mm Large Flat Washer, (inside against bracket), and (1) 6mm Nylon Lock Nut to attach rear bracket to the back of the pinch weld, <b>(Figures 6 &amp; 7)</b> . <b>b. 2008 - 12:</b> Requires (2) 6mm Allen Bolts, (2) 6mm Small Flat Washers (outside) and (2) 6mm Large Flat Washers, (inside against bracket), and (2) 6mm Nylon Lock Nuts to attach rear bracket to back of pinch weld, <b>(Figures 6 &amp; 8)</b> .
5	Carefully unwrap and position the driver Sidebar onto the Brackets. Attach the Sidebar to the Mounting Brackets using the included (4)M6 Square Hex Bolt (4)M6 Nylon Lock Nuts (4)M6 Flat Washers <b>(Figure 4)</b> . Do not tighten at this time. <b>NOTE:</b> The Sidebar has (2) sets of inserts to bolt the Sidebar to the rear Bracket. <b>a. 2007:</b> Use the rear set of inserts closest to the rear tire, <b>(Figure 7)</b> . <b>b. 2008 - 12:</b> Use the forward set of inserts, <b>(Figure 8)</b> .
6	Level and adjust the Side Bar and Brackets and tighten all hardware.
7	Repeat <b>Steps 2 - 6</b> for Passenger Sidebar installation.
8	Do periodic inspections to the installation to make sure that all hardware is secure and tight.

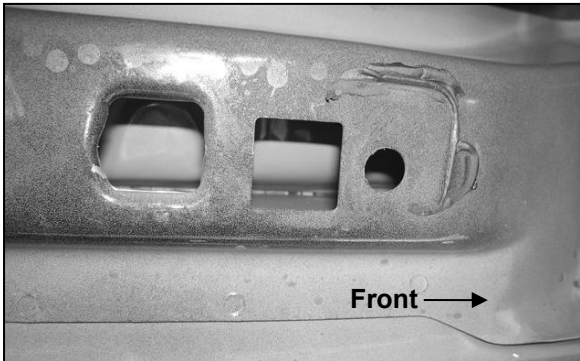
**To protect your investment**, wax this product after installing. Regular waxing is recommended to add a protective layer over the finish. Do not use any type of polish or wax that may contain abrasives that could damage the finish.  
**For stainless steel:** Aluminum polish may be used to polish small scratches and scuffs on the finish. Mild soap may be used also to clean the Sidebar.  
**For gloss black finishes:** Mild soap may be used to clean the Sidebar.

The instruction here is for your reference only. We strongly recommend the professional installer for best result. We are not responsible for any damage caused by the installation. Thank you for choosing our product!

# Installation Instruction

Part#: IB10FAJ6B

Application: For 07-14 Jeep Wrangler 2Dr



(Fig 1) 2007-10 driver side front mounting location



(Fig 2B) Nut Plate

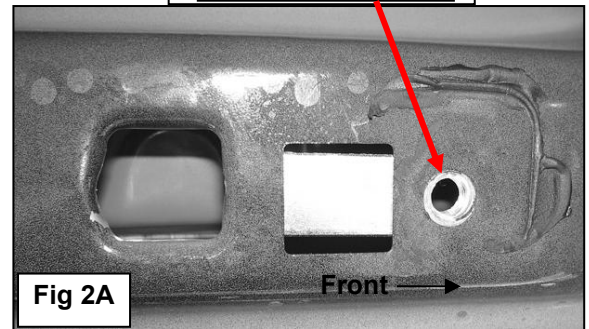
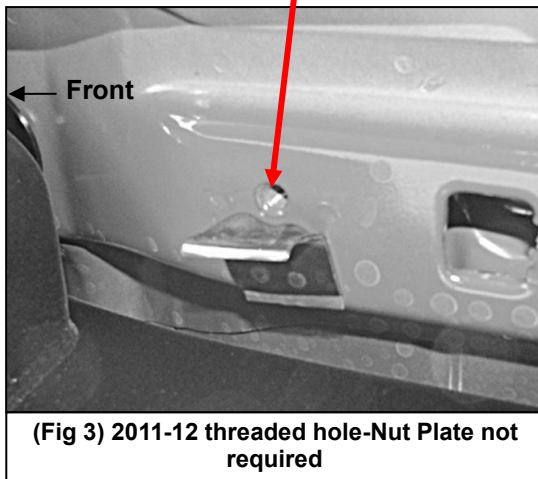


Fig 2A

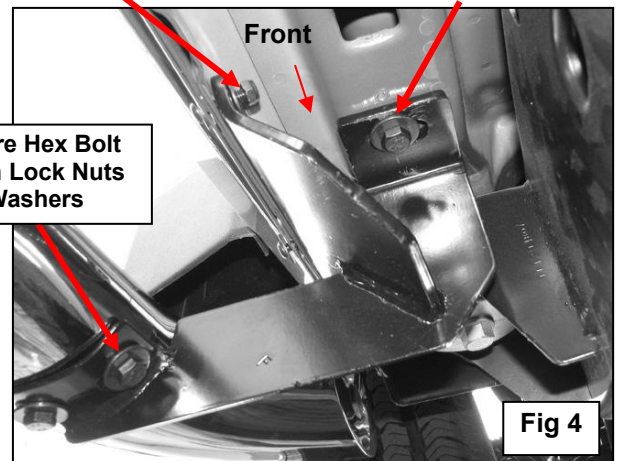
Vehicles with threaded hole in body panel use:  
8mm x 35mm Hex Bolt  
8mm Large Flat washer  
8mm Lock Washer

6mm x 25mm Allen Bolt,  
6mm x 18mm Small Flat Washer (outer)  
6mm ID x 23mm Large Flat Washer (inner)  
6mm Nylon Lock Nut

(1)10mm x 35mm Hex Bolt  
(1)10mm Flat Washer  
(1)10mm Lock Washer



(Fig 3) 2011-12 threaded hole-Nut Plate not required



(4)M6 Square Hex Bolt  
(4)M6 Nylon Lock Nuts  
(4)M6 Flat Washers

Fig 4

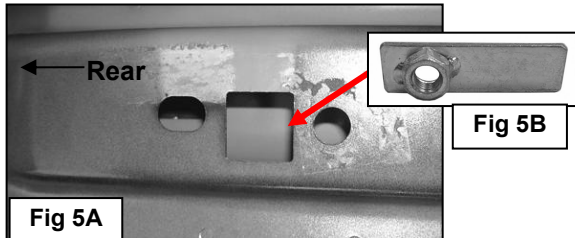
**\*Pictures are for reference only, actual brackets & bars may be a little different \***

The instruction here is for your reference only. We strongly recommend the professional installer for best result. We are not responsible for any damage caused by the installation. Thank you for choosing our product!

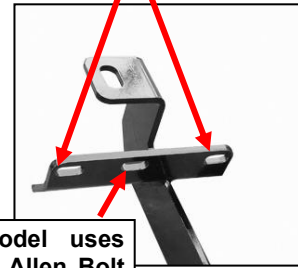
# Installation Instruction

Part#: IB10FAJ6B

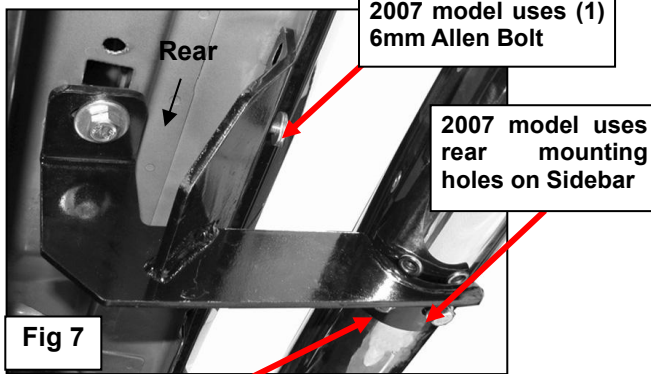
Application: For 07-14 Jeep Wrangler 2Dr



2008-12 uses (2)  
6mm Allen Bolts in  
outside holes

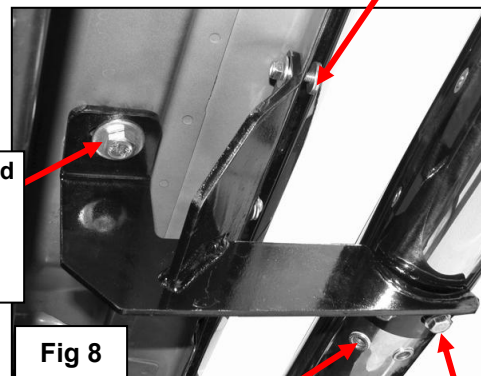


2007 model uses  
(1) 6mm Allen Bolt  
in center hole



8mm x 25mm Hex Bolts  
8mm Flat washers  
8mm Lock Washers

2008-12 uses (2)  
6mm Allen Bolts



Vehicles with threaded  
hole in body panel use:  
8mm x 35mm Hex Bolt  
8mm Large Flat washer  
8mm Lock Washer

\*Pictures are for reference only,  
actual brackets & bars may be a  
little different \*

2008 - 12 model uses  
forward mounting  
holes on Sidebar

(4)M6 Square Hex Bolt  
(4)M6 Nylon Lock Nuts  
(4)M6 Flat Washers

The instruction here is for your reference only. We strongly recommend the professional installer for best result. We are not responsible for any damage caused by the installation. Thank you for choosing our product!