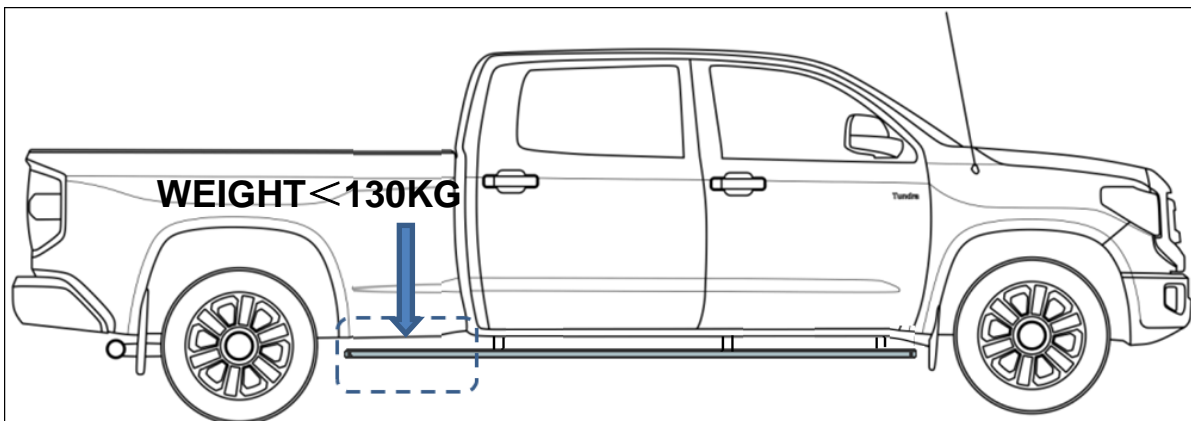


PARTS LIST:

Item	QTY	Description	Item	QTY	Description
#1	2	Running Board(use for left or right)	#10	4	M10 Lock Washers
#2	4	Mounting Brackets	#11	4	M10 Hex Nuts
#3	2	Driver Center Mounting Brackets(DCM/PCM)	#12	12	8mm Plastic Washers
#4	1	Passenger Rear Mounting Brackets(DRM)	#13	12	8mm x 24mm OD x 2mm Washers
#5	1	Passenger Rear Mounting Brackets(PRM)	#14	12	M8 Nylon Lock Nuts
#6	2	M10-40 Bolt Plates	#15	16	6mm x 22mm OD x 2mm Flat Washers
#7	2	M10-30 Bolt Plates	#16	16	M6 Nylon Lock Nuts
#8	4	10mm Plastic Washers	#17	16	M6X1.0 - 20mm T-Bolts
#9	4	M10 Flat Washers			



IMPORTANT ALERT: FOR WHEEL TO WHEEL APPLICATION, WEIGHT TO THE REAR END AREA OF THE RUNNING BOARD BEHIDE THE LAST BRACKET NEED TO LESS THEN 130KG.OVERWEIGHT IN THIS AREA MAYBE DAMAGE YOUR RUNNING BOARD.



PROCEDURE:

REMOVE CONTENTS FROM BOX. VERIFY ALL PARTS ARE PRESENT. READ INSTRUCTIONS CAREFULLY BEFORE STARTING INSTALLATION. ASSISTANCE IS RECOMMENDED.

1. Start the installation under the passenger side of the vehicle. Locate the front factory running board mounting location along the inner side of the body, (**Figure 1**).

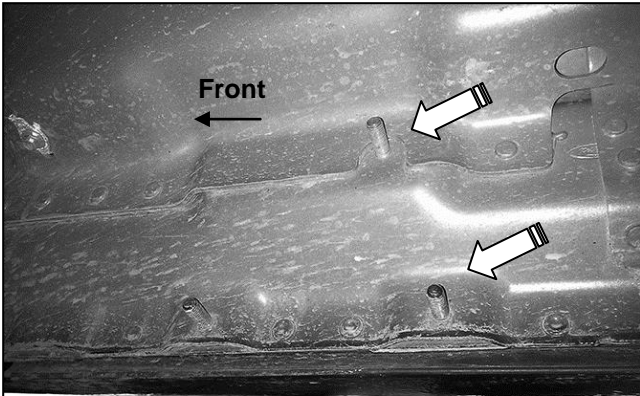
2. Slide (1) Plastic Washer over each factory mounting stud in the body panel, **(Figures 2 & 3)**.
IMPORTANT: The Plastic Washers are designed to prevent corrosion between the aluminum body panel and the steel mounting brackets. **Do not install the Brackets without the Plastic Washers.**
3. Select (1) Driver/Left Mounting Brackets. **NOTE:** All (4) Brackets are universal and will fit left or right side for front, rear center mounting location. Attach the Mounting Bracket to the (3) factory studs with (3) M8 Flat Washers and (3) M8 Nylon Lock Nuts, **(Figure 4)**. Snug but do not fully tighten the hardware.
4. Repeat **Steps 1-3** to install the other (3) Brackets.
5. Move to the center body mount, **(Figure 5)**. Remove the (2) factory hex flange nuts on the bottom of the mount. Select (1) Center Mounting Bracket. **NOTE:** Center Brackets will fit passenger or driver side. Reuse the factory hex nuts to attach the Center Bracket to the underside of the body mount, **(Figures 5 & 6 & 7)**.
6. Move to the rear body mount at the back of the cab. Locate the oval hole in the body mount support directly above the square hole in the side of the body panel, **(Figure 8)**. Thread (1) 10mm Plastic Washer onto (1) 10mm x 40mm T-Bolt, **(Figure 9)**. Thread the Plastic Washer all the way down the threaded end of the T-Bolt. By hand, (pliers can also be used), bend the sides of the Plastic Washer up around the sides of the Bolt Plate, **(Figure 10)**.
7. Insert the Bolt Plate and Washer into the oval hole. Once the Bolt Plate is in the hole, thread a second Plastic Washer down until it is tight against the body panel, **(Figure 11)**. If necessary, use scissors to trim plastic washer for easier installation. **IMPORTANT:** Do not install the rear Bolt Plates and Brackets without the Plastic Washers.
8. Next, locate the square hole in the side of the body panel, **(Figure 8)**. Select the 10mm x 35mm Bolt Plate and (1) 10mm Plastic Washer, **(Figure 12)**. Repeat to insert the Bolt Plate and Plastic Washer into the square hole. Trim Plastic Washer as required, **(Figure 13)**. Once the Bolt Plate is in the hole, thread a second Plastic Washer down until it is tight against the body panel, **(Figure 14)**.
9. Select the driver side rear Bracket. Slide the Bracket over the (2) Bolt Plates. Attach the Bracket to the Bolt Plates with (2) 10mm Flat Washers, (2) 10mm Lock Washers and (2) 10mm Hex Nuts, **(Figure 15)**. Leave hardware loose at this time.
10. Once the (4) Brackets have been fully installed, select (1) Running Board. Place the Running Board on top of the Brackets. Locate the channels in the bottom of the Running Board. Select (6) M6x1.0 - 20mm T-Bolts. Insert the T-Bolts into the channels in the bottom of the Running Board closest to the Brackets, **(Figure 16)**. Lift the Board up and guide the studs through the Brackets.
11. Attach the Running Board to the Brackets with (2) 6mm ID x 22mm OD x 2mm Flat Washers and (2) M6 Nylon Lock Nuts, **(Figure 17&18)**. **NOTE:** The Running Board is designed to fit close to the vehicle. It may be necessary to loosen the Bracket hardware slightly and tilt the Brackets downward to insert the Running Board between the Brackets and the body.
12. Level and adjust the Running Board as necessary and fully tighten all hardware.
13. Repeat **Steps 1-12** for the driver side Running Board installation.
14. Do periodic inspections to the installation to make sure that all hardware is secure and tight.

To protect your investment, wax this product after installing. Regular waxing is recommended to add a protective layer over the finish. Do not use any type of polish or wax that may contain abrasives that could damage the finish.

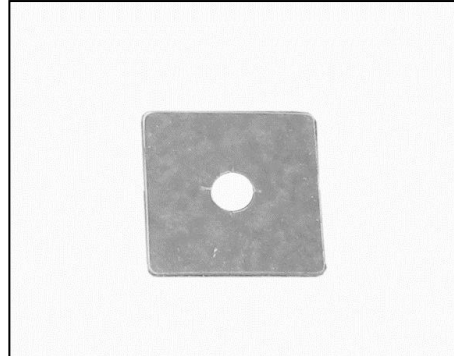
For Polished Finishes: Aluminum polish may be used to polish small scratches and scuffs on the finish. Mild soap may be used also to clean the Running Board.

For black finishes: Mild soap may be used to clean the Running Board.

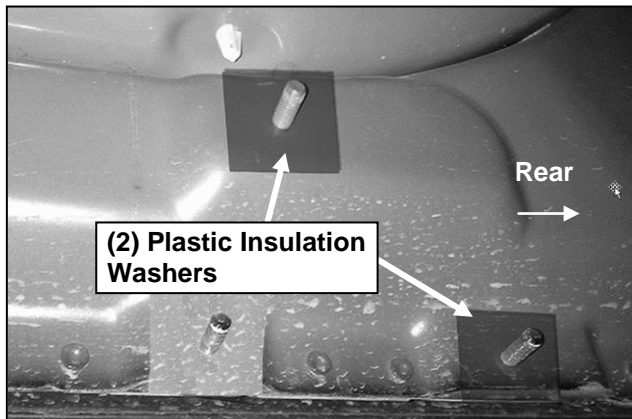
Passenger/right Side Installation Pictured



(Fig 1) Passenger side front mounting location



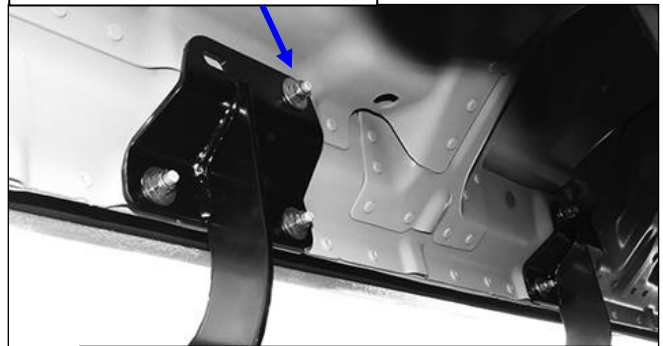
(Fig 2) Plastic Insulation Washer



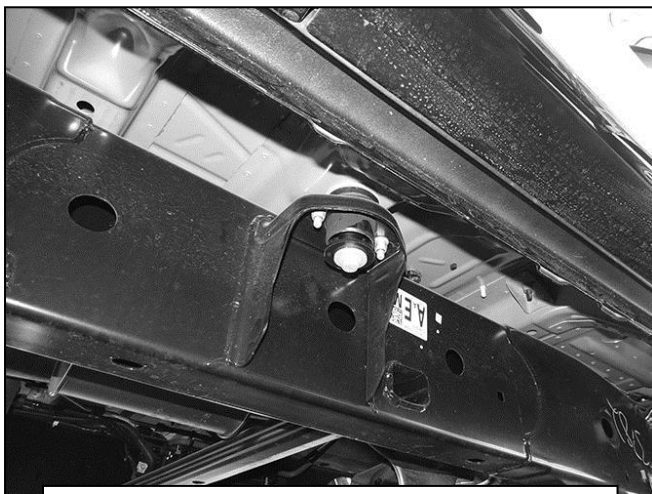
(2) Plastic Insulation Washers

(Fig 3) Thread Plastic Washers onto two mounting studs. Passenger side front mounting location pictured

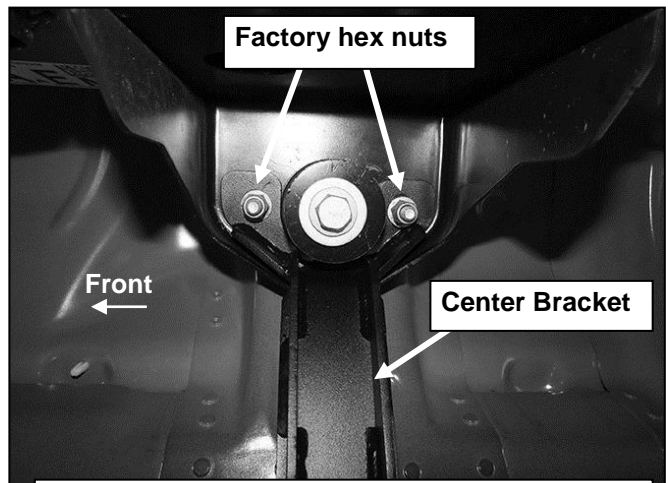
- (3) 8mm Plastic Washers
- (3) 8mm Flat Washers
- (3) 8mm Nylon Lock Nuts



(Fig 4) Passenger/right front installation



(Fig 5) Passenger/right center body mount



Factory hex nuts

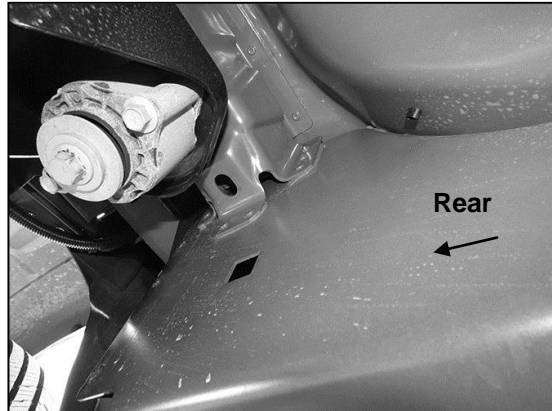
Front

Center Bracket

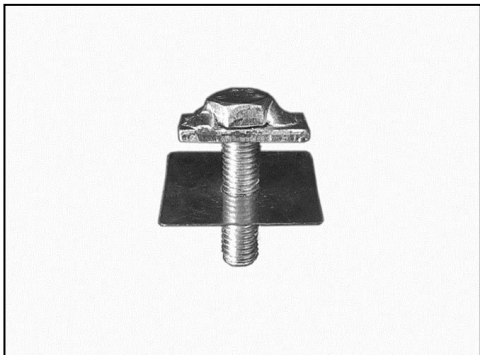
(Fig 6) Reuse factory hex nuts to attach center Bracket to underside of center body mount



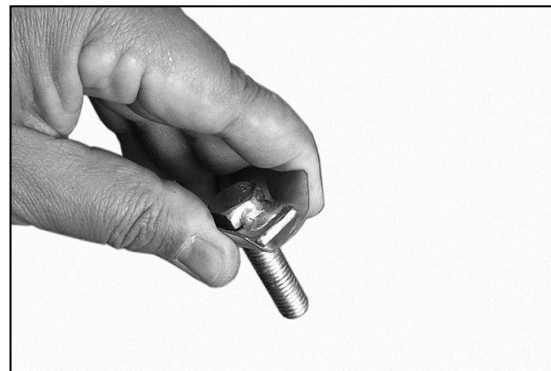
(Fig 7) Passenger/right center Bracket installed



(Fig 8) Driver side rear mounting location



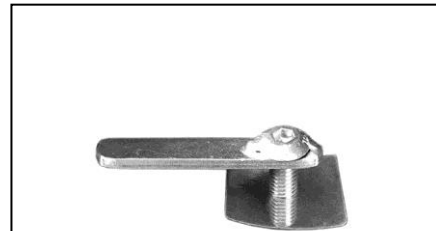
(Fig 9) 10mm T-Bolt with Plastic Washer



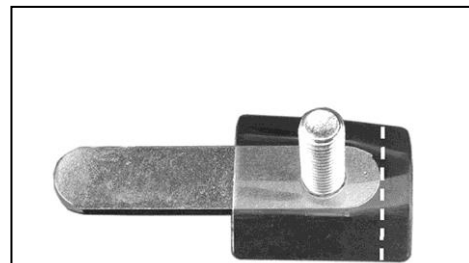
(Fig 10) By hand, bend sides of Plastic Washer up around T-Bolt (pliers may also be



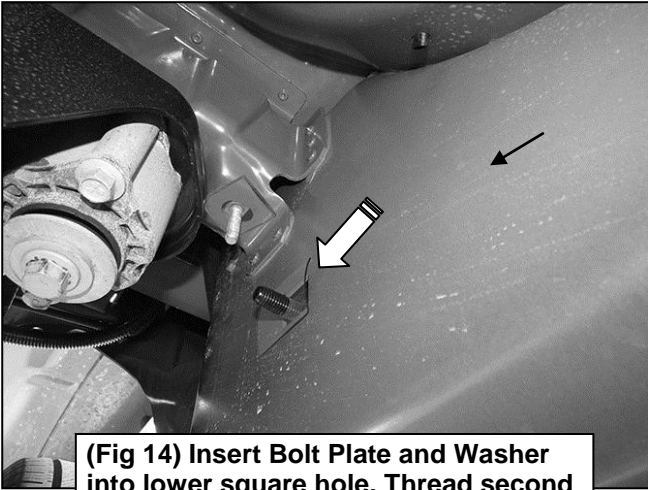
(Fig 11) Insert T-Bolt and folded Washer into oval hole. Thread second Plastic Washer onto T-Bolt



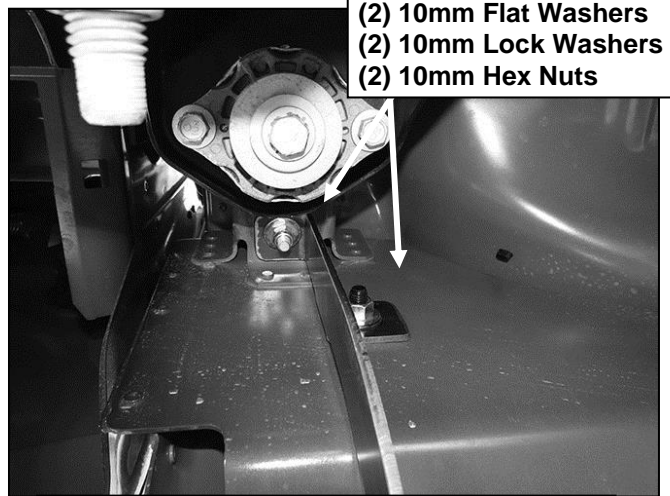
(Fig 12) 10mm Bolt Plate with Plastic Washer



(Fig 13) Bend sides of Plastic Washer up around Bolt Plate. If necessary, use scissors to cut off overhanging plastic. Cut washer on Bolt Plate installation only



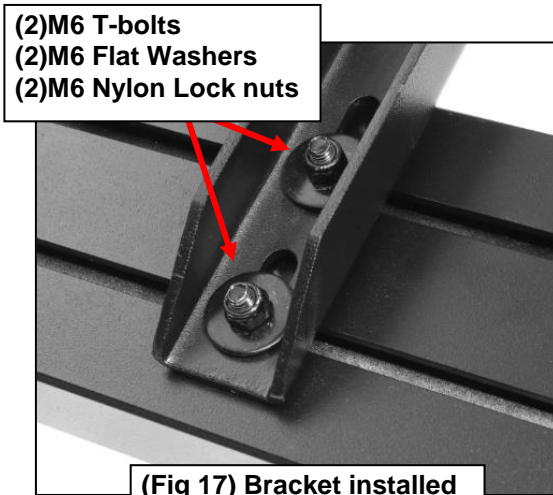
(Fig 14) Insert Bolt Plate and Washer into lower square hole. Thread second Plastic Washer onto Bolt Plate



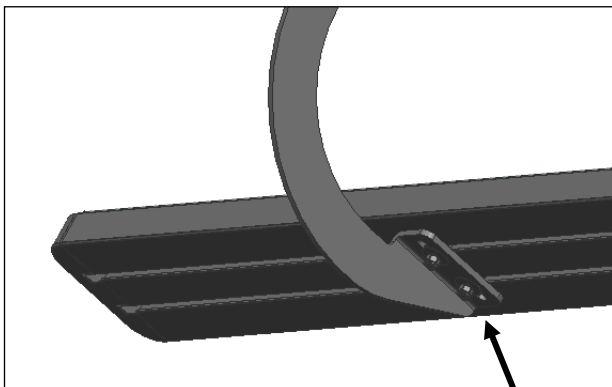
(Fig 15) Driver side rear Bracket installation



(Fig 16) Slip M6 T-bolts into the bottom channel



(Fig 17) Bracket installed



(Fig 18) Bracket installed

(2) 6mm T-bolts
(2) 6mm Flat Washers
(2) 6mm Nylon Lock Nuts