



iRunning Board Installation Instruction

Application: 2015-2017 Ford F-150 Super Cab

Item	Part Name	QTY	Item	Part Name	QTY
1,2	Driver, Passenger Running Board	2	5	M8 Flat Washers	20
3	Mounting Bracket	4	6	M8 Nylon Lock Nuts	20
4	Plastic Washers	20	7	M8 Square head Bolt	8



Mounting Bracket

NOTE: All Brackets are universal and will fit both side of the vehicle!

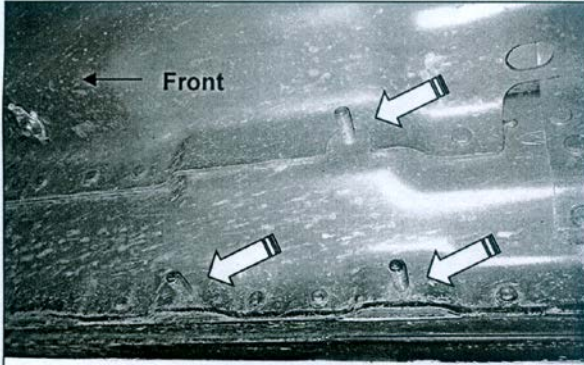
Step	Installation Instruction
1	VERIFY ALL PARTS ARE PRESENT. READ INSTRUCTIONS CAREFULLY BEFORE STARTING INSTALLATION. ASSISTANCE IS RECOMMENDED.
2	Start the installation under the passenger side of the vehicle. Locate the front factory running board mounting location along the inner side of the body. (Fig 1)
3	Select (1) Plastic Washer over each of the (3) factory mounting studs in the body panel, (Fig 2 & 3) . IMPORTANT: The Plastic Washers are designed to prevent corrosion between the aluminum body panel and the steel mounting brackets. Do not install the Brackets without the Plastic Washers.
4	Attach the Mounting Bracket to the (3) factory studs with (3) 8mm Flat Washers and (3) 8mm Nylon Lock Nuts, (Fig 4 & 5) . Leave brackets loose at this time.
5	Repeat Steps 2-4 to install the (2) remaining center and rear passenger side Brackets.
6	Carefully unwrap and select the passenger side Running Board. Slide (2) Square head Bolt into each channel, (Fig 6) . Slide the Square head Bolt forward or back to line up with the (2) previously installed Brackets..
7	Hold the Running Board up to the vehicle at a slight angle and gently push it into position against the end of the brackets. It may be necessary to loosen the Brackets to fit the Running Board between the Brackets and the body panel. Attach the Running Board to the Mounting Brackets with the included (4) M8 Flat Washers, and (4) M8 Nylon Lock Nuts, (Fig 7 & 8) . Do not tighten hardware at this time .
8	Level and adjust the Running Board as desired and tighten all hardware.
9	Repeat Steps 2-8 for driver side Running Board installation, Installation Completed.

The instruction here is for your reference only. We strongly recommend the professional installer for best result. We are not responsible for any damage caused by the installation. Thank you for choosing our product!

iRunning Board Installation Instruction

Application: 2015-2017 Ford F-150 Super Cab

Driver/Left Side Installation Pictured

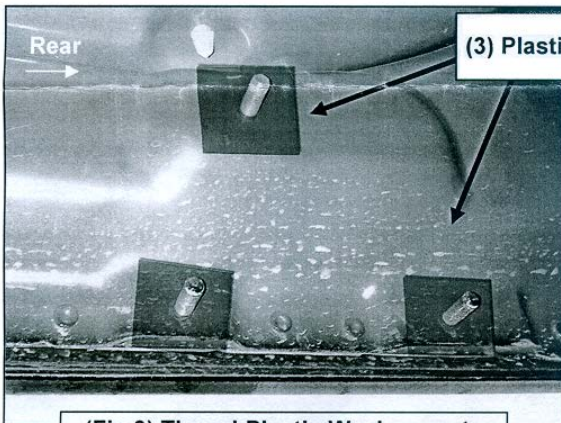


(Fig 1) Passenger side front mounting location

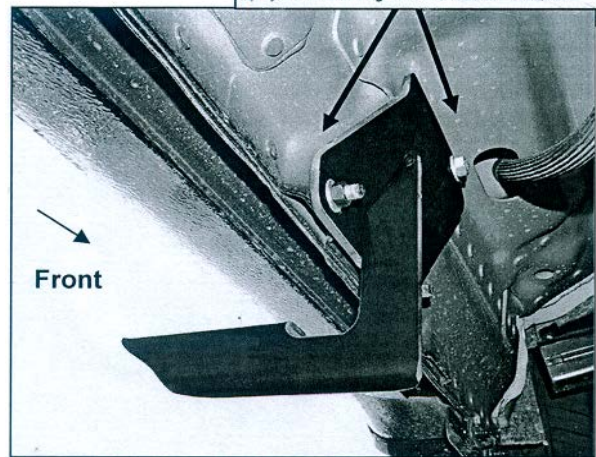


(Fig 2) Plastic Washer

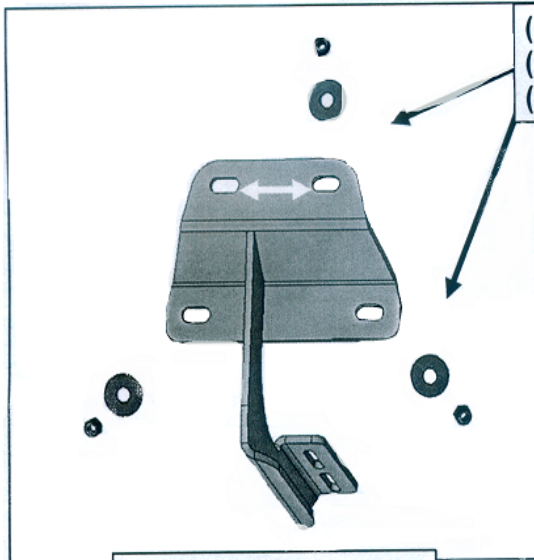
- (3) 8mm Plastic Washers
- (3) 8mm Flat Washers
- (3) 8mm Nylon Lock Nuts



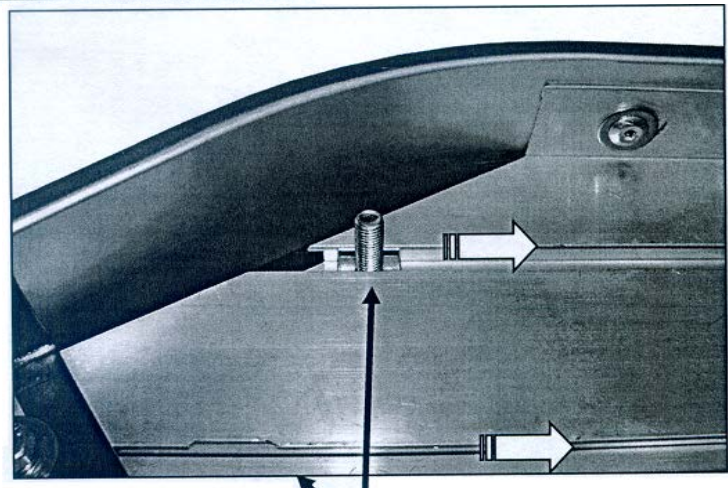
(Fig 3) Thread Plastic Washers onto all mounting studs. Passenger side rear mounting location pictured



(Fig 4) Driver side front Bracket installation



(Fig 5) Typical Bracket installation illustrated



(Fig 6) M8 Square head Bolt into channels in bottom of Running Board

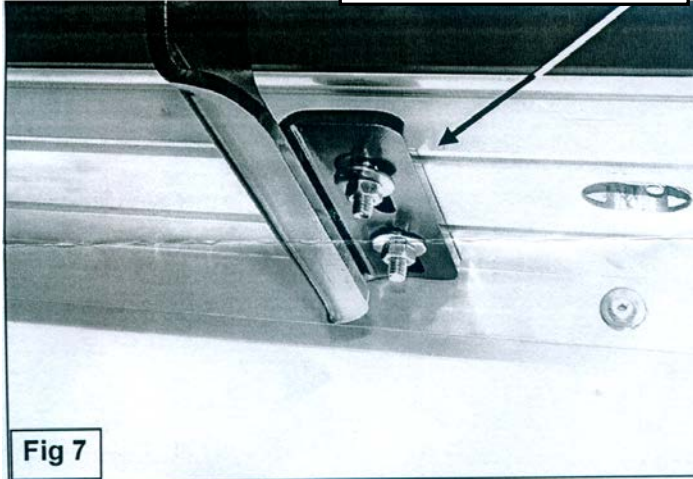
The instruction here is for your reference only. We strongly recommend the professional installer for best result. We are not responsible for any damage caused by the installation. Thank you for choosing our product!

iRunning Board Installation Instruction

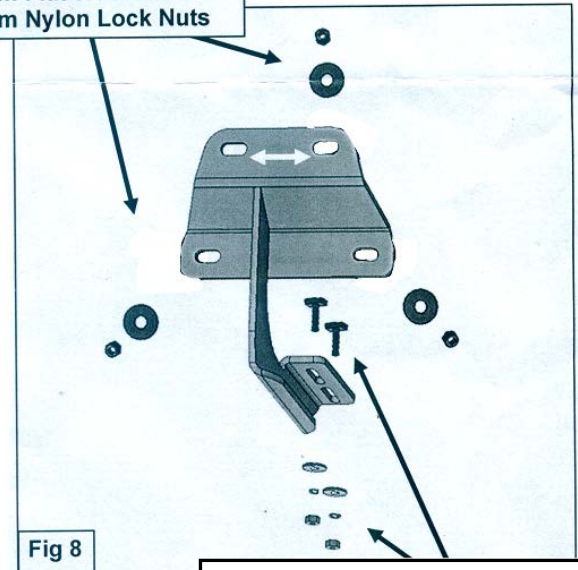
Application: 2015-2017 Ford F-150 Super Cab

Driver Side Installation Pictured

- (2) M8 Square head Bolt
- (2) M8 Flat Washers
- (2) M8 Nylon Lock Nuts



- (3) 8mm Plastic Washers
- (3) 8mm Flat Washers
- (3) 8mm Nylon Lock Nuts



- (2) M8 Square head Bolt
- (2) M8 Flat Washers
- (2) M8 Nylon Lock Nuts



***Pictures are for reference only, actual brackets & bars may be a little different ***

To protect your investment: wax this product after installing. Regular waxing is recommended to add a protective layer over the finish. Do not use any type of polish or wax that may contain abrasives that could damage the finish.

For Polished finishes: Aluminum polish may be used to polish small scratches and scuffs on the finish. Mild soap may be used also to clean the Running Board.

The instruction here is for your reference only. We strongly recommend the professional installer for best result. We are not responsible for any damage caused by the installation. Thank you for choosing our product!