



## iRunning Board Installation Instruction

**Application: 2011-2014 Dodge Durango (Will Not Fit With OE Skirt Cladding)**

Item	Part Name	QTY	Item	Part Name	QTY
1	Running Boards (Driver+Passenger)	2	9	M10x1.5-30mm Hex Bolt	2
2	Front Mounting Bracket (FB)	2	10	M10 Lock Washers	4
3	Rear Mounting Bracket (RB)	4	11	M10 Flat Washers	4
4	M8X1.25-20mm Hex Bolt	8	12	M10 HEX NUTS	2
5	M8 Flat Washers	16	13	M6x1.25-20 Square Head Bolt	8
6	M8 INTERNAL TOOTH LOCK WASHERS	8	14	M6 Flat Washers	8
7	M8 HEX NUTS	8	15	M6X1.25mm Nylon Lock Nuts	8
8	M10 J BOLTS	2			



Front Mounting Bracket



Rear Mounting Bracket

**NOTE: The Bracket are identical for both Driver side and Passenger side!**

Step	Description
1	Verify all parts listed are present and free from damage. Carefully read and understand all instructions before attempting installation.
2	Starting from the front drivers side of the vehicle Install J-Bolt in the large hole in the frame . <b>(FIG 1, 2)</b> <b>Note: Dodge Durango requires pinch weld holes used for installation to be drilled out to 3/8" and one additional hole to be drilled through the pinch weld in the rear of the vehicle. (FIG 6)</b>
3	Install front bracket to the J-Bolt using (1) large flat washer, (1) large split lock washer and (1) 3/8" hex nut. Secure the front bracket to the outside of the pinch weld using (2) M8 hex head bolts, (4) M8 flat washers, (2)M8 internal tooth lock washers and (2) M8 hex nuts. Do not tighten fully at this time. <b>(FIG 3,4)</b>
4	Remove the M10 fuel tank strap bolt and install the rear bracket using (1) M10 hex head bolt, (1) large flat washer and (1) split lock washer. Secure the rear bracket to the outside of the pinch weld using (2) M8 hex head bolts, (4) M8 flat washers, (2) M8 internal tooth lock washers and (2) M8 hex nuts. Do not tighten fully at this time. <b>(FIG 5,6)</b>
5	Take the drivers side running board and slide (4) M6 square head bolts into the grooves in the bottom of the running boards. Align the square head bolts to the holes in the mounting brackets and attach using (4) M6 flat washers, and (4) M6 nylon lock nuts. Do not fully tighten at this time.
6	Repeat steps 2-5 for the passenger side.

The instruction here is for your reference only. We strongly recommend the professional installer for best result. We are not responsible for any damage caused by the installation. Thank you for choosing our product!

# iRunning Board Installation Instruction

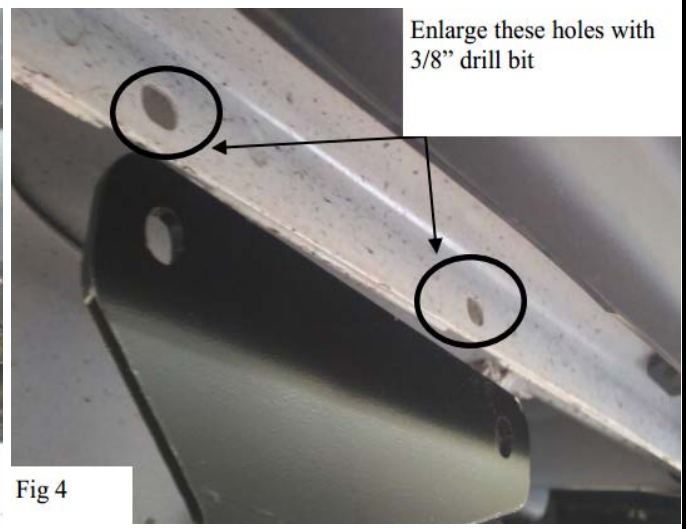
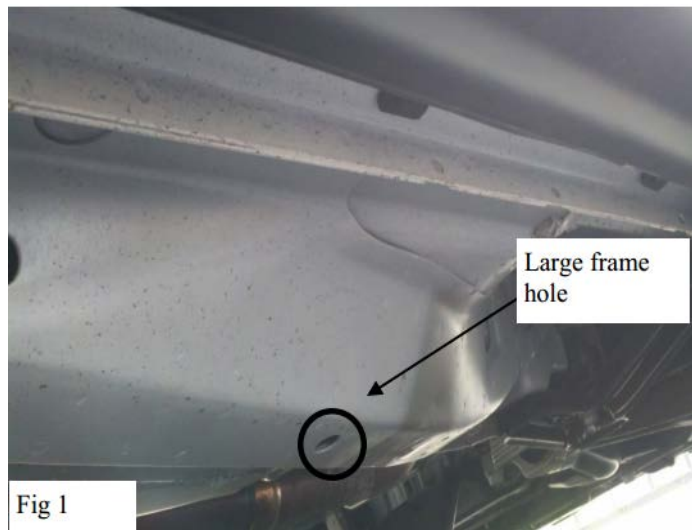
## Application: 2011-2014 Dodge Durango (Will Not Fit With OE Skirt Cladding)

7	Tighten all fasteners at this time. Torque all M10 fasteners to 35-40 ft lbs, and M8 to 30-35 ft lbs, M6 to 25 ft lbs, and M6 fasteners to 35-30 ft lbs
---	---

### CARE INSTRUCTIONS

- REGULAR WAXING IS RECOMMENDED. DO NOT USE ANY TYPE OF POLISH OR WAX THAT MAY CONTAIN ABRASIVES
- STAINLESS STEEL PRODUCTS CAN BE CLEANED WITH MILD SOAP AND WATER. STAINLESS STEEL POLISH SHOULD BE USED TO POLISH SMALL SCRATCHES.
- GLOSS BLACK FINISHES SHOULD BE CLEANED WITH MILD SOAP AND WATER

### Driver/left Side Installation Pictured

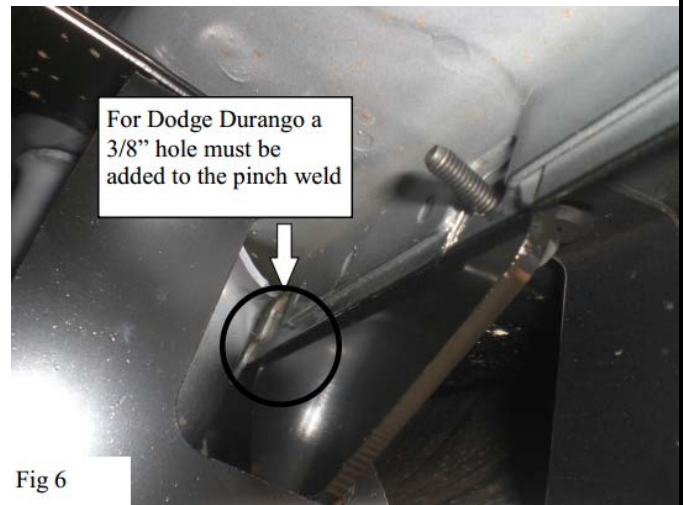


**\*Pictures are for reference only, actual bars may be a little different.**

The instruction here is for your reference only. We strongly recommend the professional installer for best result. We are not responsible for any damage caused by the installation. Thank you for choosing our product!

# iRunning Board Installation Instruction

**Application: 2011-2014 Dodge Durango (Will Not Fit With OE Skirt Cladding)**



**\*Pictures are for reference only, actual bars may be a little different.**

The instruction here is for your reference only. We strongly recommend the professional installer for best result. We are not responsible for any damage caused by the installation. Thank you for choosing our product!