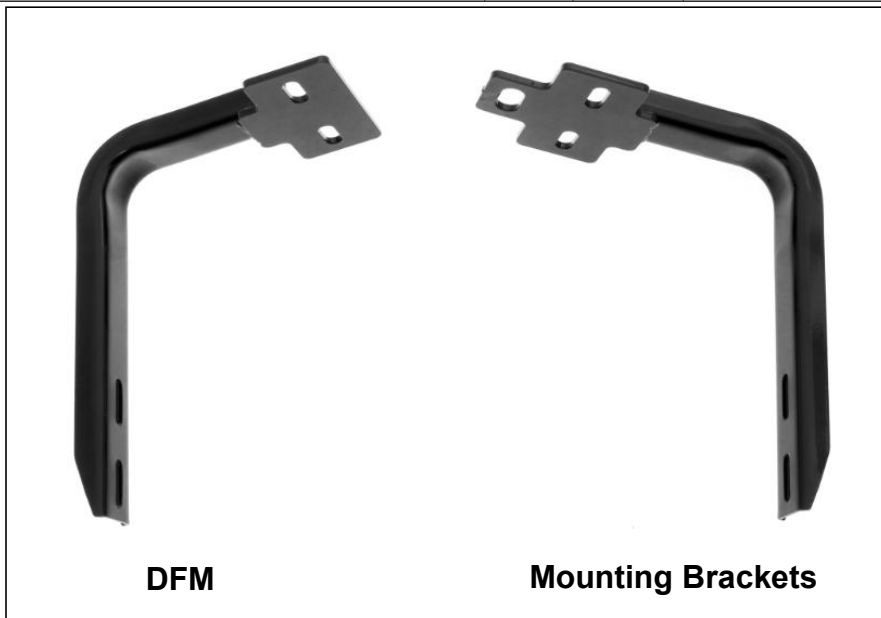


# iRunning Board Installation Instruction

**Application: For 2009-2018 Dodge Ram 1500 Crew Cab/ 2010-2018 Dodge Ram 2500/3500/4500/5500 Crew Cab**

## **PARTS LIST:**

Item	QTY	Description	Item	QTY	Description
#1	2	Running Board(use for left or right)	#10	5	M12 Hex Nuts
#2	1	Driver Front Mounting Brackets( DFM)	#11	12	M8 Lock Washers
#3	5	Mounting Brackets	#12	12	M8 Flat Washers
#4	5	M12 Bolt Plates	#13	6	M8 Hex Nuts
#5	5	12mm Plastic Retainers	#14	12	M8 x1.25 - 30mm Hex Bolts
#6	6	M8 Nut/Bolt Plates	#15	12	M6 Flat Washers
#7	6	8mm Plastic Retainers	#16	12	M6 Nylon Lock Nuts
#8	5	M12 Lock Washers	#17	12	M6 x1- 20mm T-Bolts
#9	5	M12 Flat Washers			



## **PROCEDURE:**

- 1. REMOVE CONTENTS FROM BOX. VERIFY ALL PARTS ARE PRESENT. READ INSTRUCTIONS CAREFULLY BEFORE STARTING INSTALLATION. DRILLING MAY BE REQUIRED.**
- 2. Starting at the driver side-front of the vehicle, remove the sealing tape covering the factory holes in the side of the inner panel, (Figure 1).**
- 3. Mounting Bracket Installation:**
  - Models without factory threaded inserts in body panel:**
    - a. Partially thread an M8 Hex Bolt onto the threaded end of a M8 Bolt and Nut Plate, (Figure 2). Thread the Hex Bolt in until it is flush with the welded nut, (Figure 3). Use the Hex Bolt as a handle and insert the Bolt and Nut Plate into the oval hole, (Figure 4). Feed the threaded bolt on the Bolt Plate through one of the hex shaped factory holes. Thread (1) 8mm Plastic Retainer onto the threaded end and down tight against the body panel, (Figure 5). NOTE: The Plastic Retainer is designed to keep the Bolt/Nut Plate from falling into the body panel and to aid in Bracket installation.**
    - b. Remove the M8 Hex Bolt from the nut on the Bolt Plate from Step 3a. Rotate the Bolt on the Bolt Plate until the threaded nut lines up with the remaining hole in the Mounting Bracket and body panel, (Figures 8).**
    - c. For driver side center and rear Mounting Bracket installation: Select (1) M12 Bolt Plate, insert the bolt plate into the upper slot of the vehicle. Use (1) 12mm Plastic Retainer to hold the bolt plate (Figure 6).**

## iRunning Board Installation Instruction

**Application: For 2009-2018 Dodge Ram 1500 Crew Cab/ 2010-2018 Dodge Ram 2500/3500/4500/5500 Crew Cab**

d. Select (1) Mounting Bracket, attach the Mounting Bracket to the vehicle (**Figure 7 & 8a & 8b**).

**Models with factory threaded inserts:**

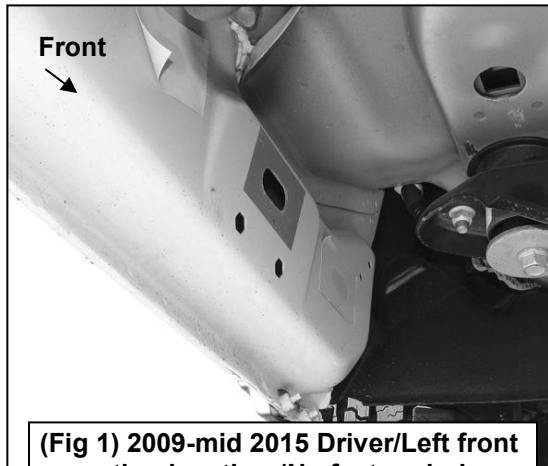
- a. Select (1) M12 Bolt Plate, insert the bolt plate into the upper slot of the vehicle. Use (1) 12mm Plastic Retainer to hold the bolt plate (**Figure 6**).
  - b. Select (1) Mounting Bracket, attach the Mounting Bracket to the vehicle (**Figure 7 & 9**).
4. Move along the side of the body panel to the center and rear mounting location, repeat the appropriate **Step 3** to install the driver side Brackets. **IMPORTANT:** Other (5) Mounting Brackets are universal.
  5. Once all (3) Brackets have been installed, Select a Running Board. Slip (12) M6 T-Bolts into each bottom channel (**Figure 10**). Carefully position the Running Board onto the Mounting Brackets. Attach the Running Board to the Mounting Brackets with (6) M6 T-bolts, (6) M6 flat washers and (6) M6 nylon lock nuts, (**Figure 11**). Do not tighten hardware at this time.
  6. Level and adjust the Running Board and fully tighten all hardware. **NOTE: Torque all M6 nylon lock nuts to 7 lb-ft.**
  7. Repeat **Steps 2—6** for passenger side Mounting Bracket and Running Board installation.
  8. Do periodic inspections to the installation to make sure that all hardware is secure and tight.

**To protect your investment**, wax this product after installing. Regular waxing is recommended to add a protective layer over the finish. Do not use any type of polish or wax that may contain abrasives that could damage the finish.

**For Polished Finishes:** Aluminum polish may be used to polish small scratches and scuffs on the finish. Mild soap may be used also to clean the Running Board.

**For black finishes:** Mild soap may be used to clean the Running Board.

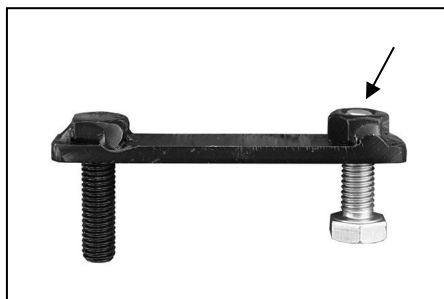
### **Driver/left side Installation Pictured**



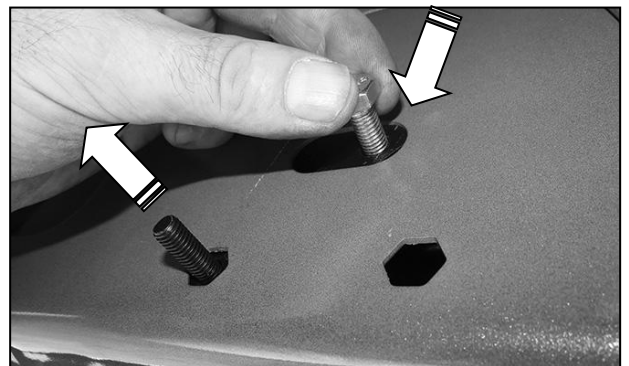
(Fig 1) 2009-mid 2015 Driver/Left front mounting location (No factory holes in pinch weld 2009-2011 models)



(Fig 2) M8 Bolt/Nut Plate, NOTE: M8 Bolt/Nut Plate is not required on models with threaded inserts



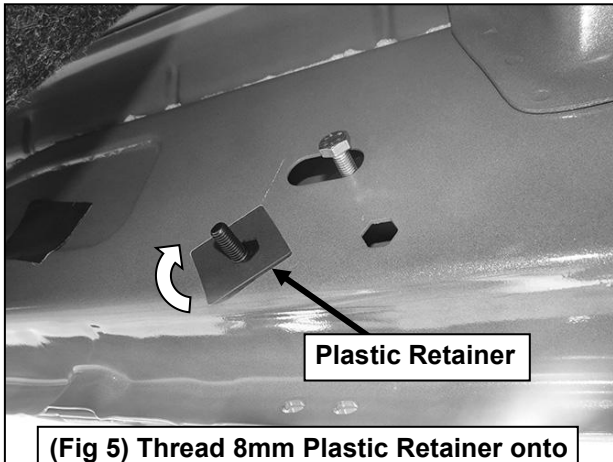
(Fig 3) Thread (1) M8 Hex Bolt into the nut on the plate. Stop when bolt reaches end of nut as pictured



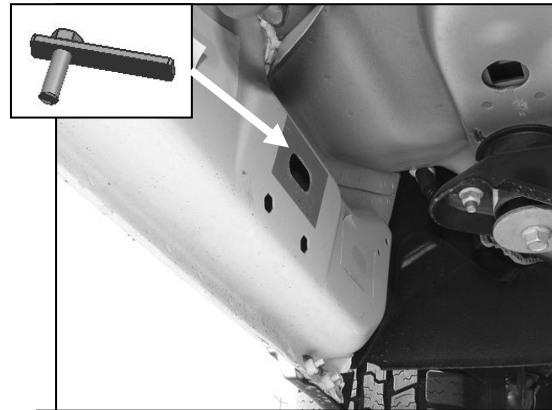
(Fig 4) Use the loose Hex Bolt as a handle. Insert the Bolt Plate into the oval hole and feed the threaded end out either factory hex shaped hole. **IMPORTANT:** Do not let go of the hex bolt until after Plastic Retainer has been threaded onto bolt (Fig 5)

# iRunning Board Installation Instruction

Application: For 2009-2018 Dodge Ram 1500 Crew Cab/ 2010-2018 Dodge Ram 2500/3500/4500/5500 Crew Cab  
 Driver/left side Installation Pictured



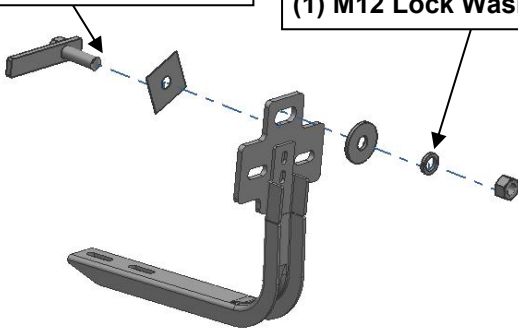
(Fig 5) Thread 8mm Plastic Retainer onto Bolt Plate to hold Nut/Bolt Plate in the lower position, remove the Hex Bolt.



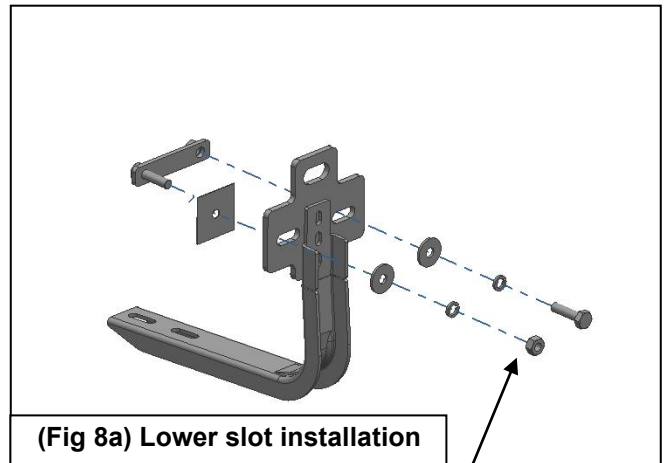
(Fig 6) Thread 12mm Plastic Retainer onto Bolt Plate to hold Bolt Plate in the upper position.

- (1) M12 Bolt Plate
- (1) 12mm Plastic Retainer

- (1) M12 Hex Nut
- (1) M12 Flat Washer
- (1) M12 Lock Washer



(Fig 7) Upper slot installation



(Fig 8a) Lower slot installation



(Fig 8b) Driver Front Mounting Bracket installation

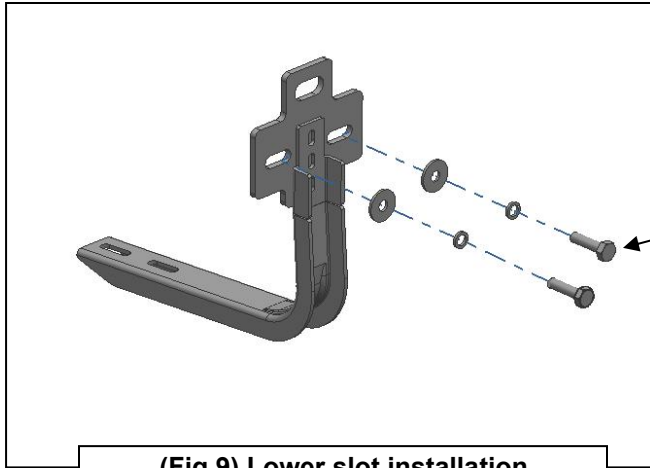
**Model without factory thread holes:**

Attach the Mounting Brackets to the vehicle with:

- (1) M8 Nut/Bolt Plate
- (1) 8mm Plastic Retainers
- (2) M8 Flat Washers
- (2) M8 Lock Washers
- (1) M8 Hex Bolt
- (1) M8 Hex Nuts

# iRunning Board Installation Instruction

Application: For 2009-2018 Dodge Ram 1500 Crew Cab/ 2010-2018 Dodge Ram 2500/3500/4500/5500 Crew Cab  
Driver/left side Installation Pictured



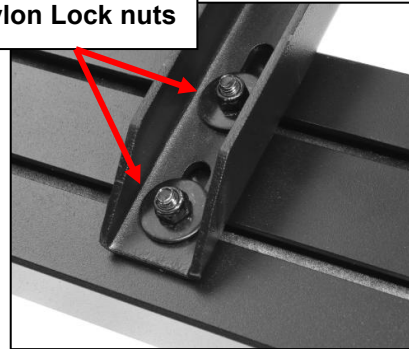
(Fig 9) Lower slot installation

**Model with factory thread holes:**  
Attach the Mounting Brackets to the vehicle with:  
(2) M8 Flat Washers  
(2) M8 Lock Washers  
(2) M8 Hex Bolts



(Fig 10) Slip M6 T-bolts into the bottom channel

(2)M6 T-bolts  
(2)M6 Flat Washers  
(2)M6 Nylon Lock nuts



(Fig 11) Bracket installed



Complete Installation