

(6",5",4")RUNNING BOARD
For 2005-2009 Chevy Equinox

Installation Instructions for IB03EBJ2

by APS Auto Parts Specialist Inc.

Application: For 2005-2009 Chevy Equinox

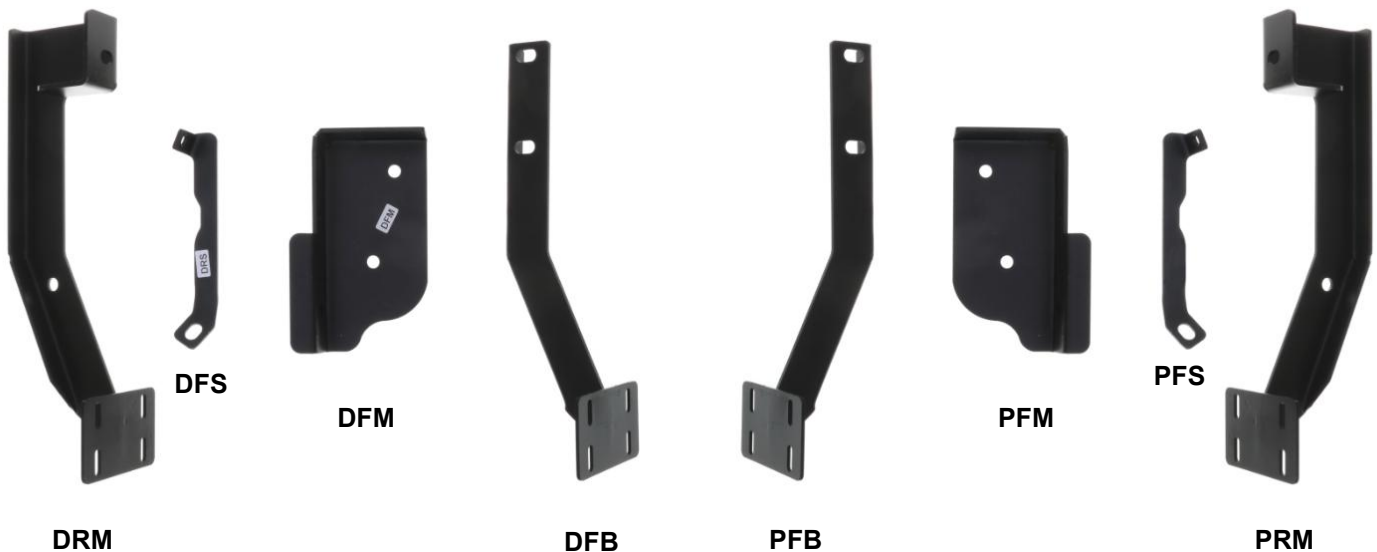
Estimated Time: 1 to 2 hours



Disclaimer: Instructions intended for persons aged 18+ please do not attempt without adult supervision. Instructions are not intended to replace professional installation. Damage from improper installation, misuse or modification to the product voids the manufacturer's warranty.

PARTS LIST:

Item	QTY	Description	Item	QTY	Description
#01	2	Running Board(use for left or right)	#12	12	12mm Hex Nuts
#02	1	Driver Front Mounting Bracket (DFM)	#13	12	12mm Lock Washers
#03	1	Driver Front Support Bracket(DFB)	#14	18	12mm ID x 24mm OD x 2.5mm Flat Washers
#04	1	Passenger Front Mounting Bracket(PFM)	#15	2	10-1.50mm x 30mm Wire Bolt Plates
#05	1	Passenger Front Support Bracket(PFB)	#16	2	10mm Lock Washers
#06	1	Driver Rear Mounting Bracket(DRM)	#17	2	10mm ID x 30mm OD x 2.5mm Flat Washers
#07	1	Passenger Rear Mounting Bracket(PRM)	#18	2	10mm Hex Nuts
#08	1	Driver Rear Support Bracket(DRS)	#19	16	6-1.0mm x 20mm T-Bolts
#09	1	Passenger Rear Support Bracket(PRS)	#20	16	6mm x 22mm OD x 2mm Flat Washers
#10	6	M12 x1.75 - 40mm Bolt Plates (20 x 10mm plate)	#21	16	6mm Lock Nuts
#11	6	12mmx 1.75 - 35mm Hex Head Bolts			



PROCEDURE:

REMOVE CONTENTS FROM BOX. VERIFY ALL PARTS ARE PRESENT. READ FACTORY BODY BOLT REMOVAL INSTRUCTIONS AND INSTALLATION INSTRUCTIONS CAREFULLY BEFORE STARTING INSTALLATION.

1. From underside of vehicle, locate the two factory holes in the lateral floor panel support by the front tires. Insert (1) M12 x 40mm Bolt Plate into each of the factory holes. **IMPORTANT!** Once you have inserted the Bolt Plates, make sure that the welded washer on each Bolt Plate is in the center of the factory hole (**Figure 1**).
2. Locate the driver side front Support Bracket and hang it from already inserted Bolts Plates using the included (2) 12mm Lock Washers, (2) 12mm Flat Washers, and (2) 12mm Hex Nuts. Hand tighten at this time (**Figure 2**). **NOTE: When tightening the Bolt Plates, make sure that they are fully engage at all times.**
3. Partially attach Mounting Bracket to already installed front Support Bracket using the included (2) 12mm x 35mm Hex Head Bolts, (2) 12mm Lock Washers, (4) 12mm Flat Washers, and (4) 12mm Hex Nuts (**Figure 3**).
4. There are two large factory holes by the rear of the floor panel, one in the lateral floor panel support and one in the horizontal floor panel support. Insert (1) M12 x 40mm Bolt Plate into factory hole in the

lateral floor panel support (**Figure 4**). **IMPORTANT!** Once you have inserted the Bolt Plate, make sure that the welded washer on the Bolt Plate is in the center of the factory hole.

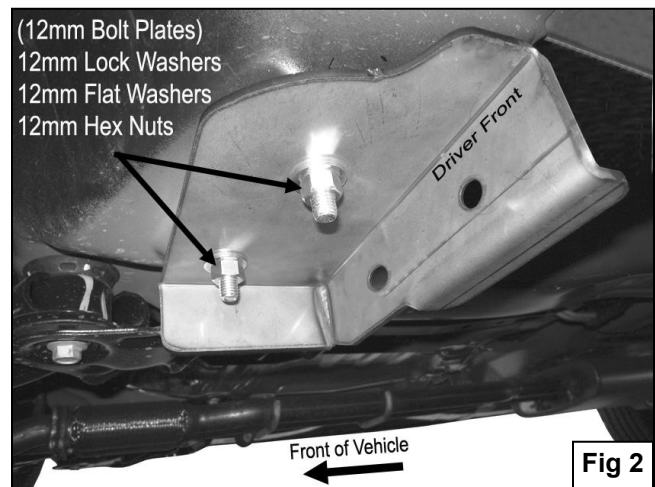
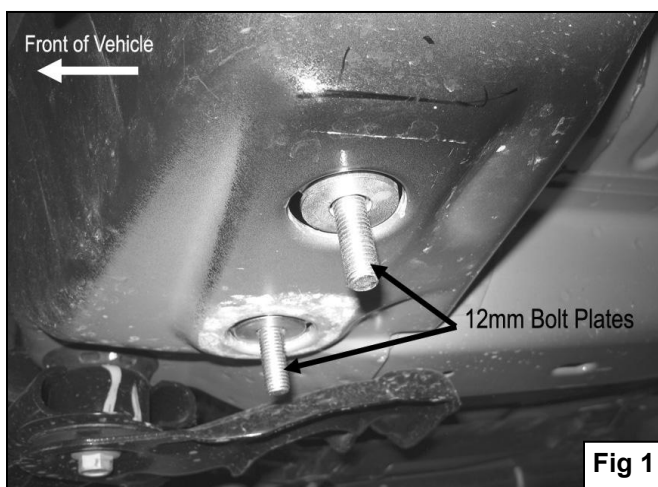
5. Attach rear Mounting Bracket to already inserted Bolt Plate using the included (1) 12mm Hex Nuts,(1) 12mm Flat Washers and (1) 12mm Lock Washer. Hand tighten at this time (**Figure 5**).
NOTE: When tightening the Bolt Plate, make sure is fully engage at all times.
6. To the right side of the Rear Mounting Bracket, there is one oval factory hole and one round factory hole in the floor panel. Insert (1) 10mm x 30mm Wire Bolt Plate through inside oval factory hole so Bolt drops through outside round hole (**Figure 6 & 7**).
7. Attach driver side rear Support Bracket to already inserted Wire Bolt Plate using the included (1) 10mm Lock Washer, (1) 10mm Flat Washer, and (1) 10mm Hex Nut (**Figure 8**). Do not tighten at this time.
8. Attach opposite side of rear Support Bracket to rear Mounting Bracket using the included (1) 12mm x 35mm Hex Head Bolt, (1) 12mm Lock Washer, (2) 12mm Flat Washers, and (1) 12mm Hex Nut (**Figure 8**).
9. Select the Running Board. Slip (8) 6mm T-Bolts into each bottom channel (**Figure 9**).Carefully position the Running Board onto the Mounting Brackets. Attach the Running Board to the Mounting Brackets with (4) 6mm T-bolts, (4)6mm flat washers and (4)6mm lock nuts, (**Figure 10**). Do not tighten hardware at this time.
10. Level and adjust the Running Board and fully tighten all hardware.
11. Repeat **Steps 1—10** for passenger side Running Board installation.
12. Do periodic inspections to the installation to make sure that all hardware is secure and tight.

To protect your investment, wax this product after installing. Regular waxing is recommended to add a protective layer over the finish. Do not use any type of polish or wax that may contain abrasives that could damage the finish.

For Polished Finishes: Aluminum polish may be used to polish small scratches and scuffs on the finish. Mild soap may be used also to clean the Running Board.

For Black Finishes: Mild soap may be used to clean the Running Board.

Driver Side Installation Pictured



(6",5",4")RUNNING BOARD
For 2005-2009 Chevy Equinox

