

PARTS LIST:

Item	QTY	Description	Item	QTY	Description
#01	1	Driver Sidebar	#07	12	M8 Flat Washer
#02	1	Passenger Sidebar	#08	12	M8 Spring Washer
#03	3	Driver Side Mounting Bracket(DFM/DCM/DRM)	#09	12	M6 Nylon Lock Nuts
#04	3	Passenger Side Mounting Bracket(PFM/PCM/PRM)	#10	12	M6 Square Hex Bolt
#05	12	M8 Lock Nut	#11	12	M6 Flat Washer
#06	12	M8 Hex Bolt			

**INSTALLATION INSTRUCTION:**

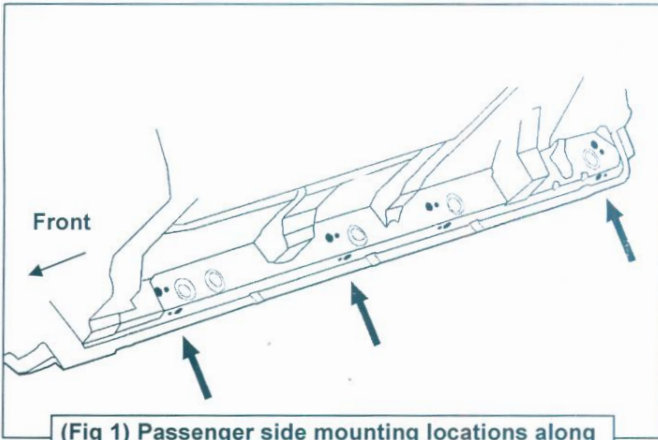
REMOVE CONTENTS FROM BOX. VERIFY ALL PARTS ARE PRESENT. READ INSTRUCTIONS CAREFULLY BEFORE STARTING INSTALLATION.

1. Start the insulation under the passenger side of the vehicle. Locate the 4 factory running board mounting locations along the bottom and inner side of the body, **(Figure 1)**. Mounting Brackets will bolt to the 1st, 2nd and 4th mounting locations. NOTE: It may help to hold a Bracket up in place to help determine the mounting holes to use along the bottom and inner side of the body.
2. Remove rubber plugs as necessary, **(Figure 2)**. Select (1) 8mm Clip Nut. Slide the Clip Nut into the large hole and over the smaller hole next to it. Line up threaded nut on the Clip Nut with smaller hole in body panel, **(Figure 3)**.
3. Select (1) Mounting Bracket. **NOTE:** All (6) Bracket are universal and will fit left or right side. Bolt the Mounting Bracket to the (2) Clip Nut with (2) 8mm Hex Bots, (2) 8mm Lock Washers and (2) 8mm Flat Washers, **(Figure 4)**. Snug but not fully tighten the hardware.
4. Repeat **STEP 1-3** to install the (2) remaining passenger side Brackets.
5. Select the passenger sidebar. Carefully position the Sidebar onto the (3) Mounting Brackets. **IMPORTANT:** Do not slide, (front to back or rotate), the Sidebar on the Brackets or damage to the finish on the Sidebar may result. Attach the Sidebar to the Mounting Brackets with (2) M6 Square Hex Bolt, (2) M6 Nylon Lock Nuts and (2) M6 Flat Washers, **(FIGURE 4)**. Do not tighten hardware.
6. Level and adjust the Sidebar and tighten all hardware.
7. Repeat **STEP 1-6** to install the driver Sidebar.
8. Do periodic inspections to the installation to make sure that all hardware is secure and tight.

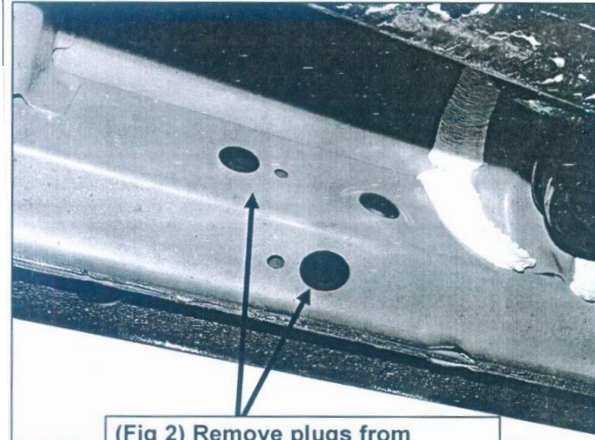
To protect your investment, wax this product after installing. Regular waxing is recommended to add a protective layer over the finish. Do not use any type of polish or wax that may contain abrasives that could damage the finish.

For Polished Finishes: Aluminum polish may be used to polish small scratches and scuffs on the finish. Mild soap may be used also to clean the Running Board.

For black finishes: Mild soap may be used to clean the Running Board.

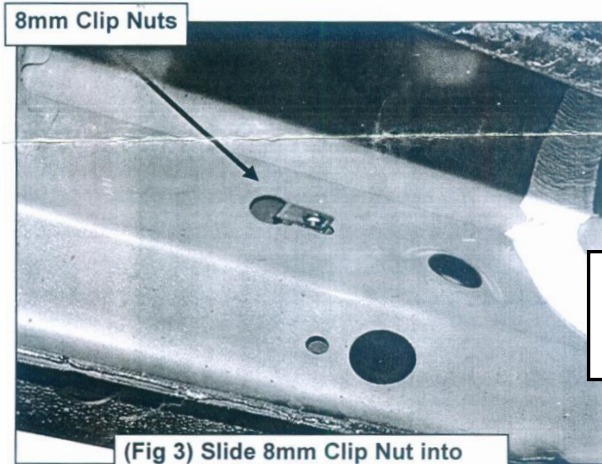


(Fig 1) Passenger side mounting locations along bottom and back of body panel illustrated



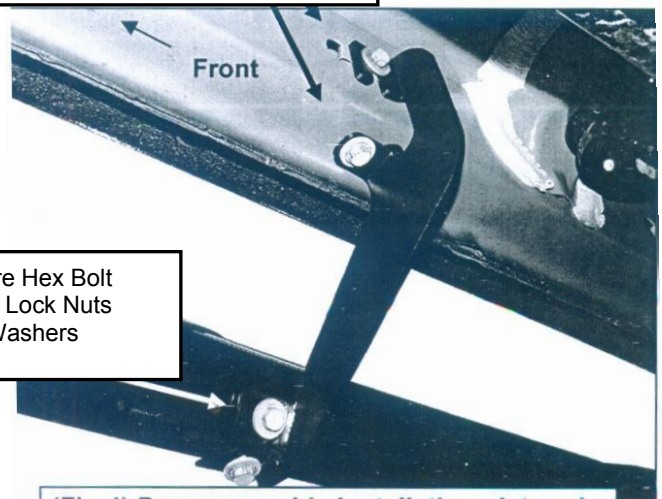
(Fig 2) Remove plugs from mounting locations as necessary

- (2) 8mm x 25mm Hex Bolts
- (2) 8mm Lock Washers
- (2) 8mm Flat Washers

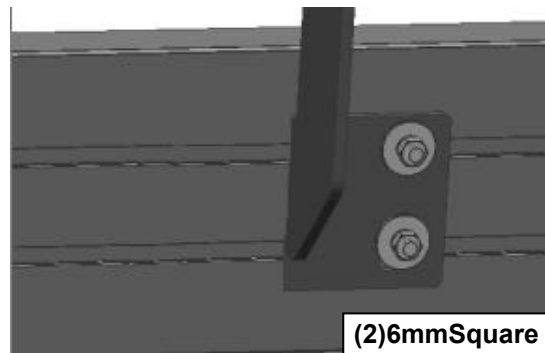


(Fig 3) Slide 8mm Clip Nut into large hole and over small hole

- (2) M6 Square Hex Bolt
- (2) M6 Nylon Lock Nuts
- (2) M6 Flat Washers



(Fig 4) Passenger side installation pictured



- (2) 6mm Square Hex Bolt
- (2) 6mm Flat Washers
- (2) 6mm Lock nuts