

## Installation Instructions for IA20SJI7B by APS Auto Parts Specialist Inc.

Application: For 2007-2019 Toyota Tundra Double Cab

Estimated Time: 1 to 2 hours



The instruction here is for your reference only. We strongly recommend the professional installer for best result. We are not responsible for any damage caused by the installation. Thank you for choosing our product!

**PARTS LIST:**

Item	QTY	Description	Item	QTY	Description
#1	2	Driver/Passenger Side Bar	#8	16	M8X1.25-30 Hex Bolts (Full thread)
#2	1	Driver/Left Front Mounting Bracket (DFM)	#9	16	M8 Flat Washers
#3	1	Passenger/Right Front Mounting Bracket (PFM)	#10	16	M8 Lock Washers
#4	2	Driver/Passenger Center Mounting Bracket (DCM/PCM)	#11	16	M10X1.5-75 Carriage Bolts
#5	2	Driver/Passenger Center Mounting Bracket (DCM1/PCM1)	#12	16	M10 Flat Washers
#6	2	Driver/Passenger Rear Mounting Bracket (DRM/PRM)	#13	16	M10 Lock Washers
#7	8	2-Hole Support Bracket	#14	16	M10 Hex Nuts



DFM



PFM



DCM/PCM



DCM1/PCM1



DRM/PRM



2-Hole Support Bracket

**PROCEDURE:**

1. Remove contents from the box and check for damages. Verify all parts are present. It is strongly recommended to read and to understand the instruction before installation.
2. Determine front, front center, rear center and rear brackets. Rear/center bracket has one identification hole and rear bracket has two identification holes (**Figure 1**).
3. Attach driver side brackets to underside of body panel using two M8x 30mm hex head bolts, M8 flat washers, and M8 lock washers per bracket. Hand tighten (**Figure 1**).
4. Select the Driver Side Bar. Slip (2) M10X1.5-75 Carriage Bolts into each 2-Hole Support Brackets, and insert the 2-Hole support bracket into the Driver Side Bar (**Figure 2**). Carefully position the Bar onto the (4) Mounting Brackets.  
**IMPORTANT:** Do not slide the Bar on the Brackets or it might cause damages to the iArmors. Attach the Driver Side Bar to the Mounting Brackets with (2) M10 Hex Nuts,(2)10mm lock washers and (2)10mm flat washers, (**Figure 3**). Do not tighten hardware yet.
5. Level and adjust the Bar properly and tighten all hardware. **NOTE: Torque all M10 X1.5-75 Carriage Bolts to 22~25 lb-ft. Don't over tighten, or the aluminum square bars will be damaged by the brackets.**
6. Repeat Step 2-5 for the other side for installation.
7. Installation completed (**Figure 4**).
8. Do periodic inspections to the installation to make sure that all hardware is secure and tight.

Products have a high quality finish that must be cared for like any other exposed finish on the vehicle. Protect the finish with a non-abrasive automotive wax, (e.g. Pure Carnauba) on a regular basis. The use of any soap, polish or wax that contains an abrasive is detrimental, as the compounds scratch the finish and open it to corrosion.

### Driver Side Installation Pictured

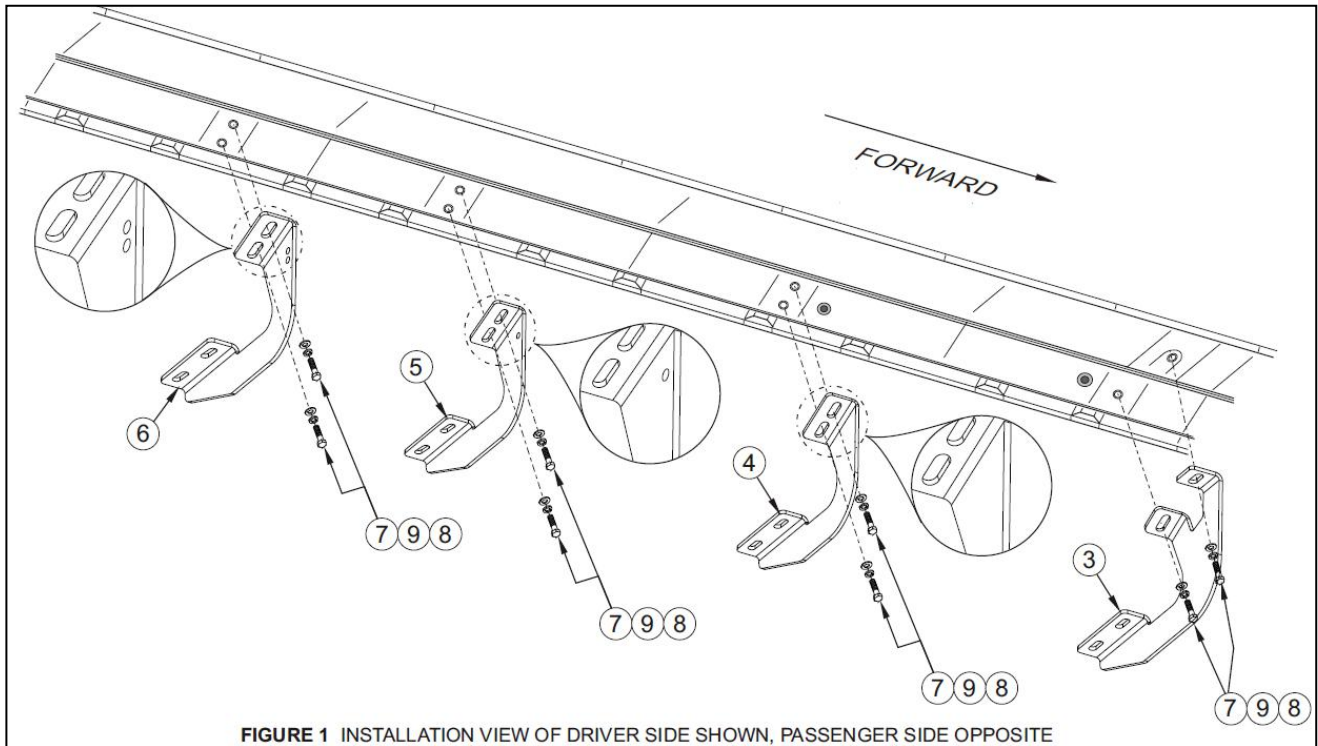


FIGURE 1 INSTALLATION VIEW OF DRIVER SIDE SHOWN, PASSENGER SIDE OPPOSITE

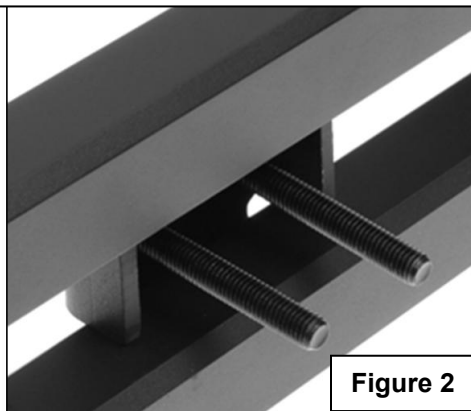


Figure 2

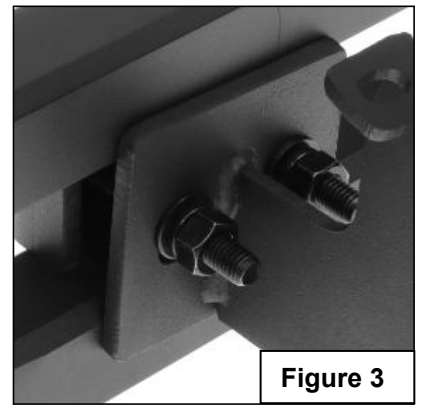


Figure 3



Figure 4

[View other running boards and step bars made by APG on our website.](#)