

Installation Instructions for IA20SJE6B

by APS Auto Parts Specialist Inc.

Application: For 2005-2019 Toyota Tacoma Extended /Access Cab

Estimated Time: 1 to 2 hours

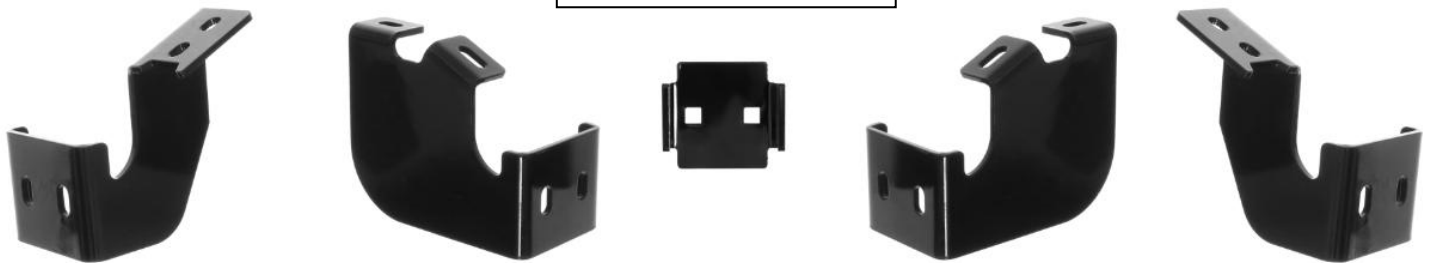


The instruction here is for your reference only. We strongly recommend the professional installer for best result. We are not responsible for any damage caused by the installation. Thank you for choosing our product!

PARTS LIST:

Item	QTY	Description	Item	QTY	Description
#1	2	Driver/ Passenger Side Bar	#8	12	M10X1.5-75 Carriage Bolts
#2	1	Driver Front Mounting Bracket (DFM)	#9	12	M8 Flat Washer
#3	1	Passenger Front Mounting Bracket (PFM)	#10	12	M8 Lock Washer
#4	2	Driver Center Mounting Bracket (DCM/DRM)	#11	12	M10 Flat Washer
#5	2	Passenger Center Mounting Bracket (PCM/PRM)	#12	12	M10 Lock Washer
#6	6	2-Hole Support Bracket	#13	12	M10X1.5 Hex Nuts
#7	12	M8x1.25 - 25 Hex Bolts			

2-Hole Support Bracket



DCM/DRM

DFM

PFM

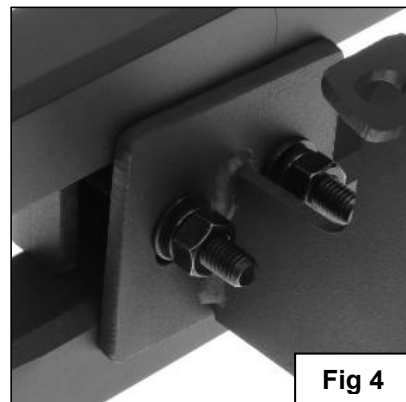
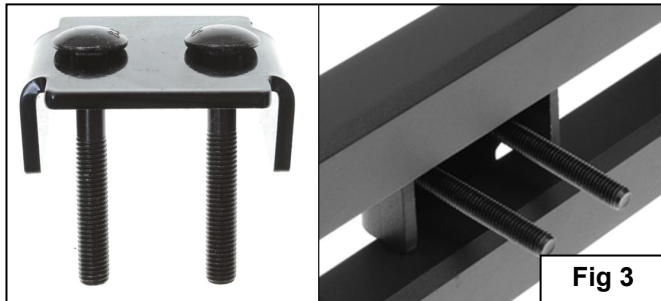
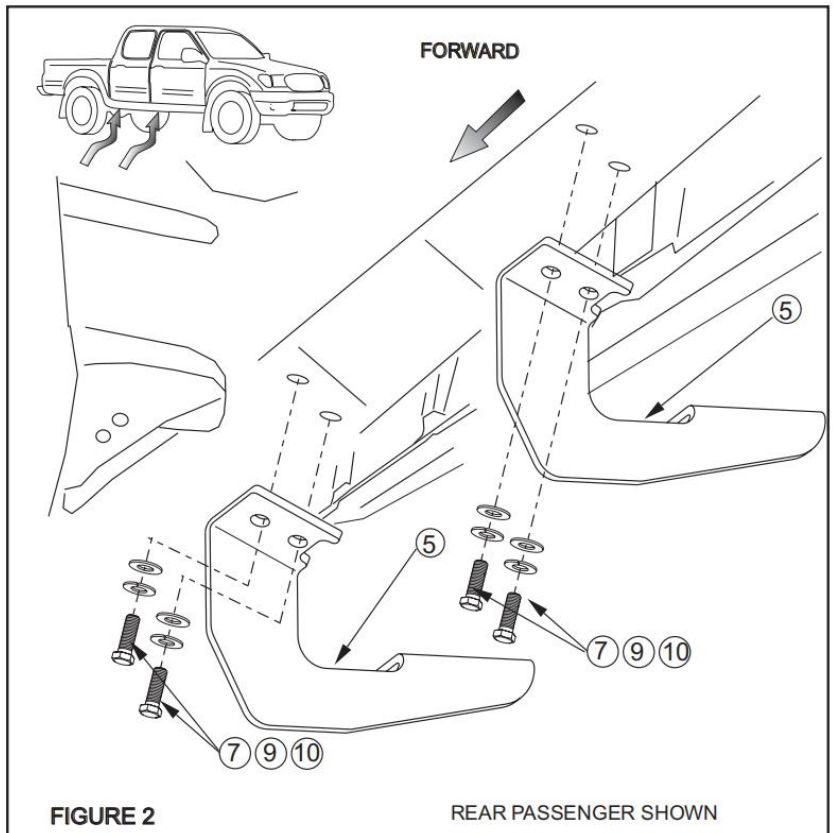
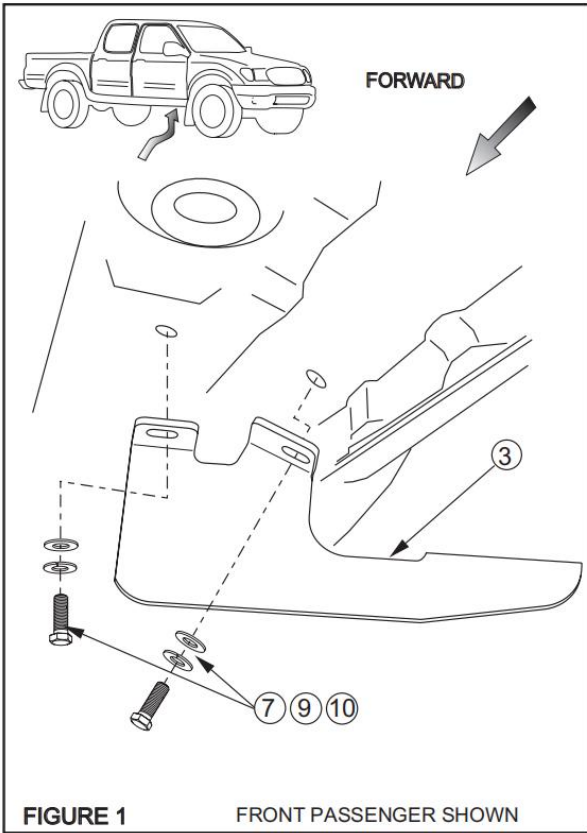
PCM/PRM

PROCEDURE:

1. Remove contents from box and check for damage. Verify all parts are present. Read and understand instructions before beginning.
NOTE: We does not recommend using closure strip for this application.
2. Attach mounting brackets as shown. Hand tighten (**See Figure 1 and 2**).
3. Select the Driver Side Bar. Slip (2) M10X1.5-75 Carriage Bolts into each 2-Hole Support Brackets ,and insert the 2-Hole support bracket into the Driver Side Bar.(**Fig 3**). Carefully position the Bar onto the (3) Mounting Brackets. **IMPORTANT:** Do not slide the Bar on the Brackets or damage to the finish may result. Attach the Driver Side Bar to the Mounting Brackets with (2) M10 Hex Nuts,(2)M10 lock washers and (2)M10 flat washers, (**Fig 4**). Do not tighten hardware.
4. Level and adjust the Bar properly and tighten all hardware. **NOTE: Torque all M10 X1.5-75 Carriage Bolts to 22~25 lb-ft. Don't over tighten,or the aluminum square bars will be damaged by the brackets.**
5. Repeat Step 2-4 for the other side installation.
6. Installation completed!!! (**See Fig 5**)
7. Do periodic inspections to the installation to make sure that all hardware is secure and tight.

Products have a high quality finish that must be cared for like any other exposed finish on the vehicle. Protect the finish with a non-abrasive automotive wax, (e.g.Pure Carnauba) on a regular basis. The use of any soap, polish or wax that contains an abrasive is detrimental, as the compounds scratch the finish and open it to corrosion.

Driver/Passenger Side Installation Pictured



[View other running boards and step bars made by APG on our website.](#)