



For 2010-2016 Toyota 4Runner Trail Edition/2017-2019 Toyota 4Runner TRD Off-Road/  
2014-2019 4Runner SR5/(Excl. TRD Pro or Models with Lower Rocker Panel Extensions)

## **Installation Instructions for IA20SBH0B** by APS Auto Parts Specialist Inc.

**Application: FOR 2010-2016 Toyota 4Runner Trail Edition/  
2017-2019 Toyota 4Runner TRD Off-Road/  
2014-2019 4Runner SR5/(Excl. TRD Pro or Models with Lower Rocker  
Panel Extensions)  
Estimated Time: 1 to 2 hours**

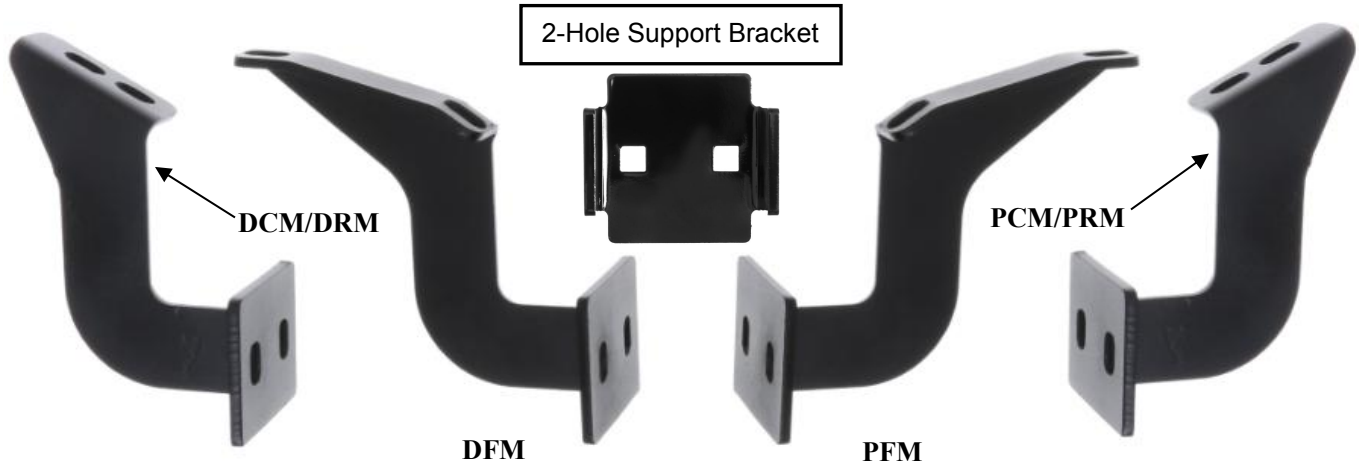


The instruction here is for your reference only. We strongly recommend the professional installer for best result. We are not responsible for any damage caused by the installation. Thank you for choosing our product!

For 2010-2016 Toyota 4Runner Trail Edition/2017-2019 Toyota 4Runner TRD Off-Road/  
2014-2019 4Runner SR5/(Excl. TRD Pro or Models with Lower Rocker Panel Extensions)

**PARTS LIST:**

Item	QTY	Description	Item	QTY	Description
#1	2	Driver/Passenger Side Bar	#8	12	M8 Flat Washers
#2	1	Driver Front Mounting Bracket (DFM)	#9	12	M8 Lock Washers
#3	1	Passenger Front Mounting Bracket (PFM)	#10	12	M10X1.5-75 Carriage Bolts
#4	2	Driver Center & Rear Mounting Bracket (DCM/DRM)	#11	12	M10 Flat Washers
#5	2	Passenger Center & Rear Mounting Bracket (PCM/PRM)	#12	12	M10 Lock Washers
#6	6	2-Hole Support Bracket	#13	12	M10 Hex Nuts
#7	12	M8X1.25-30 Hex Bolts			



**PROCEDURE:**

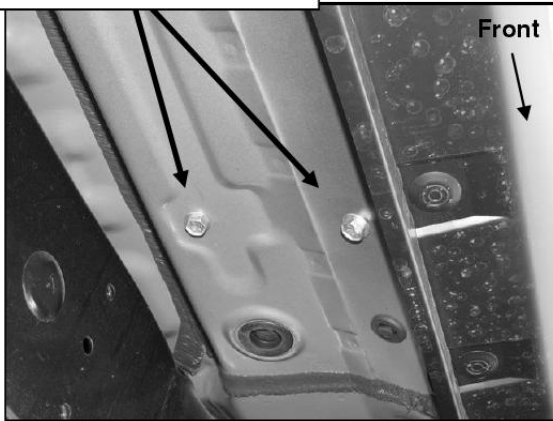
1. REMOVE CONTENTS FROM BOX. VERIFY ALL PARTS ARE PRESENT. READ INSTRUCTIONS CAREFULLY BEFORE STARTING INSTALLATION. PLEASE NOTE: 200LBS IS THE MAXIMUM RATED LOAD FOR THE iArmor.
2. Start installation on the passenger side of the vehicle, remove the existing (2) factory bolts located by the front tire opening securing the factory rocker panel bracket to the vehicle, (Figure 1). Select (1) Front Mounting Bracket. Hold the Front Bracket over the rocker panel bracket and line up the (2) mounting holes. Secure the brackets to the vehicle using the included longer (2) M8x30mm HEX Bolts, (2) M8 Lock Washers and (2) M8 Flat Washers, (Figure 2). Do not tighten hardware at this time.
3. The center and rear brackets are identical. Select (1) Center & Rear Bracket and repeat the procedure as described in **Step 2** to install it in the center mounting location, (Figure 3&4). **NOTE:** Install (1) mounting bracket at a time. Do not tighten hardware at this time.
4. Select the Passenger Side Bar. Slip (2) M10X1.5-75 Carriage Bolts into each 2-Hole Support Brackets, and insert the 2-Hole support bracket into the Driver Side Bar. (Figure 5). Carefully position the Bar onto the (4) Mounting Brackets. **IMPORTANT:** Do not slide the Bar on the Brackets or damage to the finish may result. Attach the Passenger Side Bar to the Mounting Brackets with (2) M10 Hex Nuts, (2) M10 lock washers and (2) M10 flat washers, (Figure 6). Do not tighten hardware. **IMPORTANT:** Depending on year/model, it may be necessary to remove the plastic deflector from in front of the rear tire opening, (Figure 3)
5. Level and adjust the Bar properly and tighten all hardware. **NOTE: Torque all M10 X1.5-75 Carriage Bolts to 22~25 lb-ft. Don't over tighten, or the aluminum square bars will be damaged by the brackets.**
6. Repeat Step 2-5 for the other side installation.
7. Installation completed!!! (See Figure 7)
8. Do periodic inspections to the installation to make sure that all hardware is secure and tight.

For 2010-2016 Toyota 4Runner Trail Edition/2017-2019 Toyota 4Runner TRD Off-Road/  
2014-2019 4Runner SR5/(Excl. TRD Pro or Models with Lower Rocker Panel Extensions)

Products have a high quality finish that must be cared for like any other exposed finish on the vehicle. Protect the finish with a non-abrasive automotive wax, (e.g. Pure Carnauba ) on a regular basis. The use of any soap, polish or wax that contains an abrasive is detrimental, as the compounds scratch the finish and open it to corrosion.

### Passenger Side Installation Pictured

Remove factory hex bolts



(Fig 1) Passenger side front mount pictured

(2) 8mm x 30mm Hex Bolts  
(2) 8mm Flat Washers  
(2) 8mm Lock Washers

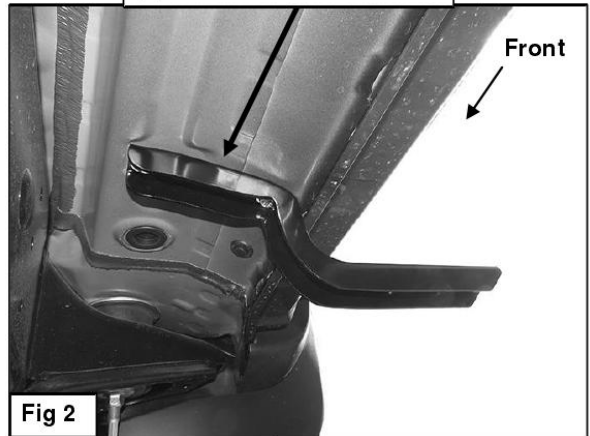


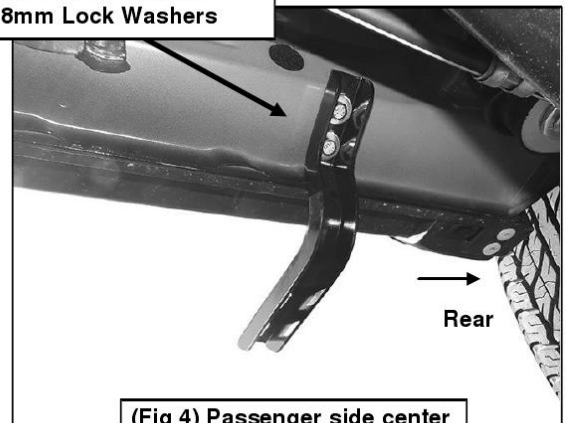
Fig 2

Plastic deflector



(Fig 3) Passenger side rear bracket location pictured

(2) 8mm x 30mm Hex Bolts  
(2) 8mm Flat Washers  
(2) 8mm Lock Washers



(Fig 4) Passenger side center and rear brackets pictured

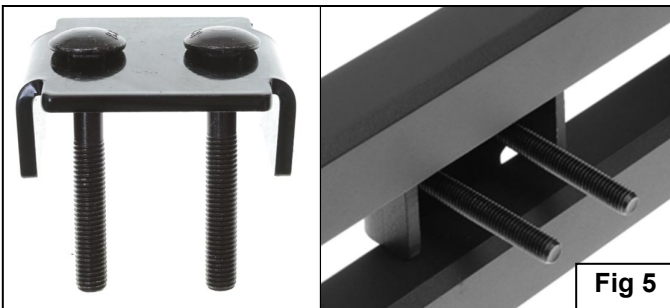


Fig 5

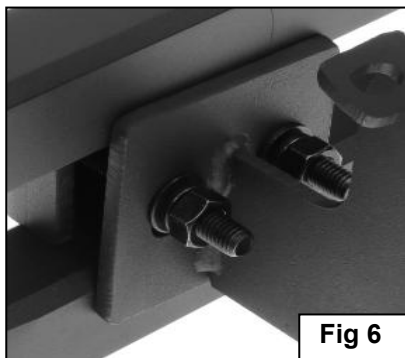


Fig 6



Complete Installation

Fig 7