



For 2005-2019 Nissan Frontier Crew Cab

Installation Instructions for IA14SJI5B by APS Auto Parts Specialist Inc.

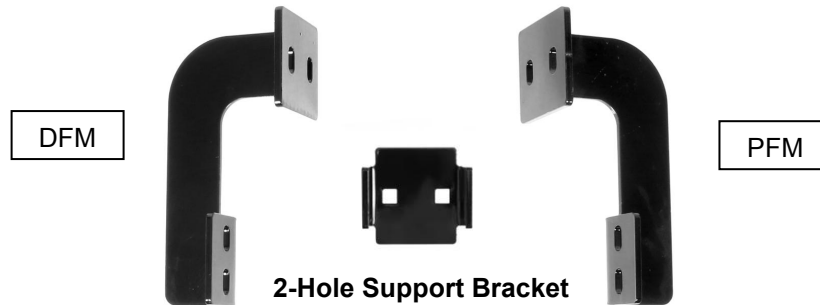
Application: For 2005-2019 Nissan Frontier Crew Cab
Estimated Time: 1 to 2 hours



The instruction here is for your reference only. We strongly recommend the professional installer for best result. We are not responsible for any damage caused by the installation. Thank you for choosing our product!

PARTS LIST:

Item	QTY	Description	Item	QTY	Description
#1	2	Driver/ Passenger Side Bar	#6	12	M8X1.25 Hex Flange Nuts
#2	3	Driver Front Mounting Bracket (DFM)	#7	12	M10X1.5-75 Carriage Bolts
#3	3	Passenger Front Mounting Bracket (PFM)	#8	12	M10 Flat Washer
#4	6	2-Hole Support Bracket	#9	12	M10 Lock Washers
#5	12	M10 Flat Washers	#10	12	M10 Hex Nuts

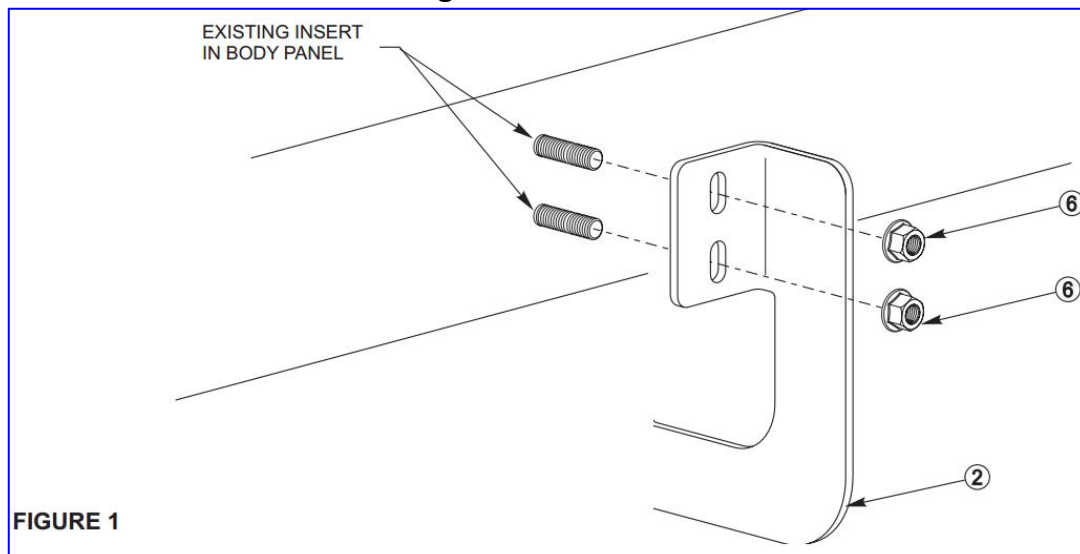


PROCEDURE:

1. Remove contents from box and check for damage. Verify all parts are present. Read instructions completely before beginning.
2. Attach mounting brackets as shown **SEE FIGURE 1**.
3. Select the Driver Side Bar. Slip (2) M10X1.5-75 Carriage Bolts into each 2-Hole Support Brackets, and insert the 2-Hole support bracket into the Driver Side Bar (**Fig 2**). Carefully position the Bar onto the (3) Mounting Brackets. **IMPORTANT:** Do not slide the Bar on the Brackets or damage to the finish may result. Attach the Driver Side Bar to the Mounting Brackets with (2) M10 Hex Nuts, (2) M10 lock washers and (2) M10 flat washers, (**Fig 3**). Do not tighten hardware.
4. Level and adjust the Bar properly and tighten all hardware. **NOTE: Torque all M10 X1.5 Hex Nuts to 22~25 lb-ft. Don't over tighten, or the aluminum square bars will be damaged by the brackets.**
5. Repeat Step 2-4 for the other side installation. Installation completed!!! (**Fig 4**)
6. Do periodic inspections to the installation to make sure that all hardware is secure and tight.

Products have a high quality finish that must be cared for like any other exposed finish on the vehicle. Protect the finish with a non-abrasive automotive wax, (e.g. Pure Carnauba) on a regular basis. The use of any soap, polish or wax that contains an abrasive is detrimental, as the compounds scratch the finish and open it to corrosion.

Driver/Passenger Side Installation Pictured



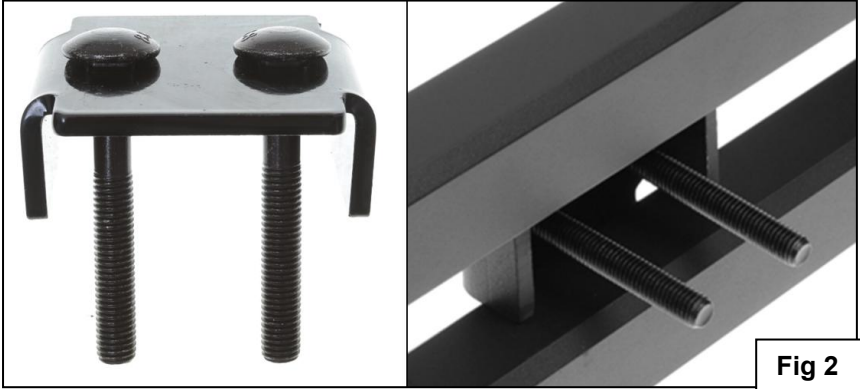


Fig 2

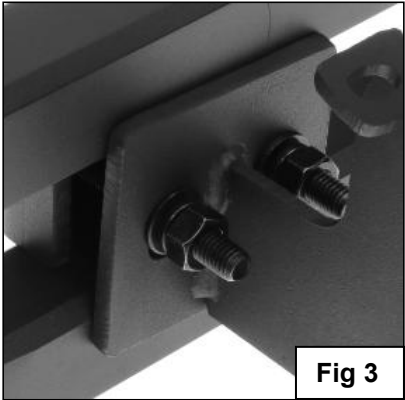


Fig 3



Complete Installation

Fig 4