

Installation Instructions

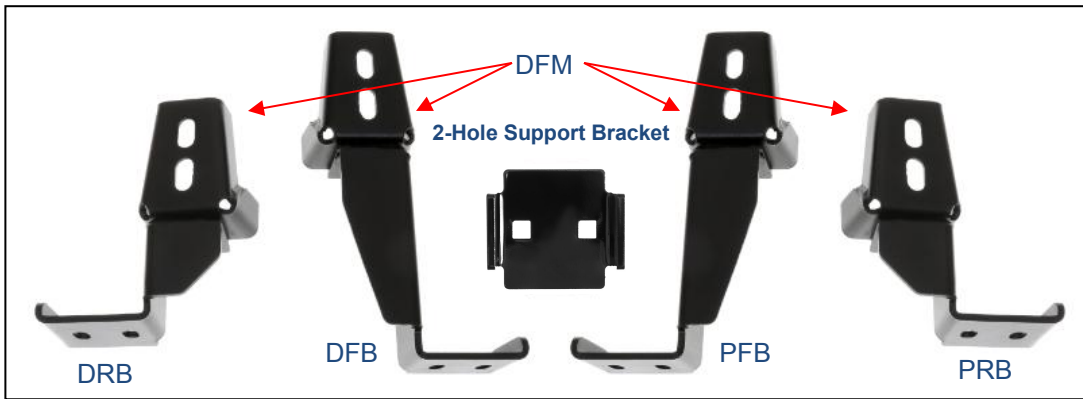
Part#: IA10SJH4B

Application: For 1987-2006 Jeep Wrangler TJ/YJ

NOTE:	<ul style="list-style-type: none"> • REMOVE CONTENTS FROM BOX. • VERIFY ALL PARTS ARE PRESENT. • READ INSTRUCTIONS CAREFULLY BEFORE STARTING INSULATION. • REMOVE OE SIDESTEP/ROCK RAIL BEFORE INSTALL. • ASSISTANCE IS RECOMMENDED.
--------------	---

Package Check List

Item	QTY	Description	Item	QTY	Description
#1	2	Driver/ Passenger Side Bar	#9	8	M12 Flat Washers
#2	4	Connecting Plate(PFM)	#10	4	M12 Lock Washers
#3	1	Driver Front Mounting Bracket (DFB)	#11	4	M12 Hex Nuts
#4	1	Passenger Front Mounting Brackets (PFB)	#12	8	M10X1.5-75 Carriage Bolts
#5	1	Driver Rear Mounting Bracket (DRB)	#13	8	M10 Lock Washers
#6	1	Passenger Rear Mounting Brackets (PRB)	#14	8	M10 Flat Washers
#7	4	2-Hole Support Bracket	#15	8	M10 Hex Nuts
#8	4	M12X1.75-35 Hex Bolts (Full thread)			



PROCEDURE:

1. REMOVE CONTENTS FROM BOX. VERIFY ALL PARTS ARE PRESENT. READ INSTRUCTIONS CAREFULLY. FACTORY INSTALLED OR AFTERMARKET "ROCK RAILS," SIDE STEPS OR RUNNING BOARDS MUST BE REMOVED.
2. Start installation toward the front of the driver side of the vehicle. Remove the factory body mount bolt(Figures 1). Select (1) Frame Mounting Bracket. Insert the factory body mount bolt through the appropriate slot, the rubber bushing and back into the vehicle. **NOTE:** Do not remove the rubber bushing. The Mounting Bracket will install over the rubber bushing. **IMPORTANT:** The Brackets are equipped with (2) mounting slots. Determine correct model year for proper installation(Figures 2-3):
 - a) **1987 - 1995 Vehicles:** Use the inner slot. Do not tighten hardware at this time.

Installation Instructions

Part#: IA10SJH4B

Application: For 1987-2006 Jeep Wrangler TJ/YJ

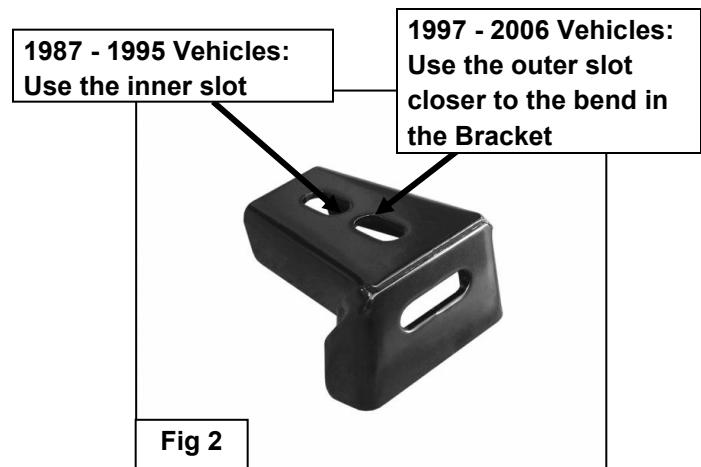
- b) **1997 - 2006 Vehicles:** Use the outer slot closer to the bend in the Bracket. Do not tighten hardware at this time.
3. Select the driver front bracket, attach to the frame mounting bracket with (1)12mmx35 Hex bolt,(2)12mm flat washers,(1)12mm lock washer and (1)12mm hex nut(**Figures 4**).
 4. Repeat Step 2-3 for rear Mounting Bracket installation.
 5. Select the Driver Side Bar. Slip (2) M10X1.5-75 Carriage Bolts into each 2-Hole Support Brackets ,and insert the 2-Hole support bracket into the Driver Side Bar.(**Fig 5**). Carefully position the Bar onto the (4) Mounting Brackets. **IMPORTANT:** Do not slide the Bar on the Brackets or damage to the finish may result. Attach the Driver Side Bar to the Mounting Brackets with (2) M10 Hex Nuts,(2)10mm lock washers and (2)10mm flat washers, (**Fig 6**). Do not tighten hardware.
 6. Level and adjust the Bar properly and tighten all hardware. **NOTE: Torque all M10 X1.5-75 Carriage Bolts to 22~25 lb-ft. Don't over tighten,or the aluminum square bars will be damaged by the brackets.**
 7. Repeat Step 2-6 for the other side installation. Installation completed!!! (**See Fig 7**)
 8. Do periodic inspections to the installation to make sure that all hardware is secure and tight.

Products have a high quality finish that must be cared for like any other exposed finish on the vehicle. Protect the finish with a non-abrasive automotive wax, (e.g.Pure Carnauba) on a regular basis. The use of any soap, polish or wax that contains an abrasive is detrimental, as the compounds scratch the finish and open it to corrosion.

Driver/Passenger Side Installation Pictured



(Fig 1) Remove factory body mount bolt

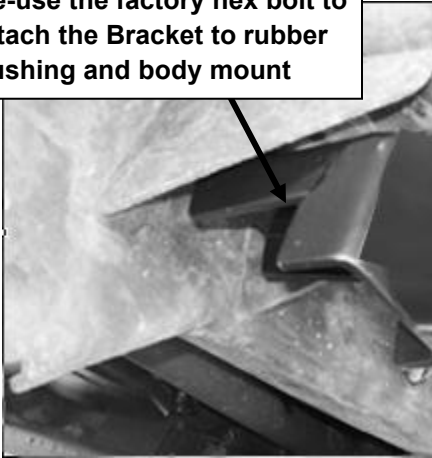


Installation Instructions

Part#: IA10SJH4B

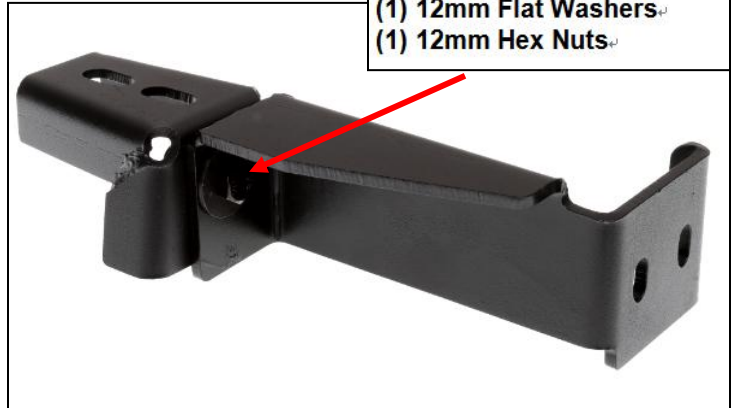
Application: For 1987-2006 Jeep Wrangler TJ/YJ

Re-use the factory hex bolt to attach the Bracket to rubber bushing and body mount



(Fig 3) Frame Bracket installation pictured

- (1) 12mm x 35mm Hex Bolts
- (2) 12mm Lock Washers
- (1) 12mm Flat Washers
- (1) 12mm Hex Nuts



(Fig 4) Driver Front Bracket installation pictured

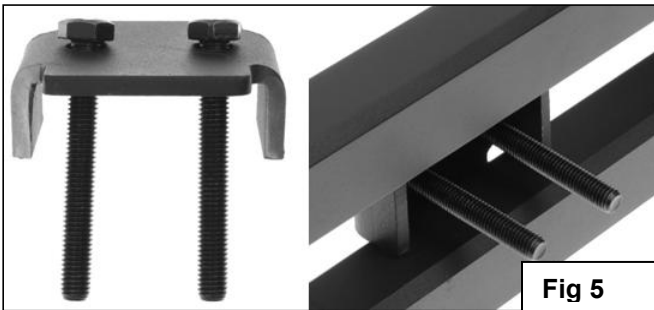


Fig 5

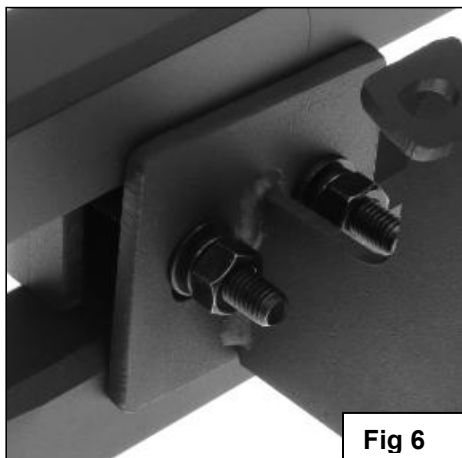
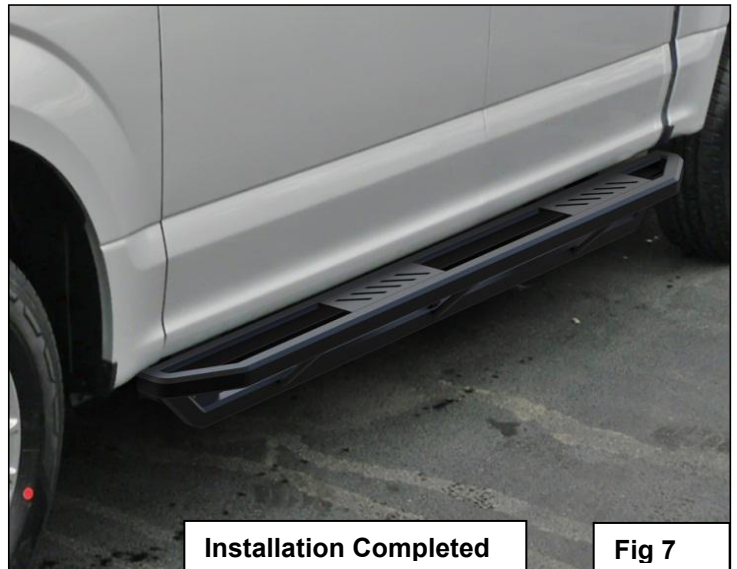


Fig 6



Installation Completed

Fig 7