

Installation Instructions

Part#: IA10SBA9B

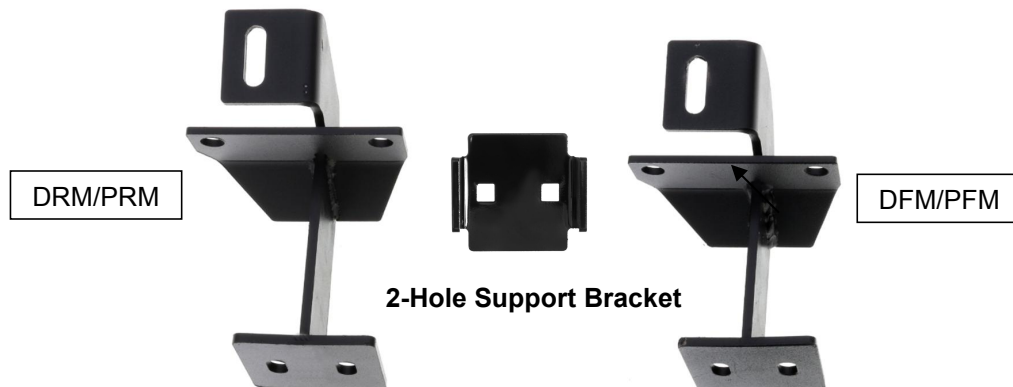
Application: For 2008-2013 JEEP LIBERTY

NOTE:

- REMOVE CONTENTS FROM BOX.
- VERIFY ALL PARTS ARE PRESENT.
- READ INSTRUCTIONS CAREFULLY BEFORE STARTING INSULATION.
- REMOVE OE SIDESTEP/ROCK RAIL BEFORE INSTALL.
- ASSISTANCE IS RECOMMENDED.

Package Check List

Item	QTY	Description	Item	QTY	Description
#1	2	Driver/ Passenger Side Bar	#9	8	M8 Nylon Lock Nuts
#2	2	Driver Front Mounting Bracket (DFM/PFM)	#10	4	M10 Flat Washers
#3	2	Driver Rear Mounting Brackets (DRM/PRM)	#11	4	M10 Nylon Lock Nuts
#4	4	2-Hole Support Bracket	#12	8	M10X1.5-75 Carriage Bolts
#5	6	Fit Adjustment Spacers	#13	8	M10 Flat Washers
#6	4	M10x 25mm Bolt Plates	#14	8	M10 Lock Washers
#7	8	M8 x 35mm Long Hex Bolts	#15	8	M10 Hex Nuts
#8	16	M8 Flat Washers			



PROCEDURE:

1. REMOVE CONTENTS FROM BOX. VERIFY ALL PARTS ARE PRESENT. READ INSTALLATION INSTRUCTIONS CAREFULLY BEFORE STARTING INSTALLATION. DRILLING IS REQUIRED.
2. Start installation at the front, passenger side of the vehicle. Insert (1) M10 x 25mm Bolt Plate into the rectangular hole and out the round hole in the bottom of the side panel, **(Fig 1A & 1B)**.
3. Hold a front Bracket in place on the outside of the pinch weld and over the Bolt Plate, **(Fig 2A)**. Attach the Mounting Bracket to the Bolt Plate with the included (1) M10 Flat Washer and (1) M10 Nylon Lock Nut, **(Fig 2B)**. Leave loose at this time. NOTE: Make sure that the mounting tab on the Bracket is on the outside of the pinch weld. IMPORTANT: The front Brackets are different from the rear Brackets, **(Fig 2A)**. Use the instructions to correctly identify the Brackets.
4. Line up the (2) holes in the Bracket with the factory holes in the pinch weld. Attach the Bracket to the pinch weld using the included longer (2) M8 x 35mm Hex Bolts, (4) M8 Flat Washers and (2) M8 Nylon Lock Nuts, **(Fig 2B)**. Do not tighten at this time.

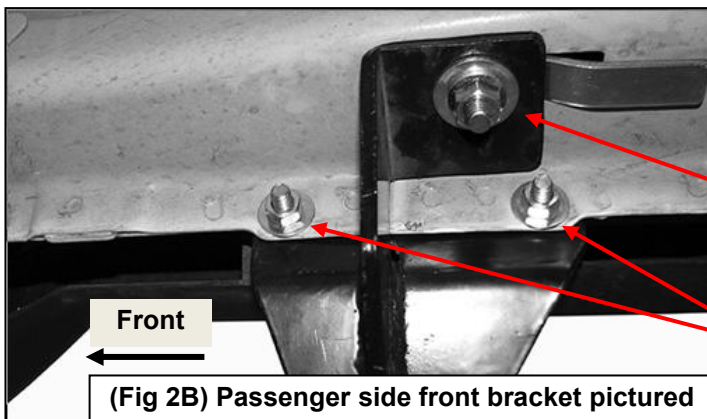
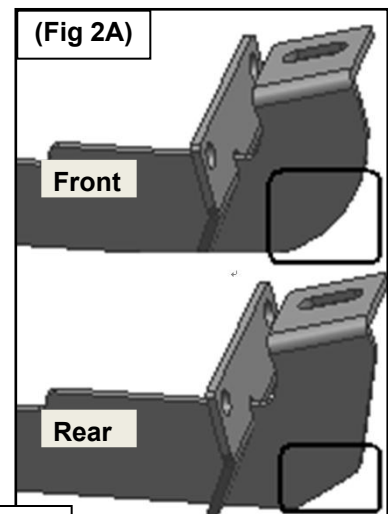
Installation Instructions

Part#: IA10SBA9B

Application: For 2008-2013 JEEP LIBERTY

5. Repeat Steps 2—4 to install the passenger side rear Bracket(**Fig 3**).
6. Repeat Steps 2—5 for front and rear driver Running Board Bracket installation.
7. Select the Driver Side Bar. Slip (2) M10X1.5-75 Carriage Bolts into each 2-Hole Support Brackets ,and insert the 2-Hole support bracket into the Driver Side Bar.(**Fig 5**). Carefully position the Bar onto the (4) Mounting Brackets. **IMPORTANT:** Do not slide the Bar on the Brackets or damage to the finish may result. Attach the Driver Side Bar to the Mounting Brackets with (2) M10 Hex Nuts,(2)10mm lock washers and (2)10mm flat washers, (**Fig 6**). Do not tighten hardware.
8. Level and adjust the Bar properly and tighten all hardware. **NOTE:** Depending on the vehicle, model and year, the front of the running board may by close to or make contact with front factory flares. If necessary, insert 1 to 3 of the Fit Adjustment Spacers between the Bracket and the outside of the pinch weld as needed to adjust the fit of the Sidebar, (**Fig 4**). Once properly adjusted, fully tighten all hardware. **NOTE: Torque all M10 X1.5-75 Carriage Bolts to 22~25 lb-ft. Don't over tighten,or the aluminum square bars will be damaged by the brackets.**
9. Repeat Step 2-6 for the other side installation. Installation completed!!! (**Fig 7**)
10. Do periodic inspections to the installation to make sure that all hardware is secure and tight. Products have a high quality finish that must be cared for like any other exposed finish on the vehicle. Protect the finish with a non-abrasive automotive wax, (e.g.Pure Carnauba) on a regular basis. The use of any soap, polish or wax that contains an abrasive is detrimental, as the compounds scratch the finish and open it to corrosion.

Driver/Passenger Side Installation Pictured



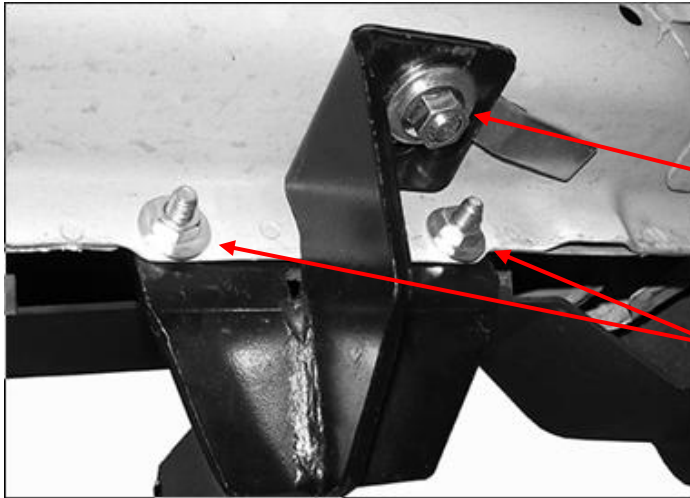
M10 Flat Washer
M10 Nylon Lock Nut

(2)M 8 x 35mm Hex Bolts
(4) M8 Flat Washers
(2) M8 Nylon Lock Nuts

Installation Instructions

Part#: IA10SBA9B

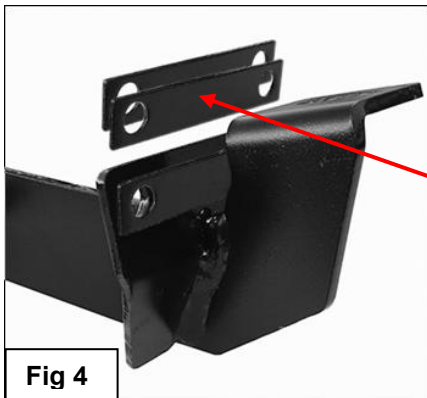
Application: For 2008-2013 JEEP LIBERTY



M10 Flat Washer
M10 Nylon Lock Nut

(2) M 8 x 35mm Hex Bolts
(4) M8 Flat Washers
(2) M8 Nylon Lock Nuts

(Fig 3) Passenger side rear bracket pictured



Fit Adjustment
Spacers

Fig 4

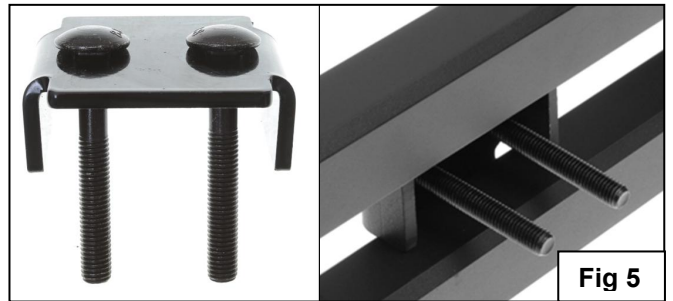


Fig 5

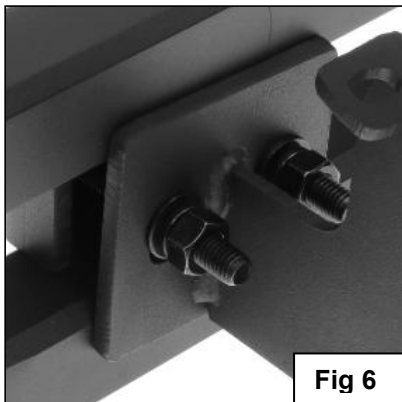


Fig 6



Installation Completed

Fig 7