

Installation Instructions for IA08SIG0B

by APS Auto Parts Specialist Inc.

Application: For 2009-2015 HONDA PILOT/2009-2013 Acura MDX

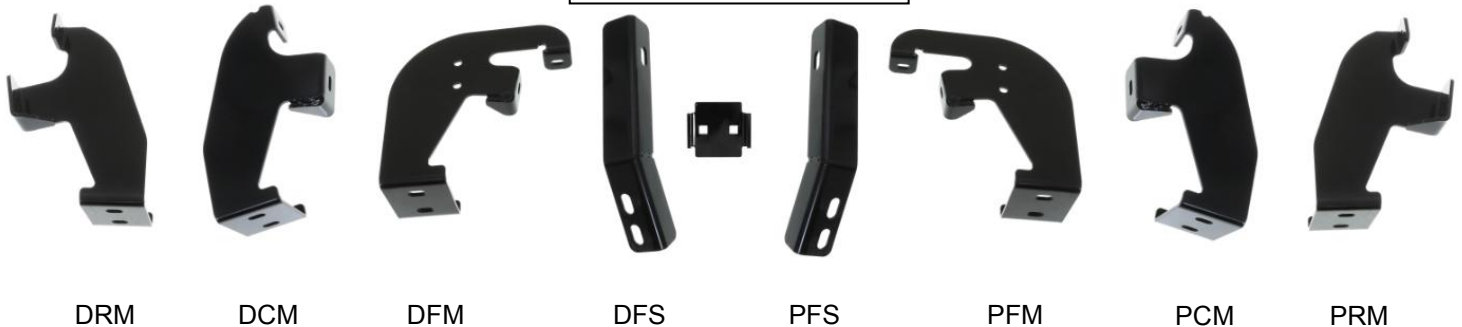
Estimated Time: 1 to 2 hours



The instruction here is for your reference only. We strongly recommend the professional installer for best result. We are not responsible for any damage caused by the installation. Thank you for choosing our product!

PARTS LIST:

Item	QTY	Description	Item	QTY	Description
#1	2	Driver/ Passenger Side Bar	#12	1	8mm Insert Installation Tool
#2	1	Driver Front Mounting Bracket (DFM)	#13	4	M10X1.5 - 35mm Hex Bolts
#3	1	Passenger Front Mounting Bracket(PFM)	#14	10	M10 Large Flat Washer
#4	1	Driver Front Support Bracket (DFS)	#15	18	M10 Lock Washer
#5	1	Passenger Front Support Bracket (PFS)	#16	18	M10X1.5 Hex Nuts
#6	1	Driver Center Mounting Bracket (DCM)	#17	12	M8X1.25 - 25mm Hex Bolts
#7	1	Passenger Center Mounting Bracket (PCM)	#18	12	M8 Lock Washers
#8	1	Driver Rear Mounting Bracket (DRM)	#19	12	M8 Flat Washers
#9	1	Passenger Rear Mounting Bracket (PRM)	#20	6	2-Hole Support Bracket
#10	2	M10x40mm Bolt Plate	#21	12	M10X1.5-75 Carriage Bolts
#11	2	M8X1.25mm Threaded Insert	#22	12	M10 Flat Washer

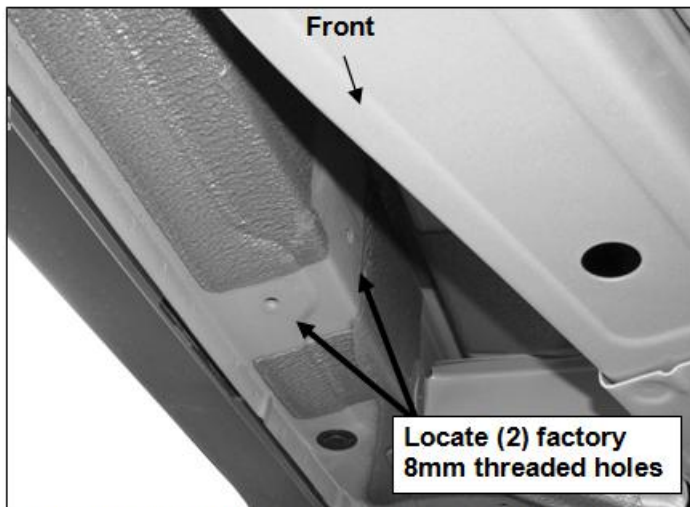
2-Hole Support Bracket**PROCEDURE:**

1. Remove contents from box, verify if all parts listed are present and undamaged. Carefully read and understand all instructions before attempting installation.
2. Starting on the driver side, locate the two factory 8mm threaded holes, one located in the bottom of the floor panel and the second in the side of the inner body panel (**FIG 1**). **IMPORTANT:** All factory threaded holes may be covered with rubber plugs or undercoating. Scrape off any excess undercoating from mounting surfaces.
3. Select the driver side Front Mounting Bracket. Attach the Bracket to the two threaded holes using the provided (2) 8mm x 25mm Hex Bolts, (2) 8mm Lock Washers and (2) 8mm Flat Washers. Snug but do not tighten hardware at this time, (**FIG 2**).
4. Select (1) 10mm Bolt Plate, (**FIG 3**). Insert the Bolt Plate into the factory hole in the bottom of the frame channel, (**FIG 4**). Rotate the Bolt Plate clock-wise 90- degrees or until it stops turning. **NOTE:** To help determine the correct inner mounting hole on the frame to use, hold the Support Bracket up to the back of the Front Bracket with the inner end lined up with the hole in the bottom of the frame channel.(**FIG 5**)
5. Bolt the driver side Support Bracket to the back of the front Mounting Bracket with (2) 10mm x 35mm Hex Bolts, (4) 10 mm Flat Washers, (2) 10mm Lock Washers and (2) 10mm Hex Nuts, (**FIG 5**). Next , hang the inner end of the Support Bracket from the previously installed Bolt Plate using (1) 10mm Flat Washer, (1) 10mm Lock Washer and (1) Hex Nut. Do not fully tighten hardware at this time.
6. Move to the center and locate the (2) 8mm threaded holes on the bottom to the floor panel and bottom of the frame channel, (**FIG 6**). Select the driver side Center Mounting Brackets, (**FIG 7**).

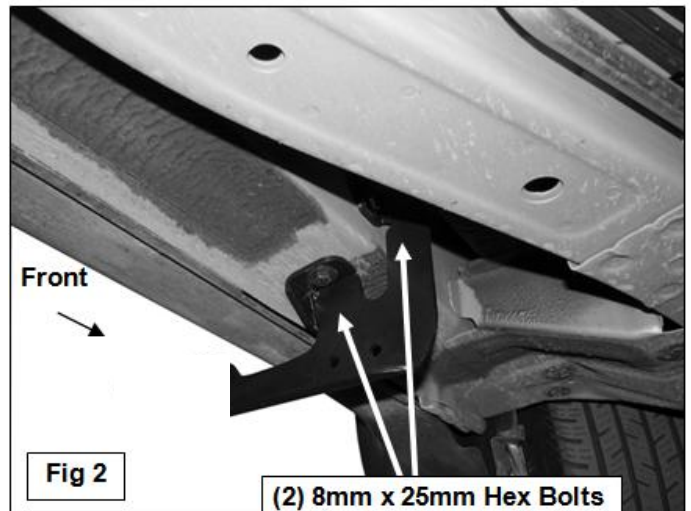
- IMPORTANT:** Center and Rear Brackets are similar but unique. To help identify, the Center Brackets feature a notch cut out of the inner end of the Bracket. Attach the Center Bracket to the two threaded holes using the provided (2) 8mm X 25mm Hex Bolts, (2) 8mm Lock Washers and (2) 8mm Flat Washers (**FIG 8**). Snug but do not tighten hardware at this time.
7. Continue to the rear mounting location. Locate the 8mm threaded hole in the bottom of the frame channel(**FIG 9**). Locate the OE hole in the bottom of floor panel. Remove rubber plugs as necessary. **NOTE:** To determine the correct mounting holes to use, hold the driver side rear Mounting Bracket up in position against the factory threaded hole in the end of the frame channel, (**FIG 9**). Remaining hole in mounting tab on the bracket will line up with correct factory hole in floor panel.
 8. Select the 8mm Threaded Insert Tool, (1) 8mm Threaded Insert, (1) 8mm Flat Washer and (1) 8mm x 25mm Hex Bolt, (**FIG 10**). Insert the assembly into the factory hole. Firmly hold the tool handle and assembly up tight against the floor panel and tighten the 8mm Hex Bolt until the insert is fully expanded in the hole, (**FIG 11**). **NOTE:** Do not over tighten or a pull out may occur. Once Insert is fully compressed, remove the bolt and tool from the Insert.
 9. Attach the driver side Rear Bracket to the (2) threaded holes with (2) 8mm x 25mm Hex Bolts, (2) 8mm Lock Washers and (2) 8mm Flat Washers, (**FIG 13**). Do not tighten hardware at this time.
 10. Select the Driver Side Bar. Slip (2) M10X1.5-75 Carriage Bolts into each 2-Hole Support Brackets ,and insert the 2-Hole support bracket into the Driver Side Bar.(**Fig 14**). Carefully position the Bar onto the (3) Mounting Brackets. **IMPORTANT:** Do not slide the Bar on the Brackets or damage to the finish may result. Attach the Driver Side Bar to the Mounting Brackets with (2) M10 Hex Nuts,(2)M10 lock washers and (2)M10 flat washers, (**Fig 15**). Do not tighten hardware.
 11. Level and adjust the Bar properly and tighten all hardware. **NOTE: Torque all M10 X1.5-75 Carriage Bolts to 22~25 lb-ft. Don't over tighten,or the aluminum square bars will be damaged by the brackets.**
 12. Repeat Step 2-11 for the other side installation. Installation completed!!! (**See Fig 16**)
 13. Do periodic inspections to the installation to make sure that all hardware is secure and tight.

Products have a high quality finish that must be cared for like any other exposed finish on the vehicle. Protect the finish with a non-abrasive automotive wax, (e.g.Pure Carnauba) on a regular basis. The use of any soap, polish or wax that contains an abrasive is detrimental, as the compounds scratch the finish and open it to corrosion.

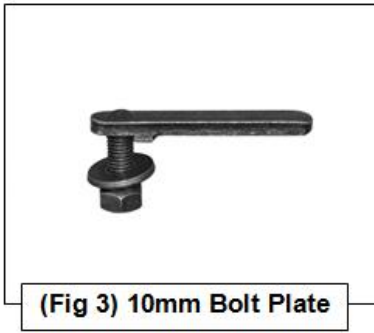
Driver/Passenger Side Installation Pictured



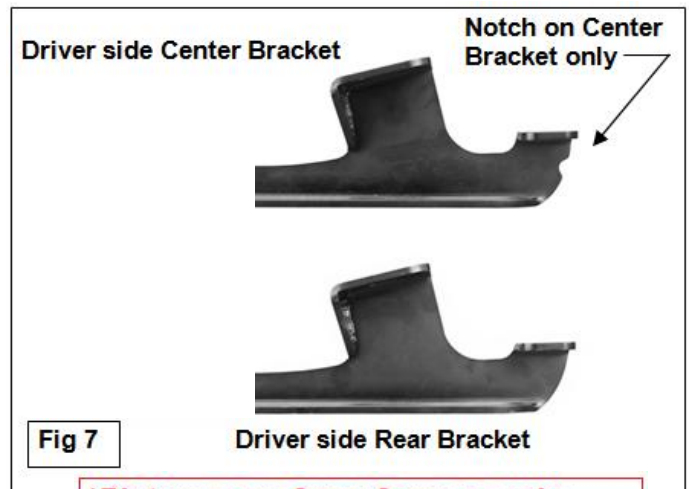
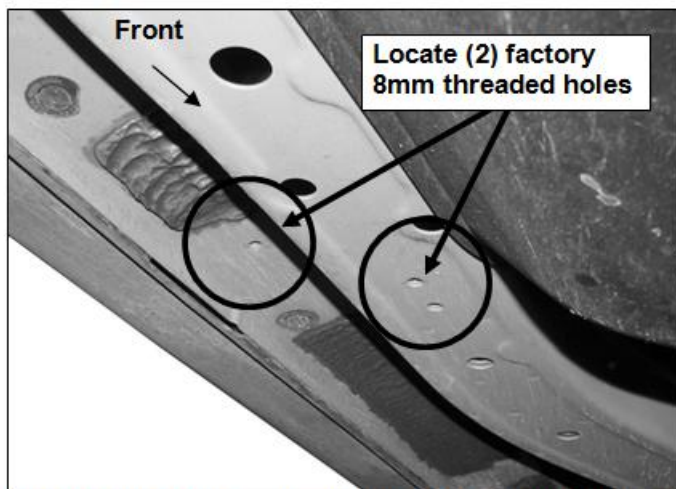
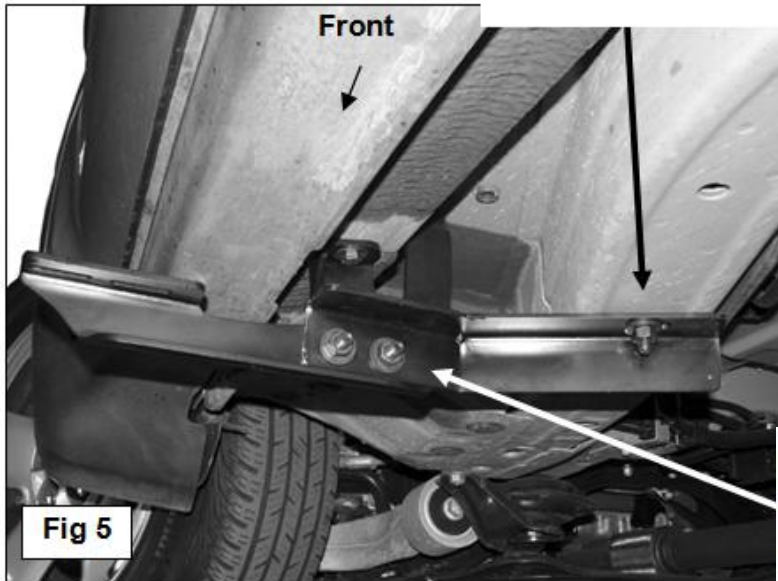
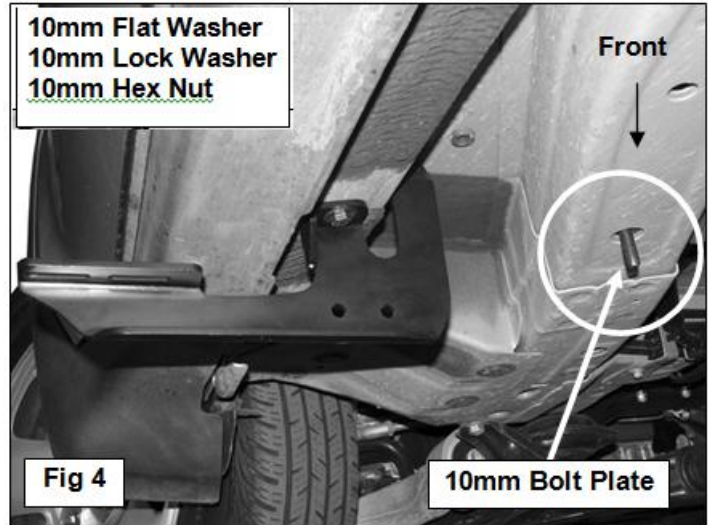
(Fig 1) Driver side front mounting location pictured



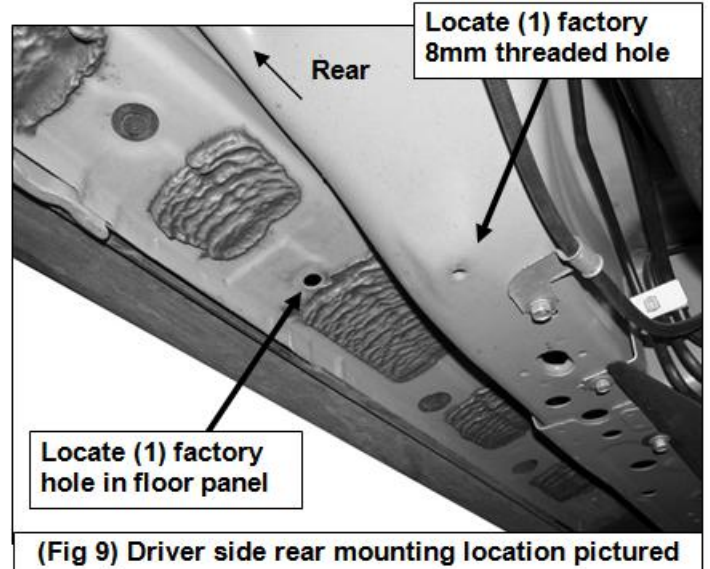
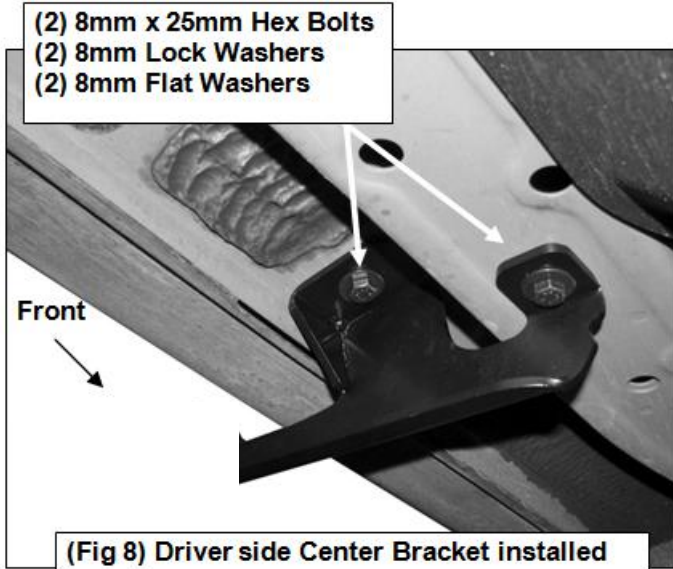
(2) 8mm x 25mm Hex Bolts
(2) 8mm Lock Washers
(2) 8mm Flat Washers



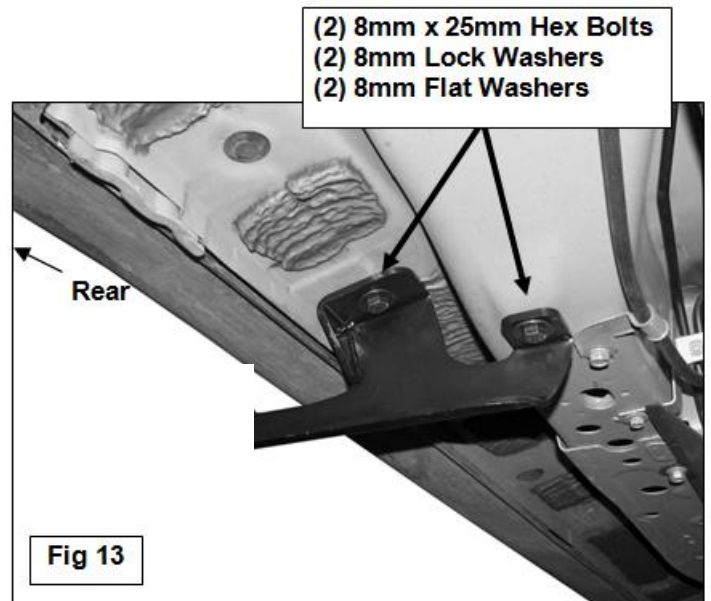
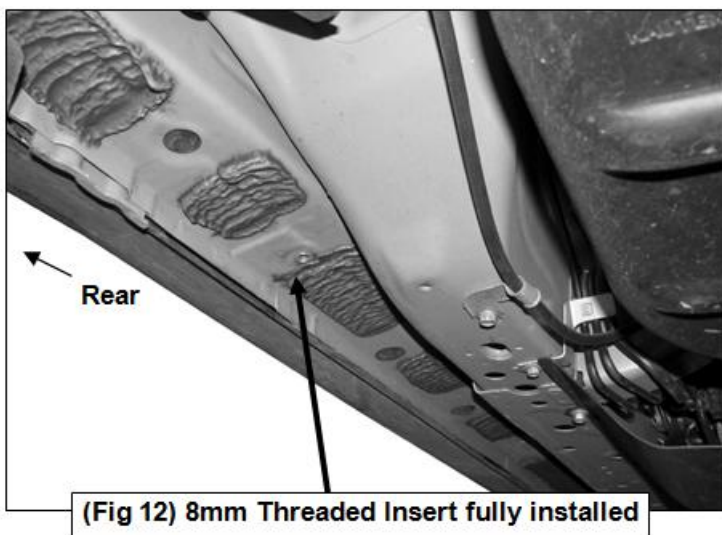
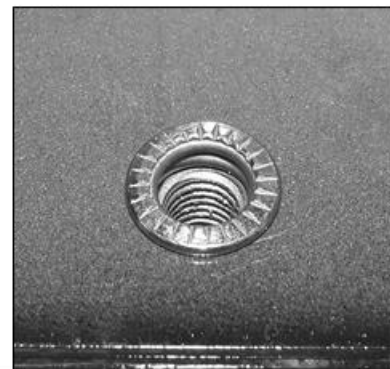
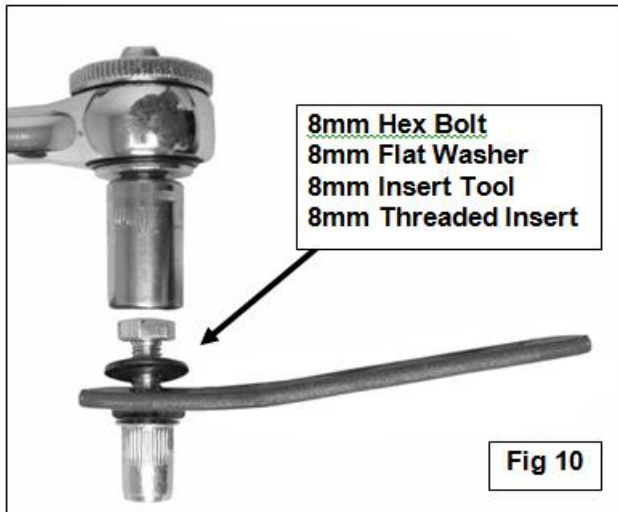
***Pictures are for reference only,
actual bars may be a little different.**



***Pictures are for reference only,
actual bars may be a little different.**



***Pictures are for reference only, actual bars may be a little different.**



For 2009-2015 HONDA PILOT/2009-2013 Acura MDX

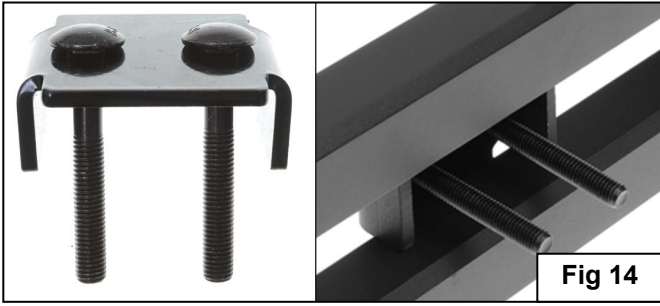


Fig 14

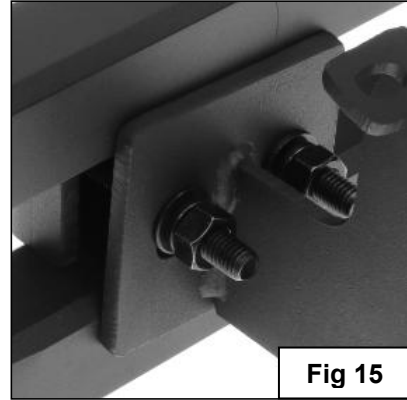


Fig 15



Complete Installation

Fig 16