

Installation Instructions for IA08SCE2B

by APS Auto Parts Specialist Inc.

Application: For 2016-2019 HONDA PILOT

Estimated Time: 1 to 2 hours



The instruction here is for your reference only. We strongly recommend the professional installer for best result. We are not responsible for any damage caused by the installation. Thank you for choosing our product!

PARTS LIST:

Item	QTY	Description	Item	QTY	Description
#1	2	Driver/ Passenger Side Bar	#8	12	M8 Flat Washers
#2	1	Driver Front Mounting Bracket (DFM)	#9	12	M8 Lock Washers
#3	1	Passenger Front Mounting Bracket (PFM)	#10	6	2-Hole Support Bracket
#4	2	Center Mounting Bracket (DCM/PCM)	#11	12	M10 Lock Washer
#5	1	Driver Rear Mounting Bracket (DRM)	#12	12	M10X1.5 Hex Nuts
#6	1	Passenger Rear Mounting Bracket (PRM)	#13	12	M10X1.5-75 Carriage Bolts
#7	12	M8X1.25-25 Hex Bolts	#14	12	M10 Flat Washer

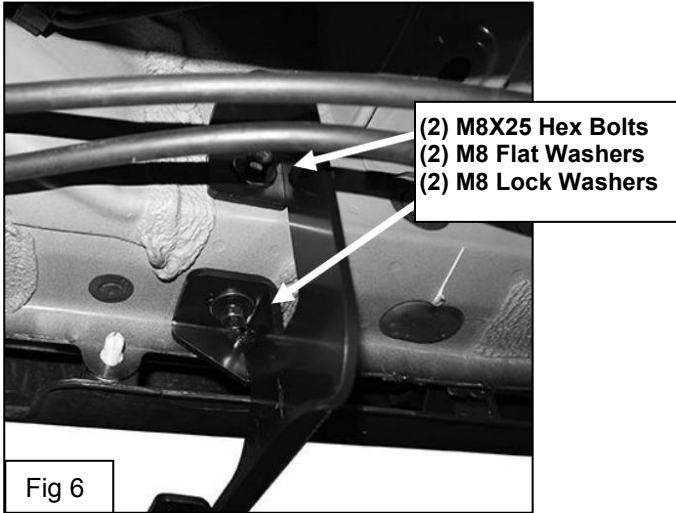
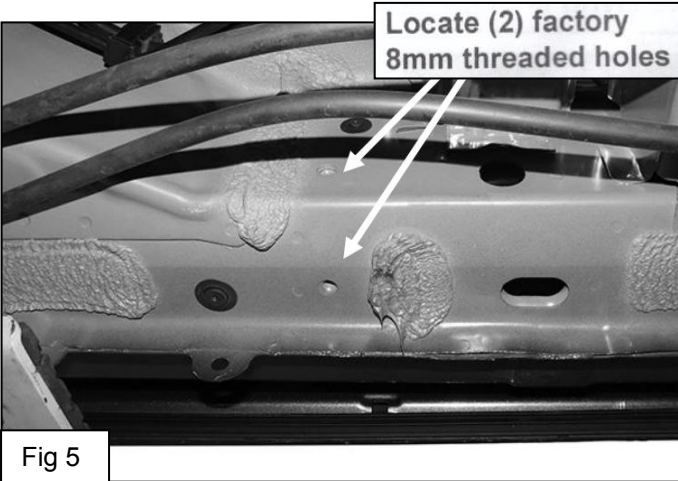
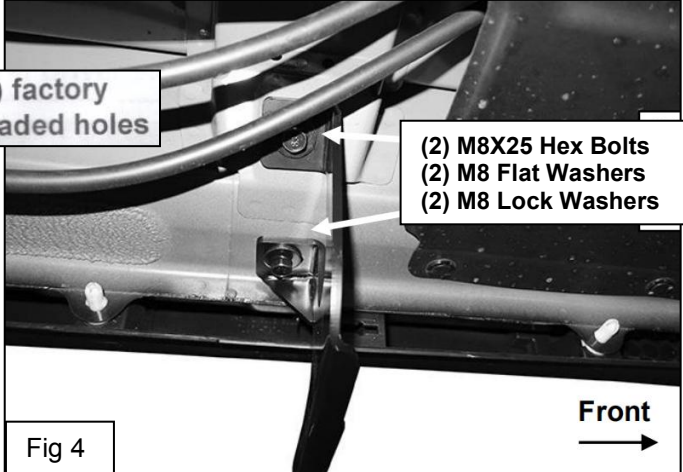
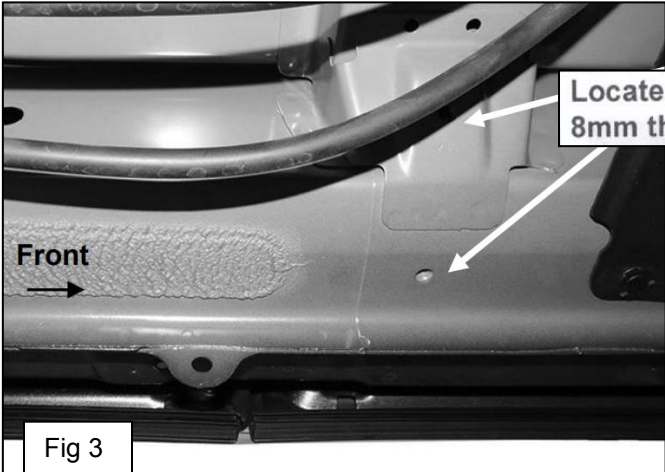
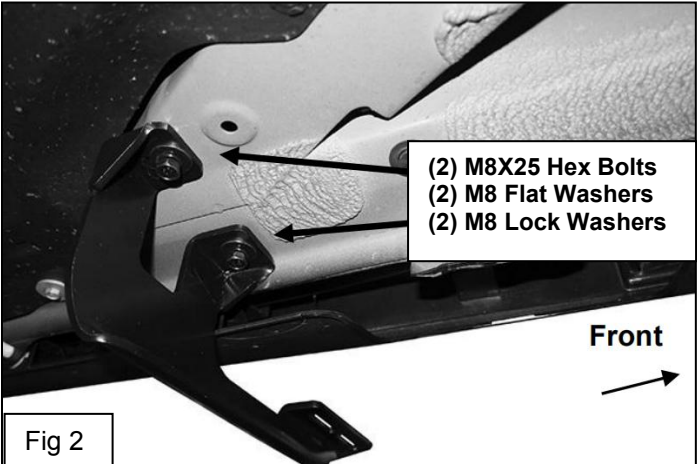
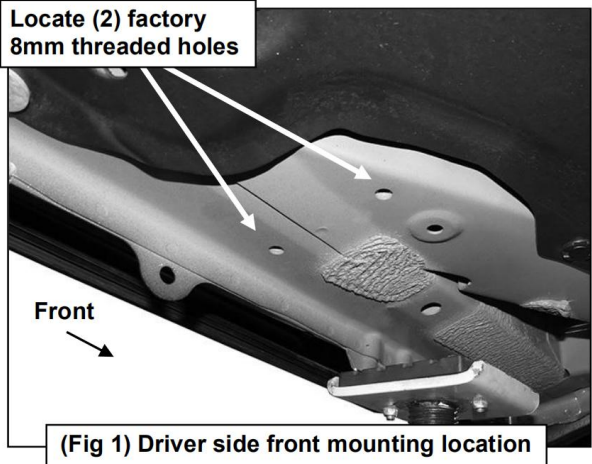
**PROCEDURE:**

1. Remove contents from box, verify if all parts listed are present and undamaged. Carefully read and understand all instructions before attempting installation.
2. Starting on the driver/left side front of the vehicle, locate the two factory 8mm threaded holes located in the bottom of the floor panel. **(Figure 1)**, NOTE: Brackets install in the factory running board mounting locations. Threaded holes may be covered with insulation. Clean mounting locations as required for proper Bracket installation.
3. Select (1) Front Mounting Bracket. NOTE: Brackets will fit left or right side. Attach the Bracket to the two threaded holes with (2) 8mm x 25mm Hex Bolts, (2) 8mm Lock Washers and (2) 8mm Flat Washers. **(Figure 2)**. Do not tighten hardware at this time.
4. Move to the center of the vehicle. Locate the two threaded holes in the bottom of the floor panel and body support panel, **(Figure 3)**. Repeat Steps 2&3 to attach (1) Center Bracket. **(Figures 4)**.
5. Next, move to the driver/left rear of the vehicle. Locate the holes in the bottom and inner side of the floor panel, **(Figure 5)**. Repeat Steps 2&3 to install (1) Rear Bracket, **(Figures 6)**.
6. Select the Driver Side Bar. Slip (2) M10X1.5-75 Carriage Bolts into each 2-Hole Support Brackets, and insert the 2-Hole support bracket into the Driver Side Bar. **(Fig 7)**. Carefully position the Bar onto the (3) Mounting Brackets. IMPORTANT: Do not slide the Bar on the Brackets or damage to the finish may result. Attach the Driver Side Bar to the Mounting Brackets with (2) M10 Hex Nuts, (2) M10 lock washers and (2) M10 flat washers, **(Fig 8)**. Do not tighten hardware.
7. Level and adjust the Bar properly and tighten all hardware. **NOTE: Torque all M10 X1.5-75 Carriage Bolts to 22~25 lb-ft. Don't over tighten, or the aluminum square bars will be damaged by the brackets.**

8. Repeat Step 2-7 for the other side installation. Installation completed!!! (See Fig 9)

9. Do periodic inspections to the installation to make sure that all hardware is secure and tight. Products have a high quality finish that must be cared for like any other exposed finish on the vehicle. Protect the finish with a non-abrasive automotive wax, (e.g. Pure Carnauba) on a regular basis. The use of any soap, polish or wax that contains an abrasive is detrimental, as the compounds scratch the finish and open it to corrosion.

Driver/Passenger Side Installation Pictured



Driver/Passenger Side Installation Pictured

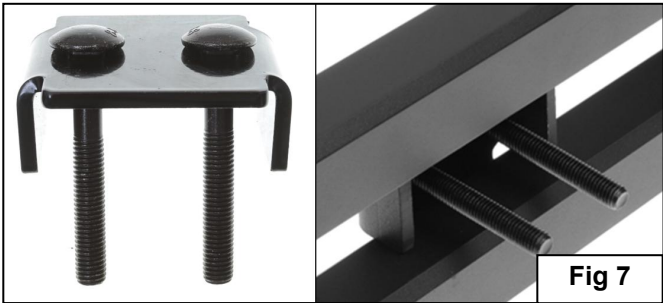


Fig 7

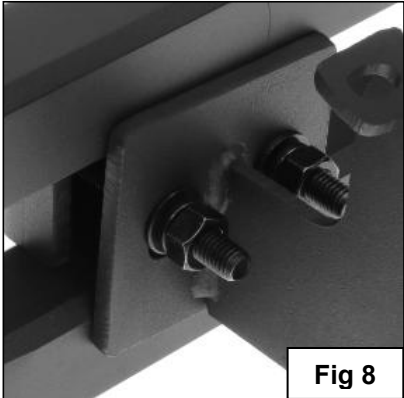


Fig 8



Complete Installation

Fig 9