

Installation Instructions for IA06SJA1B

by APS Auto Parts Specialist Inc.

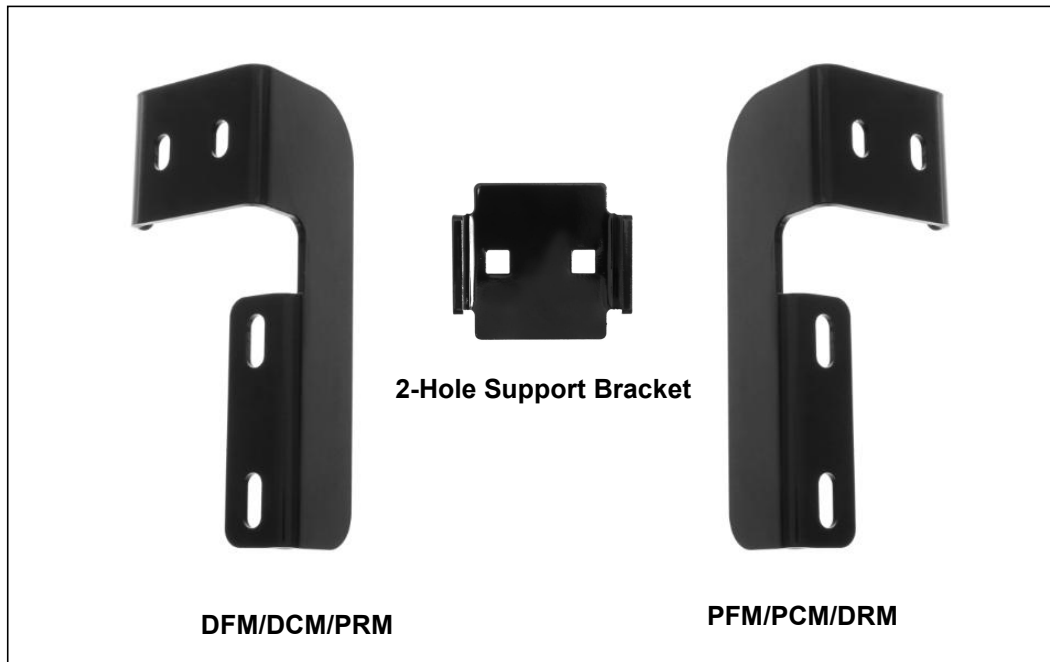
Application: For 1999-2016 Ford F-250/F-350/F-450/F-550 Super Duty Crew Cab
Estimated Time: 1 to 2 hours



The instruction here is for your reference only. We strongly recommend the professional installer for best result. We are not responsible for any damage caused by the installation. Thank you for choosing our product!

PARTS LIST:

Item	QTY	Description	Item	QTY	Description
#1	2	Driver/ Passenger Side Bar	#7	18	M10 Large Flat Washers
#2	3	Driver Front Mounting Bracket (DFM/DCM/PRM)	#8	24	M10 Lock Washers
#3	3	Passenger Front Mounting Bracket (DFM/DCM/PRM)	#9	18	M10 Hex Nuts
#4	6	2-Hole Support Bracket	#10	12	M10X1.5-75 Carriage Bolts
#5	6	M10 Clip Nuts	#11	12	M10 Flat Washers
#6	12	M10x1.5- 30mm Hex Bolts			

**PROCEDURE:**

- 1. REMOVE CONTENTS FROM BOX. VERIFY ALL PARTS ARE PRESENT. READ INSTRUCTIONS CAREFULLY BEFORE STARTING INSTALLATION. ASSISTANCE IS RECOMMENDED.**
- Starting on the driver side-front of the vehicle, locate the (5) pairs of factory holes along the bottom of the body, (pinch weld). Move to the 2nd pair of holes directly under the center of the front door, **(Figures 1 & 2)**. Each mounting location on the inner body panel is comprised of a rectangular hole with a round hole on each side directly above each pair of holes in the pinch weld, **(Figures 1 & 3)**.
- Select (2) M10 Clip Nuts. Insert Clip Nuts one at a time into the rectangular opening and slide the threaded hole outward towards the round hole. Line up the threaded hole in the Clip with the round hole next to the rectangular opening. **NOTE:** Threaded nut must go towards the inside of the side panel, **(Figures 3 & 4)**.
- Partially attach (1) Mounting Bracket to the Clip Nuts with the included (1) M10 x 30mm Hex Bolts, (1) M10 Lock Washers and (1)M10 Flat Washers, **(Figure 5)**. **NOTE:** Cradles on the Mounting Brackets should face the front of the vehicle.
- Bolt the (2) bottom holes in the Mounting Bracket to the (2) holes in the pinch weld with the included (1) M10 x 30mm Hex Bolts, (2) M10 Flat Washers, (1) M10 Lock Washers and (1) M10 Hex Nuts, **(Figure 5)**. **NOTE:** Insert the Hex Bolt with Flat Washer through the pinch weld first then through the Bracket from the outside to inside. Do not tighten hardware at this time.
- Move along the vehicle to the next(Center) mounting location. Repeat **Steps 2—5** to install (1) Mounting Bracket in the center location. Do not tighten hardware at this time.

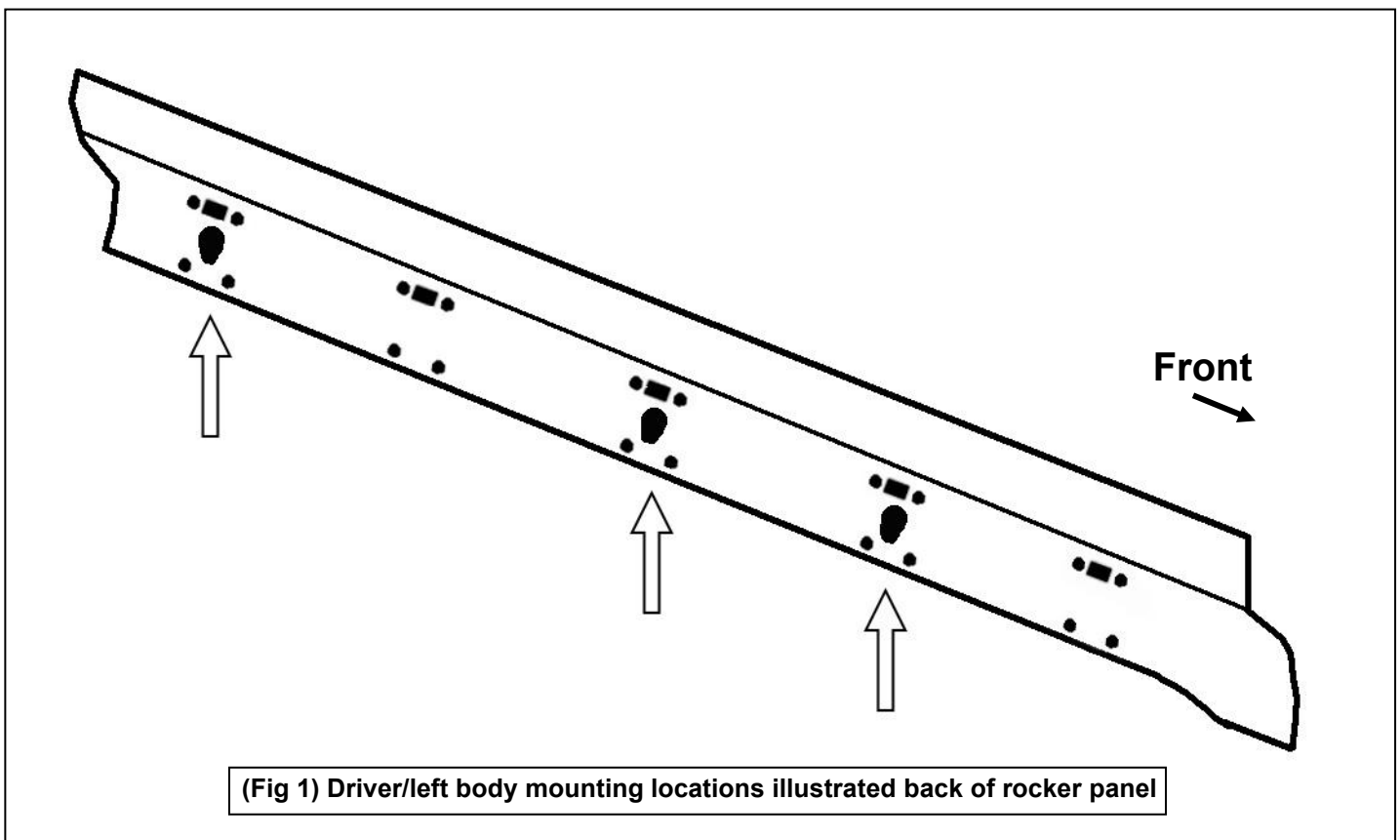
NOTE: There are (5) mounting locations along the inner body panel. Running Board installation will use the 2nd,3rd,and 5th mounting locations, **(Figure 1)**.

7. Repeat **Steps 2—5** to attach (1)Mounting Bracket to the rear location. Do not tighten hardware at this time.
8. Select the Driver Side Bar. Slip (2) M10X1.5-75 Carriage Bolts into each 2-Hole Support Brackets ,and insert the 2-Hole support bracket into the Driver Side Bar.**(Figure 6)**. Carefully position the Bar onto the (3) Mounting Brackets. **IMPORTANT:** Do not slide the Bar on the Brackets or damage to the finish may result. Attach the Driver Side Bar to the Mounting Brackets with (2) M10 Hex Nuts,(2)M10 lock washers and (2)M10 flat washers, **(Figure 7)**. Do not tighten hardware.
9. Level and adjust the Bar properly and tighten all hardware. **NOTE: Torque all M10 X1.5-75 Carriage Bolts to 22~25 lb-ft. Don't over tighten,or the aluminum square bars will be damaged by the brackets.**
- 10.Repeat **Steps 2—9** for passenger/right installation.
- 11.Do periodic inspections to the installation to make sure that all hardware is secure and tight.

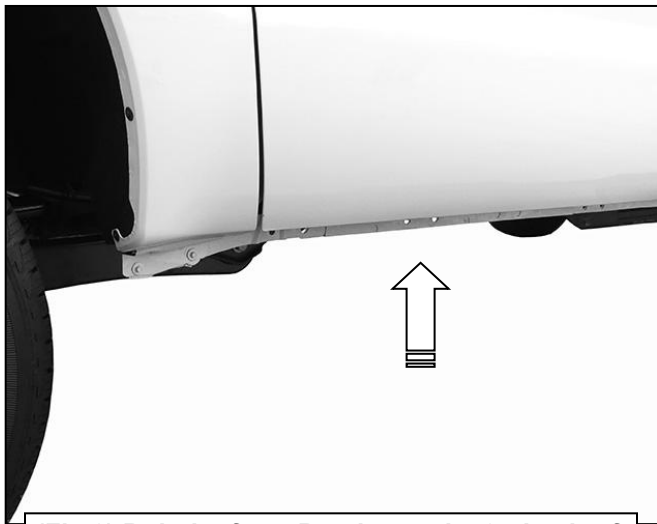
FINISH PROTECTION

Products have a high quality finish that must be cared for like any other exposed finish on the vehicle. Protect the finish with a non-abrasive automotive wax, (e.g.Pure Carnauba) on a regular basis. The use of any soap, polish or wax that contains an abrasive is detrimental, as the compounds scratch the finish and open it to corrosion..

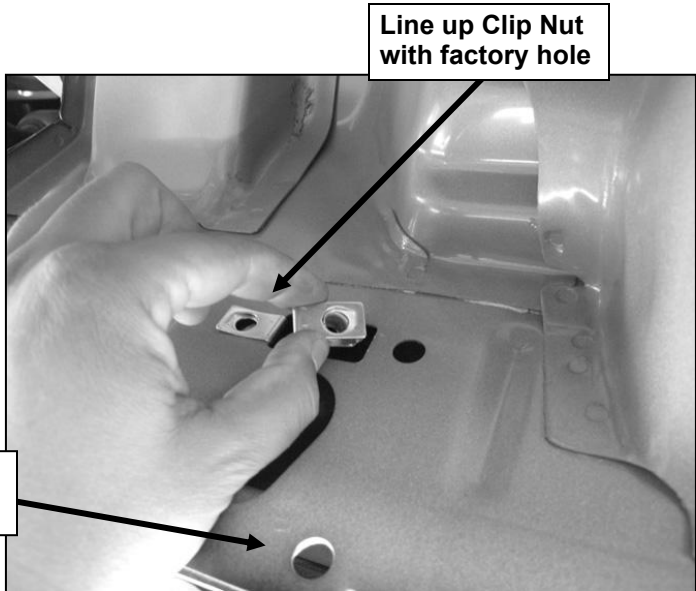
Driver Side Installation Pictured



Driver Side Installation Pictured



(Fig 2) Bolt the front Bracket to the 2nd pair of factory holes in the bottom of the pinch weld



(Fig 3) Typical Mounting Location (example only)

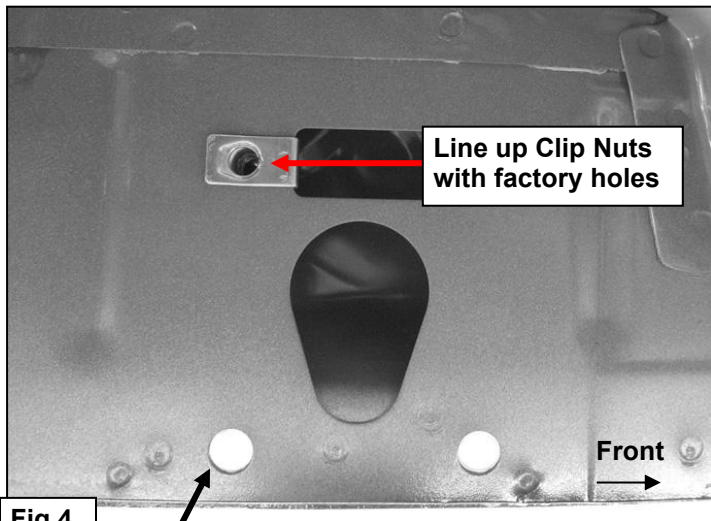
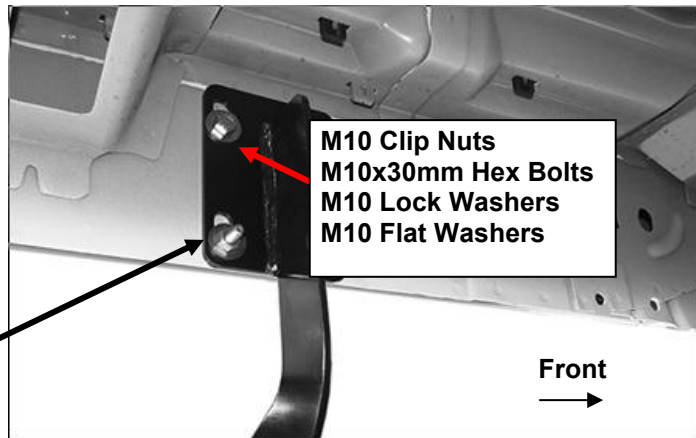


Fig 4

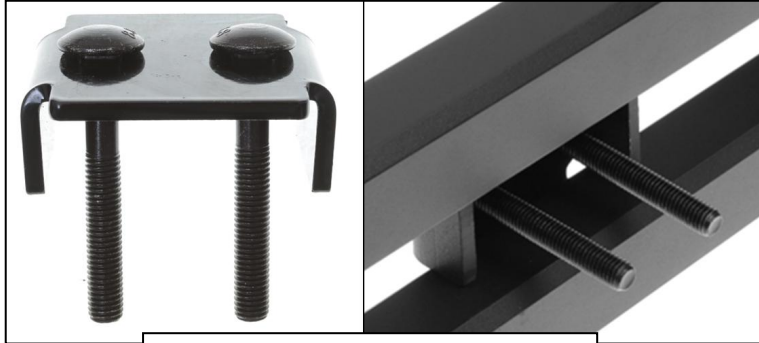
Factory holes in pinch weld pictured from behind body panel

- M10 x 30mm Hex Bolts
- (2) M10 Flat Washers
- M10 Lock Washers
- M10 Hex Nuts



(Fig 5) Front Bracket installation pictured

Driver Side Installation Pictured



(Fig 6) Slip M10 Carriage bolts into the 2-Hole Support Bracket



(Fig 7) Driver/Left side bracket installed



Complete Installation