

Installation Instructions for IA06SAG5B

by APS Auto Parts Specialist Inc.

Application: For 2015-2019 Ford F-150 SuperCrew Cab/
2017-2019 Ford F-250/F-350 SuperCrew Cab

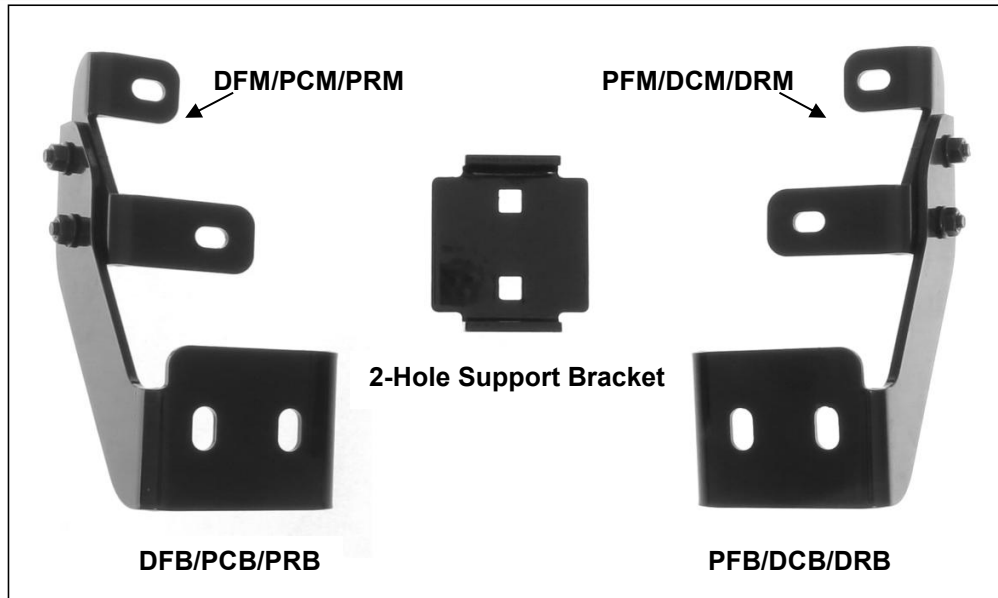
Estimated Time: 1 to 2 hours



The instruction here is for your reference only. We strongly recommend the professional installer for best result. We are not responsible for any damage caused by the installation. Thank you for choosing our product!

PARTS LIST:

Item	QTY	Description	Item	QTY	Description
#1	2	Driver/ Passenger Side Bar	#9	12	M8 Nylon Lock Nuts
#2	3	Driver Front Support Brackets(DFB/PCB/PRB)	#10	12	M10X1.5-75 Carriage Bolts
#3	3	Driver Front Mounting Brackets(DFM/PCM/PRM)	#11	12	M10 Flat Washers
#4	3	Passenger Front Support Brackets(PFB/DCB/DRB)	#12	12	M10 Lock Washers
#5	3	Passenger Front Mounting Brackets(PFM/DCM/DRM)	#13	12	M10 Hex Nuts
#6	6	2-Hole Support Bracket	#14	12	M8X1.25 Hex Flange Nuts
#7	12	Plastic Washers	#15	12	M8X1.25-20 Inner Hex Bolts
#8	12	M8 Flat Washers			



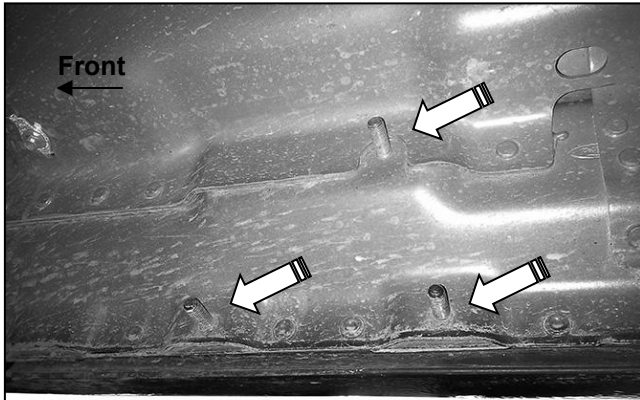
PROCEDURE:

REMOVE CONTENTS FROM BOX. VERIFY ALL PARTS ARE PRESENT. READ INSTRUCTIONS CAREFULLY BEFORE STARTING INSTALLATION. ASSISTANCE IS RECOMMENDED.

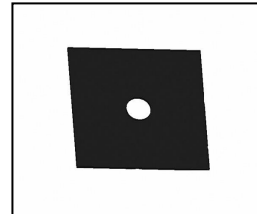
1. Start the installation under the passenger side of the vehicle. Locate the front factory running board mounting location along the inner side of the body, (**Figure 1**).
2. Slide (1) Plastic Washer over each factory mounting stud in the body panel, (**Figures 2 & 3**).
IMPORTANT: The Plastic Washers are designed to prevent corrosion between the aluminum body panel and the steel mounting brackets. **Do not install the Brackets without the Plastic Washers.**
3. Assemble mounting bracket and support bracket as shown(**Fig 4A**). Attach the Mounting Bracket to the (3) factory studs with (3) M8 Flat Washers and (3) M8 Nylon Lock Nuts, (**Figure 4B**). Snug but do not fully tighten the hardware.
4. Repeat **Steps 1—3** to install the (2) remaining center and rear passenger side Brackets.
5. Select the Passenger Side Bar. Slip (2) M10X1.5-75 Carriage Bolts into each 2-Hole Support Brackets ,and insert the 2-Hole support bracket into the Passenger Side Bar.(**Figure 5**). Carefully position the Passenger Side Bar onto the (3) Mounting Brackets. **IMPORTANT:** Do not slide the Bar on the Brackets or damage to the finish may result. Attach the Passenger Side Bar to the Mounting Brackets with (2) 10mm Hex Nuts,(2)10mm lock washers and (2)10mm flat washers, (**Figure 6**). Do not tighten hardware.
6. Level and adjust the Bar and tighten all hardware. **NOTE: Torque all M10 X1.5-75 Carriage Bolts to 22~25 lb-ft.Don't over tighten,or the aluminum square bars will be damaged by the brackets.**
7. Repeat **Steps 1—6** to install the driver Side.
8. Do periodic inspections to the installation to make sure that all hardware is secure and tight.

Products have a high quality finish that must be cared for like any other exposed finish on the vehicle. Protect the finish with a non-abrasive automotive wax, (e.g. Pure Carnauba) on a regular basis. The use of any soap, polish or wax that contains an abrasive is detrimental, as the compounds scratch the finish and open it to corrosion.

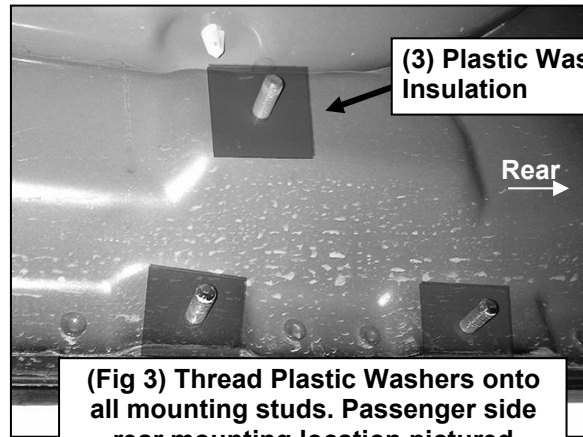
Passenger/Right Side Installation Pictured



(Fig 1) Passenger side front mounting location



(Fig 2) Plastic Insulation Washer



(Fig 3) Thread Plastic Washers onto all mounting studs. Passenger side rear mounting location pictured

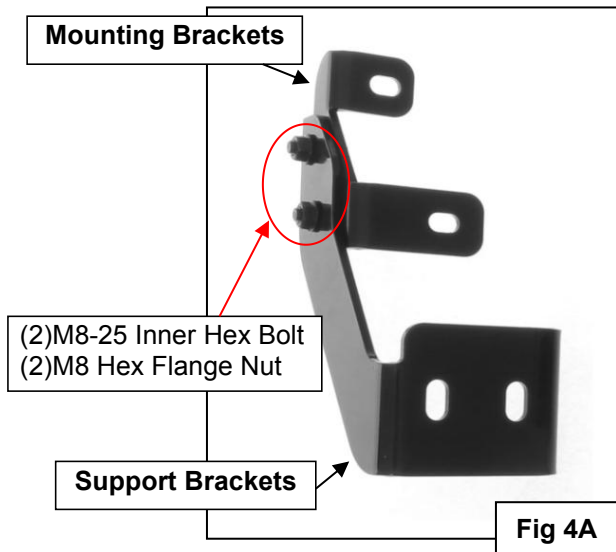
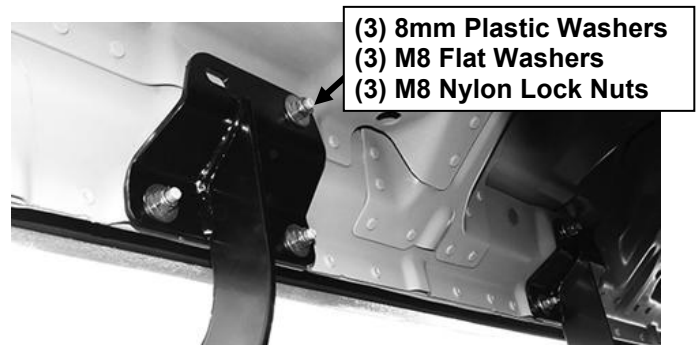
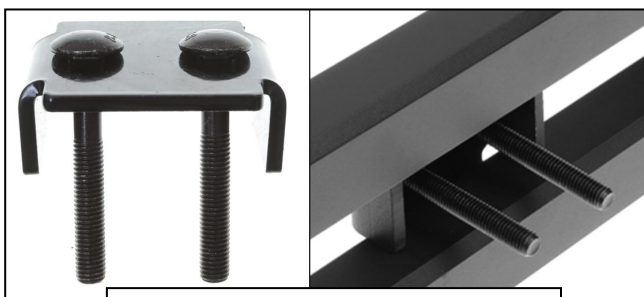


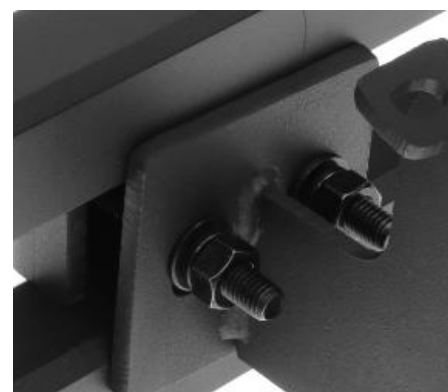
Fig 4A



(Fig 4B) Passenger/right front and center installation



(Fig 5) Slip 10mm Carriage bolts into the 2-Hole Support Bracket



(Fig 6) Passenger/right bracket installed