

For 2011-2019 Dodge Durango (Will Not Fit With OE Skirt Cladding)

Installation Instructions for IA04SIA3B

by APS Auto Parts Specialist Inc.

Application: For 2011-2019 Dodge Durango (Will Not Fit With OE Skirt Cladding)

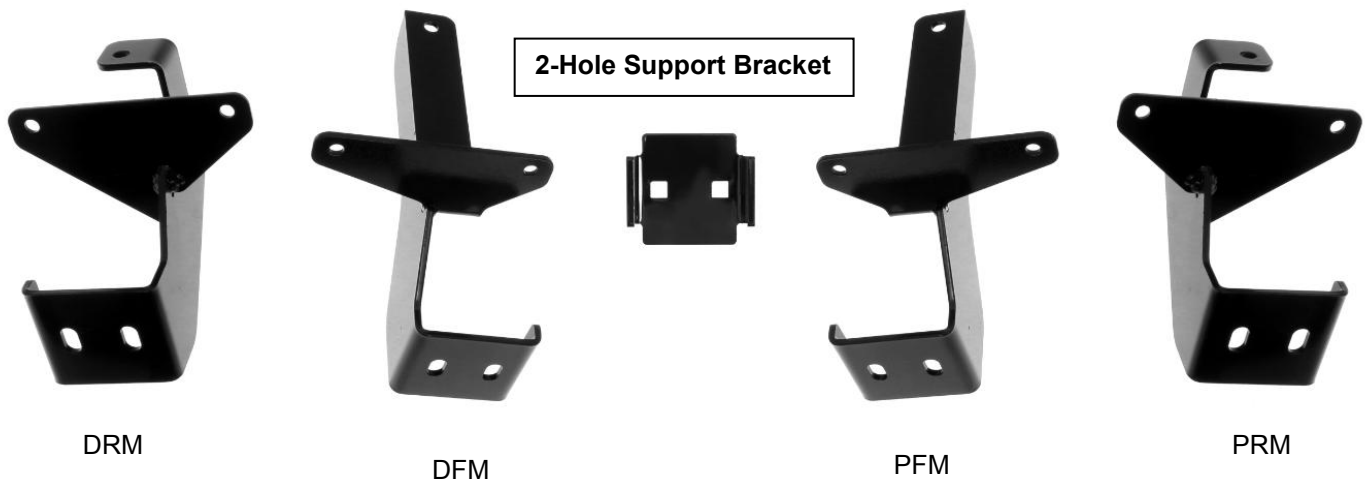
Estimated Time: 1 to 2 hours



The instruction here is for your reference only. We strongly recommend the professional installer for best result. We are not responsible for any damage caused by the installation. Thank you for choosing our product!

PARTS LIST:

Item	QTY	Description	Item	QTY	Description
#1	2	Driver/ Passenger Side Bar	#10	2	M10 J BOLTS
#2	1	Driver Front Mounting Bracket (DFM)	#11	4	2-Hole Support Bracket
#3	1	Passenger Front Mounting Bracket (PFM)	#12	2	M10x1.5 - 35 Hex Bolts
#4	1	Driver Rear Mounting Bracket (DRM)	#13	4	M10 Large Flat Washer
#5	1	Passenger Rear Mounting Bracket (PRM)	#14	12	M10 Lock Washer
#6	8	M8x1.25 - 20 Hex Bolts	#15	10	M10X1.5 Hex Nuts
#7	16	M8 Flat Washer	#16	8	M10X1.5-75 Carriage Bolts
#8	8	M8 Internal Tooth Lock Washer	#17	8	M10 Flat Washer
#9	8	M8X1.25 Hex Nuts			



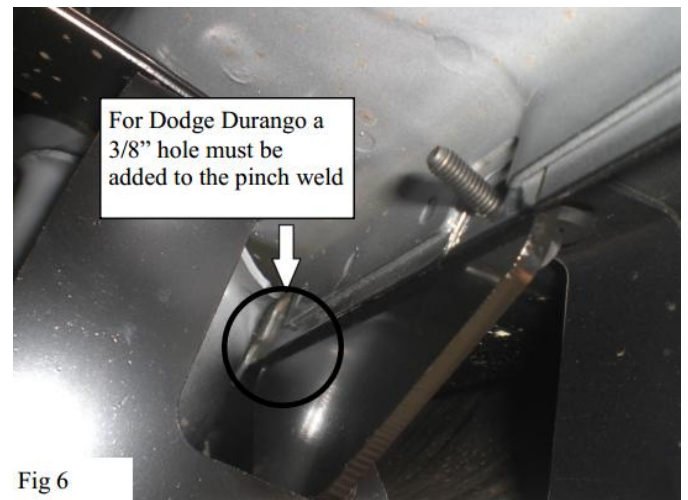
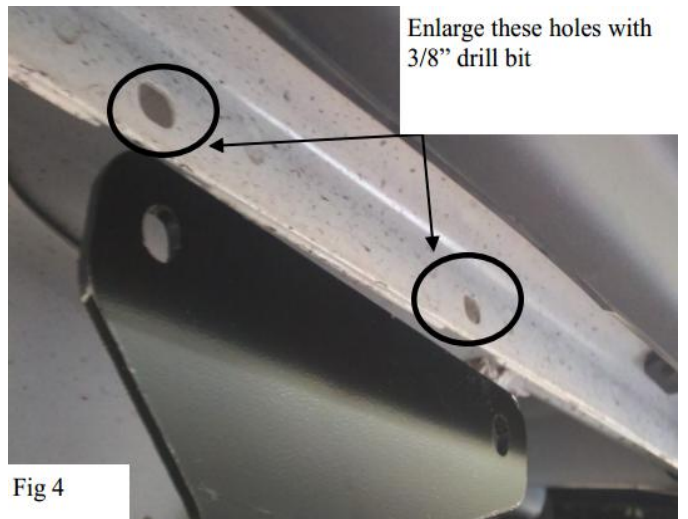
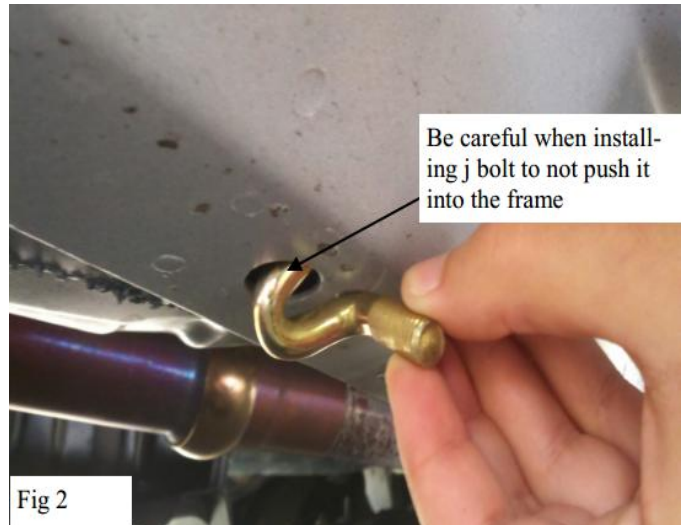
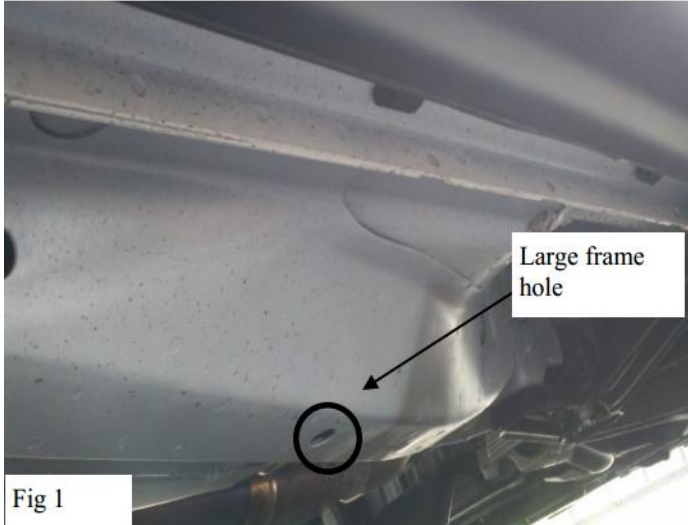
PROCEDURE:

1. Verify all parts are present. Read and understand instruction before beginning.
2. Starting from the front drivers side of the vehicle Install J-Bolt in the large hole in the frame . **(FIG 1, 2)**
Note: Dodge Durango requires pinch weld holes used for installation to be drilled out to 3/8" and one additional hole to be drilled through the pinch weld in the rear of the vehicle. (FIG 6)
3. Install front bracket to the J-Bolt using (1) large flat washer, (1) large split lock washer and (1) 3/8" hex nut. Secure the front bracket to the outside of the pinch weld using (2) M8 hex head bolts, (4) M8 flat washers, (2)M8 internal tooth lock washers and (2) M8 hex nuts. Do not tighten fully at this time. **(FIG 3,4).**
4. Remove the M10 fuel tank strap bolt and install the rear bracket using (1) M10 hex head bolt, (1) large flat washer and (1) split lock washer. Secure the rear bracket to the outside of the pinch weld using (2) M8 hex head bolts, (4) M8 flat washers, (2) M8 internal tooth lock washers and (2) M8 hex nuts. Do not tighten fully at this time. **(FIG 5,6).**
5. Select the Driver Side Bar. Slip (2) M10X1.5-75 Carriage Bolts into each 2-Hole Support Brackets ,and insert the 2-Hole support bracket into the Driver Side Bar.**(Fig 7)**. Carefully position the Bar onto the (2) Mounting Brackets. **IMPORTANT:** Do not slide the Bar on the Brackets or damage to the finish may result. Attach the Driver Side Bar to the Mounting Brackets with (2) M10 Hex Nuts,(2)M10 lock washers and (2)M10 flat washers, **(Fig 8)**. Do not tighten hardware.
6. Level and adjust the Bar properly and tighten all hardware. **NOTE: Torque all M10 X1.5-75 Carriage Bolts to 22~25 lb-ft. Don't over tighten,or the aluminum square bars will be damaged by the brackets.**
7. Repeat Step 2-6 for the other side installation. Installation completed!!! **(See Fig 9)**

For 2011-2019 Dodge Durango (Will Not Fit With OE Skirt Cladding)

8. Do periodic inspections to the installation to make sure that all hardware is secure and tight. Products have a high quality finish that must be cared for like any other exposed finish on the vehicle. Protect the finish with a non-abrasive automotive wax, (e.g. Pure Carnauba) on a regular basis. The use of any soap, polish or wax that contains an abrasive is detrimental, as the compounds scratch the finish and open it to corrosion.

Driver/Passenger Side Installation Pictured



For 2011-2019 Dodge Durango (Will Not Fit With OE Skirt Cladding)

Driver/Passenger Side Installation Pictured

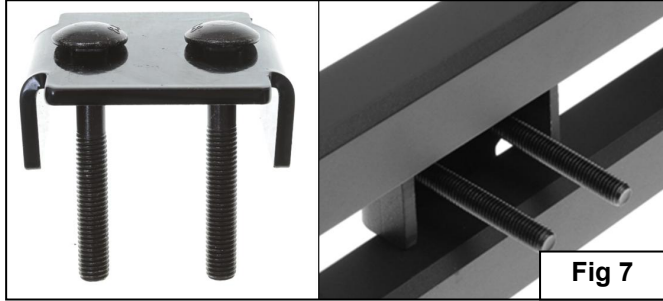


Fig 7

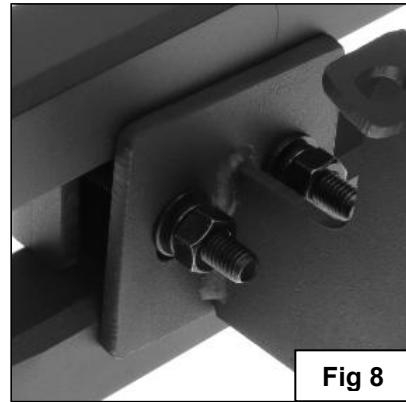


Fig 8



Complete Installation

Fig 9