



For 2007-2017 Chevrolet Traverse /2007-2016 GMC Acadia (Incl. 2017 Acadia Limited) (Excl. Denali) /2007-2009 Buick Enclave / 2007-2010 Saturn Outlook

Installation Instructions for IA03SAC3B by APS Auto Parts Specialist Inc.

Application: For 2007-2017 Chevrolet Traverse /2007-2016 GMC Acadia (Incl. 2017 Acadia Limited) (Excl. Denali) /
2007-2009 Buick Enclave / 2007-2010 Saturn Outlook

Estimated Time: 1 to 2 hours



The instruction here is for your reference only. We strongly recommend the professional installer for best result. We are not responsible for any damage caused by the installation. Thank you for choosing our product!

PARTS LIST:

Item	QTY	Description	Item	QTY	Description
#1	2	Driver/ Passenger Side Bar	#10	8	M10 Flat Washers
#2	2	Driver Front Mounting Bracket (DFM/DRM)	#11	20	M10 Lock Washers
#3	2	Passenger Front Mounting Bracket (PFM/PRM)	#12	16	M10 Hex Nuts
#4	2	Driver Center Mounting Bracket(DCM/PCM)	#13	4	M8X1.25-30 Hex Bolts
#5	2	M10X1.5 Double Nut Plates	#14	4	M8 Flat Washers
#6	4	M10 x 35 Bolt & M8 Nut Plates	#15	4	M8 Lock Washers
#7	4	M10 Plastic Retainer	#16	12	M10X1.5-75 Carriage Bolts
#8	4	M10X1.5-35 Hex Bolts	#17	12	M10 Flat Washers
#9	6	2-Hole Support Bracket			



PROCEDURE:

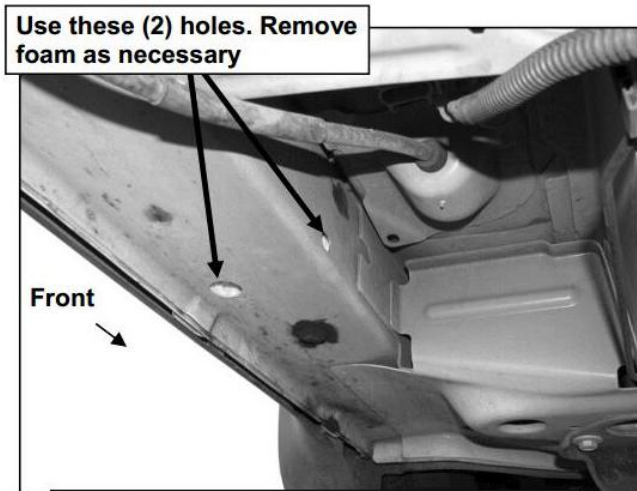
1. Verify all parts are present. Read and understand instruction before beginning.
2. Start installation on the driver side. Locate the factory holes in the bottom and inside of the floor panel towards the front tire opening, **(FIG 1)**. **IMPORTANT:** On some vehicles, the body panel may be filled with expanding foam insulation. Use a long flat blade screwdriver or heavy wire, (coat hanger for example), to dig out the foam to provide clearance for the Bolt&Nut Plates, **(FIG 2)**.
3. Select (1) 10mm Bolt&Nut Plate, **(FIG 3A)**. Insert the bent end with the 8mm nut into the hole in the bottom of the floor panel, **(FIG 3B)**. Line up the hex nut with the hole in the side of the floor panel. Thread (1) 10mm Plastic Retainer onto the 10mm Bolt end of the Bolt&Nut Plate, **(FIG 3B)**. **NOTE:**The Plastic Retainer is provided to help hold the Bolt&Nut Plate in position during Bracket installation.
4. Select (1) driver side Mounting Bracket. Position the Bracket up to the vehicle and over the previously installed 10mm Bolt&Nut Plate, **(FIG 4)**. Attach the Bracket to the Bolt&Nut Plate with (1) 10mm Flat Washer, (1) 10mm Lock Washer and (1) 10mm Hex Nut. Attach the Bracket to the 8mm Nut with (1) 8mm x 30mm Hex Bolt, (1) 8mm Lock Washer and (1) 8mm Flat Washer. Do not tighten hardware at this time.
5. Move along the floor panel to the center of the vehicle, **(FIG 5)**. Select (1) 10mm Double Nut Plate, **(Figure 6A)**. Insert the Nut Plate into the large hole in the floor panel reinforcement, **(FIG 6B)**. Line up the threaded hole with the single small hole in the reinforcement, **(FIG 7)**. **NOTE:** The Nut Plate is offset to line up with the offset holes in the floor panel reinforcement.
6. Select (1) Center Bracket. **NOTE:** There is no left or right to the center Bracket, they will fit either side. Line up the (2) holes in the Center Bracket with the Double Nut Plate. Bolt the

Bracket to the Double Nut Plate with (2) 10mm Hex Bolts, (2) 10mm Lock Washers and (2) 10mm Flat Washers, (FIG 8). Leave hardware loose at this time.

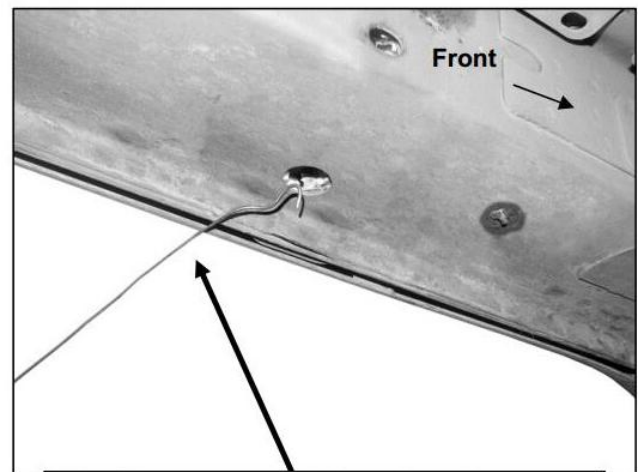
7. Continue along the floor panel toward the rear of the vehicle. Locate the round hole in the bottom of the floor panel as described in **Step 2, (FIG 9)**. Repeat **Steps 2 – 4** to install the remaining driver side Bracket in the rear location, (FIG. 10).
8. Select the Driver Side Bar. Slip (2) M10X1.5-75 Carriage Bolts into each 2-Hole Support Brackets, and insert the 2-Hole support bracket into the Driver Side Bar.(Fig 11). Carefully position the Bar onto the (4) Mounting Brackets. **IMPORTANT:** Do not slide the Bar on the Brackets or damage to the finish may result. Attach the Driver Side Bar to the Mounting Brackets with (2) M10 Hex Nuts,(2)10mm lock washers and (2)10mm flat washers, (Fig 12). Do not tighten hardware.
9. Level and adjust the Bar properly and tighten all hardware. **NOTE: Torque all M10 X1.5-75 Carriage Bolts to 22~25 lb-ft. Don't over tighten,or the aluminum square bars will be damaged by the brackets.**
10. Repeat Step 2-9 for the other side installation. **IMPORTANT:** The Center Bracket and Double Nut Plate used are the same, driver side and passenger side. Installation completed!!! (See Fig 13)
11. Do periodic inspections to the installation to make sure that all hardware is secure and tight.

Products have a high quality finish that must be cared for like any other exposed finish on the vehicle. Protect the finish with a non-abrasive automotive wax, (e.g.Pure Carnauba) on a regular basis. The use of any soap, polish or wax that contains an abrasive is detrimental, as the compounds scratch the finish and open it to corrosion.

Driver/Passenger Side Installation Pictured



(Fig 1) Driver side front mounting location



(Fig 2) Use wire to pull foam from floor panel

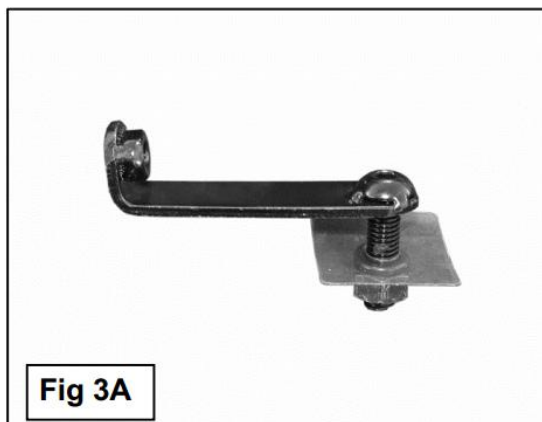


Fig 3A

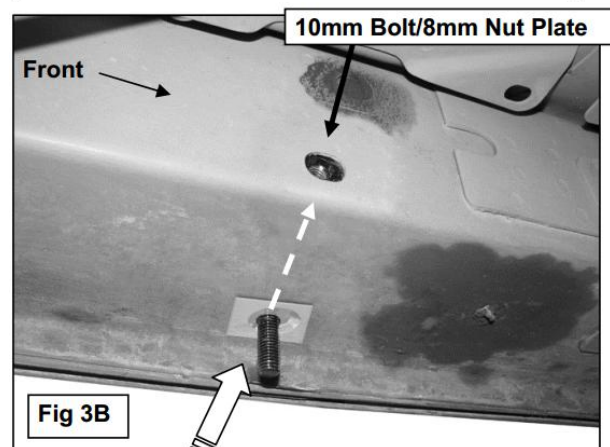
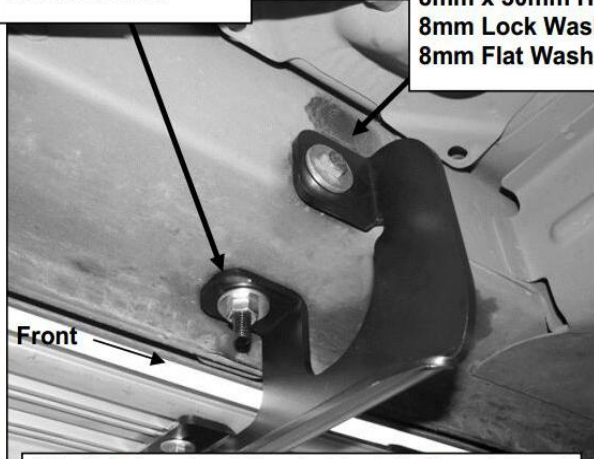


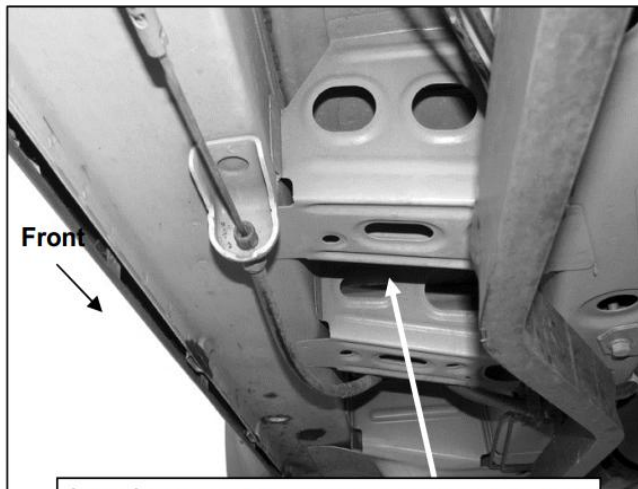
Fig 3B

10mm Flat Washer
10mm Lock Washer
10mm Hex Nut

8mm x 30mm Hex Bolt
8mm Lock Washer
8mm Flat Washer



(Fig 4) Driver front Bracket installation pictured



(Fig 5) Driver side center mounting location



Fig 6A

Line up offset hole in Nut
Plate with single small hole

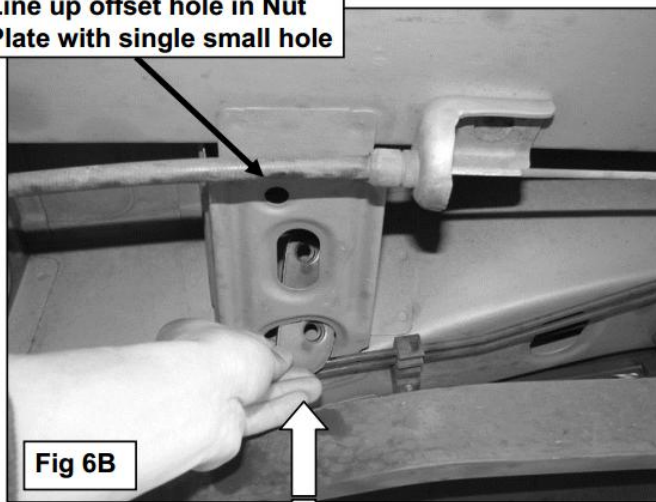
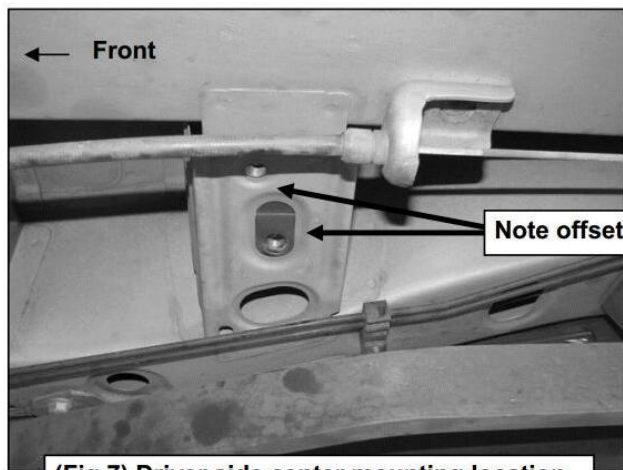


Fig 6B



(Fig 7) Driver side center mounting location

(2) 10mm x 35mm Hex Bolts
(2) 10mm Lock Washers
(2) 10mm Flat Washers

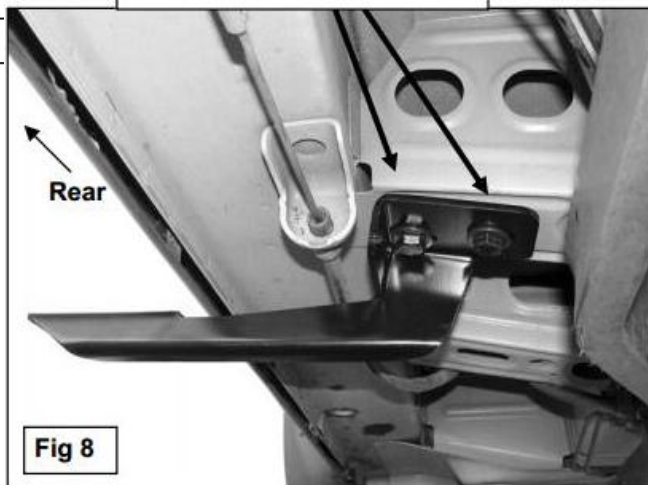
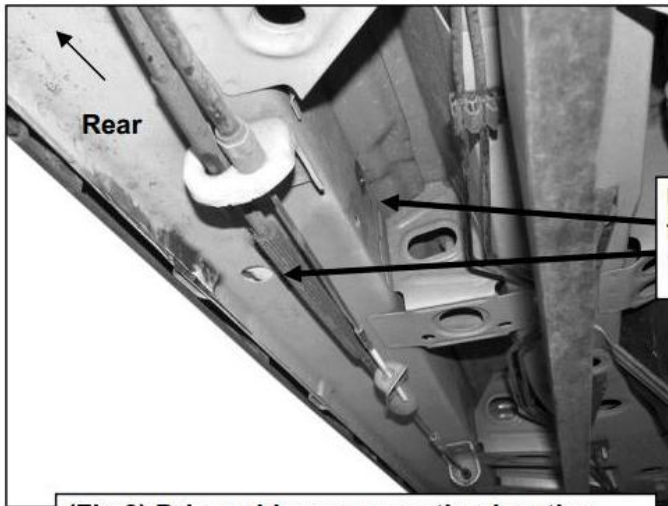


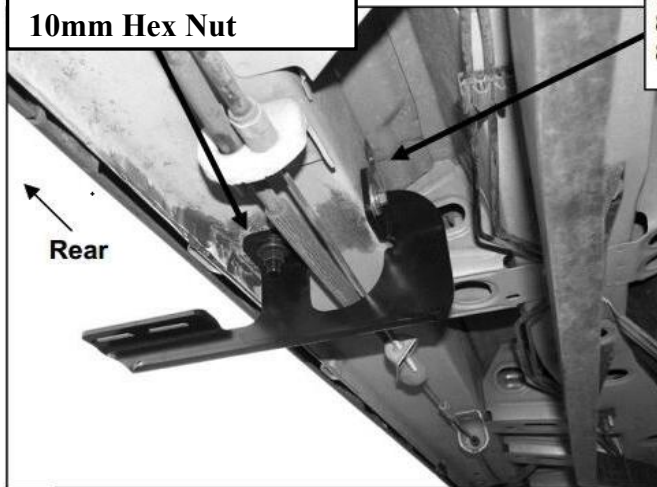
Fig 8



Use these (2) holes. Remove foam as necessary. Insert 10mm Bolt/8mm Nut Plate

(Fig 9) Driver side rear mounting location

10mm Flat Washer
10mm Lock Washer
10mm Hex Nut



8mm x 30mm Hex Bolt
8mm Lock Washer
8mm Flat Washer

(Fig 10) Driver side rear Bracket pictured

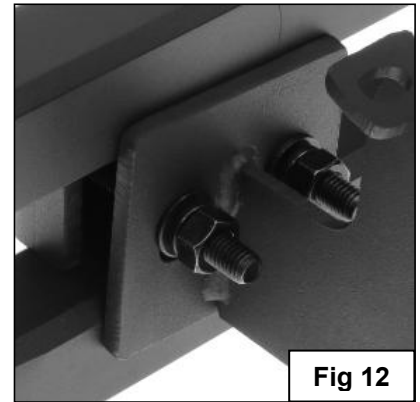


Fig 12

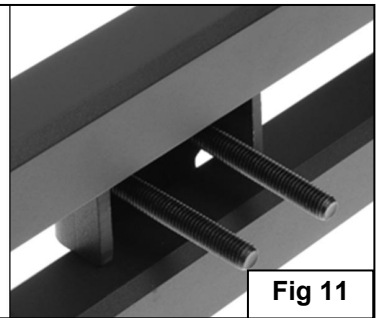


Fig 11



Complete Installation

Fig 13