



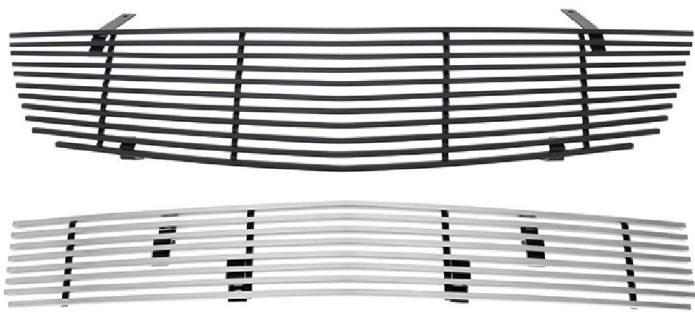
PATENT PRODUCT

Grille Installation Instruction

Part#	GR19HGH96J	Application	For 2007-2009 Saturn Aura
--------------	------------	--------------------	----------------------------------

Parts List	Item	Part Name	QTY	Description	Item	Part Name	QTY	Description
	1	Billet Grille	2	Stainless steel	8	Kep Nuts	2	1/4-20UNC
	2	2-Hole Tabs	2		9	Hex Bolts	2	1/4-20UNCX3/4"
	3	Flat Nuts	2	8#	10	Screws	2	8#X1"
	4	L Shape Tabs	2		11	Phillips Screws	2	8#x3/4"
	5	Tabs	2		12	Keyslot Hex Head Tapping Screw	4	1/4 X3/4"
	6	U-Clip Nuts	6		13	Truss Socket Tapping Screw	4	8#X1"
	7	Screws	2	8#x1 1/2"				

Install Notes: Overlay Replacement Drill Cut

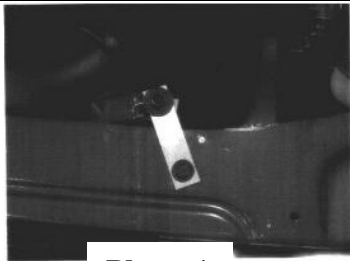
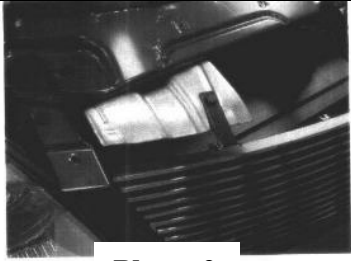

Step	Description	illustration
1	Identify the grille & hardware with parts list.	
2	Start with the upper section. Remove 5 bolts across the top edge of the factory grill with a 10mm socket. Remove 2 Phillips head screws, one on each corner. Remove 2 small hex head screws with a 9/32"socket, one on each corner.	
3	Reach behind the grill and release the plastic locking tabs around the perimeter of the grill opening with a flat blade screwdriver. Push the grill insert towards the vehicle and it will pop off of the backside of the urethane bumper. There are a total of 11 tabs. Start by releasing the tabs on the left and right sides of the grill, and then proceed to the tabs along the bottom edge.	
4	Remove the factory grill insert completely	
5	If you have a light colored vehicle, we recommend painting the tabs with flat black paint as they may be visible after the new grill is installed. DO NOT CUT OFF THE TABS.	
6	Center the grill billet grill in the opening, allowing it to rest on the bottom. The grill should be approximately 1/8"behind the front edge of the opening.	
7	Drill a 1/4"hole through the sheet metal support behind each of the upper mounting tabs and secure them with the supplied bolts and nuts. See photo 1.	
8	Drill a 3/16"hole through the plastic tab beneath each of the two lower mounting brackets and secure them with the supplied pan head screws and flat nuts. See photo 2.	
9	Close and latch the hood gently making sure that there is proper clearance.	

The instruction here is for your reference only. You may need to bend the grille a little bit to adjust to fit. We strongly recommend the professional installer for best result. We are not responsible for any damage caused by the installation. Thank you for choosing our product!



PATENT PRODUCT

Grille Installation Instruction

Part#	GR19HGH96J	Application	For 2007-2009 Saturn Aura
			
	Photo 1	Photo 2	Photo 3
10	Move on to the lower section. Remove front license plate and drill out the two rivets mounting the license plate bracket with a 3/16" drill bit.		
11	Remove the plastic splash pan from underneath the front of the vehicle by removing the 4 screws across the front edge, and the 2 plastic push in clips, one on each side towards the rear of the pan. See photos 4 and 5.		
12	Release the plastic push in clips around the perimeter of the backside of the black plastic bumper grill insert and push the grill out the back of the bumper.		
13	Install the 6 supplied tinnerman clips onto the slotted side of all 4 of the supplied brackets, and on the round hole side of the 2 longer brackets as shown in photo 6.		
14	Cut off the factory mounting tabs along the bottom edge of the opening flush to the backside of the opening with a sharp razor knife. There are 7 tabs that need to be removed. See photo 7.		
15	Attach the short brackets to the top mounting tabs of the grill, and the longer brackets to the bottom mounting tabs, loosely, using the 4 supplied screws with the smaller heads. The screws will go through the grill from the front side and into the bracket that will be on the back. Photos 8 and 9 show the correct orientation of the brackets.		
16	Center the billet grill insert behind the opening, and attach the upper mounting brackets to the black plastic shelf just above the opening using 2 of the supplied Phillips pan head screws.		
17	Mark and drill 2 1/8" holes in the bottom lip edge of the bumper for the 2 lower mounting brackets. Secure the grill using the other two pan head screws.		
18	Tighten all mounting hardware. Re-install splash pan using factory hardware. Re-install front license plate bracket using 2 (or all 4) of the supplied hex head, coarse thread silver screws.		
19	Installation completed!!!		

The instruction here is for your reference only. You may need to bend the grille a little bit to adjust to fit. We strongly recommend the professional installer for best result. We are not responsible for any damage caused by the installation. Thank you for choosing our product!

PATENT PRODUCT

Grille Installation Instruction

Part#	GR19HGH96J	Application	For 2007-2009 Saturn Aura
-------	------------	-------------	---------------------------



Photo 4



Photo 5

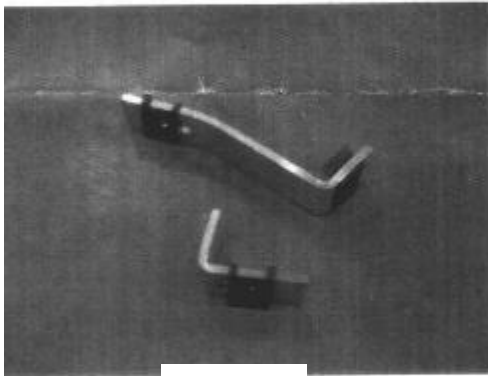


Photo 6



Photo 7



Photo 8 (top)



Photo 9 (bottom)

The instruction here is for your reference only. You may need to bend the grille a little bit to adjust to fit. We strongly recommend the professional installer for best result. We are not responsible for any damage caused by the installation. Thank you for choosing our product!