


Part#	<b>GR16GEE45H</b>	Application	<b>06~08 Pontiac Solstice – Stainless Steel Mesh Grille</b>					
-------	-------------------	-------------	---	--	--	--	--	--

Parts List	Item	Part Name	QTY	Description	Item	Part Name	QTY	Description
	1	Mesh Grille	2	Stainless steel	5	Tabs	8	
	2	Screws	8	6-32×3/4"	6	Nylon Lock Nuts	8	6-32

Install Notes: Overlay  Replacement  Drill  Cut

Step	Description	illustration
1	Identify the grille & hardware with parts list.	
2	Raise the hood and turn the front wheels all the way to one side	
3	Remove 2 small black hex head screws from the front edge of the inside of each wheel well with a 7mm socket. See photo 1.	
4	Remove of the same screws from the top edge of the front bumper cover near each side marker light. See photo 2.	
5	Remove the remaining mounting screws from the top edge of the front bumper cover. The screws are identical to those removed in steps 2&3. See photo 3.	
6	Remove 1 hex head bolt from the mounting bracket behind each fog light using a 10mm socket. See photo 4.	

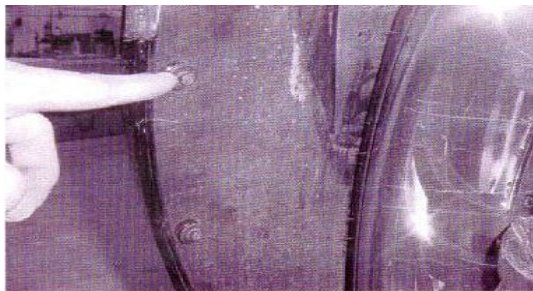


Photo 1

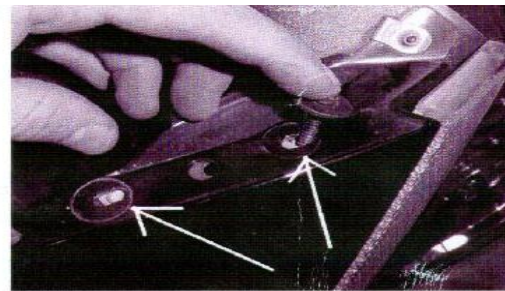


Photo 2



Photo 3

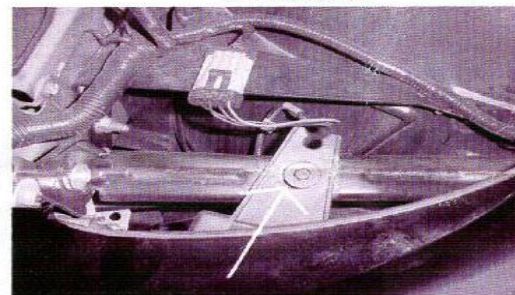
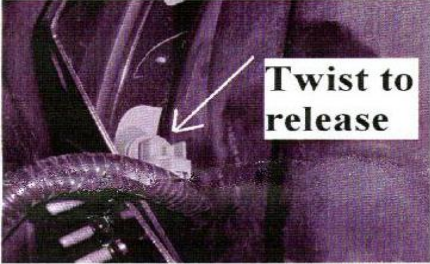
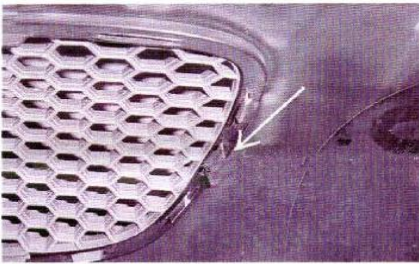
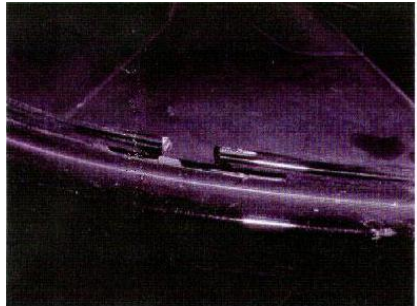
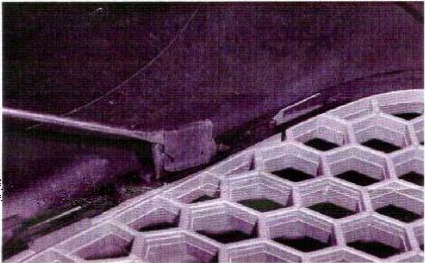
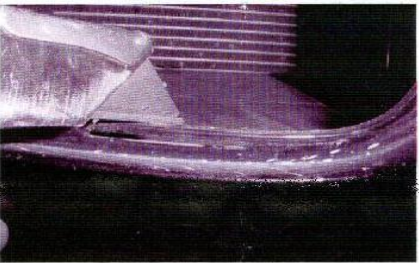


Photo 4

The instruction here is for your reference only. You may need to bend the billet grille bars or tabs a little bit to adjust to fit. We strongly recommend the professional installer for best result.  
Please use masking tape and tape the OEM grille shell along the edge to protect your vehicle during installation.  
We are not responsible for any damage caused by the installation. Thank you for choosing our product!

Part#	GR16GEE45H	Application	06~08 Pontiac Solstice – Stainless Steel Mesh Grille
7	Release the bulbs behind each of the 2 side marker lights by twisting 1/4 turn and pulling the bulb straight out. See photo 5.		
8	Lean the bumper cover forward to access the backside.		
9	Release the metal retaining clips from the backside of each grille insert using a flat screwdriver and / or pliers. There are 4 total. See photos 6 & 7. Remove the 2 grille inserts by pulling them straight out through the front.		
10	Using a sharp utility knife, cut approximately 1/2" out of the center of the 2 lower factory mounting slots. See photos 8 & 9.		
<div style="display: flex; justify-content: space-around; align-items: flex-start;"> <div style="text-align: center;">  <p><b>Twist to release</b></p> <p>Photo 5</p> </div> <div style="text-align: center;">  <p>Photo 6</p> </div> <div style="text-align: center;">  <p>Photo 9</p> </div> </div> <div style="display: flex; justify-content: space-around; align-items: flex-start; margin-top: 10px;"> <div style="text-align: center;">  <p>Photo 7</p> </div> <div style="text-align: center;">  <p>Photo 8</p> </div> </div>			
11	Center one of the mesh panels behind the frame. Insert the frame and mesh into the opening from the front side starting with the upper mounting studs first. They will go through the factory mounting slots.		
12	Ensure that the mesh panel is centered behind the frame. Thread a screw in each nut welded to the grille. From the rear, place a tab on each screw. Now thread a nut on each screw.		
13	Repeat for the other side.		
14	Re-install all bumper cover mounting hardware.		
15	Installation completed!!!		

The instruction here is for your reference only. You may need to bend the billet grille bars or tabs a little bit to adjust to fit. We strongly recommend the professional installer for best result.  
 Please use masking tape and tape the OEM grille shell along the edge to protect your vehicle during installation.  
 We are not responsible for any damage caused by the installation. Thank you for choosing our product!