

PN: GR14GFD77T

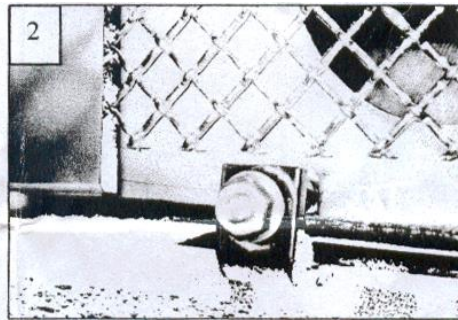
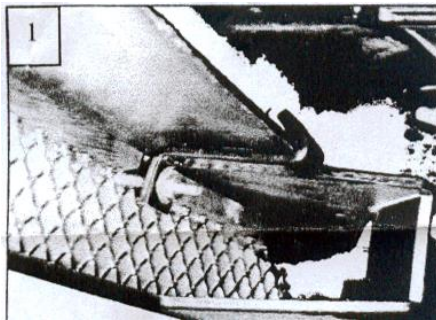
2007 Nissan Altima – Bumper Stainless Steel Mesh Grille

Hardware

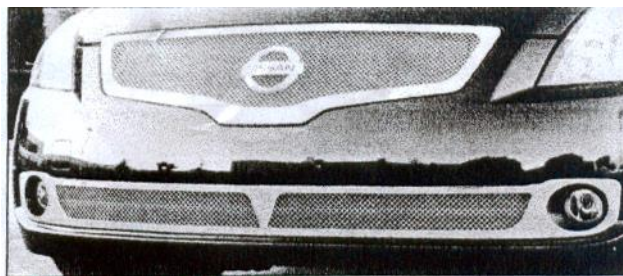
6 -- 6-32 Kep Nuts	6 -- Washers	6 -- 6-32 × 1" Studs
3 -- 1/2" × 1/2" L brackets	3 -- 1.5" J Hooks	

NOTE: Instruction for billet grille also applies to stainless steel grille.

- (1) Remove the factory grille shell to access the rear of the bumper; Use a small screwdriver to pull the center from six fasteners along the top of the grille and bumper cover (these are needed to install the new mesh grille). Next, lightly pull the top of the grille assembly forward; use a slotted screwdriver to depress the clips on each end of the grille. Use your fingers to depress the molded clips along the bottom of the grille; remove the grille.
- (2) Center the grille into the bumper opening. Thread a stud in each nut welded to the grille. Install the longer J hooks along the top (1) and the shorter L brackets along the bottom (2). Secure the brackets using the nuts and washers supplied. Wrap the brackets around the upper and lower edge of the bumper opening (1&2). Tighten the hardware until the grille is held in place.



- (3) Re-install the upper grille onto the vehicle.



The instruction here is for your reference only. You may need to bend the billet grille bars or tabs a little bit to adjust to fit. We strongly recommend the professional installer for best result. We are not responsible for any damage caused by the installation. Thank you for choosing our product!