



PATENT PRODUCT

Grille Installation Instruction

Part#	GR06FFG89C/J/S	Application	For 2009-2014 Ford F-150 (Not For Harley Davidson And Raptor)
--------------	----------------	--------------------	----------------------------------------------------------------------

	Item	Part Name	QTY	Description	Item	Part Name	QTY	Description
Parts List	1	Billet Grille	1	Stainless steel	3	Flange Brackets	2	2"
	2	U-Clip Nuts	2	8#	4	Truss Socket Tapping Screws	2	8#x1"

Install Notes: Overlay Replacement Drill Cut

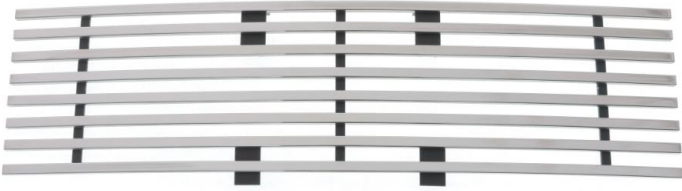
Step	Description	illustration
1	Identify the grille & hardware with parts list.	
2	Remove the factory license plate holder. Next insert the billet grille into the bumper opening. Make sure the side of the billet grille with the two small metal tabs that extend down and away from the grille are on the bottom. (Fig 1) The two tabs will slide into a slot in the plastic on the bottom edge of the bumper opening. (Fig 2)	
3	On the bottom edge of the factory bumper are two metal tabs with holes. With the billet grille inserted into the bumper opening take two #8 screws and put them up through the billet grille tabs and the tabs with holes on the bottom edge of the factory bumper. Use a U-Clip nut secured on the flange bracket on the top side of the bumper tabs and tighten with a phillips screwdriver. (Fig 3)	



Fig 1

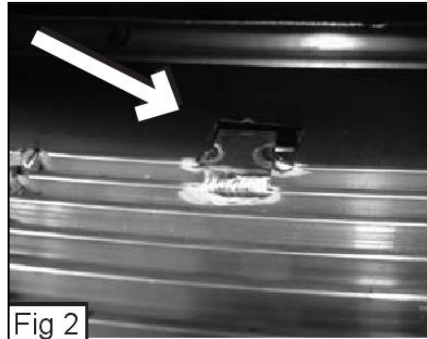


Fig 2

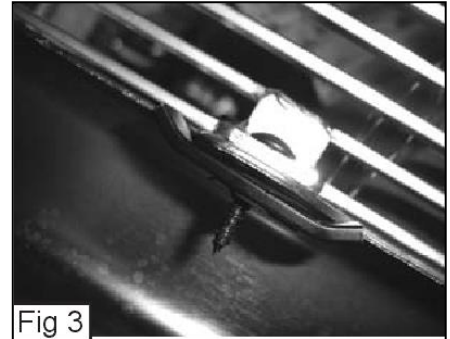


Fig 3

4	Make sure the billet grille is centered and tighten the fasteners. But do not over-tighten.
5	Installation completed!!!

The instruction here is for your reference only. You may need to bend the billet grille bars or tabs a little bit to adjust to fit. We strongly recommend the professional installer for best result. Please use masking tape and tape the OEM grille shell along the edge to protect your vehicle during installation. We are not responsible for any damage caused by the installation. Thank you for choosing our product!