

Grille Installation Instruction

Part#	GR04GF110T	2011-2012 Dodge Charger 1PC Style Main Upper
-------	------------	--

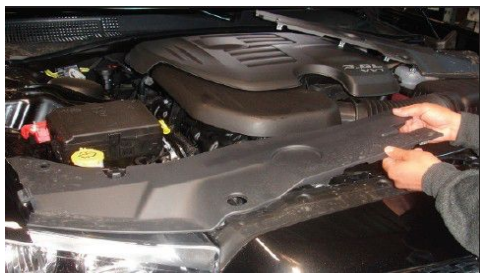
Parts List	Item	Part Name	QTY	Description	Item	Part Name	QTY	Description
	1	Mesh Grille	1	Stainless steel	4	Lock Nut	8	6-32
	2	Stud	4	6-32×3"	5	Flat Washer	4	Φ25×Φ5×1
	3	Stud	4	6-32×1"	6	Flange Bracket	4	

Install Notes: Overlay Replacement Drill Cut

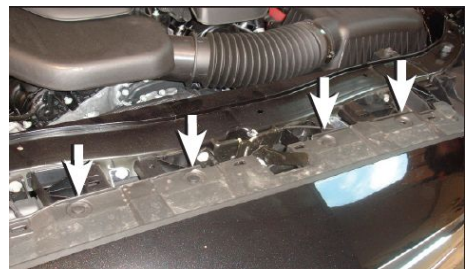
Installation

Step 1 Identify the grille insert & hardware with parts list

N/A

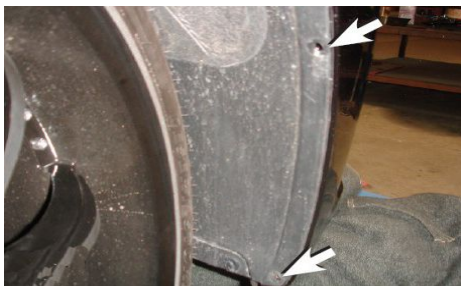


Step2-1: Pop hood, Remove 2 Plastic Covers above the Factory Grille Shell.



Step2-1: Remove 4 Clips along the Factory Grille Shell.

Step 2:
Factory Grille
Shell Removal



Step2-3: Remove 2 Clips along the Fender.



Step2-4: Use a Plastic Prybar to separate the Fender Cover from Bumper Shell and remove 10mm Bolt.



Step2-5: On each end, Clips secure the side bumper. Carefully pull the side bumper outward to release clips.



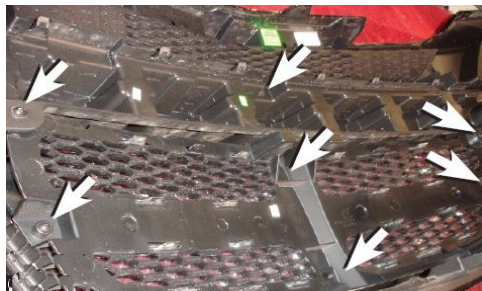
Step2-6: Remove 6 Bolts along the bottom of the Bumper Shell.

The instruction here is for your reference only. You may need to bend the grille a little bit to adjust to fit. We strongly recommend the professional installer for best result. We are not responsible for any damage caused by the installation. Thank you for choosing our product!

Part#	GR04GF110T	2011-2012 Dodge Charger 1PC Style Main Upper
-------	------------	--



Step2-7:Remove factory grille and bumper (grille and bumper are connected together)

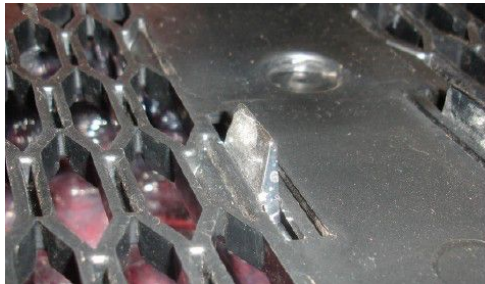


Step3-1: Remove 6 Screws from around the Factory Grille and 1 Screw on the Bumper Support.



Step3-2:Remove Bumper Support.

Step 3: Grille Removal



Step3-3:Unclip 16 clips from around the Factory Grille.



Step3-4: Remove Factory Grille.

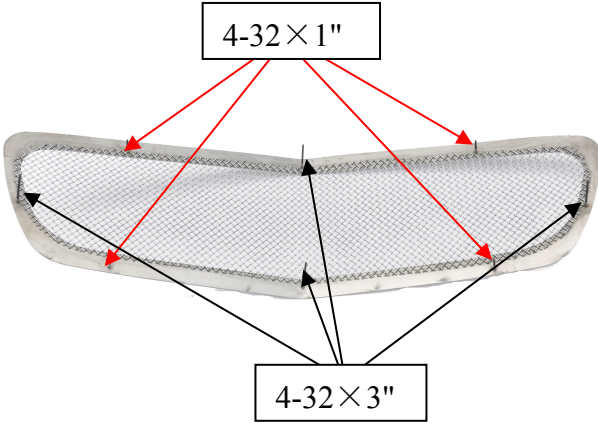





Step3-5:Unclip 8 Clips from around the OEM Grille Shell and remove (OEM Grille Shell will come out from front).

Step3-6: Unclip the Dodge Logo on the Factory Grille.

The instruction here is for your reference only. You may need to bend the grille a little bit to adjust to fit. We strongly recommend the professional installer for best result. We are not responsible for any damage caused by the installation. Thank you for choosing our product!

Grille Installation Instruction

Part#	GR04GF110T	2011-2012 Dodge Charger 1PC Style Main Upper
Step 4: Grille Installation	 <p><u>Step4-1: Secure the sud to the threaded holes on the rear of the grille.</u></p>	<p><u>Step4-2: Center the grille into the opening of the factory grille shell, Be sure the studs are through the OEM grille shell.</u></p>
	 <p><u>Step4-3: On the 4 short studs on the Grille Shell, Insert Flange Brackets to so it latches onto the Factory Grille Shell and thread a Lock Nut in Place.</u></p>	 <p><u>Step4-4: Place back the Factory Grille over the Grille Shell.</u></p>
	 <p><u>Step4-5: Place 4 Flat washers Around the Threaded Screws on the Grille Shell and thread Lock Nuts in Place.</u></p>	<p><u>Step4-6: Place back the Bumper Filler and re-install the 3 Screws along the bottom of the Factory Grille.</u></p>
	<p><u>Step4-7: Re-Assemble Bumper Support, Clips and bolts.</u></p>	

The instruction here is for your reference only. You may need to bend the grille a little bit to adjust to fit. We strongly recommend the professional installer for best result. We are not responsible for any damage caused by the installation. Thank you for choosing our product!

Part#	GR04GF110T	2011-2012 Dodge Charger 1PC Style Main Upper
-------	------------	--

Installation completed!!



The instruction here is for your reference only. You may need to bend the grille a little bit to adjust to fit. We strongly recommend the professional installer for best result. We are not responsible for any damage caused by the installation. Thank you for choosing our product!