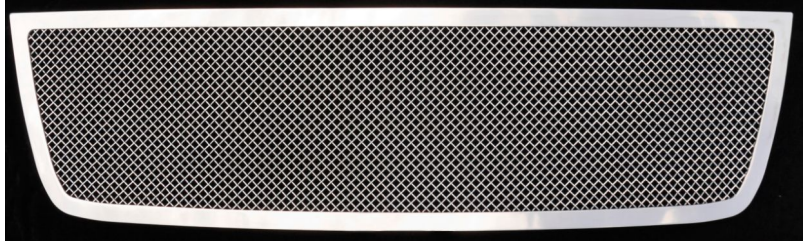


Part#	GR03GFE76T	Application	<b>05-06 Chevrolet Silverado Heavy Duty 2500/3500 – Upper Class Mesh Grille</b>					
-------	------------	-------------	---	--	--	--	--	--

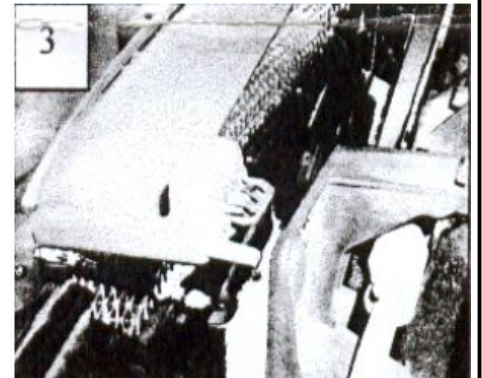
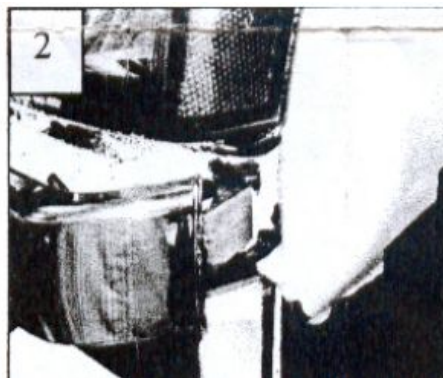
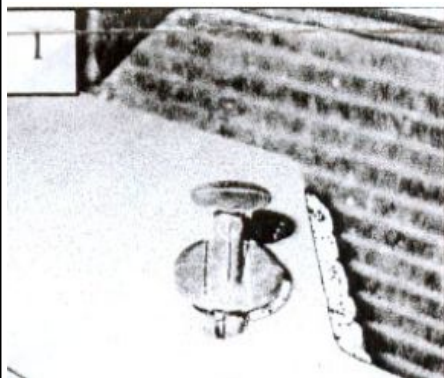
Parts List	Item	Part Name	QTY	Description	Item	Part Name	QTY	Description
	1	Mesh Grille	1	Stainless steel	4	Phillips Screws	6	#8×3/4
	2	Studs	2	6-32×1"	5	Billet End Caps (1 left & 1 right)	2	
	3	Flat Nuts	6	8#	6	Nylon Lock Nuts	2	6-32

Install Notes: Overlay  Replacement  Drill  Cut

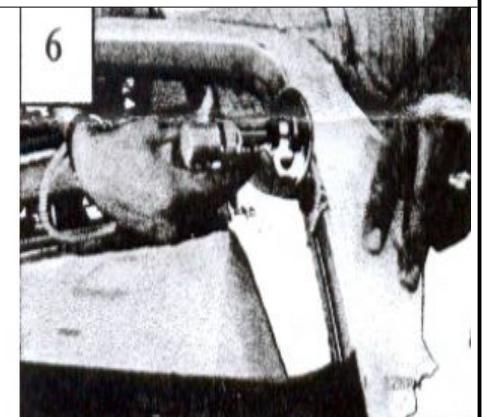
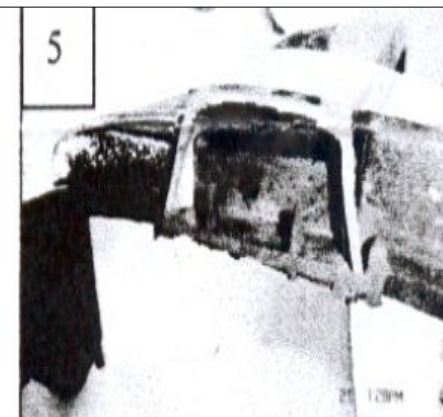
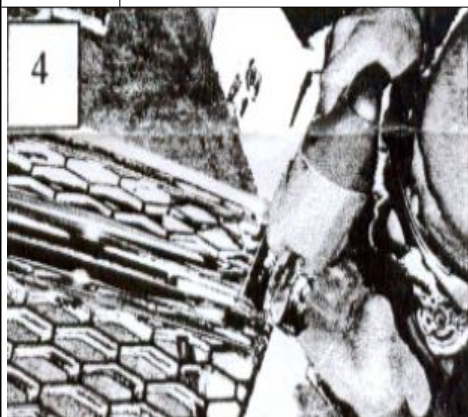
Step	Description	illustration
------	-------------	--------------

1	Identify the grille & hardware with parts list.	
---	---	--

2	Apply masking tape to the chrome and painted areas to prevent scratching. Remove the plastic radiator cover fasteners (1). Release the headlight retaining rod to loosen the headlights. Pull the ends of the grille forward to release the metal clips (2). Now release the metal clips next to the headlights and signal lights (3). Remove the grille.	
---	---	--



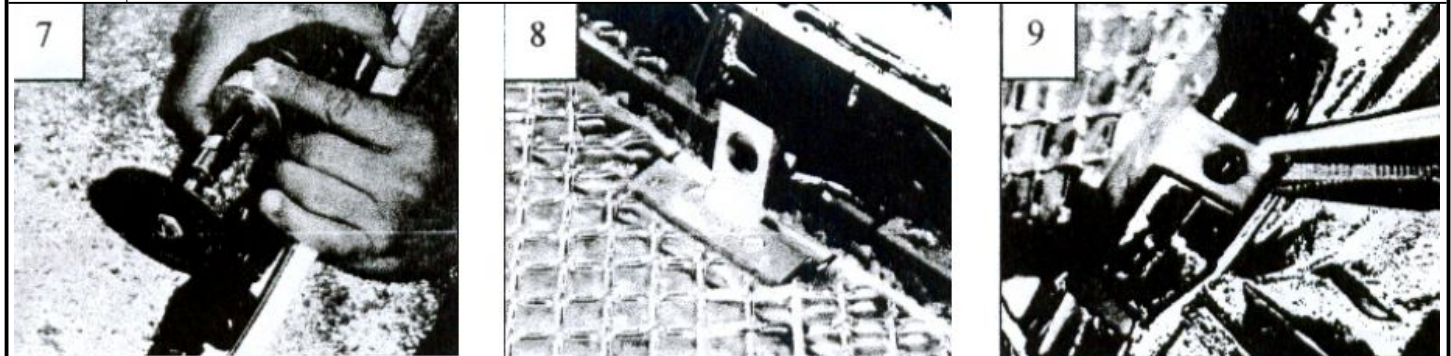
3	Place the grille face up on a work-table. Cut the center mesh along the top and bottom openings; make your cut at the base of the mesh (4). Continue the cuts down the grille across the chrome bar as shown (5). Make your cut in line with the grille opening; draw a guide-line using a marker. File or sand your cuts smooth (6).	
---	---	--



The instruction here is for your reference only. You may need to bend the grille a little bit to adjust to fit. We strongly recommend the professional installer for best result. We are not responsible for any damage caused by the installation. Thank you for choosing our product!

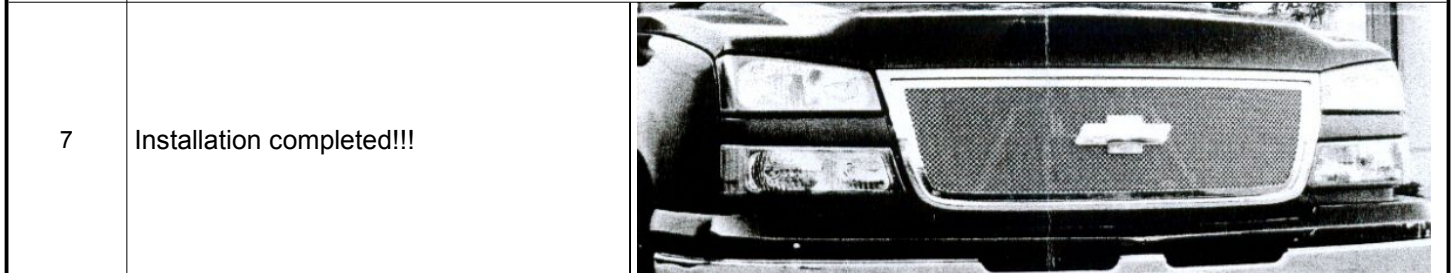
Part#	GR03GFE76T	Application	<b>05-06 Chevrolet Silverado Heavy Duty 2500/3500 – Upper Class Mesh Grille</b>
-------	------------	-------------	---

4 Test fit the grille in place. The mounting tabs align to the inner perimeter of the opening. It is necessary to cut or file the inner mesh smooth so each tab seats flush to the plastic (7&8). Center the grille into the opening. Use vise grip pliers to hold the grille in place at the mounting tabs (9). Drill a 1/8" hole into the plastic at each mounting hole. Use the screws and flat nuts to secure the grille. Slide the billet end caps over the cuts on the cross bar (7). The billet end caps have a 6-32 hole tapped on the back. Drill a 5/32" hole into the plastic; align with the hole in the caps. Use the 6-32 studs and nuts to secure the caps.



5 Make sure the billet grille is centered and tighten the fasteners.

6 Re-install the grille assembly back onto the vehicle.



The instruction here is for your reference only. You may need to bend the grille a little bit to adjust to fit. We strongly recommend the professional installer for best result. We are not responsible for any damage caused by the installation. Thank you for choosing our product!