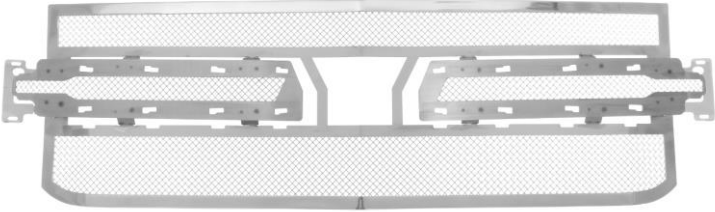


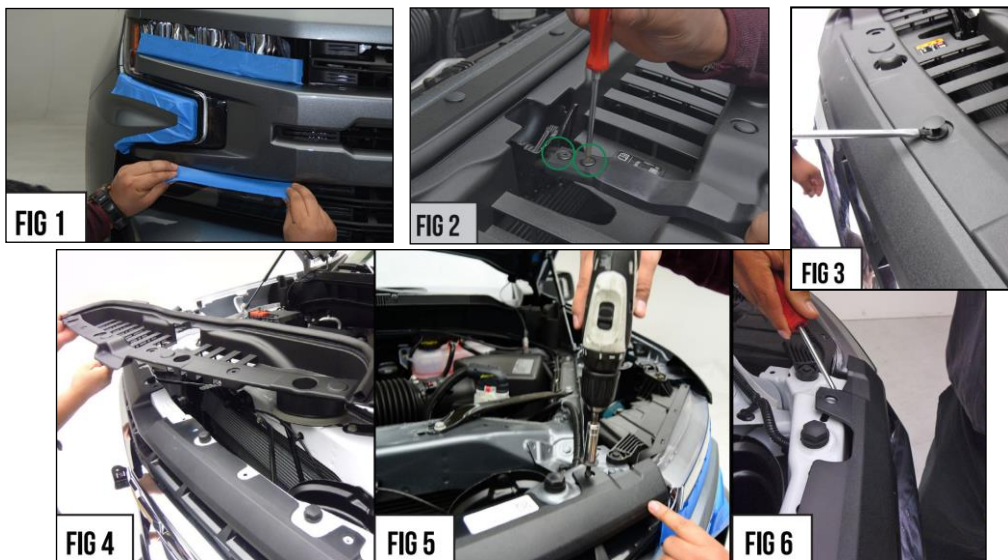
Grille Installation Instruction

Part#	GR03GEE55 T/H	<i>Application</i>	For 2019-2020 Chevy Silverado 1500 Main Upper Not for Custom Trailboss/Custom/Work Truck
--------------	--------------------------	--------------------	---

Parts List	Item	Part Name	QTY	Description	Item	Part Name	QTY	Description
	1	Mesh Grille	1	Stainless steel	5	Left Top Plate	1	
	2	Flange Nuts	12	10#	6	Right Top Plate	1	
	3	Small Fastener Retaining Clips	16		7	Bottom Plate	1	
	4	Large Black Fasteners	3		8	Square Aluminum Spacers	2	

Install Notes: Overlay Replacement Drill Cut

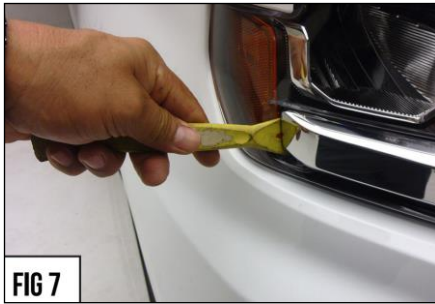
Step	Description	illustration
1	Identify the grille & hardware with parts list.	
2	Turn off engine, chalk tires with stop block, open the hood and disconnect the battery. Prepare the vehicle by setting a protective layer of Blue Masking Tape (3M Painters Tape or similar) over the head lamps, grille cross bar, and along the lower bumper that is in close proximity to the grille.(Fig 1)	
3	The OEM Factory Grille will have to be removed. Begin grille removal unscrewing the Hood release latch handle. (Fig 2)	
4	Next, begin prying free all the Push Pin Retainer Clips and remove the radiator cover. With the Radiator Panel Cover removed, Identify and remove the screws that secure the top trim / grille frame. Pry the trim piece up and off the core support lip. (Fig 3-6)	



The instruction here is for your reference only. You may need to bend the grille a little bit to adjust to fit. We strongly recommend the professional installer for best result. We are not responsible for any damage caused by the installation. Thank you for choosing our product!

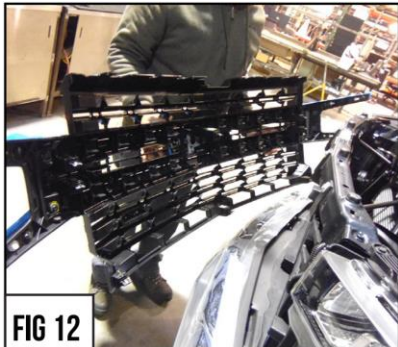
Part#	GR03GEE55 T/H	Application	For 2019-2020 Chevy Silverado 1500 Main Upper Not for Custom Trailboss/Custom/Work Truck
--------------	--------------------------	--------------------	---

- 5 Remove Vehicle's Grille Cross Bar by carefully prying on the end "finger piece". Note the protective layer of masking tape in Figures #8 & #9. (Fig 7-9)
- 6 Work the prying tool towards the center. Figure #9b shows the plastic fastener on the inside of the cross bar. (Fig 8-9)
- 7 Repeat on opposite side.



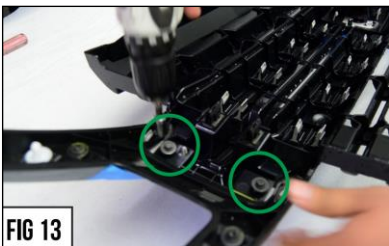
- 8 Before you can separate the Vehicle's Grille Assembly, you must pry off the retainer clips located behind grille near bottom corners. Use a long prying tool with a large broad edge to depress and pop free from fastener. (Fig 10-11)

- 9 With the OEM Grille free and removed from vehicle, place face down on a padded surface. (Fig 12)



- 10 Begin OEM Grille disassembly by separating the OEM Grille from the Silverado Cross Bars. You may want to have a helper hold & secure the grille for disassembly. From the backside, remove the screws as seen in Figure 13. Carefully pry the plastic clips away and off of the OEM Grille as seen in Figure 14. Save the screws to be re-used during Step 18. (Fig 13-14)

- 11 The OEM Grille should now be free to remove. Set aside. This piece will not be used or needed to mount the Grille. Keep the Silverado Cross Bar and prepare the new Grille for mounting by installing the provided Bracket Mounts included in the hardware pack. (Fig 15)

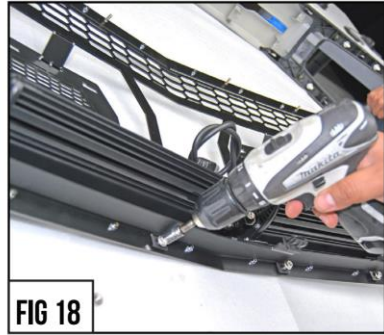
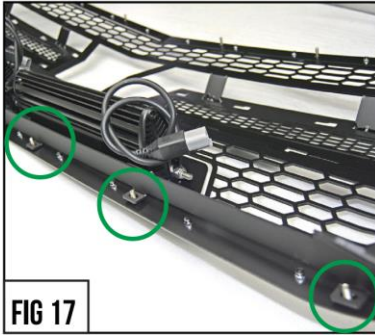


The instruction here is for your reference only. You may need to bend the grille a little bit to adjust to fit. We strongly recommend the professional installer for best result. We are not responsible for any damage caused by the installation. Thank you for choosing our product!

Part#	GR03GEE55 T/H	Application	For 2019-2020 Chevy Silverado 1500 Main Upper Not for Custom Trailboss/Custom/Work Truck
--------------	--------------------------	--------------------	---

12 Take the provided Bottom Mounting Plate and position it onto and over the new Grille's pre-determined mounting provisions as seen in Figure 17. It can only be mounted one way. (Fig 16-18)

13 Use the provided Flange Nuts to secure in place. (Fig 18)



14 Put into place the Top Mounting Plates and secure with the provided Flange Nuts. There is a Right Top Mounting Plate and a Left Top Mounting Plate. They can only be mounted one way as seen in Figure 20. (Fig 19-20)

15 Take Silverado Cross Bar and place face down on a padded surface. Take the Grille and position over and onto the Silverado Cross Bar. (Fig 21)






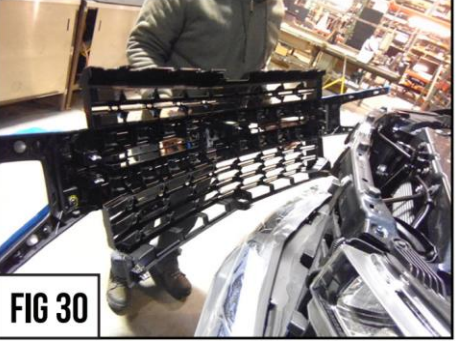


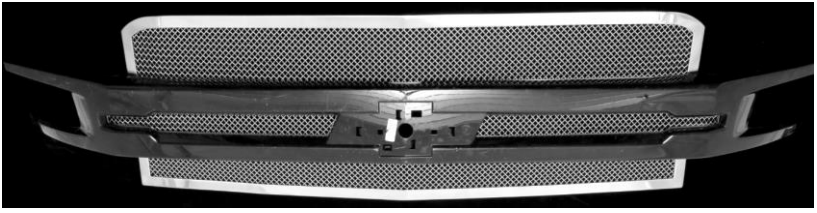
16 Make certain to properly align center of Grille with OEM Silverado Cross Bar. Note the clear defined center point of both are matched up. (Fig 22)

17 The Silverado Cross Bar plastic tabs should all be protruding through the Grille's pre-determined mounting provisions. (Fig 23)

18 Take one Aluminum Spacer and put into place near top corner and between Grille and Silverado Cross Bar. Repeat on opposite side Insert Screws into place and secure Grille to Silverado Cross Bar. Screws were removed and should have been saved back during Step 10. Bottom Corners will not require Spacers nor are any provided. (Fig 24-26)



The instruction here is for your reference only. You may need to bend the grille a little bit to adjust to fit. We strongly recommend the professional installer for best result. We are not responsible for any damage caused by the installation. Thank you for choosing our product!

Part#	GR03GEE55 T/H	Application	For 2019-2020 Chevy Silverado 1500 Main Upper Not for Custom Trailboss/Custom/Work Truck
19	With the 4 screws holding the grille in place and the Grille properly aligned, put the provided Small Fastener Retaining Clips into place as seen in Figure 27 and also highlighted in Figure 23. (Fig 27-28)		
20	There should be three large black fasteners already assembled to the Bottom Mounting Bracket. Confirm they are properly installed. Grille Assembly is complete. (Fig 29)		
 <p>FIG 27</p>	 <p>FIG 28</p>	 <p>FIG 29</p>	
21	Carefully inspect your work regarding the Grille installed on the Vehicle's OEM Grille.		
22	Take the assembled grille component and put into place to install onto vehicle. Re-install in the reverse order from which it was removed. Start at the bottom and work your way up. Re-install the radiator cover & Hood Latch Handle too.(Fig 30-32)		
 <p>FIG 30</p>	 <p>FIG 31</p>	 <p>FIG 32</p>	
23	Carefully inspect your work and make certain all vehicle panels have been installed and align correctly as factory fitment.		
24	Installation completed!!!		

The instruction here is for your reference only. You may need to bend the grille a little bit to adjust to fit. We strongly recommend the professional installer for best result. We are not responsible for any damage caused by the installation. Thank you for choosing our product!