
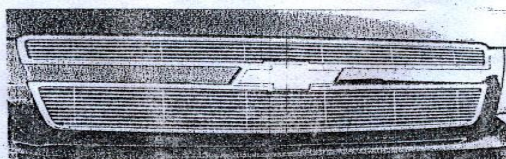
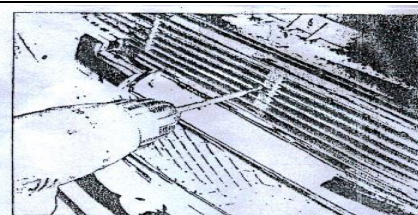
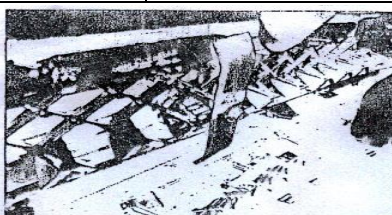
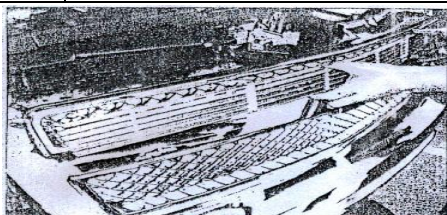


Part#	GR03FGI19 S	Application	<i>For 2007-2014 Chevy Avalanche /2007-2014 Chevy Suburban /2007-2014 Chevy Tahoe Not For Hybrid</i>
--------------	------------------------	--------------------	--

Parts List	Item	Part Name	QTY	Description	Item	Part Name	QTY	Description
	1	Billet Grille	2	Stainless steel	3	Truss Head Screws	8	6-32 × 2 "
	2	Lock Nuts	8	6-32				

Install Notes: Overlay Replacement Drill Cut

Step	Description	illustration
1	Identify the grille & hardware with parts list.	
2	Pop hood, remove the black plastic cover (on top of OEM grille / front panel) from vehicle. This will allow access to the rear of the grille shell.	
3	Center the billet grille into the opening of the factory grille shell. Secure the bolt to the threaded holes on the front of the grille. Be sure the bolts are through the OEM grille shell.	
4	Secure billet grille using the lock nuts from the back side of the OEM grille shell.	
5	Make sure the billet grille is centered and tighten the fasteners. but do not over-tighten.	
6	Reinstall the black plastic cover which was removed in step 2.	
7	Installation completed!!!	N/A



The instruction here is for your reference only. You may need to bend the billet grille bars or tabs a little bit to adjust to fit. We strongly recommend the professional installer for best result. Please use masking tape and tape the OEM grille shell along the edge to protect your vehicle during installation. We are not responsible for any damage caused by the installation. Thank you for choosing our product!



Grille Installation Instruction

Rev. 150116

Part#	GR03FGI1 9S	Application	For 2007-2014 Chevy Tahoe Not For Z71/ Hybrid Model For 2007-2014 Chevy Avalanche Not For Z71 Model For 2007-2014 Chevy Suburban Not For Z71 Model
--------------	------------------------	--------------------	---

Parts List	Item	Part Name	QTY	Description	Item	Part Name	QTY	Description
	1	Billet Grille	2	Stainless steel	3	Flat Nuts	6	8#
	2	Phillips Screws	6	#8×3/4"				

Install Notes: Overlay Replacement Drill Cut

Step	Description	illustration
1	Identify the grille & hardware with parts list.	N/A
2	Pop hood, remove the black plastic cover (on top of OEM grille / front panel) from vehicle. This will allow access to the rear of the grille shell.	N/A
3	Center one of the grilles in place. Mark the mounting tabs to the tow hook opening. Re-center the grille. Double check the marks to the mounting tabs. Remove the billet and drill a 1/16" hole at each mark.	N/A
4	Secure billet grille using the k-lock nuts from the back side of the OEM grille shell.	N/A
5	Make sure the billet grille is centered and tighten the fasteners.but do not over-tighten.	N/A
6	Reinstall the black plastic cover which was removed in step 2.	N/A
7	Installation completed!!!	N/A

The instruction here is for your reference only. You may need to bend the billet grille bars or tabs a little bit to adjust to fit. We strongly recommend the professional installer for best result. Please use masking tape and tape the OEM grille shell along the edge to protect your vehicle during installation. We are not responsible for any damage caused by the installation. Thank you for choosing our product!