

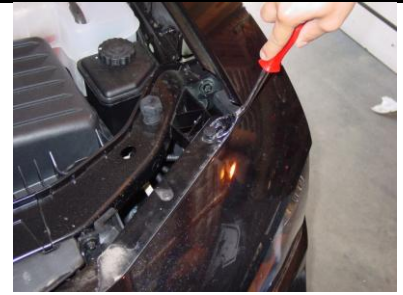


Read complete instructions
before installation!
Improper installation may
void warranty

Description: Head Light

Part Number: 121217-121218

Application: 2006-2008 Dodge Charger



Tools needed: Phillips screwdriver, flat head screwdriver, T27 torx socket, 10mm socket, 7mm socket, wire splicer, electrical tape

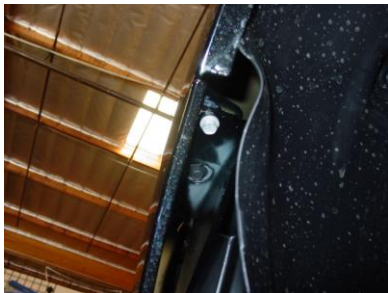
Step 1: Use the flat head screw driver to remove the five push pins located at the top of the bumpers.



Step 2: Use the 10mm socket to remove the bolt located under the top fender.

Step 3: Remove the five push pins located in the front tire well.

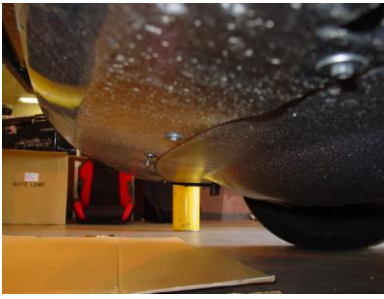
Step 4: Use the flat head screwdriver to remove the push pin located in the front tire well.



Step 5: Use the 10mm socket to remove the bolt located behind the wheel well tire shroud.

Step 6: Remove the 10mm bolt located inside the fender behind the headlight housing.

Step 7: Remove the two 7mm bolts under the tire wheel well.



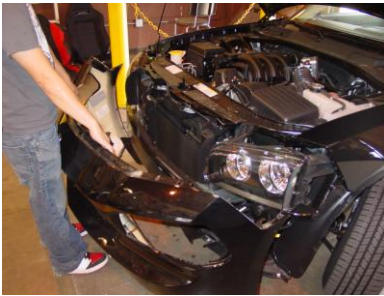
Step 8: Remove the six 7mm bolts under the front bumper.



Step 9: Remove the corner light bulb assembly



Step 10: Remove the corner light bulb from the assembly.



Step 11: Remove the bumper from the vehicle.



Step 12: Use the T27 torx to remove the outer corner bolt.



Step 13: Use the T27 torx to remove the inner corner bolt.



Step 14: Remove the bottom bolt on the headlight unit.



Step 15: Remove the original headlight from the vehicle.



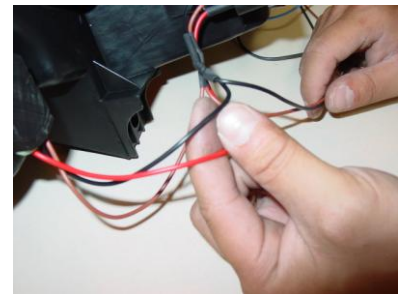
Step 16: Unplug the main wire harness.



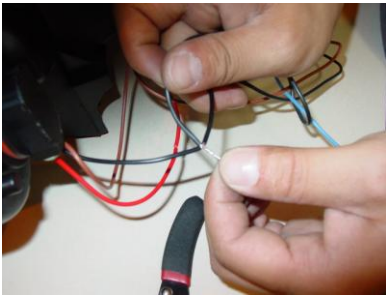
Step 17: Remove the high and low beam connectors.



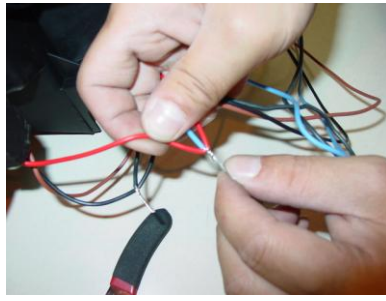
Step 18: Remove the corner light bulb assembly.



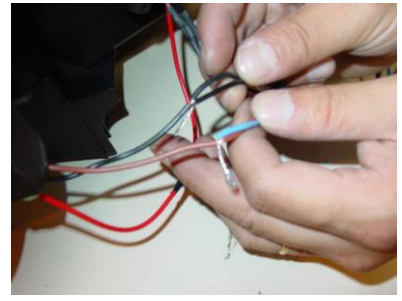
Step 19: Locate the red and black wire on the new headlight to the parking lights.



Step 20: Strip back loose black wires and splice into the black wire going into the headlight.



Step 21: Strip back loose blue wires and splice into the red wire going into the headlight.



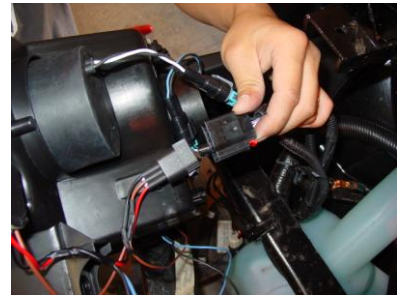
Step 22: This is how it will look like and electrical tape both ends separately.



Step 23: Plug in the low beam harness.



Step 24: Plug in the high beam harness.



Step 25: Plug in the main wire harness.



Step 26: Reverse the installation of the headlights.



Step 27: Test all functions before driving.



AnzoUSA™ products are covered, by a limited one (1) year warranty, to be free of manufacturers' defects. However, certain AnzoUSA™ product categories have warranty policies which differ from this standard, please contact your representative for detailed category information. Damage due to improper installation or road hazards is not covered. Seller and manufacturers' only obligations shall be to replace the product proven to be defective. Neither seller nor manufacturer shall be liable for any injury, loss or damage, direct or consequential, arising out of the use of or the inability to use the product. Before using, user shall determine the suitability of the product for its intended use, and user assumes all risk and liability whatsoever in connection therewith.