

'09-'19 DODGE RAM 1500  
'10-'18 DODGE RAM 2500/3500  
**TOTAL STEPS: 15**



**STEP 1**  
LOCATE THE EIGHT PUSH PINS LOCATED AT TOP OF THE GRILL AND REMOVE THEM. REMOVE RADIATOR SHROUD AND SET ASIDE.



**STEP 2**  
LOCATE THE TWO 10MM FENDER SCREWS AND REMOVE THEM.



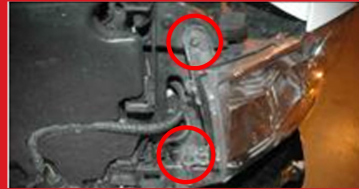
**STEP 3**  
PULL BACK THE WHEEL WELL COVER TO EXPOSE THE SINGLE 10MM BOLT AND REMOVE IT.



**STEP 4**  
PULL OFF THE FRONT BOTTOM BODY SHROUD.



**STEP 5**  
LOCATE THE TWO BOTTOM PINS TO REMOVE THE GRILLE FROM THE TRUCK.



**STEP 6**  
REMOVE THE TWO 10MM BOLTS HOLDING IN THE HEADLIGHT.



**STEP 7**  
PULL BACK THE WHEEL WELL COVER AND LOCATE THE WHITE LOCKING PIN AND PULL DOWN TO RELEASE THE LOCK.



**STEP 8**  
REMOVE THE HEADLIGHT ASSEMBLY FROM THE TRUCK.



**STEP 9**  
TWIST OFF THE PARKING BULB AND DISCONNECT THE HEADLIGHT WIRE HARNESS. UNCLIP THE PARKING BULB FROM WIRE HARNESS.



**STEP 10**  
LOCATE PROVIDED INITIATION WIRE HARNESS IN HEADLIGHT BOX.



**STEP 11**  
CONNECT FORK SPADE CONNECTOR TO POSITIVE(+) TERMINAL ON BATTERY AS SHOWN IN NEXT STEP.



**STEP 12**  
(NOT ACTUAL VEHICLE PICTURE)  
CONNECT FORK SPADE CONNECTORS TO CIRCLED POSITIVE(+) TERMINAL ON BATTERY.



**STEP 13**  
USE PROVIDED ZIP TIES TO ROUTE AND SECURE HARNESS ALONG THE PANEL IN ENGINE BAY AS SHOWN.



**STEP 14**  
CONNECT THE INITIATION HARNESS CONNECTOR SHOWN ABOVE TO BOTH HEADLIGHTS.



**STEP 15**  
TEST ALL FUNCTIONS OF HEADLIGHT BEFORE DRIVING ON THE ROAD.