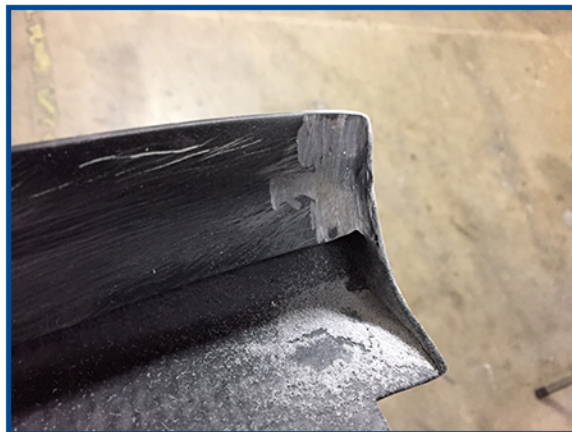




1: Preceding the installation of your Anderson Composites Rocker Panels; the contour of your Anderson Composites Rocker Panels may not exactly follow the body lines of your vehicle. The carbon fiber is designed to conform through the installation process to ensure a proper fit. The installation of your Anderson Composites Rocker Panels require modifying (drilling holes) in your O.E. side rocker panels for a secure installation. **You will not be able to remove your Anderson Composites Rocker Panels without the presence of visible alterations from the installation process.*

2. Remove OE rocker panels from car; use special plastic panel removal tool, take your time and use caution not to damage OE rocker panel or OE fasteners.

3. With the OE rocker panels removed from the car; test fit the Anderson Composites Rocker Panels by holding them or clamping them tight against the OE rocker panels. Inspect inside fitment of carbon fiber rockers with the ends of OE rocker panel. You may need to sand lightly to improve fitment on both ends.



4. Clamp carbon fiber rocker to OE rocker panel, place clamps at each end and approximately every 12".



5. Drill your first 1/8" hole through the inside of your OE rocker panel near the end of the Rocker panel closest to the front tire. You should only drill your hole through the OE Rocker panel and inside panel of your Anderson Composites Side Rocker. It is not necessary to drill through the outside (exposed weave); doing so will result in an unsightly exposed hole.

