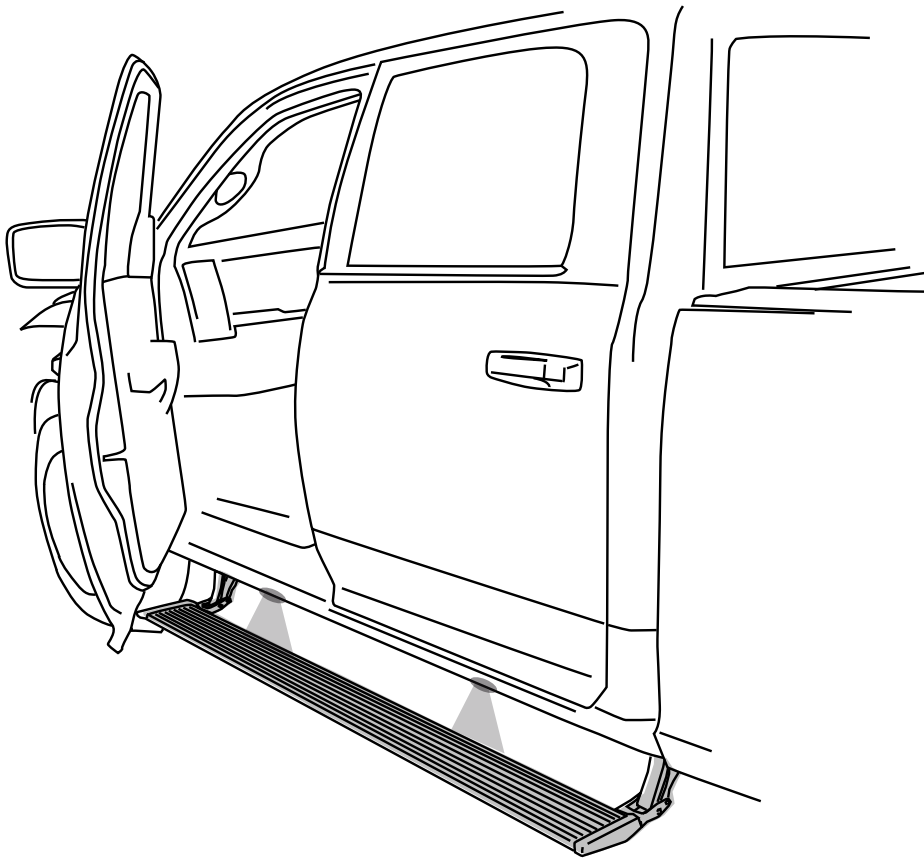


AIR TANK & COMPRESSOR RELOCATION BRACKETS

AMP RESEARCH **Power Step** MADE IN USA

APPLICATION		MODEL YR	PART #
Dodge Ram Crew Cab	2500/3500	2014 - 2015	79101-01A
Dodge Ram Mega Cab	2500/3500	2014 - 2015	79102-01A



INSTALLATION TIME

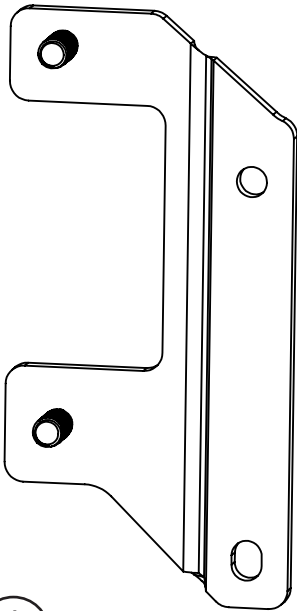
.5-1 Hours

Professional installation recommended

TOOLS REQUIRED

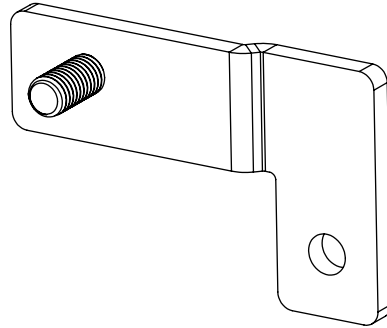
- Safety goggles
- 13mm wrench
- 13mm socket
- Ratchet wrench and extension

Invented, engineered and manufactured exclusively by AMP Research in the USA. May be covered by one of the following patents: 6,641,158; 6,830,257; 6,834,875; 6,938,909; 7,055,839; 7,380,807; 7,398,985; 7,584,975 ©2012 AMP Research. All rights reserved. Printed in USA.



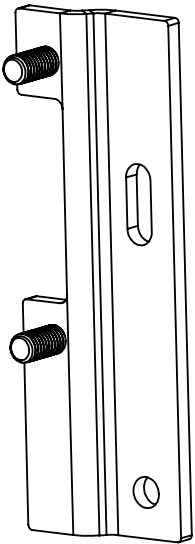
1

15-04032-90
Front Tank
Bracket



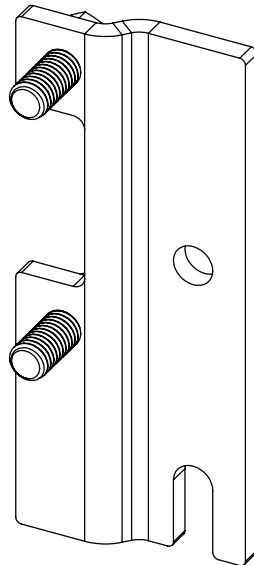
2

15-04033-90
Rear Tank Bracket



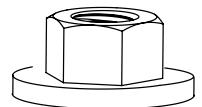
3

15-04059-90
Front Compressor
Bracket (Only used on
79102-01A)



4

15-04060-90
Rear Compressor
Bracket (Only used on
79102-01A)

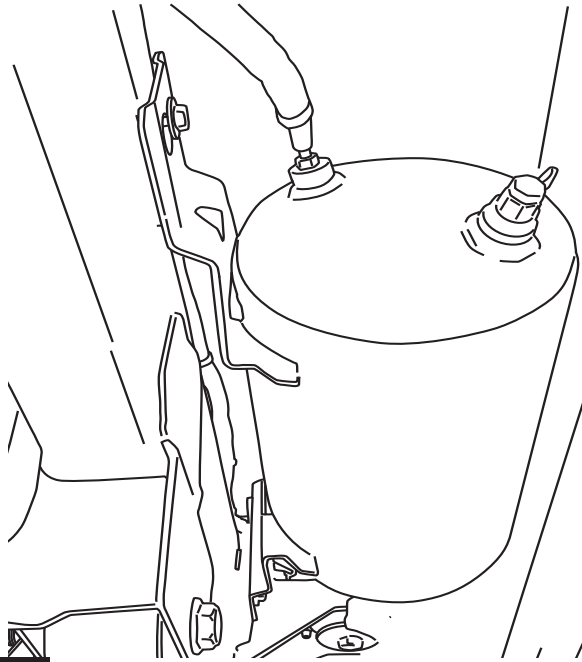


5 x7

19-03356-90
M8 Nut

Steps 1-4 are for PN 79101-01A & 79102-01A

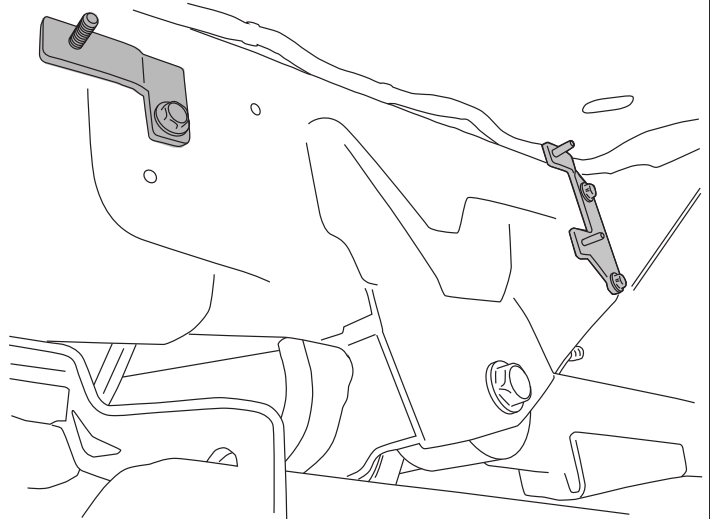
Locate Air Tank and remove three bolts holding the tank to the frame using a 13mm socket or wrench



1



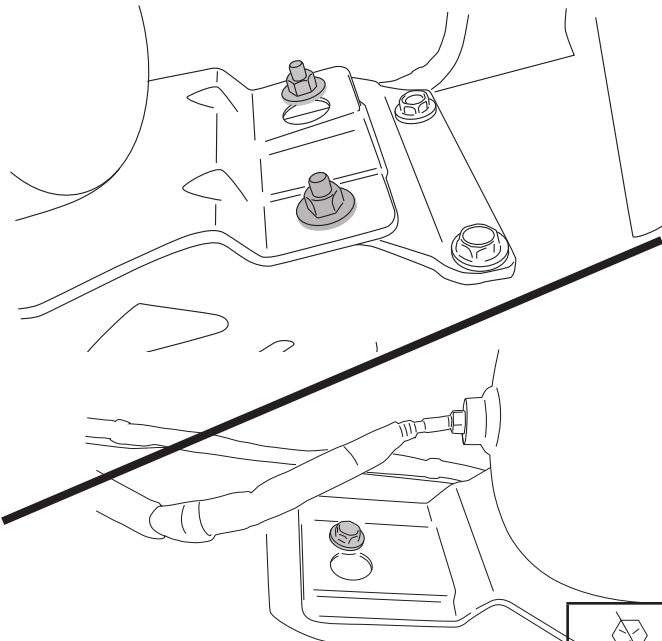
Mount Front and Rear Bracket using hardware removed from step 1.



2



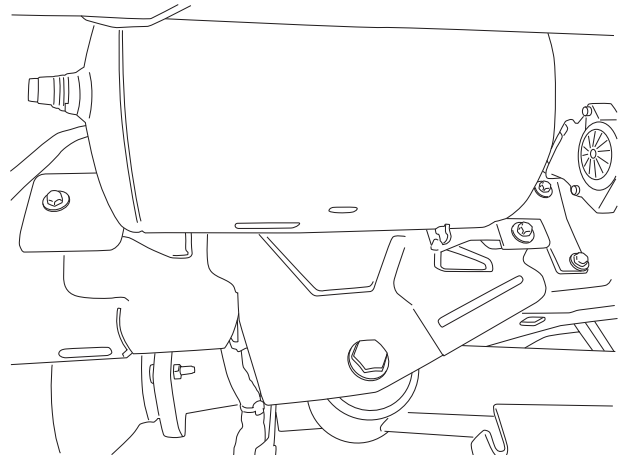
Set tank into position and tighten 3 nuts holding tank to relocation brackets.



3



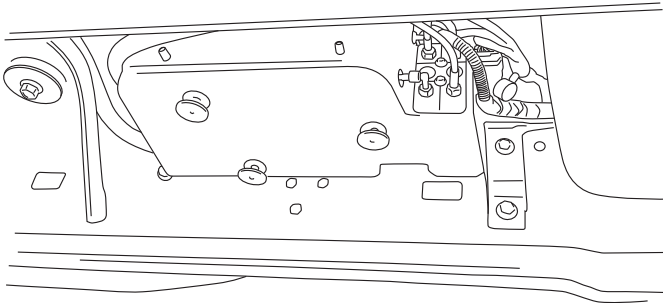
Tank mounted and relocated.



4

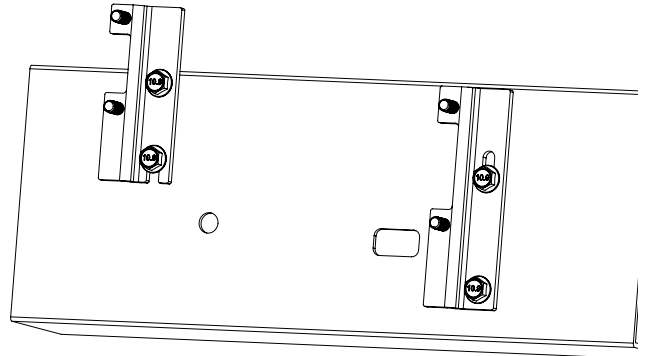
Steps 5-7 are for PN 79102-01A

Locate Compressor and remove four bolts holding the Compressor to the frame using a 13mm socket or wrench.

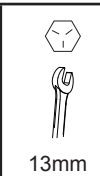


5

Mount Front and Rear Bracket using hardware removed from step 5.

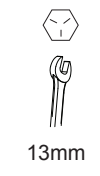
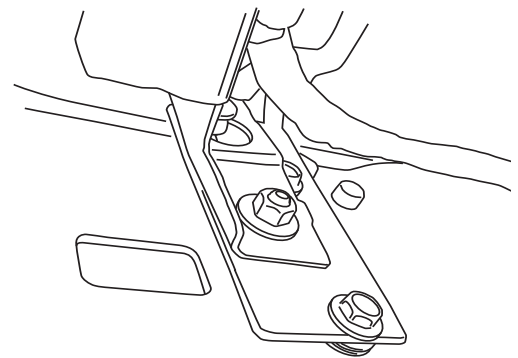
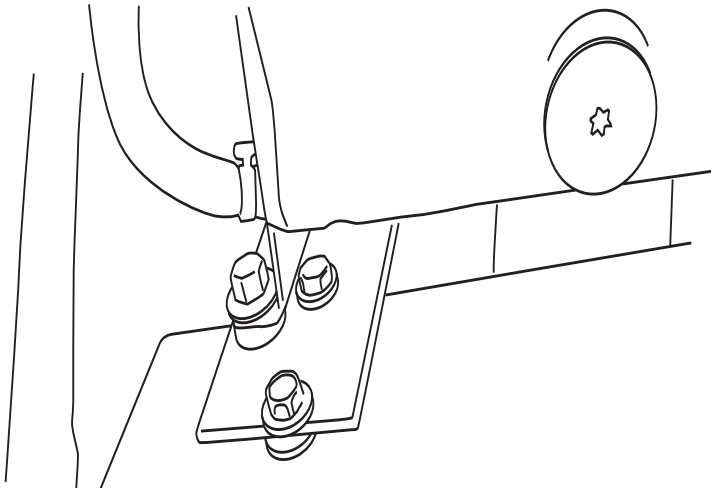


6



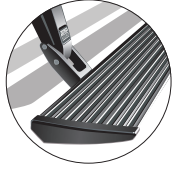
13mm

Set Compressor into position and tighten 4 nuts holding Compressor to relocation brackets.



13mm

POWER-DEPLOYABLE RUNNING BOARDS OPERATION: AMP Research PowerStep [running boards](#) automatically move when the doors are opened to assist entering and exiting the vehicle.



Automatic power deploy:

The running boards will extend down and out when the doors are opened.

Automatic power stow:

The running boards will return to the stowed position when the doors are closed. There will be a 2-second delay before the running boards move to the stowed position.

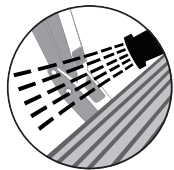
Automatic stop:

If an object is in the way of the moving running board, the running board will automatically stop. To reset, clear any obstruction, then simply open and close the door to resume normal operation.



Manually set in the deployed (OUT) position for access to the roof:

The running boards can be manually set in the deployed position by firmly holding the step down with your foot while at the same time closing the door. To resume normal operation, open and close the door.



Maintenance: In adverse conditions, debris such as mud, dirt, and salt may become trapped in the running board mechanism, possibly leading to unwanted noise. If this occurs, manually set the running boards to the deployed position and flush the front and rear hinge arms with a high-pressure car wash wand. Avoid spraying the motors directly. After washing, apply silicone spray lubricant to the hinge pivot pins. Do not apply silicone, wax or protectants like Armor All® to the running board stepping surface.

Caution! Keep hands away when the running board is in motion.