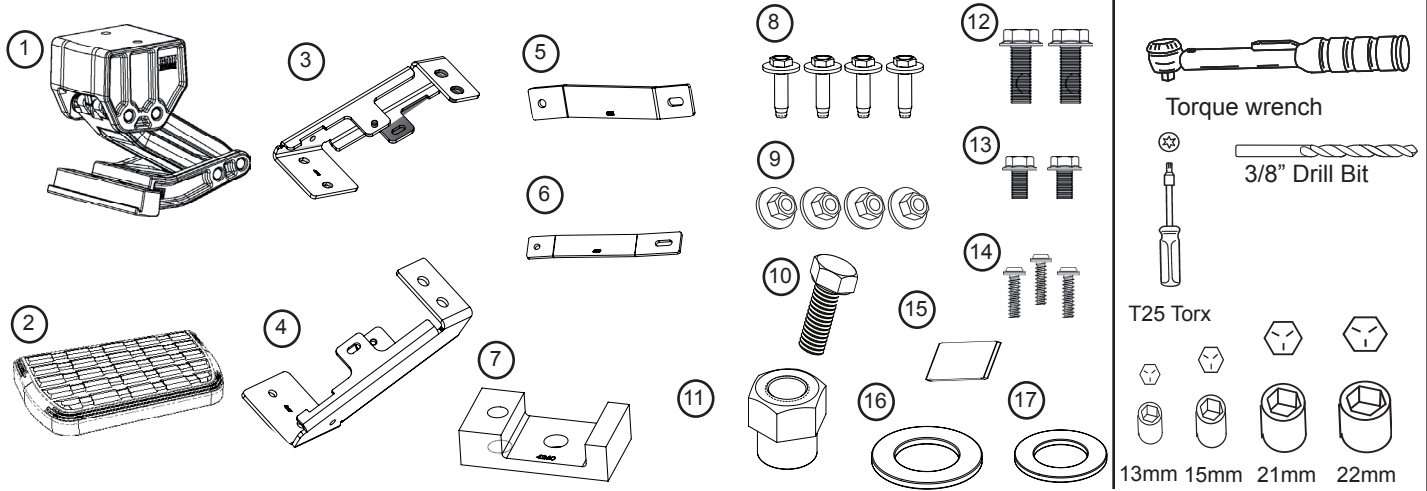


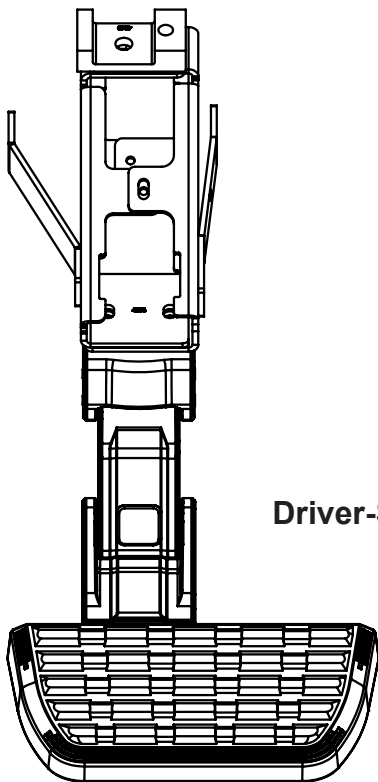


APPLICATION

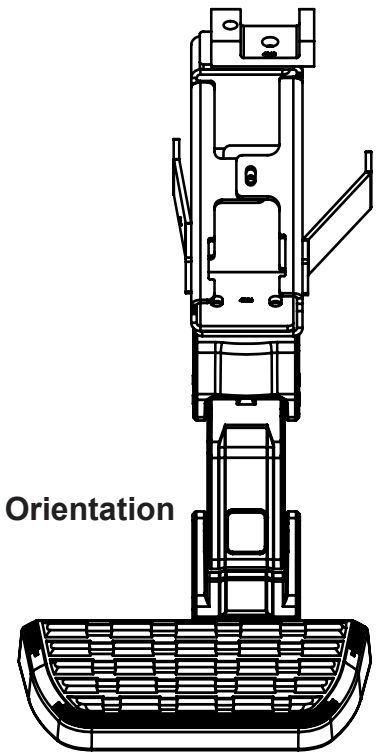
Ford Super Duty 2017
F-250/350 (Fits all Beds /Cabs)



Brackets must be configured for Passenger or Driver-Side as shown below:



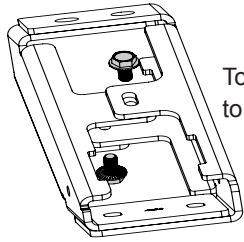
Driver-Side Orientation



Passanger-Side Orientation

Assemble brackets as shown in next three steps.

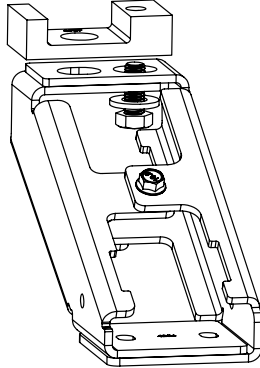
Note: Driver side shown. Rotate frame spacer 180° for passenger side. (See image in step 1 for passenger orientation).



Torque bolts to 20 ft-lbs.

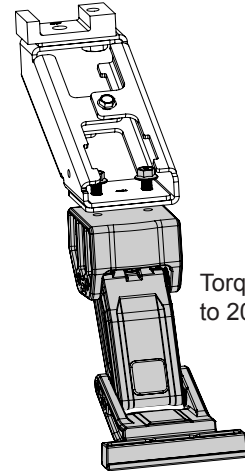
2

Using a 13mm socket assemble the brackets using (#13) bolts.



Do not tighten bolts.

Attach Frame spacer to assembled bracket using (#10) bolt and (#17) Washer.

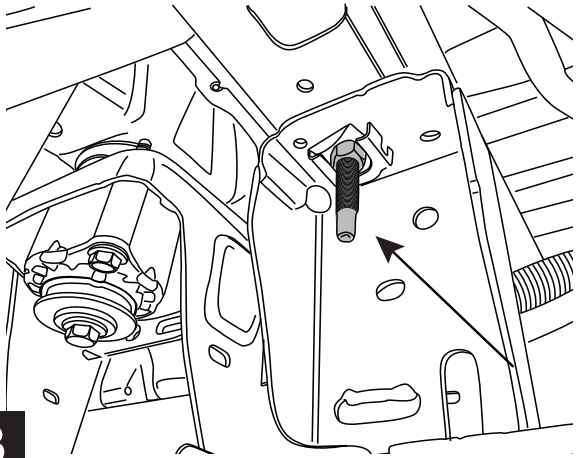


Torque bolts to 20 Ft Lbs.

Using 15 mm socket, attach bracket to linkage using two (#12) bolts.

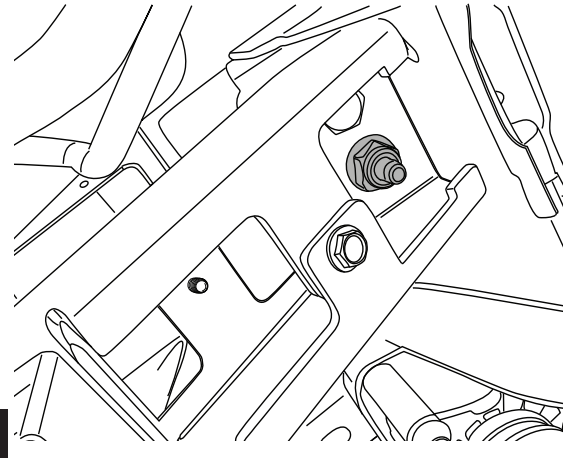
Using a 21mm Socket assemble Frame mount onto Lateral mount. Do not tighten bolts yet.

3



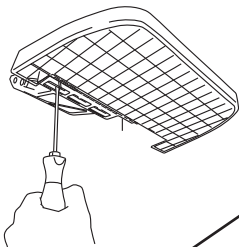
Snug Sleeve nut (#11) to frame, to allow for adjustment. Do not torque.

4

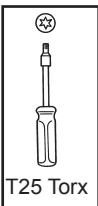
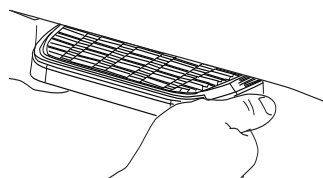


Offset the step pad to the rear position of the lower linkage assembly and secure using provided PT Screws (14). Tighten to 5 ft-lbs using T25 Torx bit.

5



Adjust step pad to be in line with fender .

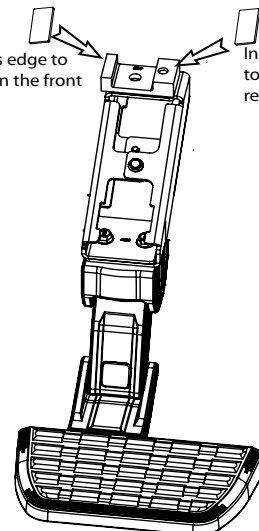


Verify that step pad is parallel to the bottom of the body line. A shim (#15) is provided to level out step pad. See image above for explanation.

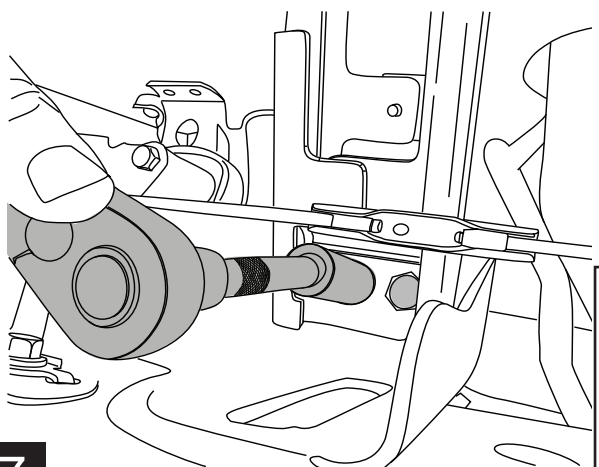
6

Install Shim on this edge to increase the gap on the front side of step pad.

Install Shim on this edge to increase the gap on the rear side of step pad.

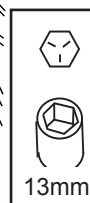
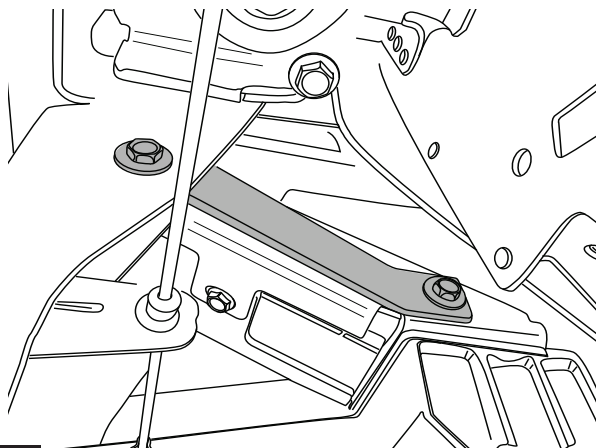


Torque both the Flange nut (#11) and bolt (#10) to 30 Ft Lbs.



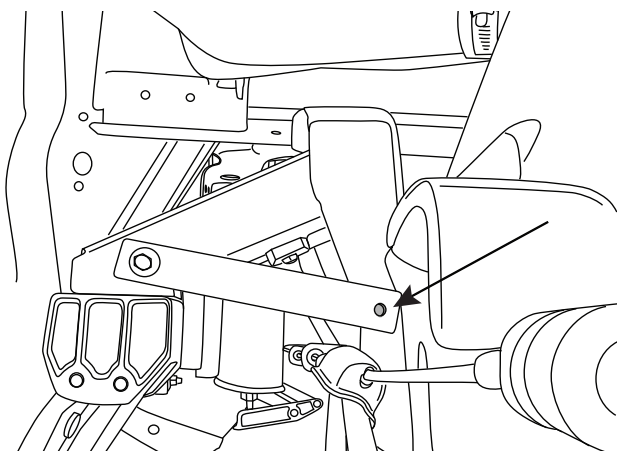
7

Install forward support bracket (#5) using supplied M8 hardware (#8) bolts and (#9) nuts. Torque bolts to 16Ft-Lbs.



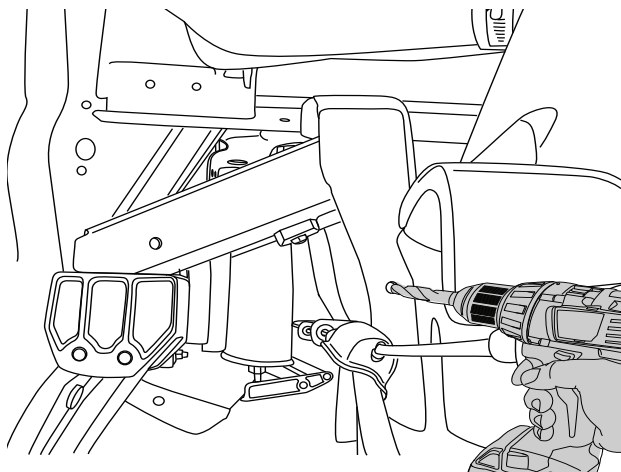
8

Attach rearward support bracket (#6) using supplied M8 hardware (#8) Bolts and (#9) Nuts. Locate bracket as shown. Center punch hole using bracket as a guide as shown.



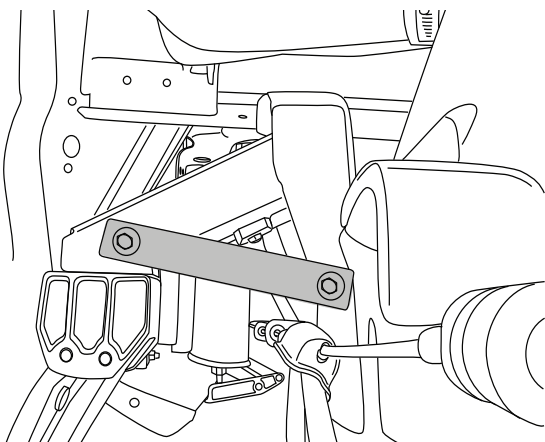
9

Remove bracket and pre drill hole using a 1/8" drill bit then drill to 3/8".



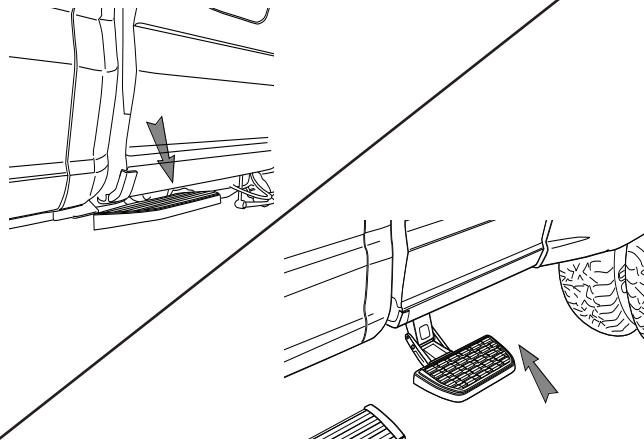
10

Install rearward support bracket (#6) using supplied M8 Hardware (#8) Bolts and (#9) Nuts. Torque to 16Ft-Lbs.



11

To deploy the step, press down using your foot on the outside edge of the step pad.



12

To retract, gently kick up on the underside of the step pad.