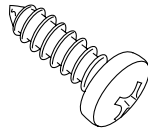
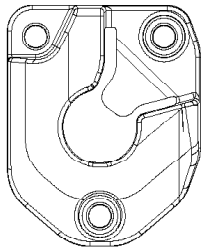
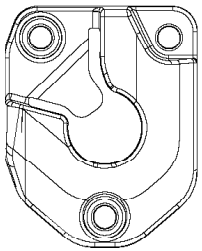


QUICK-MOUNT BRACKET INSTALLATION

PART # 74608-01A

Driver

Passenger



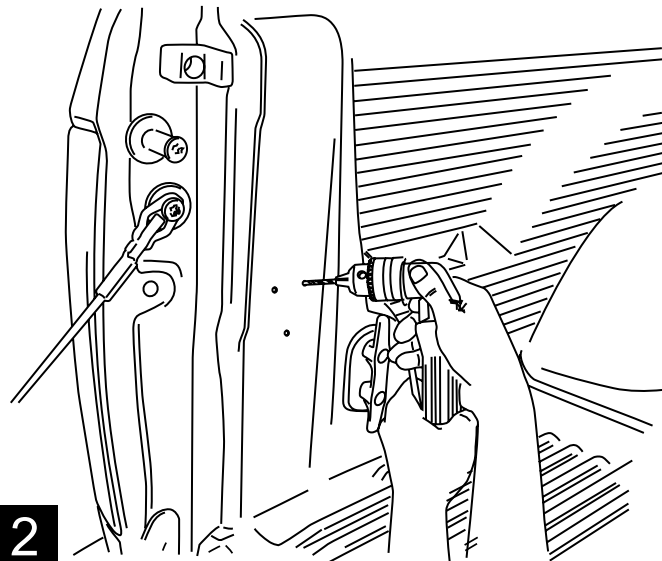
1

Universal mounting bracket

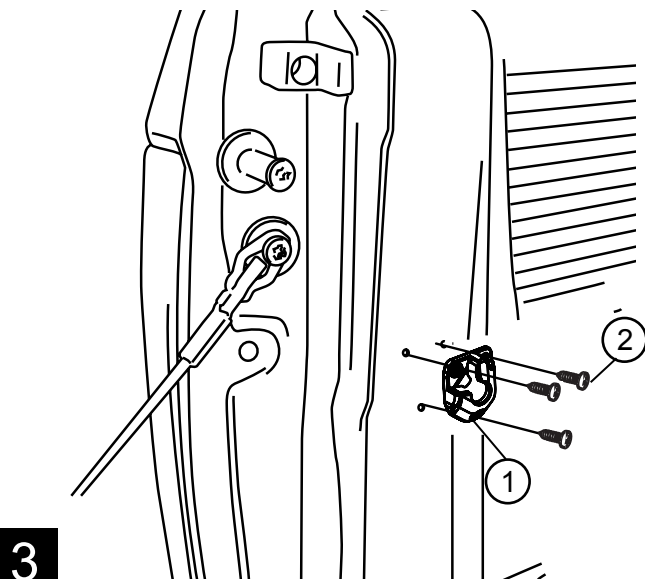
2 x6

Phillips head screw

Cut out supplied template and tape to the D-pillar as shown. Using a center punch, mark holes as specified by the template.



Using a power drill and 9/64" drill bit, drill through the sheet metal. If equipped with a bedliner, drill through bedliner.



Fasten mounting brackets using the supplied self-tapping Phillips screws and torque to 30 in. lbs. If equipped with a bedliner, install mounting brackets over bedliner.

NOTE: If bedliner has contours that may prohibit a flat, solid mounting surface, cut out a rectangular section to clear the bracket and mount the bracket directly to the metal D-pillar.