



DURABLE SILVER OR BLACK POWDER-COAT FINISH

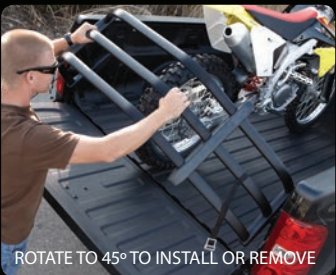


CONSTRUCTION
ROUNDED-RECTANGLE EXTRUDED TUBE DESIGN FOR
MAXIMUM STRENGTH AND TORSIONAL RIGIDITY



HEAVY-DUTY HAULER.

Invented, engineered and built in the USA, the all-new BedXTender HD™ is packed with advanced technology. Like patented rounded-rectangle 6063 T6 aluminum tubes and clam-shell design nylon composite uprights that create a rugged, torque-resistant cargo cage.



ROTATE TO 45° TO INSTALL OR REMOVE



HOLD EVERYTHING Flip it out with the tailgate open to gain an extra 2-feet of enclosed cargo area. Flip it inside and close the tailgate to keep tools and smaller cargo contained in the truck bed.



BEDXTENDER HD APPLICATIONS

VEHICLE MODEL	TRUCK BED SIZE / TYPE ▶	GM TRUCK	LARGE	DEEP	SMALL	NARROW
	Part Number: Silver	74805-00A	74804-00A	74803-00A	74801-00A	74802-00A
	Part Number: Black	74805-01A	74804-01A	74803-01A	74801-01A	74802-01A
CHEVROLET / GMC						
Colorado/Canyon - Standard bed - 2004–2012						●
Silverado/Sierra - Stepside bed - 2007–2012	Requires GM Mounting Kit 74606-01A					●
Silverado/Sierra-Standard bed - 2007–2012		●				
Silverado/Sierra-Stepside bed - up to 2007 Classic						●
Silverado/Sierra-Standard bed - up to 2007 Classic			●			
S10-Stepside bed - 1996–2004	Requires L-Bracket Kit 74601-01A					●
S10-Standard bed - 1996–2004	Requires L-Bracket Kit 74601-01A				●	
C/K Pickup-Stepside bed - 1988–2000						●
C/K Pickup-Standard bed - 1988–2000			●			
FORD						
F-150-Flareside bed - 1997–2012						●
F-150-Standard bed - 2004–2012				● ¹		
Lincoln Mark LT-Standard bed - 2006–2012				● ¹		
F-150-Standard bed - 1997 to 2004 Heritage Edition	Excludes Super Crew		●			
F-250/F-350 Super Duty-Standard bed - 2008–2012			● ¹			
F-250/F-350 Super Duty-Standard bed - 1997–2007			●			
Ranger-Standard bed - 1982–2012						●
Note: (1) On Ford F-150 and Super Duty with factory Tailgate Step, BEDXTENDER HD will sit at a slight angle on the open tailgate. Contact Customer Service for details.						
NISSAN						
Frontier-Standard bed - 1998–2012	Requires L-Bracket Kit 74601-01A	'05-'12 Requires Latch Kit 74607-01A			●	
Titan-Standard bed - 2004–2012			●			
Pickup-Standard bed-all earlier models	Requires L-Bracket Kit 74601-01A				●	
RAM / DODGE						
Dakota-Standard bed - 1987–2011						●
Ram-Stepside bed - All model years						●
Ram-Standard bed - 1982–2012			●			
TOYOTA						
Tundra - 2007–2012				●		
Tundra - 2000–2006					●	
Tundra D-Cab - 2000–2006			●			
Tacoma - 2005–2012					●	
Tacoma - 1995–2004	Requires L-Bracket Kit 74601-01A				●	
T-100 Pickup-Standard bed - 1993–1998	Requires L-Bracket Kit 74601-01A				●	
Pickup-Standard bed 1984–1994	Requires L-Bracket Kit 74601-01A					●
EXTRAS & OPTIONS						
No-Drill Bracket Kit - 74602-01A	Option for '04-newer Ford F-150 and '08-newer Super Duty		●	●		
Quick-Latch™ Mounting Bracket Kit - 74605-01A	Required for use with tonneau or shell	●	●	●	●	●

Check out the collection of truck bed accessories we offer.