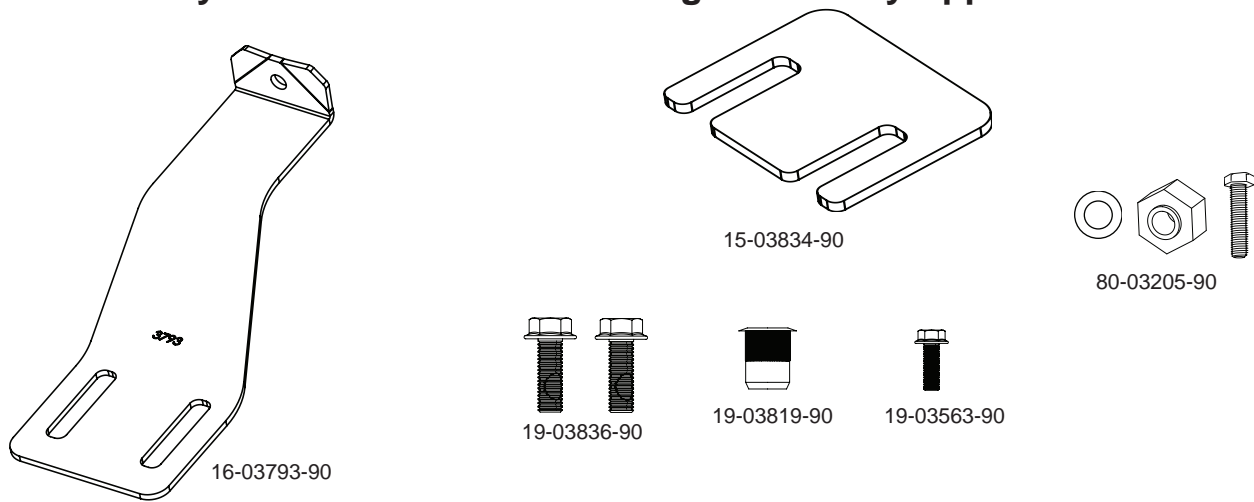
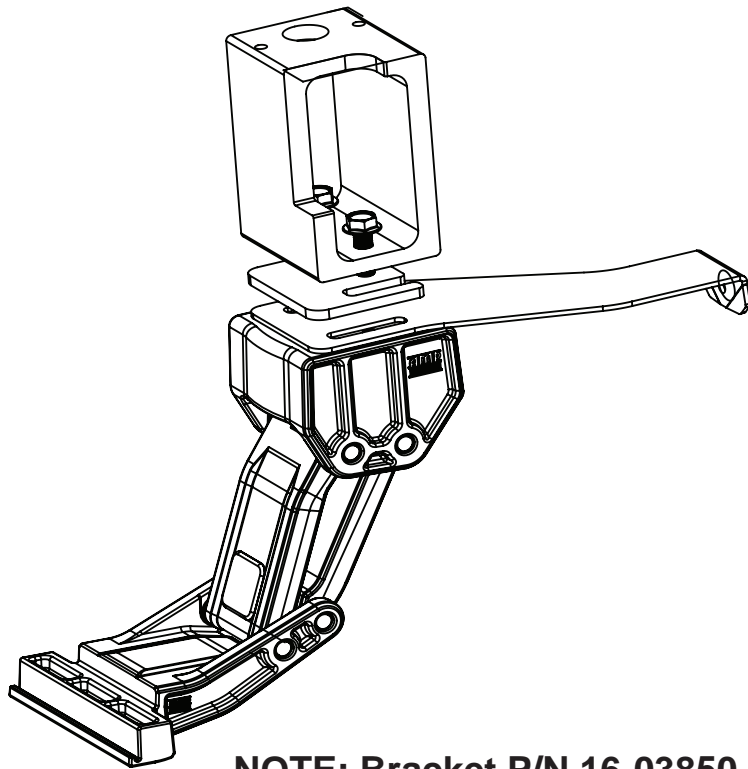


Note: Only needed for Crew Cab Long Bed Dually Applications.

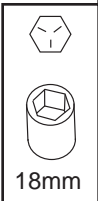


For Dually applications install provided brackets and spacer between linkage assembly and lateral bracket. Use supplied M10x40 bolts. **Do not tighten bolts yet. Continue with installation provided with p/n 75406-01A.**

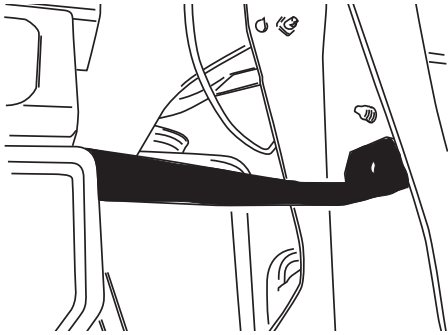


NOTE: Bracket P/N 16-03850-90 and bolts 19-03341-90 from PN 75406-01A will no longer be needed when using this dually upgrade kit.

1

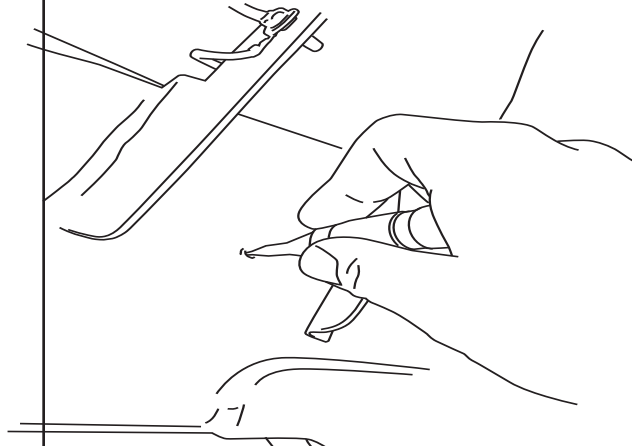


Slide steel bracket up to frame and mark hole location to be drilled.



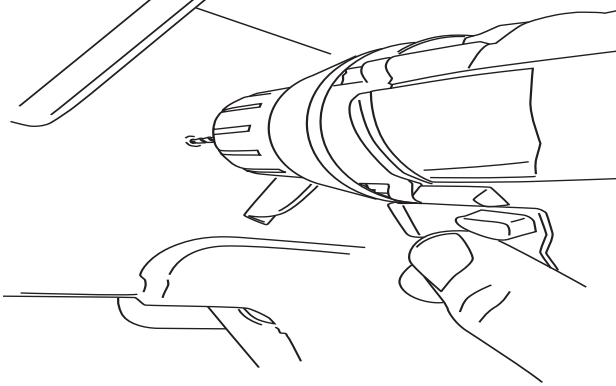
2

Remove Linkage assembly and center punch hole.



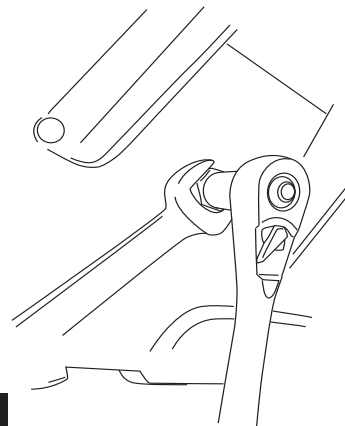
3

Pre drill hole using a 1/4" Drill bit. Next drill hole to 17/32".

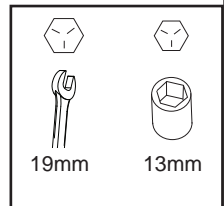


4

With Rivet Nut Tool held in place with 19mm wrench, tighten Hex Bolt until Rivet Nut deforms and secures itself to the sheet metal (20 ft-Lbs. or 4 turns). Remove Hex Bolt and Rivet Nut Tool.

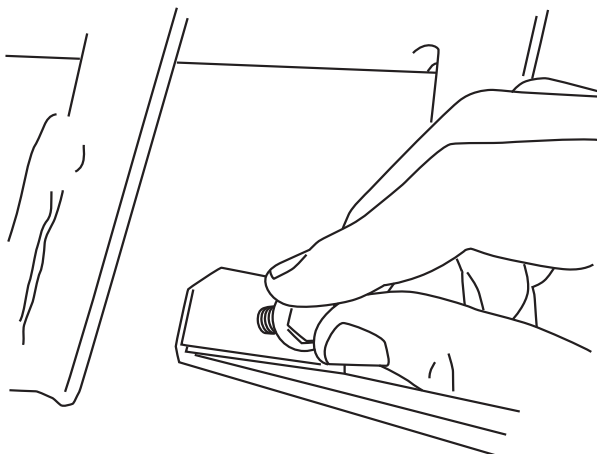


WARNING: Rivet Nuts not properly collapsed will not hold securely to sheet metal.



5

Assemble linkage into place and tighten with 13mm socket (Torque to 16 ft-lbs). Next install bolt on bracket and tighten using a 13mm socket (Torque to 16 ft-lbs).



6



BEDSTEP2™ OPERATION

The AMP Research BedStep2™ is foot operated and deploys and retracts with a nudge of your foot. To deploy, press down using your foot, on the outside edge of the step pad.

Maximum load capacity of the deployed step pad is 300 lbs.

Always use appropriate hand holds when stepping up to or down from your truck's cargo bed.



To retract, gently kick up on the underside of the step pad.



MAINTENANCE TIPS - The stepping surface and linkage should be periodically washed with mild soap and water using a soft brush or sponge to dislodge any mud, dirt or accumulated road grime.

In severe driving conditions, pressure washing the linkage is strongly recommended.

Do not apply silicone spray, waxes or protectants like Armor All® to the stepping surfaces.

CAUTION! BEDSTEP2™ SHOULD ALWAYS BE STOWED IN THE RETRACTED POSITION WHEN DRIVING.