



## User Guide & Installation Manual Transmission Shifter Kit

# ASCS SERIES

## INTRODUCTION

### Warning:

Before installation:

- Make sure the battery is disconnected
- Ensure the vehicle is on level ground
- Make sure the emergency brake is on
- Check that the tires are blocked in so the vehicle can not move
- Confirm the part is correct for your transmission
- Do not adjust the shifter until it is fully installed on the transmission

### Tools:

- Small set of Standard Allen Wrenches
- Wrench Sizes: 7/16", 1/2", 9/16", 3/4" or adjustable wrench
- Pliers
- Die Grinder or Hacksaw
- Digital Volt Meter

### Operation:

#### American Shifter Single Action Shifter

The single action shifter requires using the push button on the top of the knob. The shifter will lock in the following positions: Park, Reverse to Neutral and Neutral. You are required to push the button to shift from Park to Reverse.

#### American Shifter Dual Action Shifter

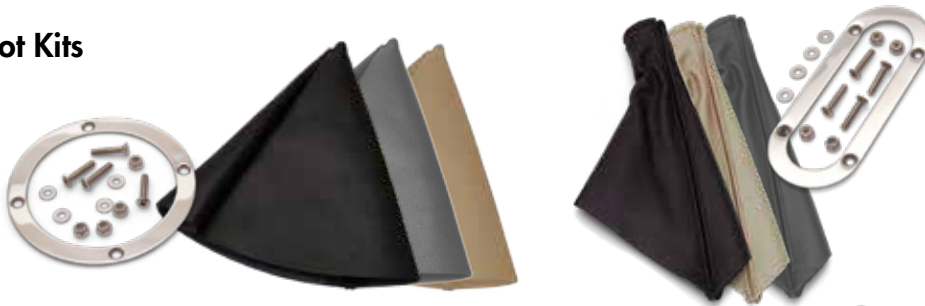
The dual action shifter not only works the same as the single action shifter above, but the Dual Action Shifter also allows you to change gears by pushing the stick to the side. When doing this you do not need to push the button on the knob.

## INDEX

- Introduction
- Assembly Illustration
- Assembly Photos
- Installation Steps
- Installation
- Supplements
- Side Shift Adapter Installation

## ACCESSORIES

### Boot Kits



STYLE	PART NO.	SKU
Black Vertical	ASCSB101BK	54585
Tan Vertical	ASCSB101TN	54587
Grey Vertical	ASCSB101GY	54589
Black Horizontal	ASCSB201BK	54595
Tan Horizontal	ASCSB201TN	54593
Grey Horizontal	ASCSB201GY	54591
Round Trim Ring	ASCTR101	54581
Oval Trim Ring	ASCTR201	54583

### Emergency Brakes

10" Floor Mount  
ASCBH10 - #96241



10" Transmission Mount  
ASCBH11 - #54094

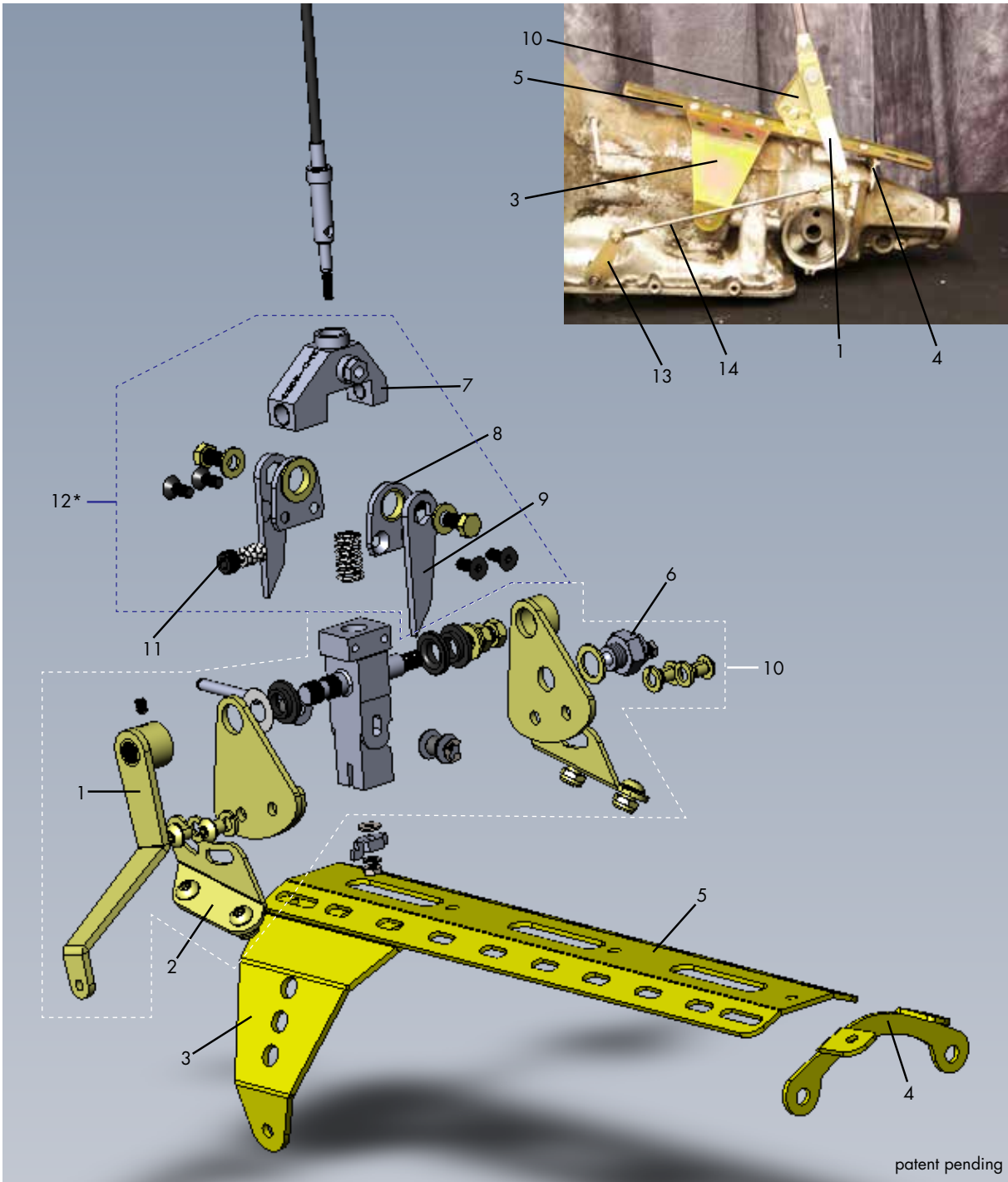
16" Transmission Mount  
ASCBH16 - #54096



# ASSEMBLY ILLUSTRATION

## IMPORTANT

For reference only. Brackets, linkage and assembly may vary based on your transmission. Please see assembly photos for your transmission.



- 1 – Arm
- 2 – Shifter Assembly Bracket
- 3 – Side Bracket
- 4 – Rear Bracket
- 5 – Top Plate
- 6 – Neutral Safety Switch

- 7 – Stop (set screw on side)
- 8 – Bushing Support
- 9 – Activation Arm
- 10 – Shifter Assembly
- 11 – Activation Spring

- \*12 – Side Shift Adapter  
Included on Dual Action  
Shifter kits only. Also sold  
separately.
- 13 – Shift Lever
- 14 – Shift Rod

# ASSEMBLY PHOTOS

Left

Right

Rear

Chrysler 727



Chrysler 904



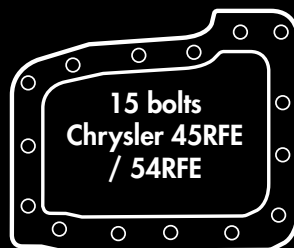
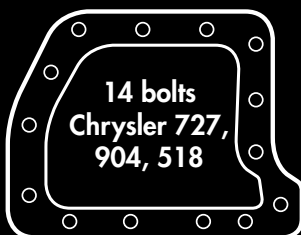
Chrysler 518



Chrysler 45RFE / 54RFE



## PAN BOLT PATTERNS





# INSTALLATION STEPS

## NOTE

Before starting installation, read the instructions thoroughly. Refer to the assembled photos for proper bracket placement and mounting holes.

### 1 Side Bracket

Temporarily mount the left and right side brackets to the main plate and transmission using supplied button head bolts and lock washers. Do not tighten at this point to allow for final adjustment later.



### 2 Tail Bracket

Temporarily attach the rear mounting brackets to the main plate using supplied hardware. **Note:** the bracket tabs should be facing the rear of transmission (toward the back of the vehicle). Do not tighten at this point to allow for final adjustment later.



### 3 Shifter Mechanism

**Note:** If you have a dual stage shifter kit, install the side shift adapter before continuing. See "Side Shift Adapter Supplement".

The American Shifter top plate supports multiple mounting positions, allowing front, mid-, and rear-mounting of the shifter mechanism. Choose the ideal mounting position for your installation and temporarily secure the shifter mechanism to the top plate with the supplied hardware. Put the shifter into park position, then tighten down the hardware. Test the shifter by moving it through the full range of gears and make sure the lever, knob, or any other parts do not have normal movement obstructed. The adjustable shifter assembly brackets allow the shifter assembly to be tilted forward and backwards to give additional clearance at the seat or dash if needed.



## NOTE

The images in these instructions are a TH350 transmission and are used for general reference only. Your kit may contain different brackets.

## FINE TUNING

### Neutral Safety Switch

When neutral safety switch is hooked up, make sure that the engine will not start in Reverse or in a Drive gear. To adjust, use American Shifter's neutral safety switch adjuster washer provided in kit.

### Shifting Gear Range

Be sure to test that the shifter can move smoothly throughout all the gears. You should be able to push the button or side shift to get into Park, Reverse to Neutral and Neutral, and Park to Neutral.

### Side Shift Adapter

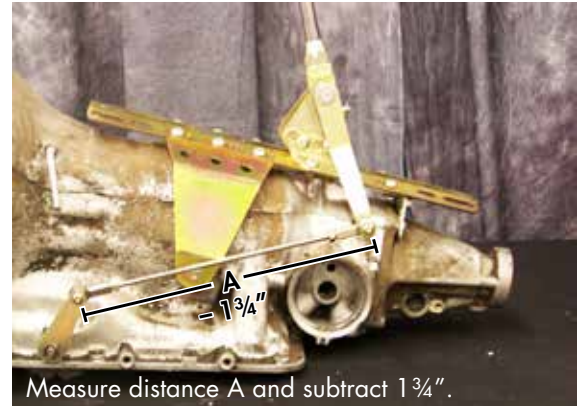
If you have a dual action shifter, you can adjust the pressure required to engage the shifter. Similarly, the stop point is adjustable with the set screw on the upper shifter mechanism on the side.

## INSTALLATION STEPS

### 4 Arm & Linkage

Install shift lever on shifter assembly at the park position (around 4:30 if looking at a clock).

Make sure the shifter and transmission are in Park position. To determine the correct rod length, measure from center to center between the two quarter inch holes in the shift lever and arm (A) and subtract  $1\frac{3}{4}$ " (see image below). Then cut threaded rod to size and install with the rod bearings and jam nut at each end.



#### A Chrysler 727



#### B Chrysler 904



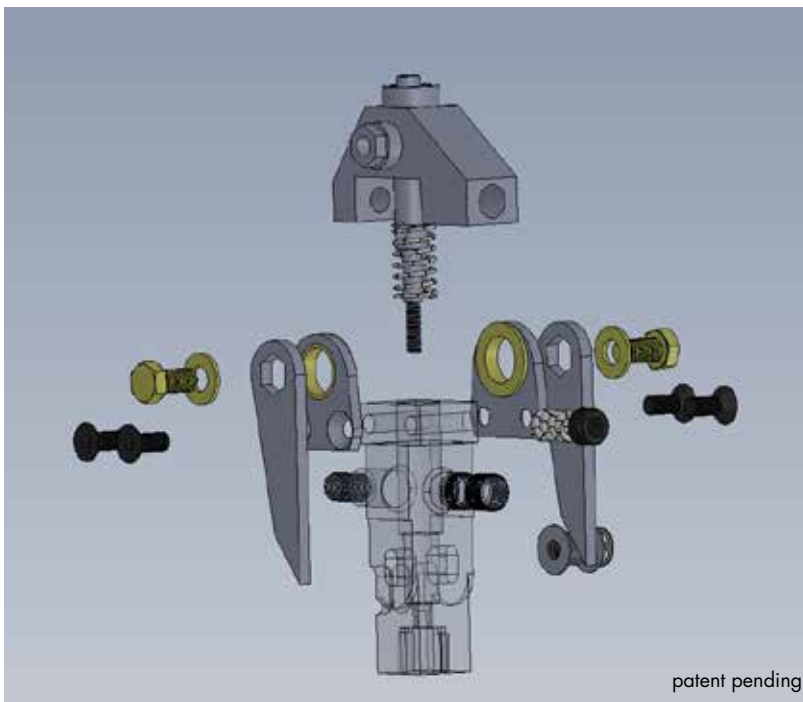
#### C Chrysler 518



#### D Chrysler 45RFE / 545RFE



## SIDE SHIFT ADAPTER SUPPLEMENT



**1** Remove the shifter arm to expose the shifter cable and slide the upper shifter body onto the lower shifter body.



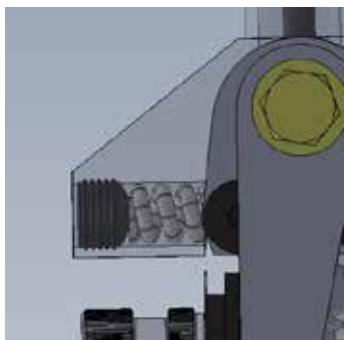
**2** Install both bushing supports onto the side shift adapter boss, and secure to the lower shifter assembly with 2 Alan screws.



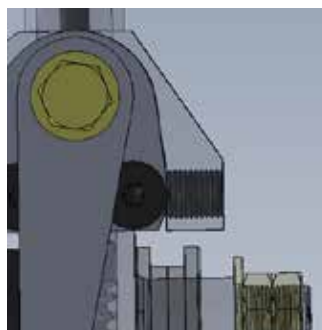
**3** While the shifter is in neutral, install the side shift activation arms so that it almost touches or rests on the roller bearing. Then, use the washer and bolt to press the arm onto the hex boss.



**4** Set the activation spring pressure to the desired rate for shifting gears when side shifting.



**5** Place the shifter arm in neutral at the natural resting position. Then set the shifter stop set screw until it makes contact with the lower shifter body.



**6** Reinstall the shifter arm and trim the surplus cable if needed. Test the shifter in each gear and secure all hardware. Adjust the activation & stop screw as necessary.

### NOTE

The side shift adapter is only included in the dual action shifter. If you have a single action shifter this information is applicable.

\*Note: If your kit did not come with the shift gate installed, please refer to the diagram on page 2 for installation.