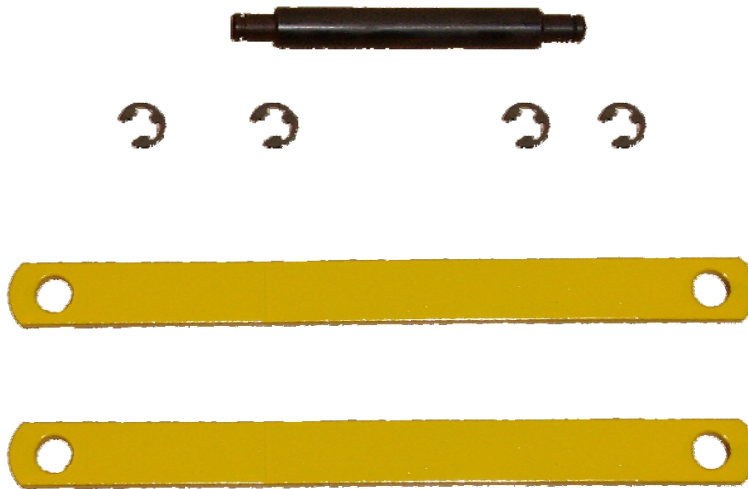




AME Conversion Kit  
P/N 16200  
Optional Strap Instructions

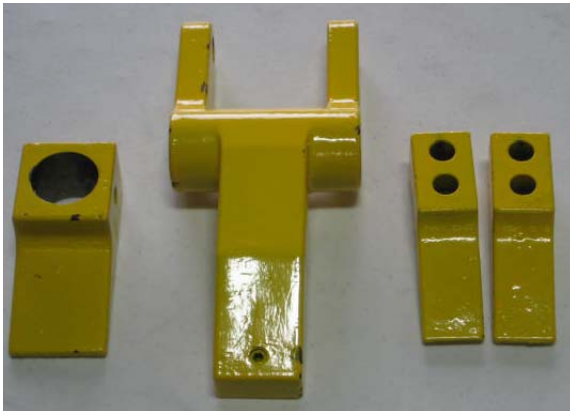


This Kit includes additional side straps & pin (shown above)  
These parts are needed for all IMT, FEC & Stellar Bead Break-  
ers, along with ESCO Bead Breakers purchased before 2004.

\* This item is not needed for AME Bead Breakers which are  
equipped with extended length side straps during production.



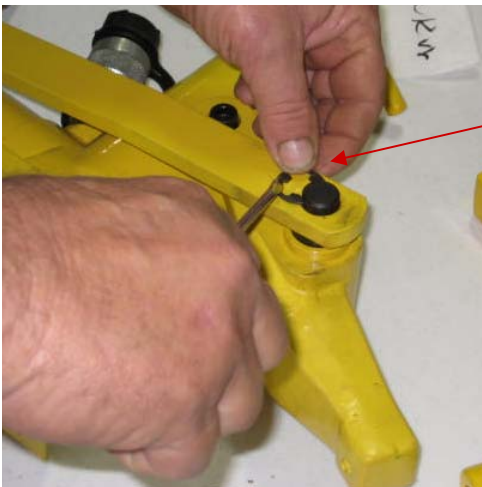
Convert your Combi / Ag bead breaker to work on the new 3 piece wheels.



AME Conversion Kit  
P/N 16200

## Conversion Instructions

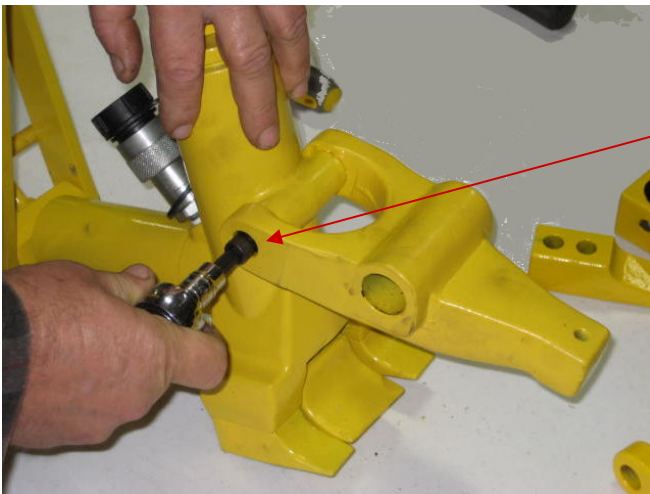
1. Remove the retaining clip on each side of the front straps and swing straps away to the rear.



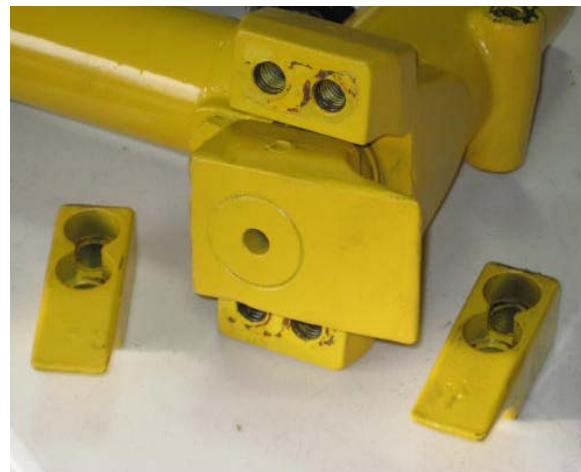
2. Remove the 2 straps, spacer rings, and pivot pin from the jaw. The spacers will **not** be used on the conversion.



3. Using a 5/16 " hex key ( allen wrench ), remove both bolts and spacers.



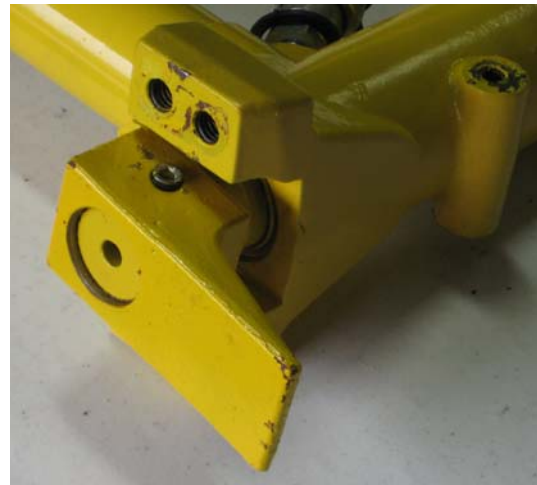
4. Remove the jaw. Using a 3/8 " hex key ( allen wrench ), remove the Socket Head bolts from the bottom of each foot.



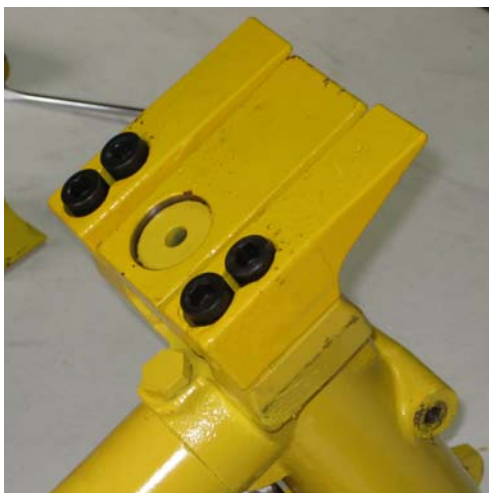
5. Using a steel punch, knock out the roll pin and remove the center foot. Once the pin is removed, gently tap the foot to remove.



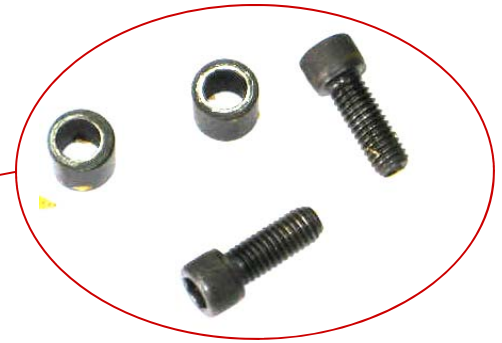
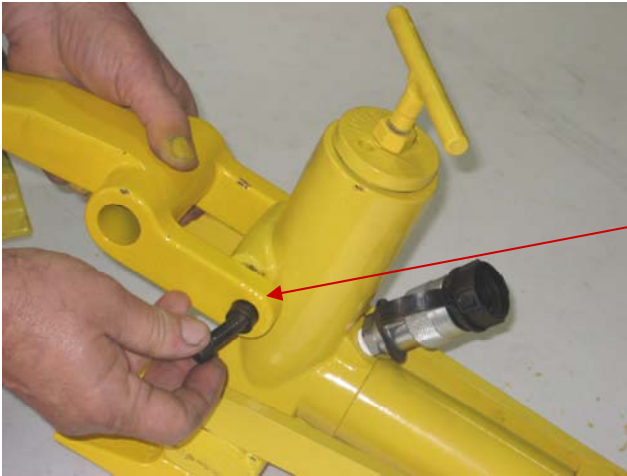
6. Install the new center foot and drive the roll pin in place with a punch and a hammer.



7. Install the 2 larger side feet using the 4 Socket Head bolts.



8. Install the new jaw using the 2 Socket Head bolts and spacers.



9. Replace the pivot pin and install the e-clips on both sides using a hammer.



10. You now have a modified combi/ag bead breaker and are ready to demount tires on the new 3 piece wheels.



Learn more about wheel and tire service tools we have.