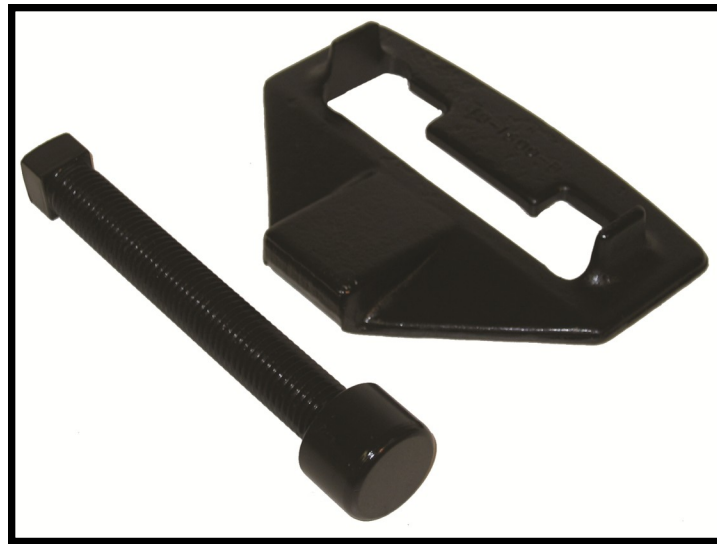




INSTRUCTION MANUAL

Part # 16070

HOW TO INSTALL 16070 SHUR-LOK ADAPTER



Step 1



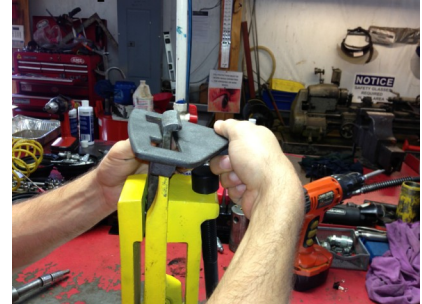
Remove screw set with 3/8 Allen Wrench.

Step 2



Pull hook from bead breaker.

Step 3



Install hook through 16070 plate.

Step 4



Reinstall hook into tool, keeping plate on the hook.

Step 5



Reinstall set screw and torque to 50 ft lbs.