



INSTRUCTION MANUAL



#14460 AIR HYDRAULIC BOTTLE JACKS





AME AIR HYDRAULIC BOTTLE JACKS INSTRUCTION MANUAL

Specifications

! WARNING !

FAILURE TO READ THESE WARNINGS MAY RESULT IN PROPERTY DAMAGE AND OR PERSONAL INJURY.

Support load by appropriate means after lifting.

Use as lifting device only.

Do not exceed rated capacity.

Use only on hard, level surface.

Center load on the jack,

Do not modify jack.

Only use attachments and/or adapters supplied with or sold specifically for the jack.

Only lift areas of the vehicle designated by the vehicle manufacturer.

MODEL	LIFTING CAPACITY	MIN. HEIGHT	1st STAGE HEIGHT	NET WEIGHT	GROSS WEIGHT	PACKAGE SIZE	AIR PRESSURE
14460	20 TON	245 MM	475 MM	16 KG	18 KG	31 x 24 x 31 MM	0.7-1.0 MPa

Owner/Operator Responsibility

It is the owner/operator responsibility to properly use and maintain this equipment and the legibility of all warnings and instruction labels. Carefully read and understand the instructions and warnings in this manual before operating this equipment. Keep this manual in a safe location for future reference.

Warranty of this unit will be void on any part if the unit subjected to misuse due to overloading, abuse, lack of maintenance and unauthorized modifications. No warranty – verbal, written or implied – other than the official, published AME new machinery and equipment warranty will be valid with this unit. In addition, it is your responsibility to be aware of existing Federal, State and Local codes and regulations governing the safe use and maintenance of this unit.

Inspection

Prior to each use, visually inspect for leaking hydraulic oil, damaged, loose or missing parts. If jack is worn or damaged remove from service and contact your nearest service center for repair.

Maintenance

Check oil level. With the jack in an upright position and the ram completely retracted, open the release valve (turn counter-clockwise) and remove the filter plug. The oil should be just up to the hole. Fill if necessary with clean hydraulic jack oil.

Lubricate internal components. With the release valve open, manually pump the handle six times.

Purge the hydraulic system of air. During transit the unit may become “air-bound”, causing a spongy ram action. To purge the system, close the release valve (turn clockwise). Manually pump the jack to full height. Open the release valve and push down on the ram. Repeat these steps if necessary to completely purge the system.

Keep the jack clean. Occasionally lubricate the handle socket pivot point, extension screw, release screw thread, and air valve to prevent corrosion.



AME AIR HYDRAULIC BOTTLE JACKS INSTRUCTION MANUAL

Operation

1. Jack operation is controlled either manually or by external air pressure. Either insert the handle into the handle socket to manually operate or connect to an external air pressure source (clean connections prior to assembly).
2. To raise the jack, turn the release valve clockwise until tight and either manually pump with the provided handle or while connected to an air supply depress the air valve.

! WARNING !
FOR YOUR SAFETY
USE JACK FOR LIFTING ONLY. LOAD MUST BE
SUPPORTED IMMEDIATELY BY OTHER APPROPRIATE MEANS.

3. To lower the jack turn the release valve counter clockwise slightly and very slowly. Be careful not to turn the valve quickly or more than twice, otherwise, dangerous sudden lowering may occur.



AME AIR HYDRAULIC BOTTLE JACKS INSTRUCTION MANUAL

Trouble Shooting

PROBLEM	CAUSE	SOLUTION
Air pump will not operate	Low air pressure Air outlet is frozen Lack of oil Other	Keep air pressure between 0.7-1.0 MPA Stop using and thaw frozen outlet Supply oil to air valve Contact service center
Air pump acts but ram won't rise	Release valve is open Lack of hydraulic oil "Air-bound" system Other	Close valve clockwise Supply hydraulic oil See maintenance Contact service center
Ram will not rise to highest position	Lack of hydraulic oil Release valve not fully closed	Supply hydraulic oil Close valve clockwise
Ram will lower slowly	Outlet valve dirt or defective Air pump packing defective	Contact service center
Ram will rise slowly	Filter is full Air pump packing defective Release valve not fully closed	Contact service center
Oil blowing from air pump	Air pump packing defective	Contact service center
Ram will not lower	Release valve/circuit defective	Contact service center

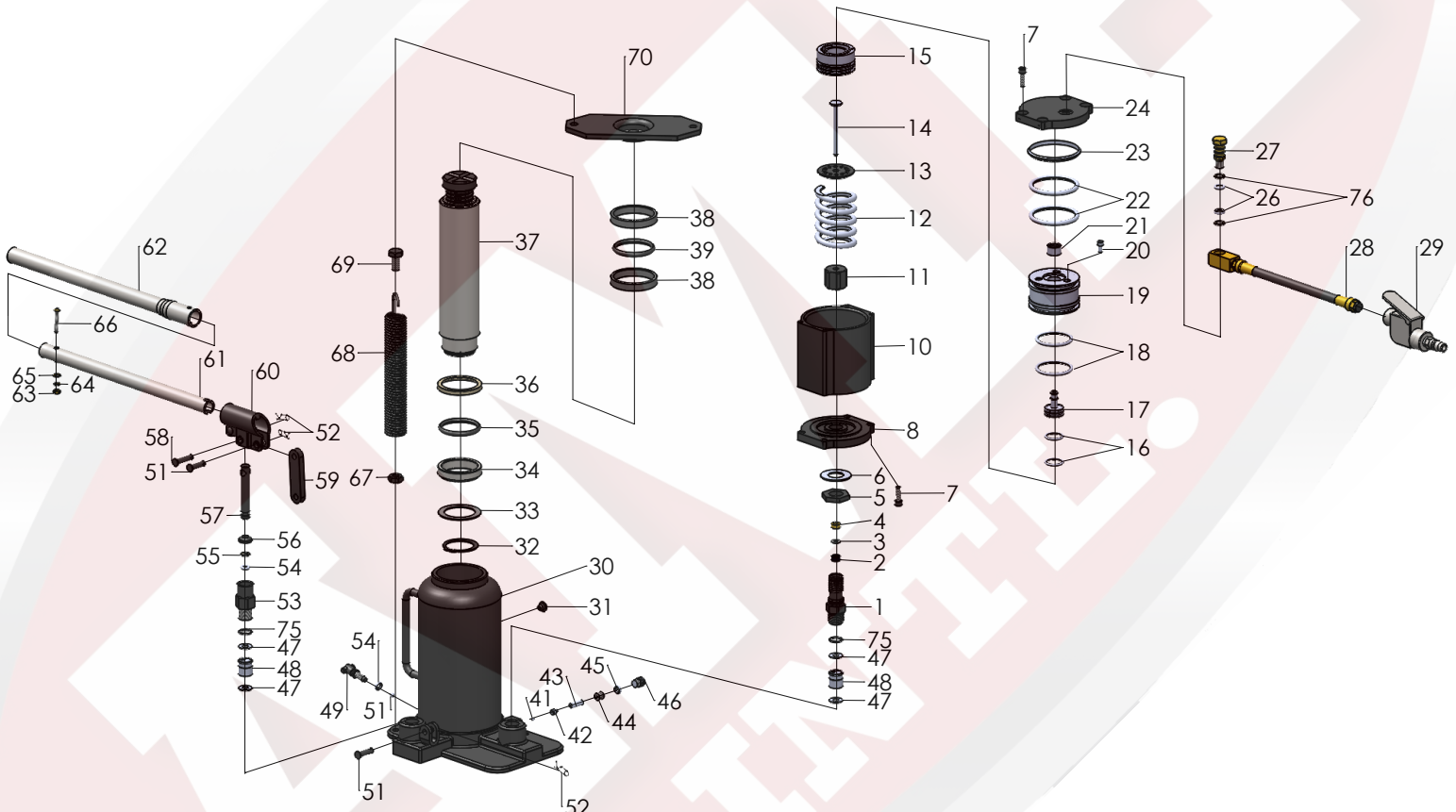
SERVICE: Contact your nearest authorized service center for repairs and/or replacement parts.





PARTS BREAKDOWN

Parts List For Air Hydraulic Bottle Jack 14460





PARTS BREAKDOWN

Parts List For Air Hydraulic Bottle Jack 14460

ITEM #	DESCRIPTION	Q'TY	ITEM #	DESCRIPTION	Q'TY	ITEM #	DESCRIPTION	Q'TY
14460-001	Pump Cylinder	1	14460-031	Oil Filler Plug *	1	14460-061	Font Handle	1
14460-002	Y-seal *	1	14460-032	Snap Ring	1	14460-062	Rear Handle	1
14460-003	Nylon Gasket *	1	14460-033	O-ring Retainer	1	14460-063	Hex Nut	1
14460-004	Copper Washer	1	14460-034	O-ring *	1	14460-064	Lock Washer	1
14460-005	Nut	1	14460-035	Seal Washer	1	14460-065	Flat Washer	1
14460-006	Butterfly Spring	1	14460-036	Piston Ring	1	14460-066	Cross head soket cap screw	1
14460-007	Socket head cap screw	8	14460-037	Ram Assy	1	14460-067	Hex Nut (thin)	2
14460-008	Base Cover	1	14460-038	Bushing	2	14460-068	Return Spring	2
14460-009	Steel Ball	4	14460-039	O-ring *	1	14460-069	Screw	2
14460-010	Air Motor Housing	1	14460-040	Snap Ring	1	14460-070	Spring Lid	1
14460-011	Nut	1	14460-041	Steel Ball	1	14460-071	Snap Ring	1
14460-012	Spring	1	14460-042	Safety Vavle Ball Seat	1	14460-072	Washer	1
14460-013	Washer	1	14460-043	Safety Vavle Spring	1	14460-073	Steel Ball	1
14460-014	Air Pump Plunger	1	14460-044	Safety Valve Adj screw	1	14460-074	O-ring *	3
14460-015	Air Piston Base	1	14460-045	O-ring *	1	14460-075	Nylon Gasket *	2
14460-016	O-ring *	2	14460-046	Screw	1	14460-076	Nylon Gasket *	2
14460-017	Air Shuttle Vavle	1	14460-047	Copper Washer *	4			
14460-018	O-ring *	2	14460-048	Vavle Block Assy	2			
14460-019	Air Piston	1	14460-049	Release Assy	1			
14460-020	Socket head cap screw	3	14460-050	Steel Ball	1			
14460-021	Shuttle Valve Seal	1	14460-051	Link Pin	2			
14460-022	O-ring *	2	14460-052	Pin	3			
14460-023	O-ring *	1	14460-053	Pump Cylinder	1			
14460-024	Top Cover	1	14460-054	O-ring *	2			
14460-025	Snap Ring	1	14460-055	Nylon Gasket *	1			
14460-026	O-ring *	2	14460-056	Dustproof Ring *	1			
14460-027	Coupler	1	14460-057	Pump Plunger	1			
14460-028	Air Hose Assy	1	14460-058	Pump Plunger Pin	1			
14460-029	Air Valve Assy	1	14460-059	Link	1			
14460-030	Oil Tank Assy	1	14460-060	Socket	1			