



Nerf Bars Installation Instructions

P/N 210276; 210276.1: 2015+ Ford Transit Nerf Bars

Before you begin:

- *Stainless steel hardware may bind together when tightening — apply an anti-seize assembly lubricant to the threads of each bolt before assembly*
- *This installation requires two or more people*

Required Tools:

- Standard and metric wrench set
- Standard and metric socket set
- Drill or impact driver
- Wire brush

Included Hardware:

P/N	Description	Quantity
70231	Self-tapping screw, #14 x 1-1/2", SS	8
70219	M8-1.5 x 30mm hex head bolt, SS	8
70101	M8-1.5 hex nut	8
70435	5/16" ID split washer, SS	16
70020	5/16" ID flat washer, SS	16
70246	Anti-Seize packet	1



Additional Parts:

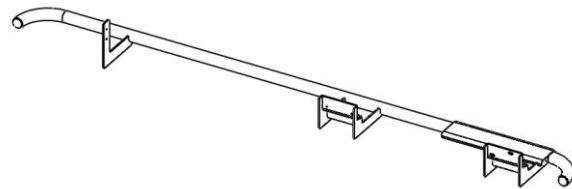
Description

Quantity

Picture

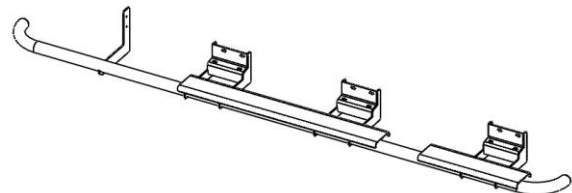
Transit Nerf Bar, Driver's Side
(148 WB shown)

1 ea



Transit Nerf Bar, Passenger's Side
(148 WB shown)

1 ea



Nerf Bar Installation:

1. Remove any factory running board if applicable.
2. Starting with the passenger's side nerf bar, install the nerf bar up against the body of the vehicle over the factory installed studs.
3. Slide the nerf bars toward the front of the vehicle so the rear blade contacts the van.
4. Loosely install 5/16" split washers, 5/16" flat washers, and M8 nuts over the studs to hold the nerf bar up to the body (reference Figure 1). Start with the front-most attachment point and work towards the rear of the vehicle.

PRO TIP: It may be helpful to use a wire brush to remove some of the factory under-coating on the studs and threaded inserts. First check studs/inserts with a nut/bolt to determine if it's necessary.



Figure 1: Hardware Installed Through Nerf Bar Brackets

5. Loosely install the M8-1.5 x 30 mm bolts, 5/16" split washer, and 5/16" flat washers into the threaded inserts through the nerf bar brackets (Figure 1).
6. Fully tighten the front-most attachment point. Both the nuts on the factory studs and the bolts into the threaded inserts.
7. With one person sighting down the side of the vehicle, have another person position the rear blade into the desired location (Figure 2).
8. With the nerf bars in the desired location, use two (2) self-tapping screws to attach the rear blade to the vehicle (Reference Figure 2 & 3).

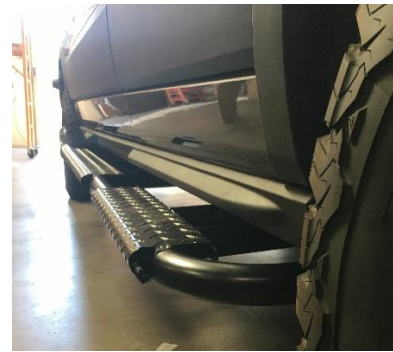


Figure 2: Alignment of Nerf Bar to Body Side



Figure 3: Rear Blade Secured into Position

9. Tighten remaining hardware on middle mounting brackets.
10. Repeat the same installation steps for the driver's side with the exception of the middle bracket – no factory studs are available.
11. Use the provided self-tapping screws through the provided holes to attach the middle brackets on the driver's side (Figure 4).



Figure 4: Driver's Side Middle Bracket

12. Your new Aluminess Nerf Bars are now installed, enjoy!