



NERF BAR INSTALLATION INSTRUCTIONS 155" WB **2003-2013 GMC/CHEVY VAN**

Please read before beginning

- *Stainless steel hardware may bind together when tightening—It is recommended that you apply an anti-seize assembly lubricant to the threads of each bolt before assembly*
- *This installation requires two people*

Required tools

- Standard wrench set
- Drill, with ¼" drill bit

Included hardware

Quantity

• 70008 - 1/4-20 Stainless steel nuts with nylon locking insert	22
• 70009 - 1/4 x 5/8 Washer	37
• 70017 - 1/4-20 x 4" Flat head socket cap screw	7
• 70018 - 1/4-20 x 5" Hex bolt	6
• 70040 - 1/4 Countersunk washer	7
• 70066 - 1/4-20 x 3" Flat head socket cap screw	7
• 70119 - 1/4-20 x 2" Button head socket cap screw	9

Assembly instructions

1. Driver Side:
 - a. Remove the plastic step on the driver side found just inside the driver's door (take note of any wiring because you will be drilling in this area).
 - b. Hold the nerf bar up oriented correctly.
 - i. The front mounting bracket should be held up against the step (see figure 2) and the rear mounting bracket should be on either side of the stock van channel (see figure 3).

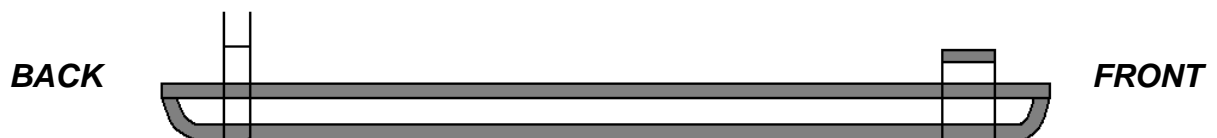


Figure 1

- c. Front Mounting Bracket:
 - i. With the front mounting bracket held up against the step.
 - ii. Drill through the bracket and the step with a ¼" drill bit (be careful of any wiring that may be on the top of the step).
 - iii. After drilling the first hole insert a ¼-20 x 2" Button Socket Cap through the hole, with a flat washer on both sides, and a ¼-20 Nylock Nut.
 1. The head of the bolt should be on the top of the step (i.e. the bolt is going down and the nut is on the bottom of the vehicle).



- iv. Repeat steps "ii" and "iii" until there are three bolts attaching the front mounting bracket to the bottom of the step.



Figure 2

- d. Rear Mounting Bracket:
 - i. With the rear mounting brackets on either side of the cross beam drill through both sides of the mounting bracket and the crossbeam with a $\frac{1}{4}$ " bit.



Figure 3

- ii. After drilling the first hole insert a $\frac{1}{4}$ -20 x 5" Hex Bolt through the hole, with a washer on either side, and $\frac{1}{4}$ "-20 Nylock Nut on the end.
 - 1. There are two extra washers for each 5" bolt for spacer if needed.



- iii. Repeat steps "i" and "ii" so that there are two bolts holding the rear mounting bracket to the crossbeam.
- e. Middle Mounting Bracket:
 - i. Follow the same procedure outlined in step "d" to attach the middle bracket to the vehicle.
- f. Pinch weld attachment:
 - i. You are going to drill the nerf bar tube closest to the van to the sheet metal of the body curving under the van.
 - ii. Find three locations between the front and rear mounting brackets.

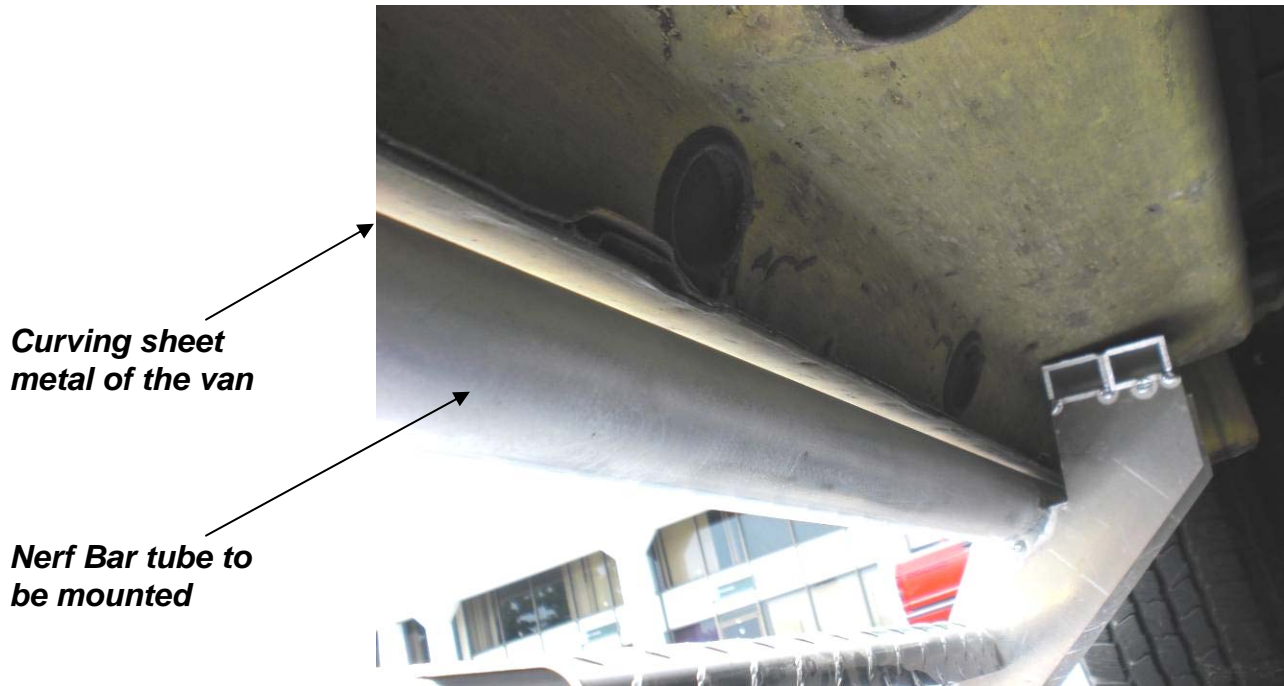


Figure 4

- iii. Drill through the nerf bar tube and the sheet metal with a 1/4" drill bit.
- iv. Insert a 1/4"-20 x 3" Flat Socket Cap Bolt through the hole, use a Counter Sunk Washer on the head, a Flat Washer on the end, and use a 1/4"-20 Nylock Nut.
 - 1. Depending on the angle of the drill you may need to use a 4" long bolt.
- v. Repeat steps "iii" and "iv" until three locations have a bolt through them.
- 2. The steps are the same for the passenger side except:
 - a. There needs to be 4 bolts holding the nerf bar tube to the curving sheet metal of the van.
 - i. The extra bolt should be used to reinforce the step for the back door on the passenger side.
 - b. Middle Mounting Bracket (passenger side):
 - i. The middle bracket mounting procedure is different than that of the driver side. Follow the same procedure outlined in step "c" to attach the middle bracket to the vehicle.