



## **FRONT BUMPER INSTALLATION INSTRUCTIONS** **2003-2010 CHEVY VAN**

### **Please read before beginning**

- *Stainless steel hardware may bind together when tightening—It is recommended that you apply an anti-seize assembly lubricant to the threads of each bolt before assembly*
- *This installation requires two people*

### **Required tools**

- Ratchet with 15mm, 17mm, 21mm, and 3/4" sockets
- 3/4" combination wrench
- Cutting tool (snips, shears, etc)
- Leveling tool



### **Included hardware**

### **Quantity**

• 70108 - 1/2-13 x 6-1/2" Hex bolt	2
• 70103 - 1/2-13 x 2 1/2" Hex bolt	4
• 70049 - 3/4" Bolt	2
• 70048 - 3/4" Flat Washer	2
• 70047 - 3/4" Nylock Nuts	2
• 70033 - 1/2-13 Nylock nuts grade 8	6
• 70035 - 1/2 ID Washer	12
• 300154 - Front bumper bracket, driver side	1
• 300155 - Front bumper bracket, passenger side	1
• 300156 - Frame horn angle bracket	2
• 70123 - U-Bolts 3/8"	2
• 400511 - Fairlead Cover	1
• 70008- 1/4-20 Nylock Nuts SS	4
• 70039- 1/4 x 7/8 Fender Washer SS	4
• 70060- 1/4-20 x 1" Button Head Bolt SS	4
• 70024 - 3/8-16 Nut with locking nylon insert	4
• 70028 - 3/8 ID x 7/8 OD Washer	6
• 70009 - 1/4" ID Washer	4
• 400503.4 - Keys, Tool Box Lock Set	1 set

### **Installation Instructions**

1. To remove the stock bumper, first loosen the outer bolts on the tension rods using the 15mm socket, indicated by the square in figure 1 below—do not fully remove this bolt

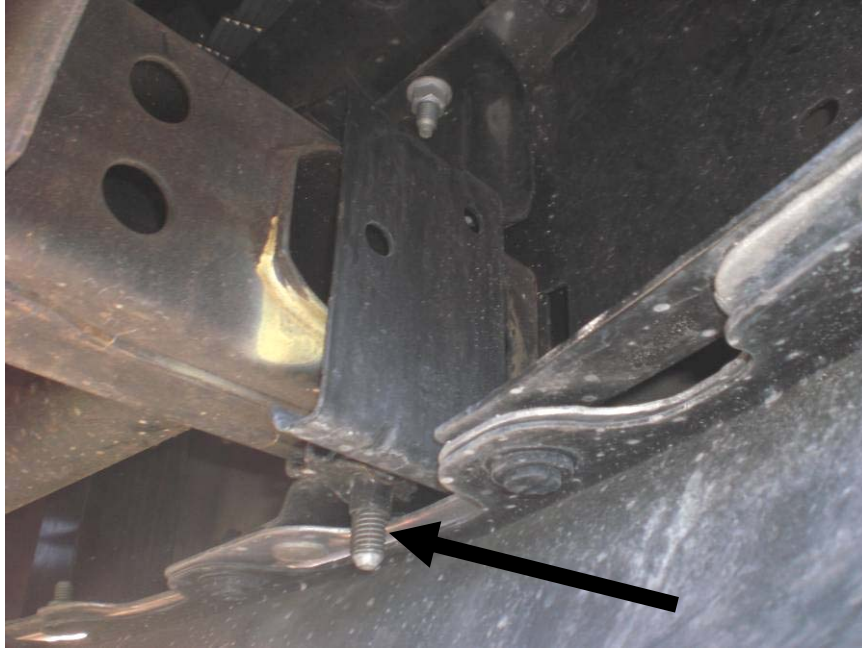


2. Remove the two inner bolts (indicated by the circle in figure 1) holding the tension rods to the frame, then rotate the rod towards the tire so that it won't catch on anything when you pull the bumper off



***Figure 1: Stock bumper tension rod***

3. Disconnect any driving lights or wiring harnesses which are connected to the front bumper
4. Remove the two large bolts holding the bumper on (indicated by an arrow in figure 2 below)—they are located on the front of the frame, and go down vertically through it; use the 21mm socket



**Figure 2: Stock bumper vertical retaining bolt**

5. Remove any additional hardware or clips which may be still attached, then remove the stock bumper
6. Un-clip the plastic shield in front of the radiator, and trim it back so that the front edge is behind the horizontal pipe as shown in the figure below, then re-install it



**Figure 3: Trimmed plastic shield**

7. Install the supplied bumper brackets as shown in figure 4 below—use the supplied 6" long bolts, and with a washer on the bolt head, insert them through the slotted hole so that they go through the vertical hole in the frame—take note of the direction that they are facing



**Figure 4: Installed bumper bracket**

8. Fasten the bolts using the supplied 1/2" nuts and washers, but do not tighten them down fully yet—you may have to move the brackets forward or backward in a later step

**Figure 5: Installed bolt shim**

9. With someone assisting you, lift up the Aluminess bumper and place it on the bumper brackets



**Figure 6: View of toolbox inside, showing correct orientation of mounting hardware**

10. Insert the 1/2" x 2 1/2" long bolts into the two upper holes in the toolbox sides, again with washers on the bolt heads and bolt heads on the inside of the toolbox, making sure they go through the slotted holes in the bumper brackets—one person may have to lift up on the bumper in order to line up the holes
11. Fasten these bolts using washers and nuts on the outside of the brackets, but do not tighten them down fully yet
12. Check that the bumper is aligned evenly left and right—a good way of checking this is by measuring the gap on each side of the bumper from the bumper's edge to the vehicle's fender  
Use the supplied alignment shims to take up any gap between the bumper and the frame once the bumper is centered





13. Place a washer on each of the 3/4" Hex Bolts and insert them thru each 3/4" hole in the side of the tool box below the 1/2" bolts from step 11.. The bolts will extend completely thru the frame horn with about 1" of threads showing. Continue by installing the small angle with the two 3/4" holes so that the angle covers the front and outer side of the frame horn. Place the 3/4" nylock nut on and tighten up both sides evenly to keep bumper centered and to take up remaining slack from bolt.
14. Install the 2 U-Bolts provided by placing around the 3" pipe and extending thru the back plate of the bumper. Place a 3/8" thick washer followed by a nylock nut on each. Snug these down initially and then tighten when bumper is aligned.
15. After centering the bumper, tighten down all of the installation hardware, starting with the driver side lower bolt, then the passenger side lower bolt, then the driver side upper bolts, and finally the passenger side upper bolts—check that the bumper remains centered and level during this process
16. Once the fastening hardware is secure, the installed bumper should resemble the one shown in figure 7 below
17. Install the fairlead cover using the supplied 3/8" hardware
18. The fairlead cover has holes for mounting a license plate—use the supplied 1/4" hardware to bolt on your license plate here
19. Install the toolbox door



**Figure 7: Installed bumper**