

# Installation Guide for 14-23 Toyota 4Runner Headlights

**NOTE:** Some vehicle require the DRL harness installed for the headlight to function properly.

**Do NOT use dielectric or any type of weather sealing grease on connectors or sockets. Doing so will result in connection problems and will not be covered under warranty. Please click [HERE](#) for further explanation.**

## Table of Contents

- INSTALLATION TOOLS
- PART I - Remove Headlights
- PART II - Install Headlights

*Disclaimer: This installation article is a tutorial guide. By reading this article, you agree it is for reference only and AlphaRex USA and its distributors make no guarantee on the finished results. Under no circumstances whatsoever shall AlphaRex USA nor its distributors be liable for any damage, misuse or personal injuries. If you do not fully understand the installation procedure, it is highly recommended that you seek help from professional mechanics to do the installation.*

## INSTALLATION TOOLS



**1/4 Ratchet**



**Metal Panel Popper**



**Phillips Screwdriver**



**Flat Screwdriver**



**1/4 Extension**

**10**

**SIZE NEEDED**

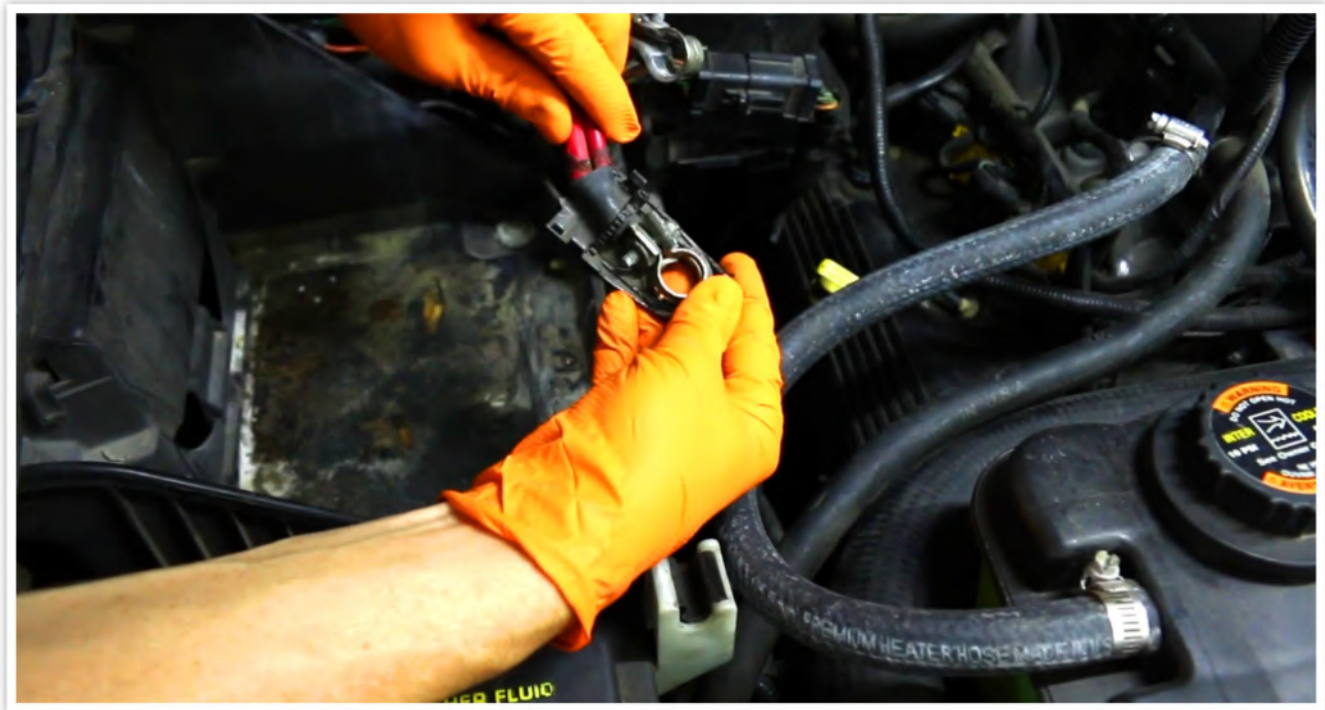


**Socket**

## **PART I - Remove Headlights**

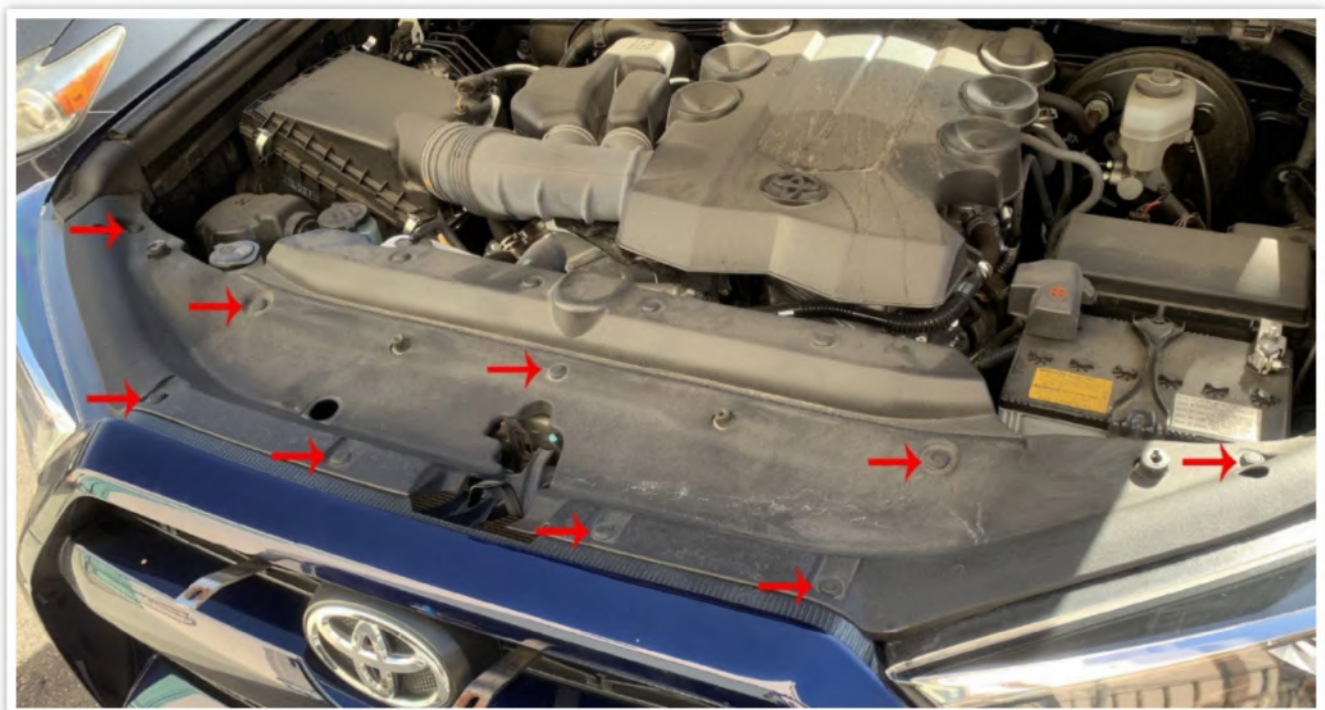
### **STEP 1 DISCONNECTING THE NEGATIVE BATTERY TERMINAL**

Whenever working on your vehicle, always start by disconnecting the negative battery terminal.



## STEP 1 FRONT GRILLE REMOVAL

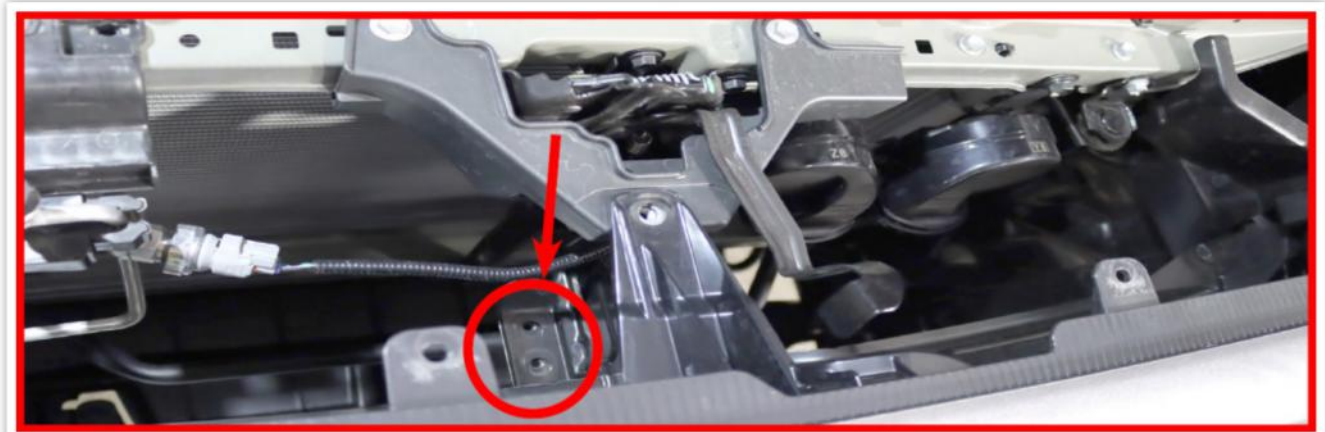
Remove the top plastic cover; the mounting tabs can be removed by pushing the middle of each tab.



Remove the 10mm bolts and the 2 mounting tabs on the upper part of the front grille.



For the 2021+ model, additionally remove the two extra 10mm bolts.

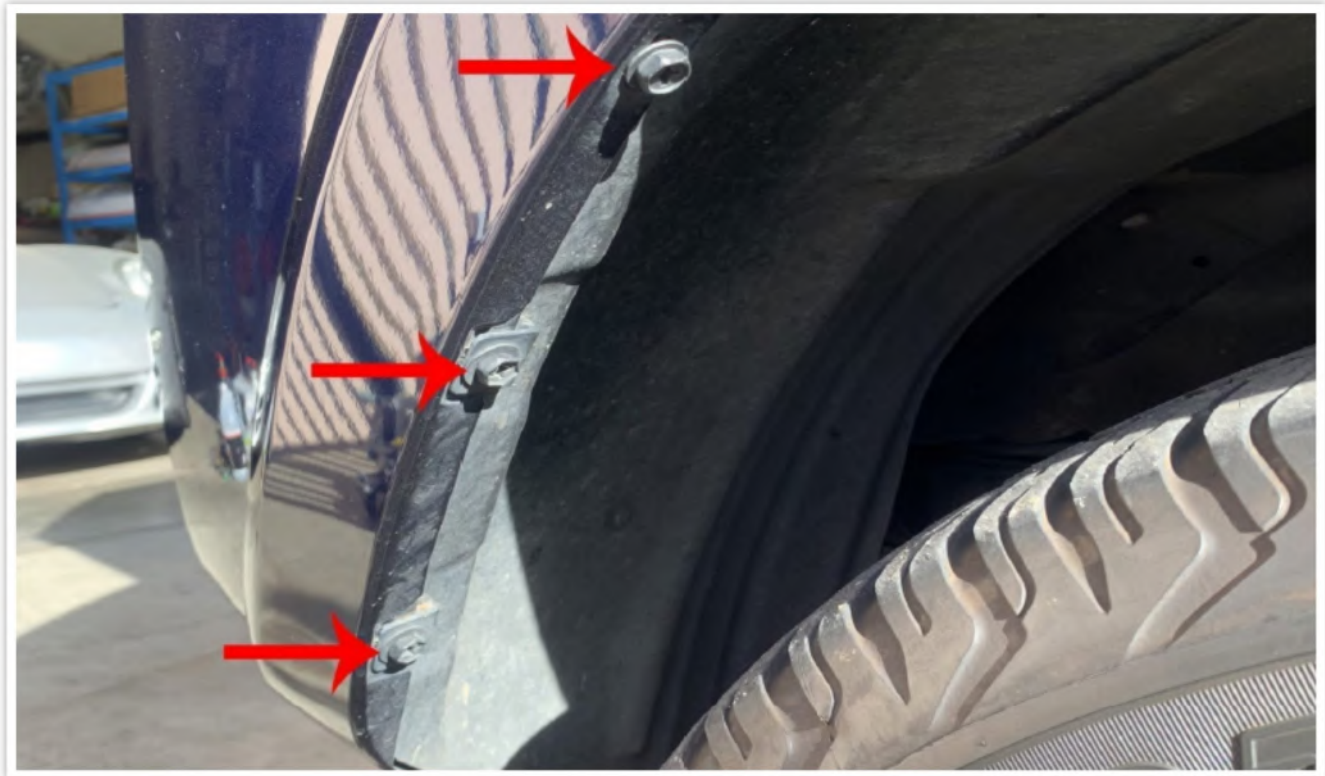


Remove the four mounting tabs on the back of the lower part of the front grille.



**STEP 1**   **REMOVE FRONT BUMPER BOLTS**

Remove the six 10mm bolts, with three on each side near the wheel well.



Remove the six 10mm bolts located along the bottom of the bumper. While removing the bottom bolts, remember to UNPLUG THE FOG LIGHT. Refer to the image for arrows indicating the locations of the three bolts on each side. Proceed to remove the remaining three bolts on the opposite side.

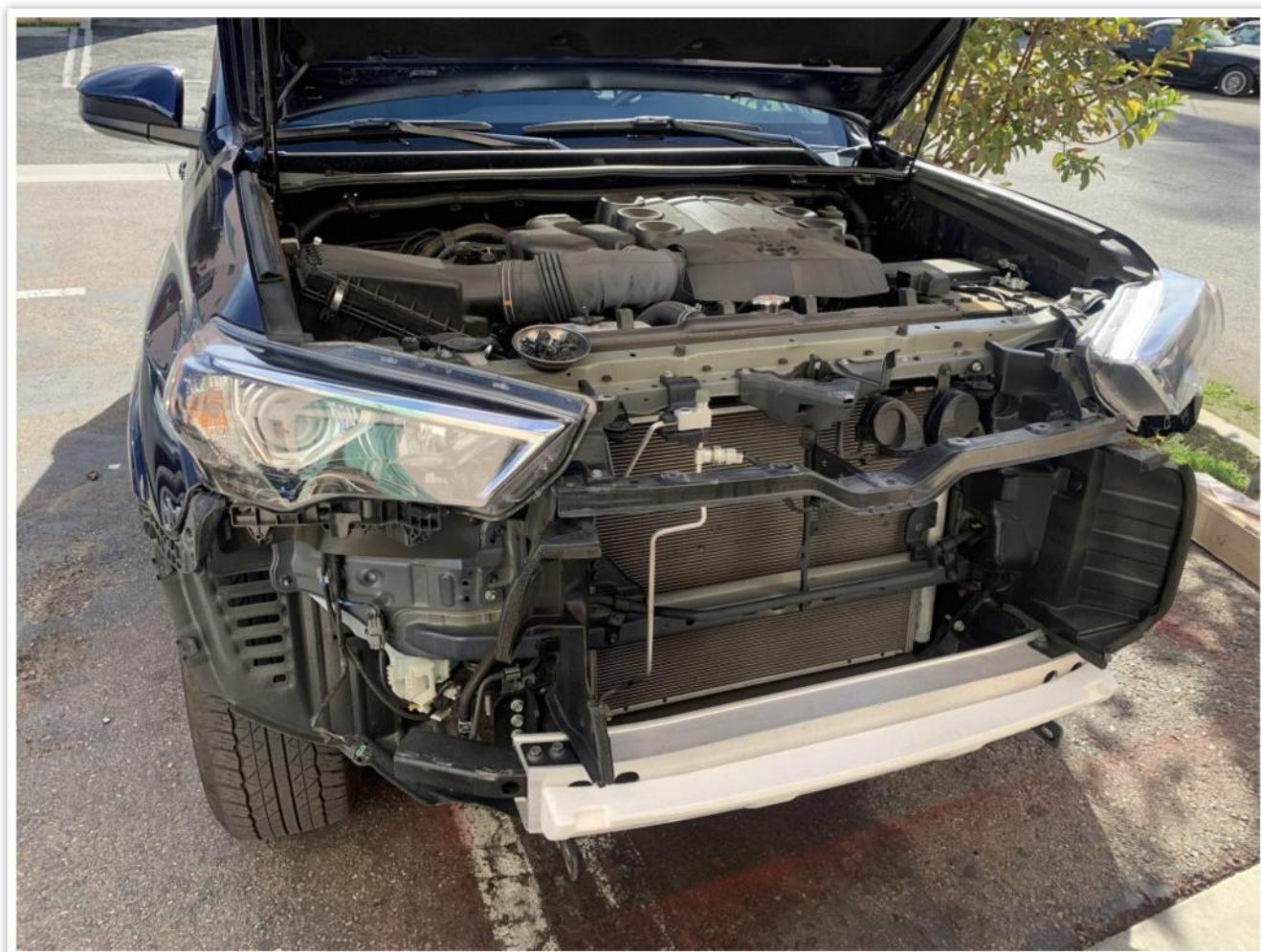


## STEP 1 REMOVING FRONT BUMPER

Pull on the side of the bumper, using a small flat head screwdriver to help release the clips. Follow the same procedure for the other side of the bumper.



Loosen the front bumper cover, unplug the driver side fog light wire, and carefully remove the front bumper completely.



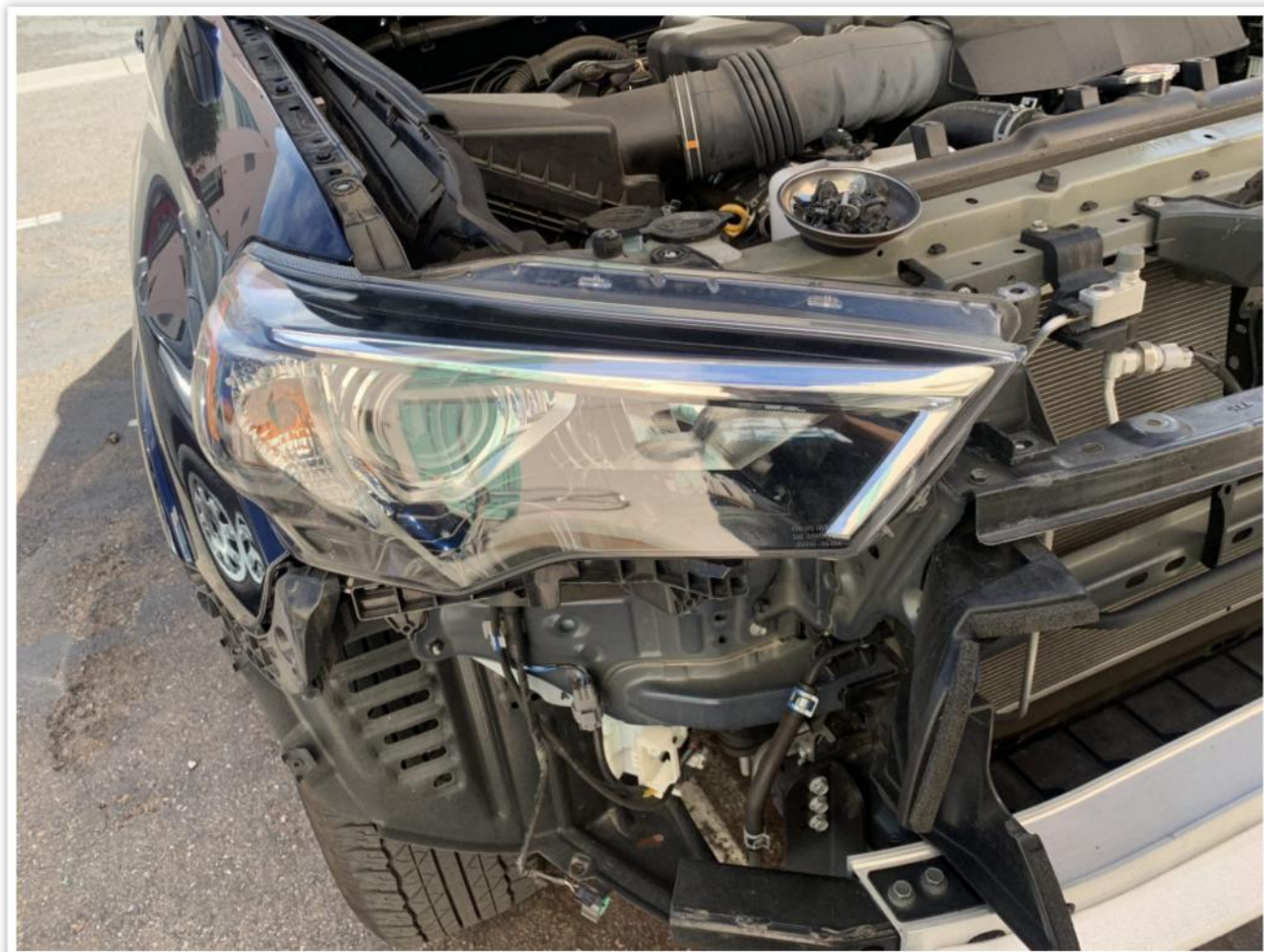
**STEP 1 REMOVE HEADLIGHT BOLTS**

Lift up both side moldings along the fender.



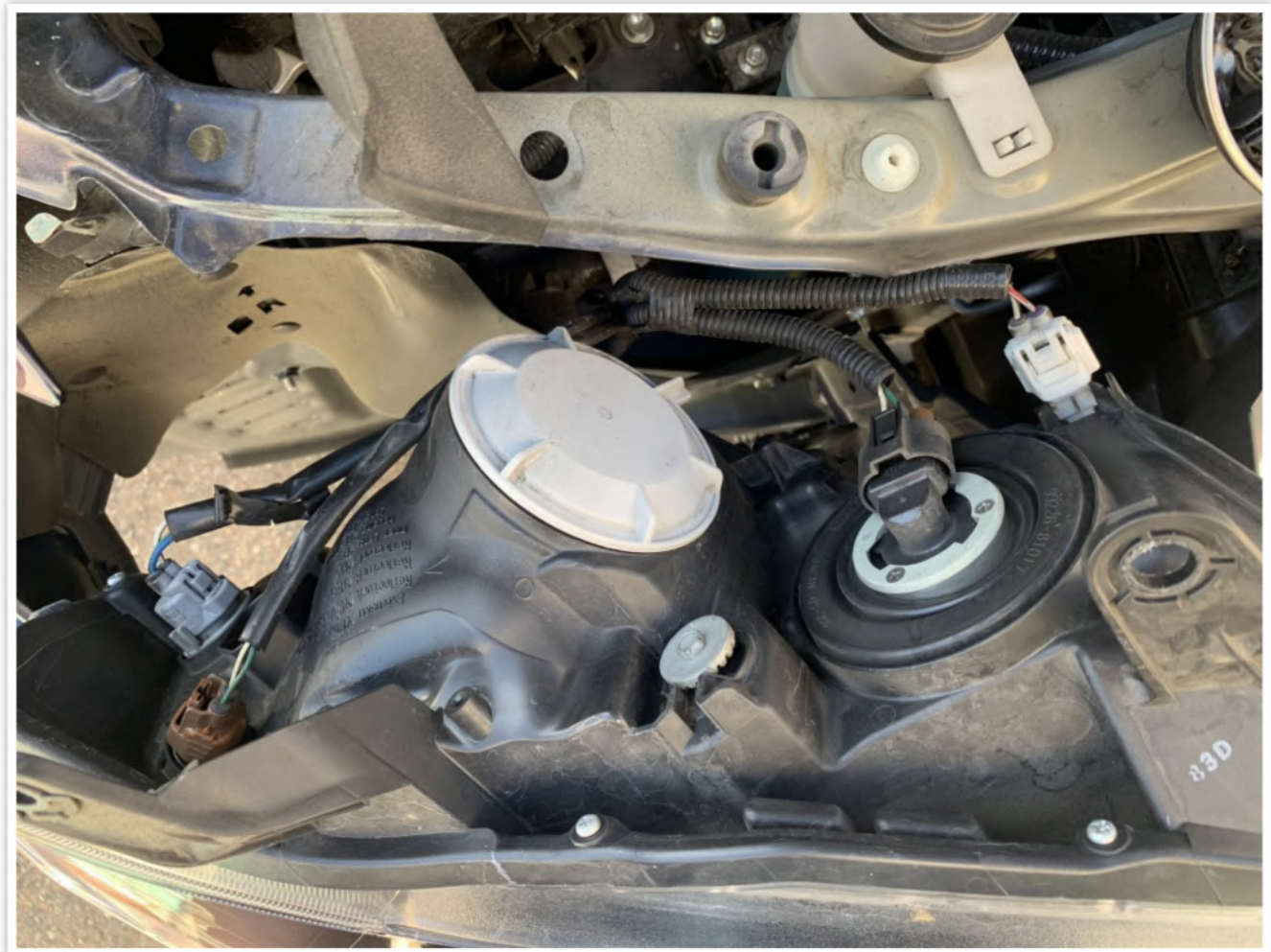


Remove the four bolts that are securing the headlight.



**STEP 1 UNPLUG HEADLIGHT CONNECTORS**

With the headlight removed, unplug the four connectors.



## **PART II - Install Headlights**

### **STEP 1    ROUTE THE DRL HARNESS**

With both headlights disconnected, it's time to install the DRL harness. Connect the red wire to the battery's positive terminal and the black wire to either the battery's negative terminal or the 10mm bolts on the firewall.



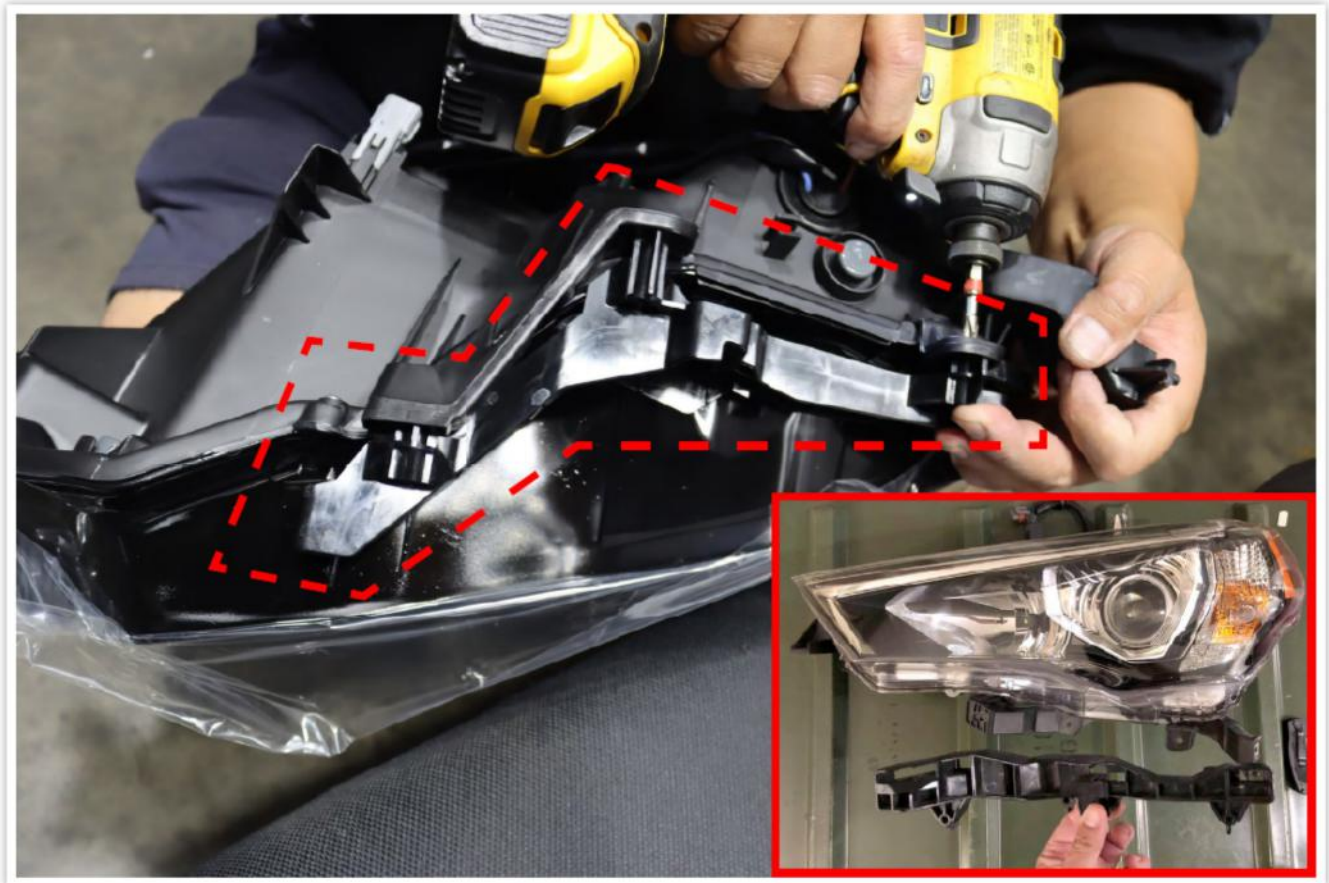
## STEP 1 TAP THE FUSE

To enable the DRL function during the day, tap the grey wire into your INJ fuse (10A) route and connect the two red wires, one to the back of each headlight.



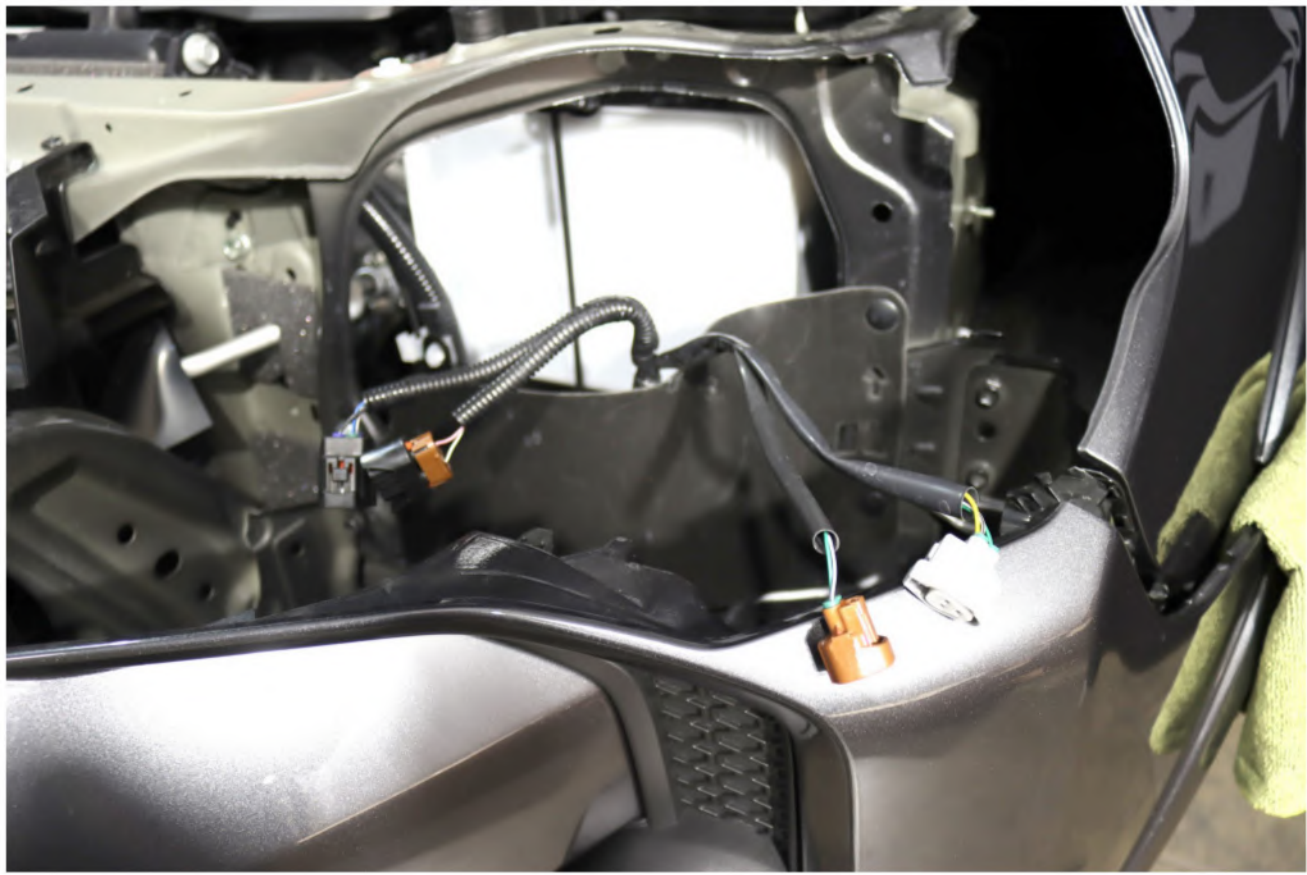
**STEP 1    TRANSFER THE BUMPER BRACKET**

Transfer the bumper bracket from the stock headlights to the new ALPHAREX headlights.



### STEP 1 **PLUG THE SOCKETS AND WIRING**

For 2014-2020 4RUNNER owners, plug the sockets into the new ALPHAREX headlights. **DO NOT USE DIELECTRIC GREASE!**



**For 2021+ 4RUNNER owners, Projector headlights converters are required for installation.**

<https://www.alpharexusa.com/product/21-toyota-4runner-headlights-converters>



For 2021+ 4RUNNER owners, if the vehicle's headlights are equipped with LED projectors for low beam and halogen for high beam.

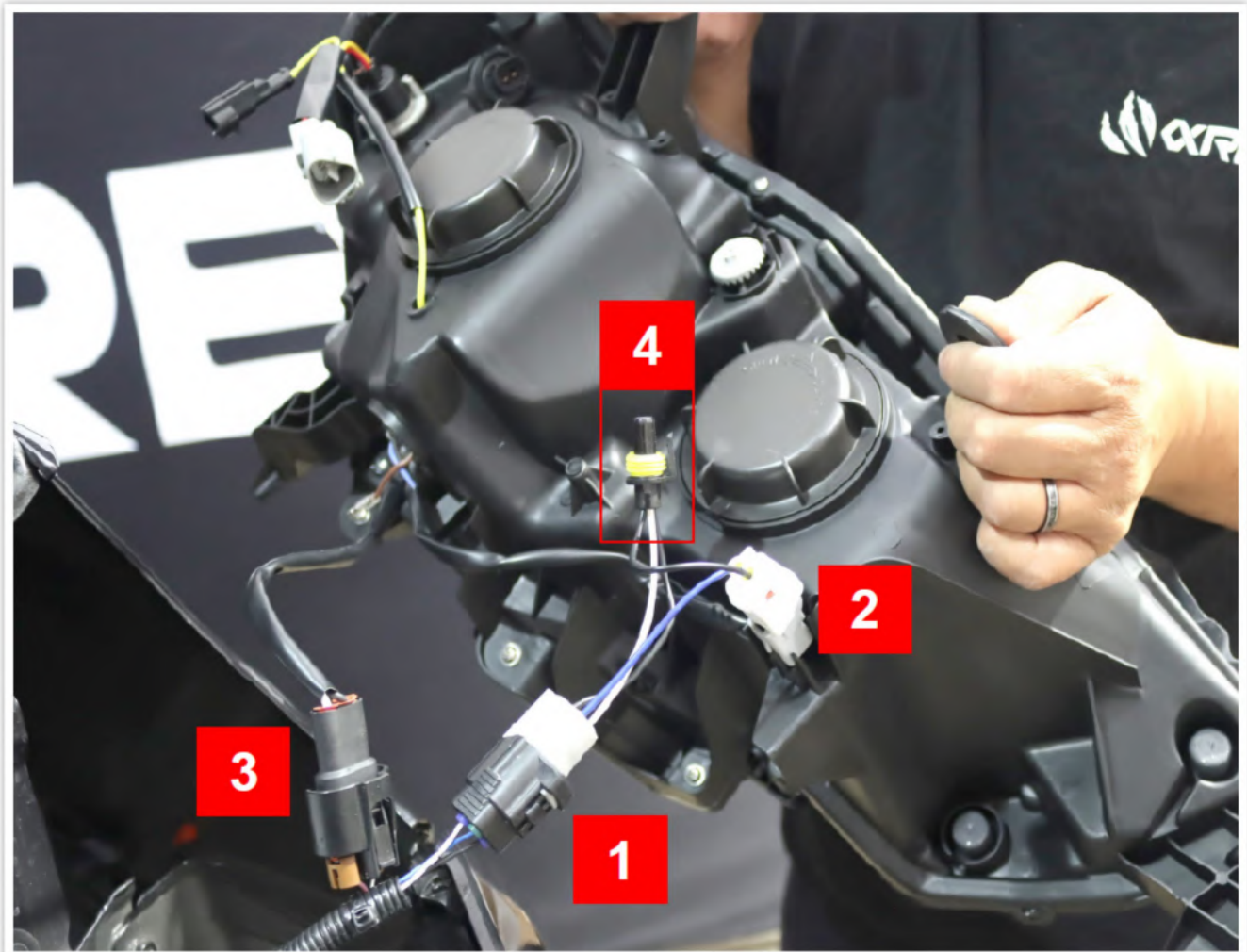


Follow these steps to connect the converter:

1. Plug the converter harness into the vehicle's (low beam) socket.
2. Connect the (low beam) socket to the new ALPHAREX headlight.
3. Attach the ALPHAREX (high beam) connector to the vehicle's (high beam) socket.
4. Keep the converter's (high beam) connector unplugged, as it's already connected to the



vehicle.



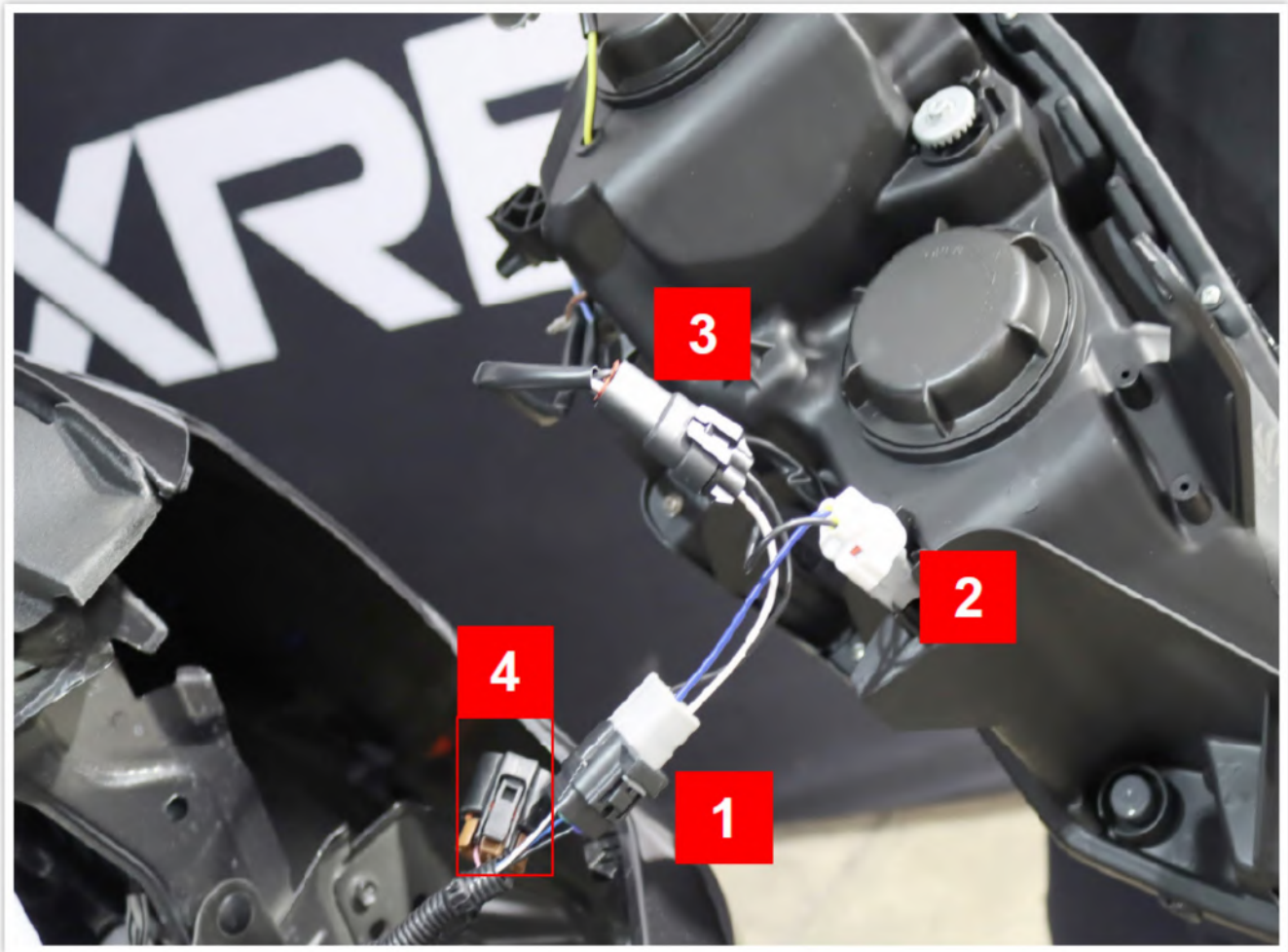
For 2021+ 4RUNNER, if the vehicle's headlights are equipped with dual LED projectors, combining both low beam and high beam functions in a single projector.



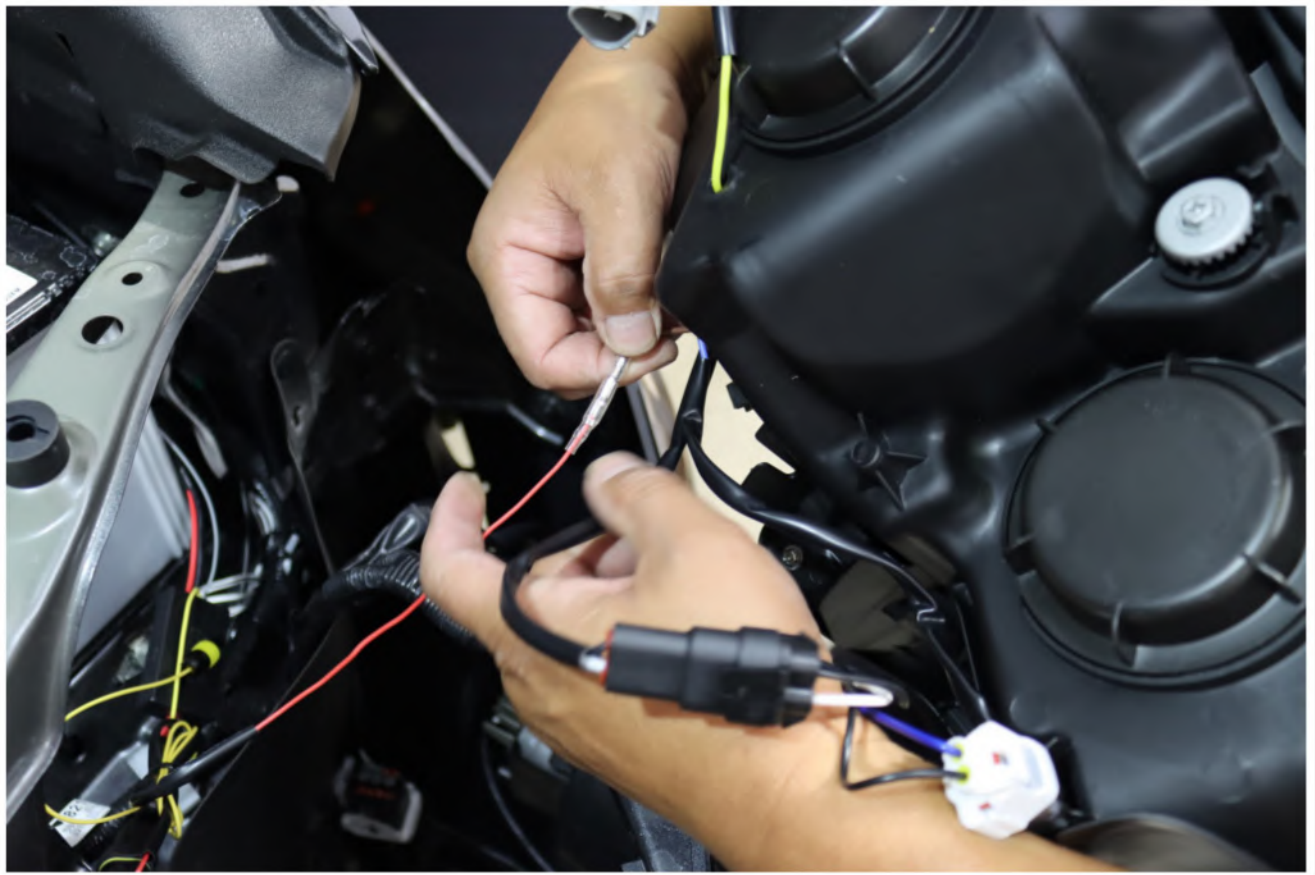
Follow these steps to connect the converter:

1. Plug the converter harness into the vehicle's (low beam) socket.
2. Connect the (low beam) socket to the new ALPHAREX headlight.
3. Attach the ALPHAREX's (high beam) connector to the Converter's (high beam) socket.

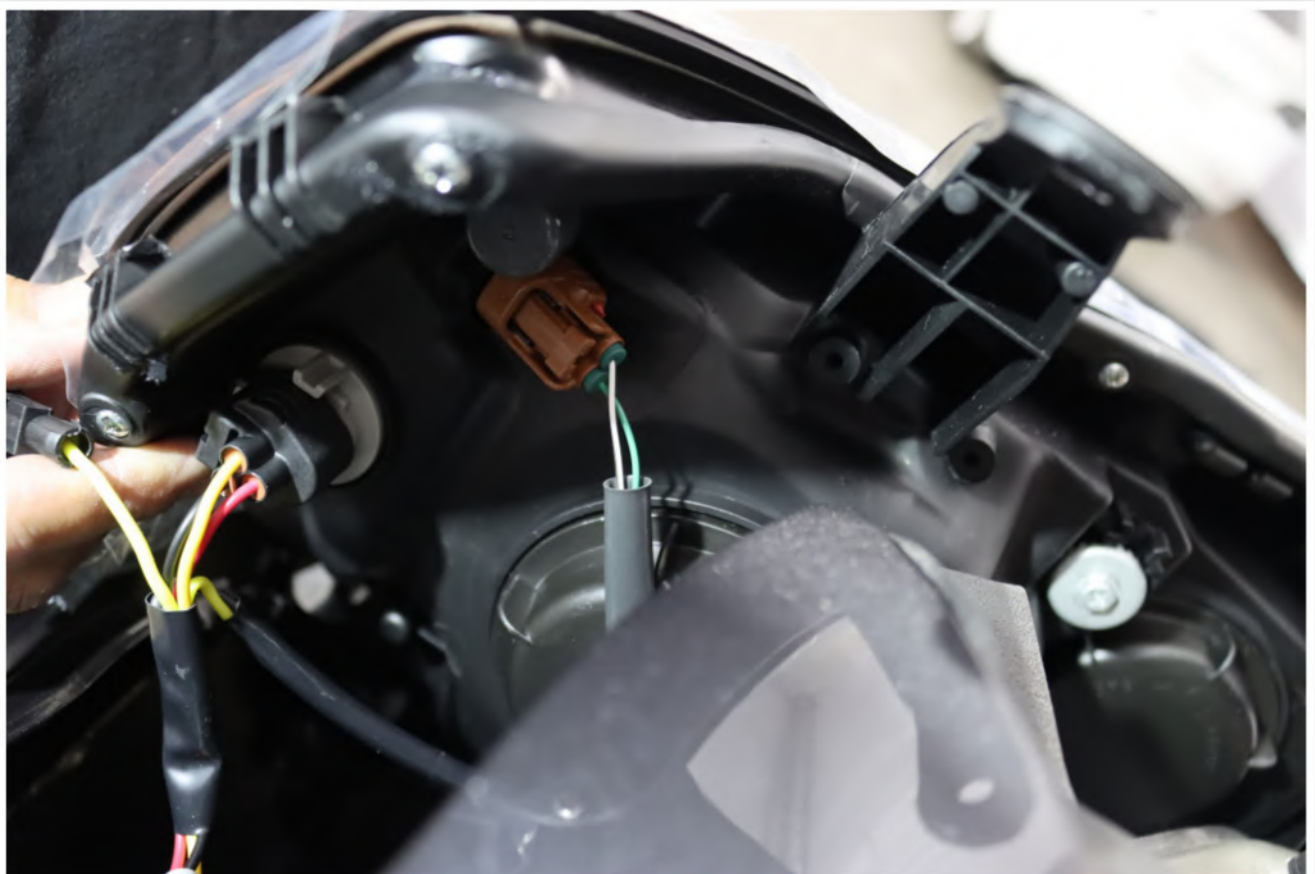
4. Keep the vehicle's (high beam) connector unplugged, as it's already connected to the vehicle.



Next, connect the DRL (red wire) to the headlight.



Finally, connect the turn signal and parking light into the new ALPHAREX headlight. Follow the same steps for the other side of the headlight. **DO NOT USE DIELECTRIC GREASE!**



## STEP 1    **INSTALL THE HEADLIGHTS**

Tighten all the bolts and follow the reverse installation process to complete the headlights installation.







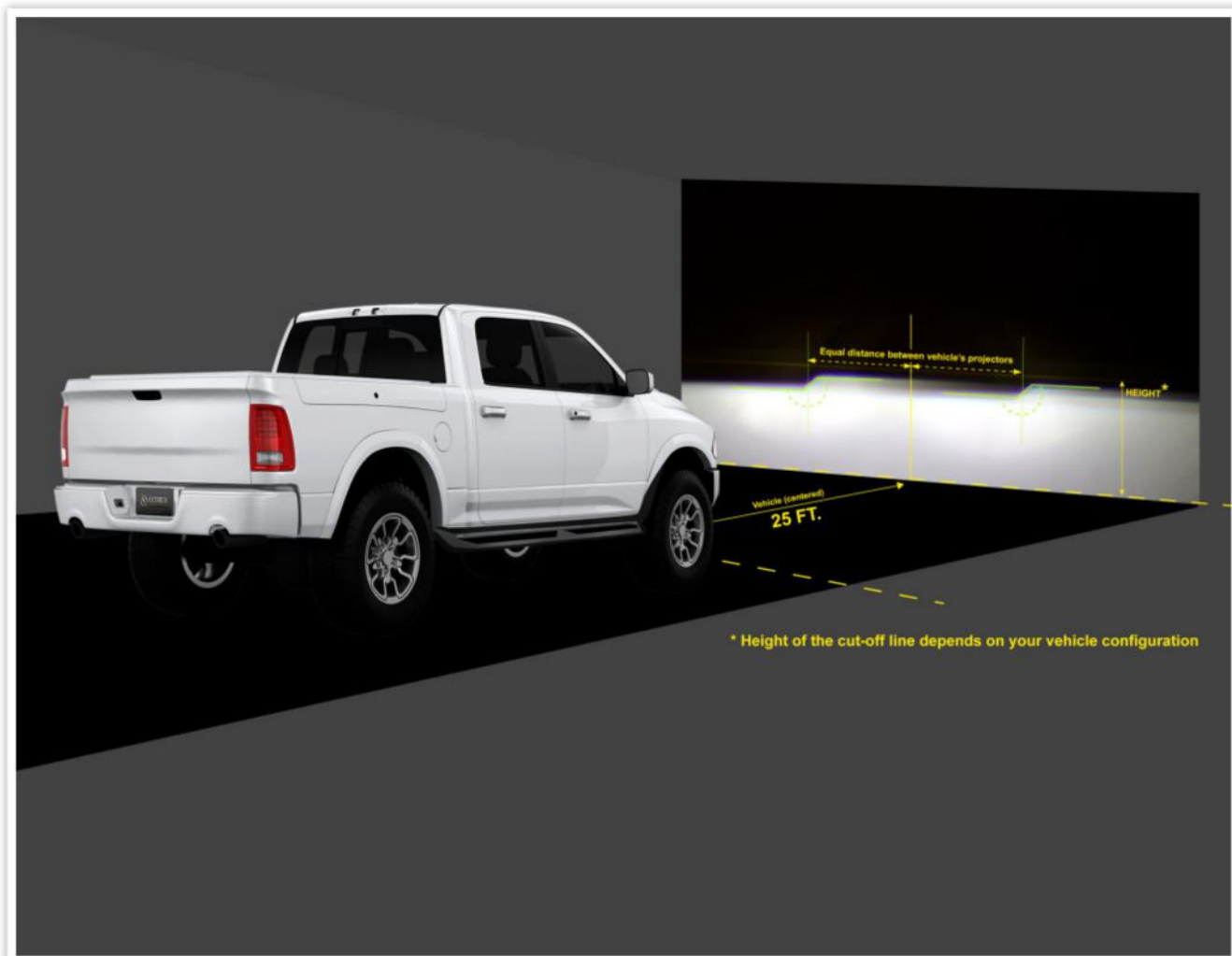
## STEP 1 **ADJUST HEADLIGHT LEVEL**

Once everything has been tested, aim your ALPHAREX headlights by parking 25ft from a wall and level the headlight evenly.

Clockwise to lower the level  
Counterclockwise to raise the level

Follow the same procedure for the other headlight.





## STEP 1 COMPLETE INSTALLATION

Congratulations! You have completed the installation for ALPHAREX 14-23 Toyota 4Runner HEADLIGHTS.





