

# How to Switch to Amber Daytime Running Light (DRL) for AlphaRex 15-23 Ford Mustang Headlights

## Table of Contents

- AMBER SWITCH PLUG LOCATION
- CONNECT THE AMBER SWITCH PLUG
- COMPLETE THE SWITCH TO AMBER DRL & PARKING LIGHTS

*Disclaimer: This installation article is a tutorial guide. By reading this article, you agree it is for reference only and AlphaRex USA and its distributors make no guarantee on the finished results. Under no circumstances whatsoever shall AlphaRex USA nor its distributors be liable for any damage, misuse or personal injuries. If you do not fully understand the installation procedure, it is highly recommended that you seek help from professional mechanics to do the installation.*

This instruction guide is applicable to the following ALPHAREX headlight products:

- 15-17 Ford Mustang/18-20 Mustang Shelby GT350/GT500 NOVA-Series LED Projector Headlights (Black) / SKU: 880144
- 15-17 Ford Mustang/18-20 Mustang Shelby GT350/GT500 NOVA-Series LED Projector Headlights (Alpha-Black) / SKU: 880114
- 15-17 Ford Mustang/18-20 Mustang Shelby GT350/GT500 MK II NOVA-Series LED Projector Headlights (Black) / SKU: 880262
- 15-17 Ford Mustang/18-20 Mustang Shelby GT350/GT500 MK II NOVA-Series LED Projector Headlights (Alpha-Black) / SKU: 880261
- 18-23 Ford Mustang NOVA-Series LED Projector Headlights (Black) / SKU: 880258
- 18-23 Ford Mustang NOVA-Series LED Projector Headlights (Alpha-Black) / SKU: 880257
- 18-23 Ford Mustang MK II NOVA-Series LED Projector Headlights (Black) / SKU: 880264
- 18-23 Ford Mustang MK II NOVA-Series LED Projector Headlights (Alpha-Black) / SKU: 880263

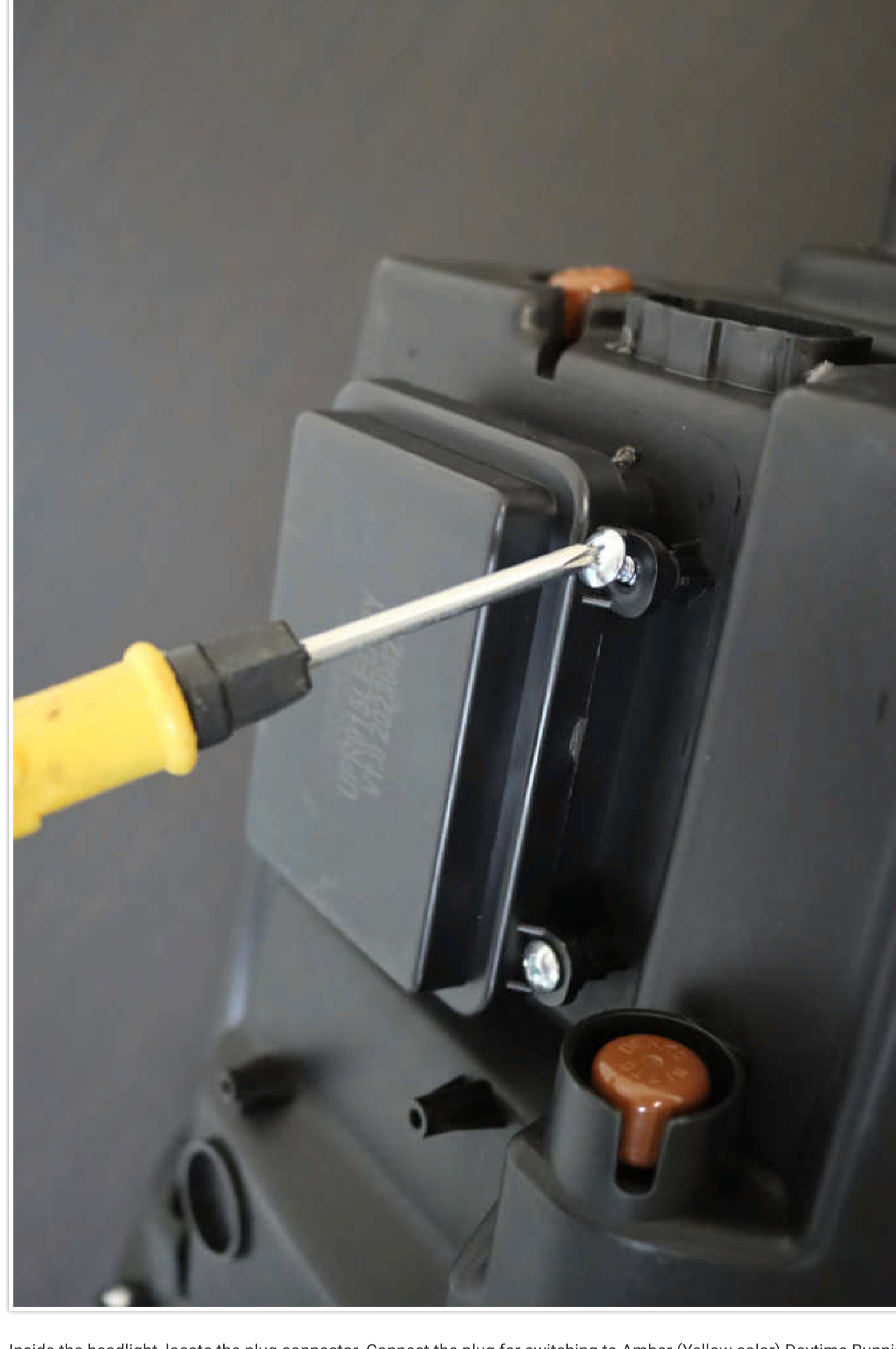
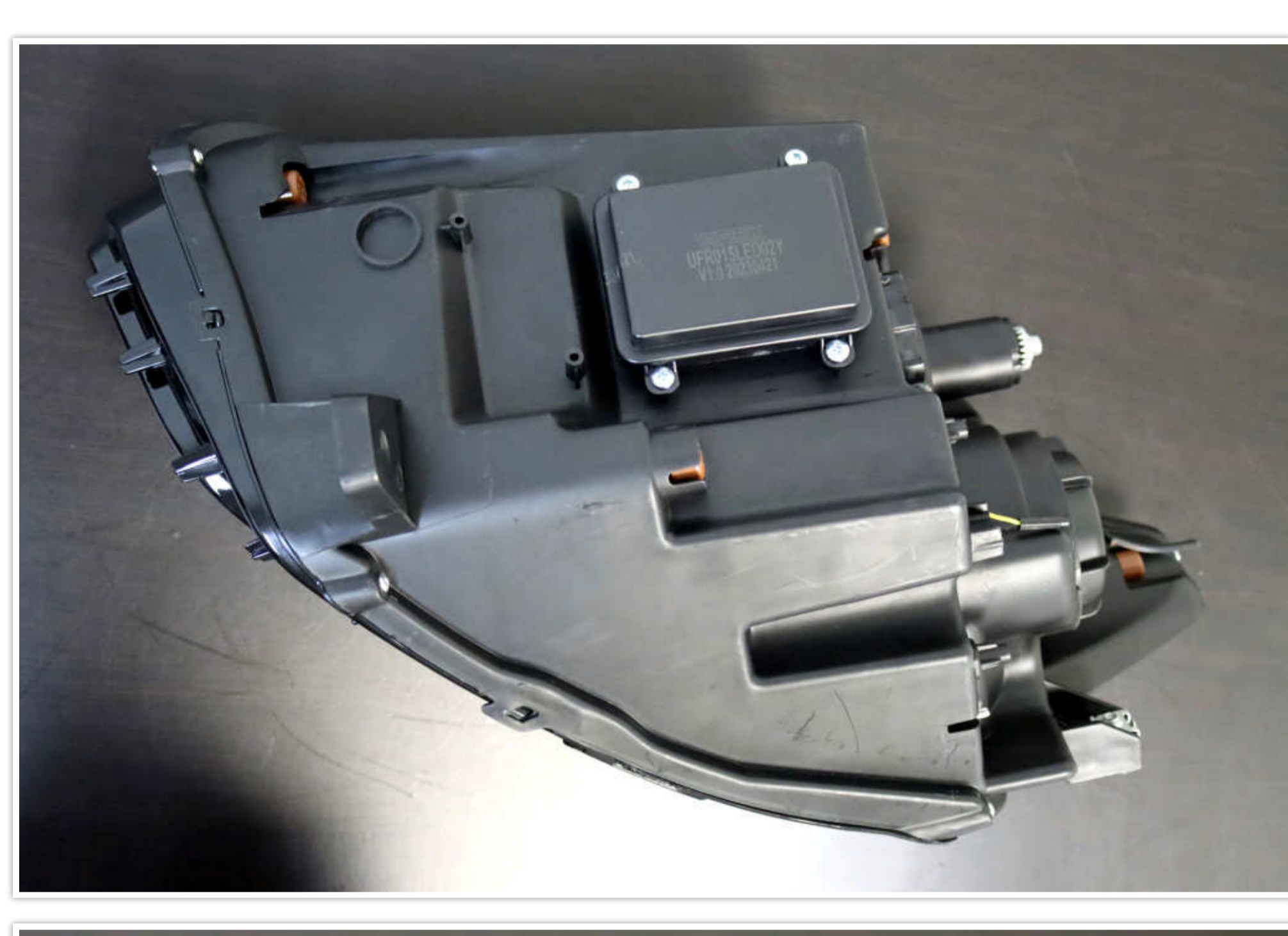
In the product list, the NOVA-Series headlights designed for the 2015-23 Ford Mustang offer an optional switch plug, allowing you to customize the color of the Daytime Running Lights (DRL) and Parking lights to Amber (Yellow). By default, these lights come in White from the factory.

Customers have the flexibility to choose Amber (Yellow color) based on their preference. PLEASE NOTE: Once you have plugged in and switched to Amber, the color of the Daytime Running Lights (DRL) and Parking lights will remain in Amber (Yellow color).

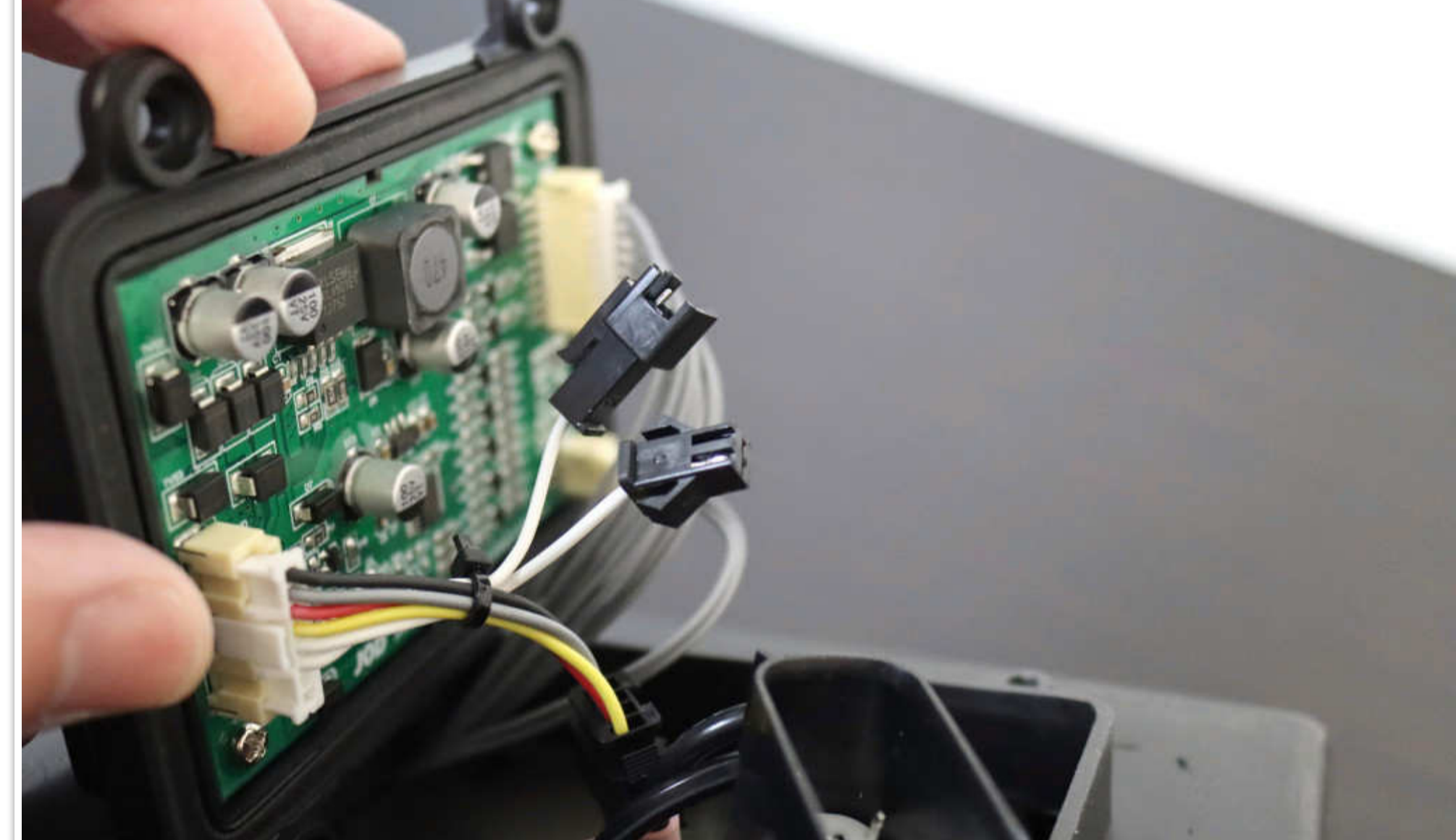


## AMBER SWITCH PLUG LOCATION

At the rear of each ALPHAREX headlight, locate a rectangular cover secured by four screws at the bottom. Unscrew and open the cover.

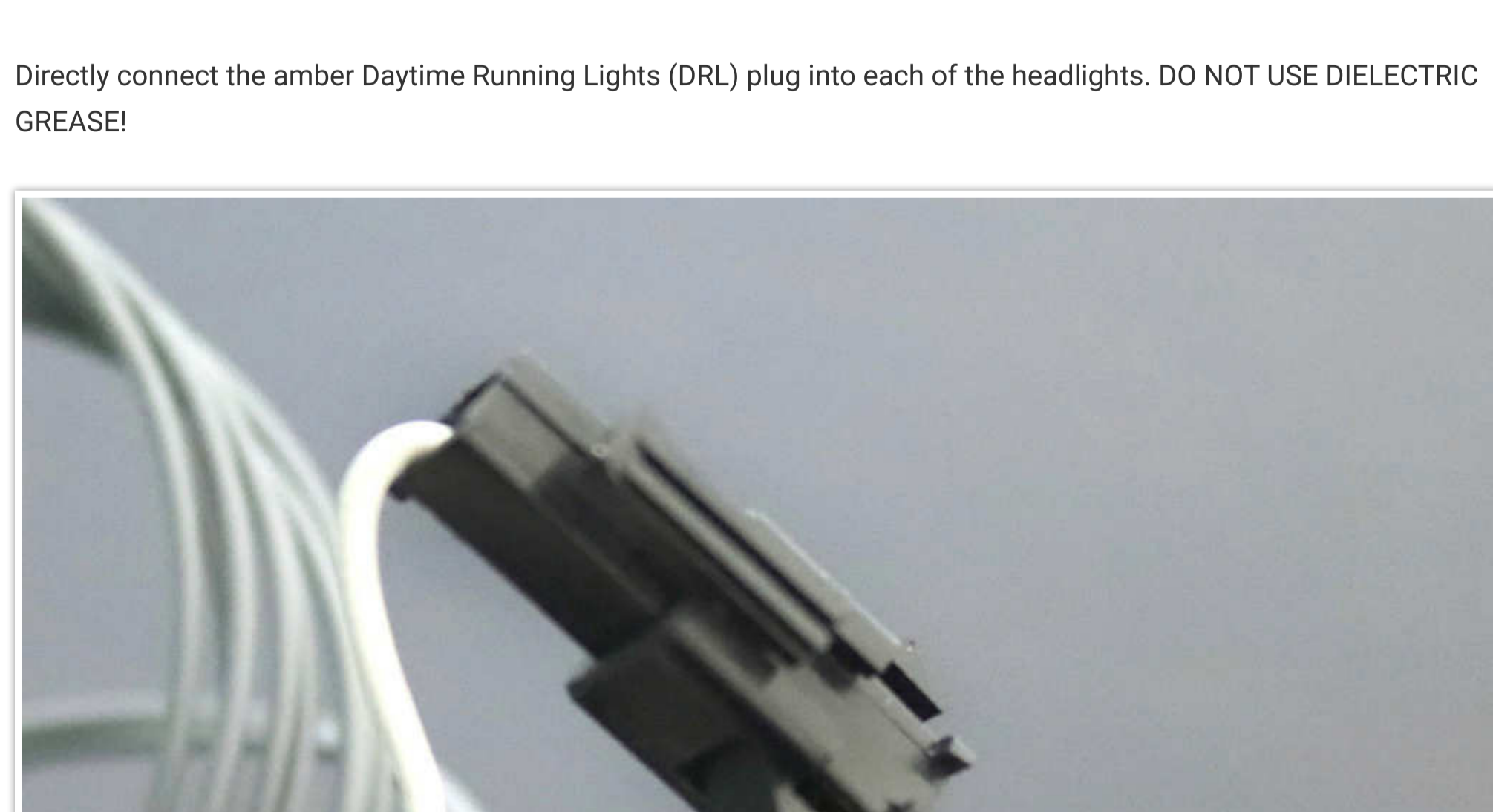


Inside the headlight, locate the plug connector. Connect the plug for switching to Amber (Yellow color) Daytime Running Lights (DRL) and Parking lights.



## CONNECT THE AMBER SWITCH PLUG

Directly connect the amber Daytime Running Lights (DRL) plug into each of the headlights. DO NOT USE DIELECTRIC GREASE!



## COMPLETE THE SWITCH TO AMBER DRL & PARKING LIGHTS

After plugging in the connection, reinstall the headlights onto the vehicle. Congratulations! You have successfully switched to Amber (Yellow color) Daytime Running Lights (DRL) and Parking lights.

