



Part No. ALL72100-72108

Ford 9" Axle Housing Seals

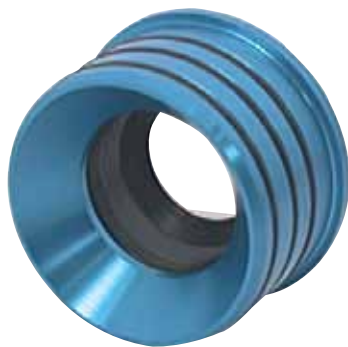
Internal seals prevent gear lube from leaking into axle tube to eliminate premature rear end failure. Seal housings are O-ring type with springloaded seals. For use with 3" O.D. axle tubes and most 31-spline axles. Measure I.D. of tube for proper fit.

Part No.	Description
ALL72100*	2.625" O.D. Fits 3/16" Wall, 3" Tube, Red
ALL72102	2.562" O.D. Fits 7/32" Wall, 3" Tube, Blue
ALL72104	2.500" O.D. Fits 1/4" Wall, 3" Tube, Gold

*Use with Allstar steel and aluminum axle tubes.



ALL72100



ALL72102



ALL72104

Replacement Components:

ALL72101.....O-Rings For ALL72100, 3-Pack
ALL72103.....O-Rings For ALL72102, 3-Pack
ALL72105.....O-Rings For ALL72104, 3-Pack
ALL72108.....Inner Seal



ALL72108

Check out an excellent selection of performance driveline & axles on our website.