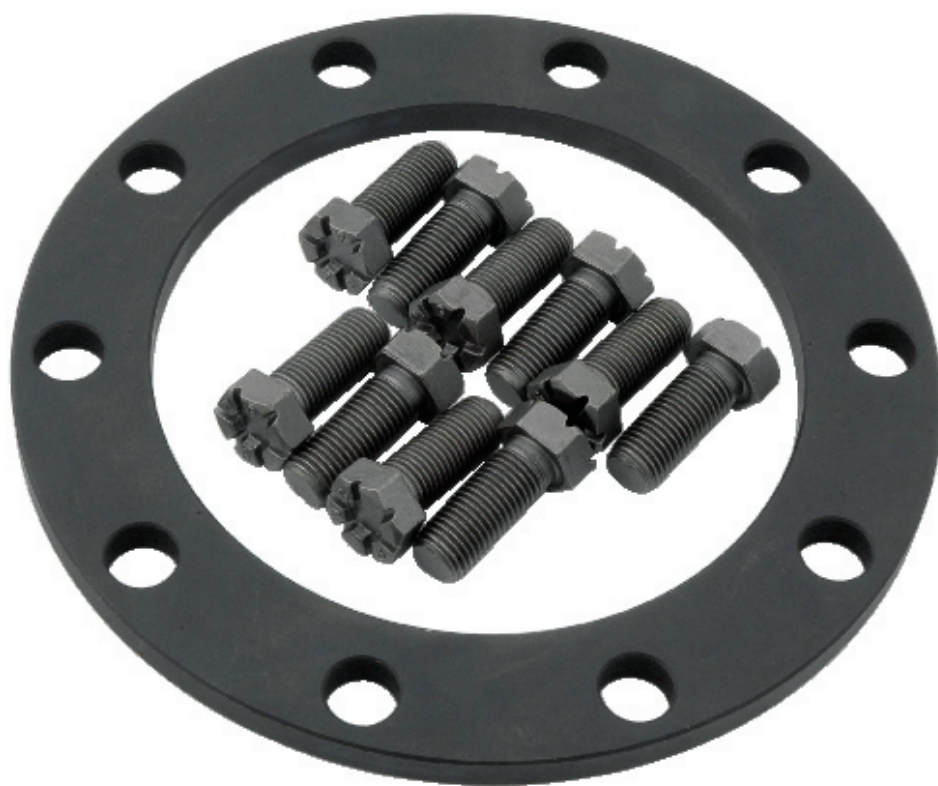




Part No. ALL70100

GM 7.5" Ring Gear Spacer

Spacer allows installation of 3.23 and numerically higher ratio gear sets with standard thickness ring gears into 3.08 and numerically lower carriers. Steel spacer is .3125" thick and includes ten 7/16"-20 x 1-1/4" UHL LH bolts.



Check out an excellent selection of performance driveline & axles on our website.