

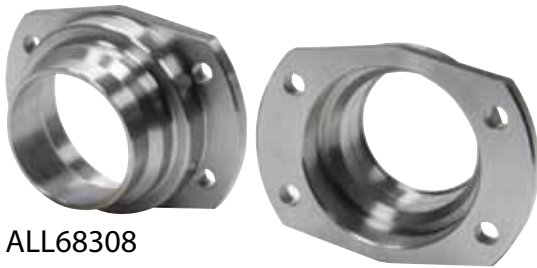


Part No. ALL68308-68309

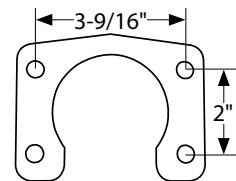
Ford 9" Housing Ends

Housing ends are welded into 3/16" wall x 3" O.D. axle tubes when building a custom width housing or converting to larger axles. Ends feature a stepped design with a beveled welding flange to help position flange in tube for easier installation.

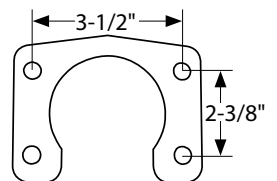
Part No.	Description
ALL68308.....	Large Bearing, Late/Torino Style
ALL68309.....	Large Bearing, Early Model



ALL72316
Large Bearing Late/Torino Style
With 3/8" Hardware



ALL72317
Large Bearing Early Style
With 1/2" Hardware



Related Items

- ALL72316.....Axle Retainer, Large Bearing, Late/Torino Style
- ALL72317.....Axle Retainer, Large Bearing, Early Style



ALL72316
ALL72317

REV100615